



GROUP	MODEL
General	2022MY EV6 (CV)
NUMBER	DATE
PS727	April 2022



TECHNICAL OPERATIONS

SUBJECT:

FOAM-LINED TIRE REPAIR INSTRUCTIONS

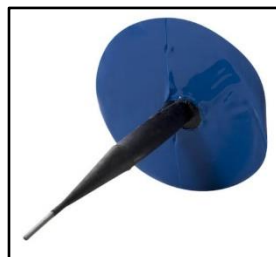
This bulletin provides information for repairing punctures on foam-lined tires equipped on 2022MY~ EV6 (CV) vehicles. These tires are manufactured with a layer of polyurethane foam on the inner surface of the tire tread which absorbs road noise and creates a quieter driving experience. These tires can be repaired but require additional steps compared to a conventional tire repair. Follow the procedure outlined in this publication to safely repair foam-lined tires.

WARNING

Replace the tire if any one of the following conditions is present. DO NOT repair the tire if:

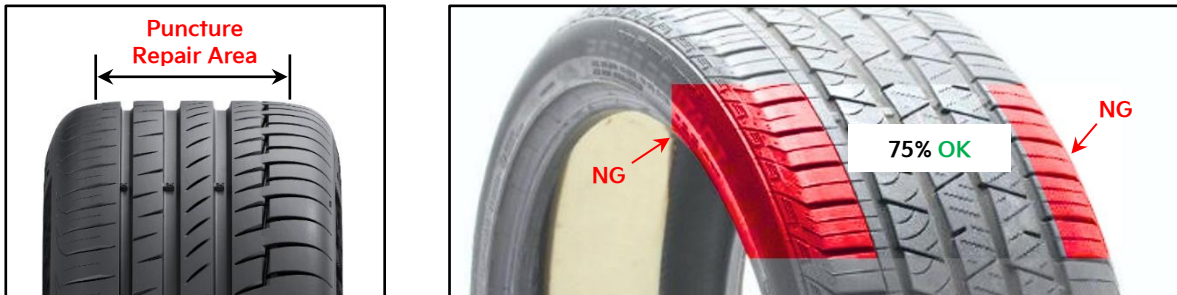
- Tread depth is less than the 1.6mm legal limit.
- Size of puncture is equal to or greater than 6mm in diameter.
- Puncture is located outside tread repairable area or on the sidewall.
- Structural integrity of the tire has been compromised and/or has run flat damage.

RECOMMENDED PLUG PATCH: REMA TIP TOP Minicombi A6 pack (shown), or equivalent.



Repair Instructions:

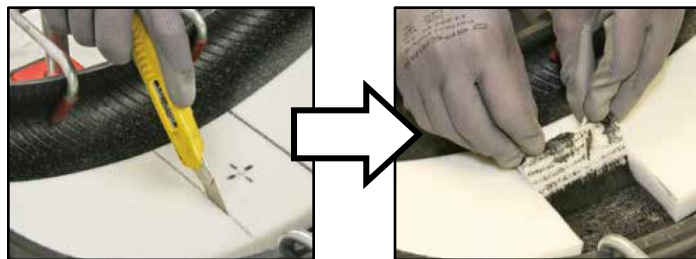
1. Confirm that the puncture is located within the repairable area (**OK**) shown below.



2. Analyze the size of the puncture (<6mm) and mark the location of the puncture.

3. Dismount the tire from the wheel.

4. Carefully cut out repair section of the foam lining to allow full plug patch installation.

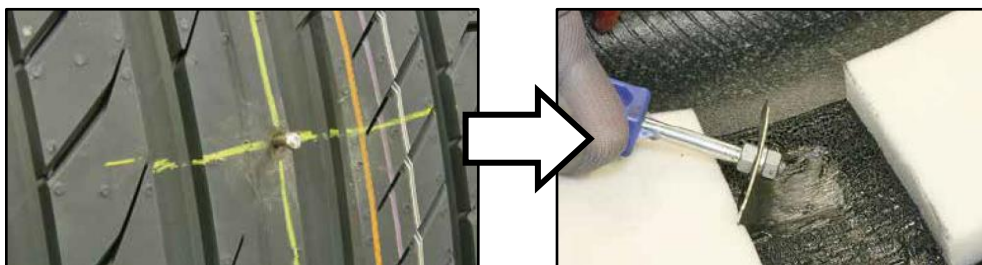


Note: Recommended tire plug patch from REMA TIP TOP Minicombi pack (shown), or equivalent.

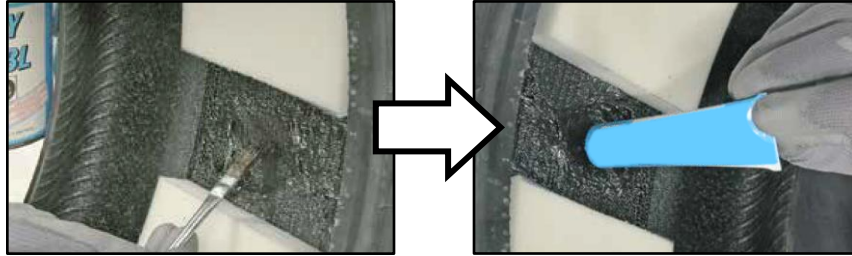
CAUTION

Be careful NOT to cut into the inside of the tire tread or replacement will be required.

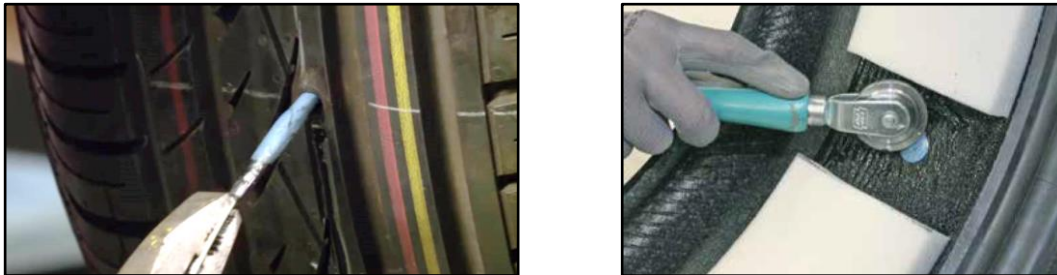
5. Remove any debris (ex. nail, or other object) that caused the puncture and grind the inside of the tire in preparation of the plug patch installation.



6. Apply cement glue to the tire puncture area and plug patch.



7. Install the plug patch until firmly flat inside the tire and roll out patch surface to promote adhesion.



8. Cut off any excess plug on the outside of tire so that it is even to tread surface.



9. Apply tire cement glue over the patch surface area where foam patch was cut out and removed.



10. Re-install the removed foam lining pad and allow to dry for at least 10 minutes.

11. Re-mount the tire to the wheel, inflate and perform RFV measurement and balance before installing back to the vehicle.