



Preliminary Information

PIT5847C SES Light - Reduced Power - DIC Warning Messages - Reduced Steering Message - Stabilitrack Message

Models

Brand:	Model:	Model Years:	VIN:		Engine:	Transmissions:
			from	to		
Cadillac	XT5	2019 - 2022	All	All	All	All
Cadillac	XT6	2020 - 2022	All	All	All	All
Chevrolet	Blazer	2019 - 2022	All	All	All	All
GMC	Acadia	2019 - 2022	All	All	All	All

Involved Region or Country	North America
Condition	<p>A customer may complain of a SES light on, reduced power, various warning messages including service brake, service steering, stabilitrack or other warning messages.</p> <p>DTC codes P0232, P023F, P035C, P035E, P0641, P0697, P07BE, P1000, P1009, P2535, P129D, P12A6, P12A8, P2635, P3051, P3052, P3055, P3056, P305B, U0074, U0077, U0121, U0131, U0151, U0415, U0420, U18A2, U18C6, U18D2, U2502, U2616 or others may be found depending on which circuits are damaged.</p> <p>This concern may be intermittent.</p>
Cause	<p>Wiring harness rubbing on the battery tray support bracket which secures the TCM or on one of the studs that secures the top of the control valve body cover.</p> <p>The harness may chafe through causing damage to various circuits.</p> <p>Codes and symptoms will vary depending on which circuit or circuits are damaged.</p>

Correction:

Inspect the harness below the battery tray for rubbing on the bracket below the tray which secures the TCM.

If damage is found repair any damaged circuits and tape up the harness.

There have been cases reported where there was no physical damage seen on the outer harness, but when the harness was opened there were damaged circuits inside.

If it is found that the harness is contacting the bracket or the valve body stud, cut the harness open in that area and carefully inspect the wires for damage.

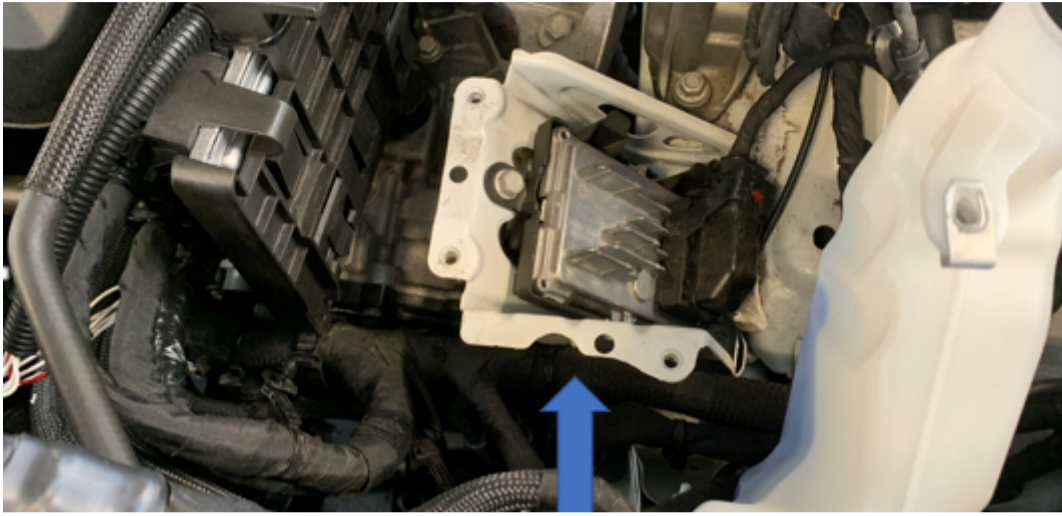
If damage is found repair any damaged circuits and tape up the harness.

It will be necessary to remove the battery and battery tray to perform the repairs.

Inspect for any retainers that are missing.

Reroute or properly secure the harness to prevent further damage.

It may also be necessary to install a piece of heater hose, conduit or both over the harness to prevent a reoccurrence of the concern.



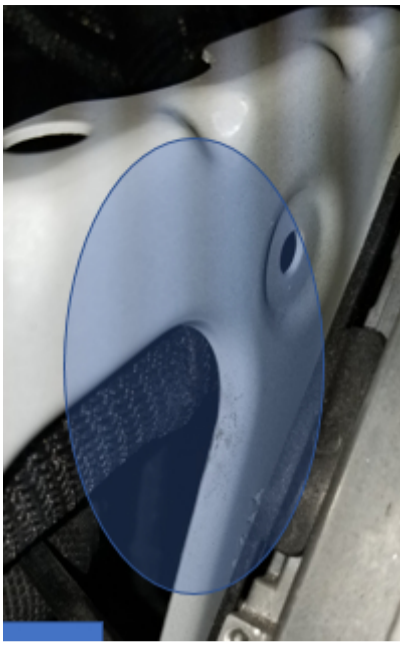
Battery and battery tray are removed to show the area of concern.



Close up of area where harness may chafe.



Harness may chafe in the areas shown in the photos above and below.



Above shows a harness that was chaffed by the bracket.

If no damage is found in that area follow the harness over to the area at the top of the control valve body cover.

Inspect for damage to the harness caused by one of the studs securing the cover.

If damage is found, repair the harness and secure it as necessary.

Version History

Version	3
Modified	<p>07/13/2021 - Created on.</p> <p>08/16/2021- Added Acadia, XT5 and XT6 and additional codes.</p> <p>09/15/2021- Added note to inspect harness above control valve body cover.</p> <p>03/29/2022- Added note to open harness if chaffing is seen and added MY 2022 per Bill Taylor, BQM</p>



GENERAL MOTORS