

# PARTS CIRCULAR

Attention: Parts Manager  
Inventory

April 15, 2022

## Special Notice SM 05-2022 VWMEX:

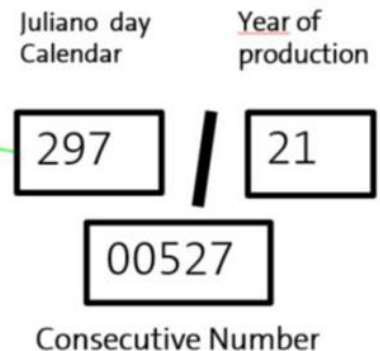
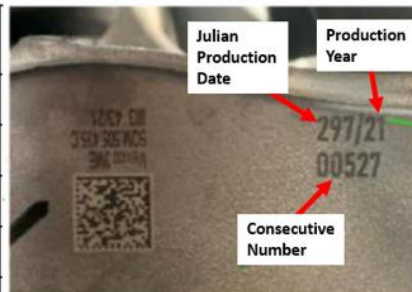
- 5QM-505-435-C (Housing)
- 5QM-505-436-C
- 5QN-505-435-A
- 5QN-505-436-A

In order to promptly receive your credit and to improve the level of parts that reach your customers: Please return your inventory of the above-listed material numbers to your facing PDC, **no later than 4/27/2022**.

**Only parts produced in 2021 are affected and require further inspection. Parts with the “Julian production date” and “consecutive number” that are identified in the production lot chart below, must be returned. All other production dates are ok to use.**

### Affected production lots:

Julian production day	Consecutive number
141	291 to 336
144	66 to 134
188	300 to 321
216	302 to 329
231	196 to 237



Your cooperation in using the following claims procedures is appreciated:

1. File a separate “Claim with Return” selecting “Dir Sup. Req. Return” under item type, completing your dealer comments with the Special Notice Number and Parts Circular number referenced above
2. Review Parts On Command the following day for the Delivery List document; contact your facing PDC with any problems or delays
3. Enter your 4000XXXXX delivery document number on a YELLOW DEPOT REQUEST RETURN label
4. Adhere the YELLOW DEPOT REQUEST RETURN label to the package(s) containing the returned parts
5. Include one copy of the Delivery Document with the returned part(s).

Items returned after the above-mentioned date WILL NOT be accepted on any type of return/buyback.

Please re-order required new materials using the **same part number**.