



94-22-02 - Parking Assist Sensors Providing False Warnings

Release date: 4/12/2022

Condition

Applicable Vehicles					
Model(s)	Year	Eng. Code	Trans. Code	VIN Range From	VIN Range To
All	2018-2022	All	All	All	All

Revision Table			
Instance Number	Published Date	Version Number	Reason For Update
2066761/1	4/12/22	94-22-02	Original publication.

Customer states one of the following:

- The parking assistance sensors cannot be seen any more in the bumper or are loose.
- The surface of the parking assistance sensors is damaged.
- Various complaints about the parking assistance/parking assist steering.
- Various messages in the instrument cluster about the failure on the parking assistance.

Technical Background

External influence such as stone chipping or accident/collision.

Incorrect sensor installation/fitment.

Sensor harness correct length and connector not seated properly.

Production Solution

Not applicable.

Service

Various environmental conditions can cause false activations to be seen by the customer. In cases where the customer is reporting several false activations (parking aid warning is displayed however nothing is around) the below environmental and vehicle contributors should be checked.

**94-22-02 - Parking Assist Sensors Providing False Warnings**

Release date: 4/12/2022

Environmental Conditions

1. Plants growing to certain heights, and curbs can lead to incorrect warnings being issued in the vicinity of the vehicle.
2. Gravel Tracks, cobblestones, potholes, sharp bends in the road, and slopes can lead to incorrect warnings being displayed.
3. Various types of weather/ambient conditions can lead to functional issues/limits of system operation:
 - Water on the parking aid senders.
 - Ice/snow on the parking aid senders or in transition to the bumper.
 - Noise disturbance (pneumatic brakes of heavy goods vehicles, anti-rodent devices, or other active ultrasound sources in the vicinity, such as parking aid systems in other vehicles).
4. Immediate surroundings
 - Fluorescent tubes.
 - Ramps/ Steep driveways.

Vehicle

1. Check installation of the license plate and carrier with regard to the following points:
 - The size of the license plate must be identical to that of the base carrier.
 - Ensure that the number plate and carrier are secured correctly at the side edges (edges bent upwards).
2. Aftermarket parts/modifications/retrofits which are not VW Genuine Accessories could lead to false warning being displayed.
 - Trailer hitch.
 - Lowered ride height.
 - Spoilers.
 - Bumpers.
 - Anti-rodent devices
3. The parking assistance sensors are damaged by external influences.
 - Mechanical damage (stone chips, scratches). (Figure 2,3)
 - Dirt, ice, foreign bodies, and/or vinyl adhered to the sensor.
 - Damage to the bumpers that may indicate an accident (Figure 1).
 - Associated with damage the following entry can be logged in the control unit for parking assistance (Sensor faulty).



Figure 1. Damage by force (example accident/collision).

Figure 1.



Figure 2. Stone chips causing sensor failure.

Figure 2.



Figure 3. Stone impact (surface deformation-dent).

Figure 3



Figure 4. Pressure check for a tight fit and correct attachment of the parking sensors. If the sensor is not snug or feels loose, remove the bumper and reinstall the sensor.

Figure 4.

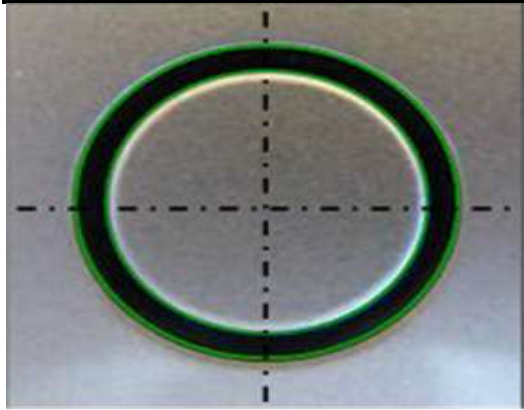


Figure 5.

Figure 5. Verify that the sensor is centered inside of the mounting hole (Figure 5). If the sensor is mounted off-center, remove the bumper and reinstall the sensor.



Figure 6. A correctly installed cable with sufficient length.

Figure 6. Check the cables in the bumper for damage and sufficient length (Figure 6). Cables that are too short can cause damage to the harness.

- If the cable is too tight, correct the routing by moving the support clip so the cable is no longer under tension.



Figure 7. Example of a parking aid sensor connector that is not seated correctly.

Figure 7. Check the connectors on the parking sensors and the socket box for correct installation. If the connectors are not installed properly, secure connection.



94-22-02 - Parking Assist Sensors Providing False Warnings

Release date: 4/12/2022

Re-evaluate the concern:

- If an issue was identified as environmental, or a vehicle issue from the above lists, educate the customer on the limitations of the system.
- If all environmental and vehicle conditions have been ruled out and the concern persists, proceed as follows:
 - Isolate the vehicle to a known good area.
 - Use MVB's to determine the sensor(s) affected.
 - Thoroughly check the affected sensor circuit.
 - Swap affected parking aid sensors or control modules as needed.

Warranty

Incorrectly installed license plate holder or cleaning the sensors are not permitted under warranty.

Parking Assist Sensors damaged by external influences (ex: stone chipping or accident/collision), environmental conditions & aftermarket parts/modifications cannot be claimed under warranty.

Unreasonably replaced parts will be debited.

Required Parts and Tools

No Special Parts required.

No Special Tools required.

Additional Information

All part and service references provided in this Technical Bulletin are subject to change and/or removal. Always check with your Parts Dept. and Repair Manuals for the latest information.