

# Technical Service Bulletin



## 35 Gearbox malfunction message in cluster (DTCs P17D800, P179D00, P174000, P174C, P174B, P174F, P179C, P174A, P174E)

35 13 13 2030477/4 July 12, 2013. Supersedes Technical Service Bulletin Group 35 number 13-10 dated May 7, 2013 for reasons listed below.

| Model(s) | Year      | VIN Range | Vehicle-Specific Equipment    |
|----------|-----------|-----------|-------------------------------|
| S4 / S5  | 2010-2013 | All       | S-Tronic 7 speed transmission |
| RS5      | 2013      | All       | S-Tronic 7 speed transmission |
| S6 / S7  | 2013      | All       | S-Tronic 7 speed transmission |

## Condition

| REVISION HISTORY |           |  |
|------------------|-----------|--|
| Revision         | Date      | Purpose  |
| 4                | -         | Revised <i>Condition</i> (Added "Expanded environmental conditions" criteria)<br>Revised <i>Service</i> (Added "Expanded environmental conditions" instructions)<br>Revised <i>Header Data</i> (Added MY2013 S4, S5, RS5, S6 and S7) |
| 3                | 5/7/2013  | Revised <i>Warranty</i> (Corrected Damage Code)  |
| 2                | 12/7/2012 | Revised <i>Service</i> (Removed mechatronics replacement for fault P179D00)  |
| 1                | 8/10/2012 | Original publication   |

- The following message appears in the information display: "Gearbox malfunction: you can continue driving".
- One or more of the following fault entries are stored in the transmission control module, J217 (address word 02):
  - **DTC P17D800** (Torque limitation due to clutch temperature)
  - **DTC P179D00** (Coolant oil valve electrical error)
  - **DTC P174C** (Valve 1 in the sub-gearbox 1, electric fault)
  - **DTC P174B** (Valve 4 in the sub-gearbox 1, electric fault)
  - **DTC P174F** (Valve 4 in the sub-gearbox 2, electric fault)
  - **DTC P179C** (Main pressure valve, electric fault)
  - **DTC P174A** (Valve 3 in the sub-gearbox 1, electric fault)

# Technical Service Bulletin



- **DTC P174E** (Valve 3 in the sub-gearbox 2, electric fault)
- **DTC P174000** (Clutch temperature monitoring)

In the expanded environmental conditions one or several of the following codes are logged:

- **1F68** • **1F2C** • **1F5A** • **1F5B** • **1F5C**
- **1F5D** • **1F5E** • **22EB** • **22EC** • **1F5F**



Fault codes and expanded environmental conditions codes must match *exactly* or this TSB should not be followed. The instructions to obtain the expanded environmental conditions are shown below

## Technical Background

Poor internal contact area on circuit board will lead to faults. Oil additives can cause the plastic circuit plates to delaminate, causing contact loss.

## Production Solution

Improved circuit board for mechatronics unit.

## Service

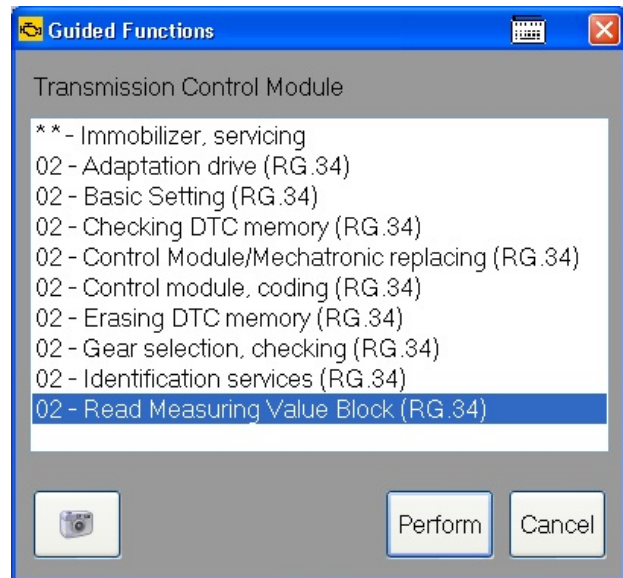
Confirm that this TSB applies by checking the expanded environmental conditions codes:

1. Connect the scan tool to the vehicle.
2. Using ODIS Self Diagnosis:
  - Start Diagnosis.
  - Select tab “Control Module List”.
  - Scroll down list to “02 – Transmission Control Module”.
  - Right-click to select “02 – Transmission Control Module”.
  - Select “Guided Functions” from pop-up menu (Figure 1).
  - Select “Read Measuring Value Block (RG.34)”.
  - Select “Perform” (Figure 2).
  - Select option “Select measuring values individually”.
  - Scroll down list to “IDE04347 Expanded environmental conditions”

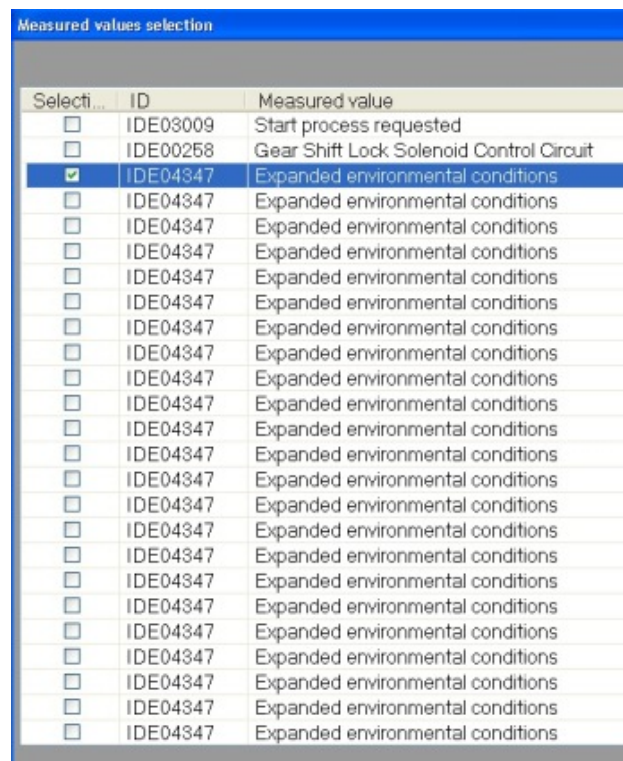


Figure 1. “Guided Functions” Selection

- Select the very top position of “Expanded environmental conditions” (Figure 3).
- Select “OK” to obtain the values.



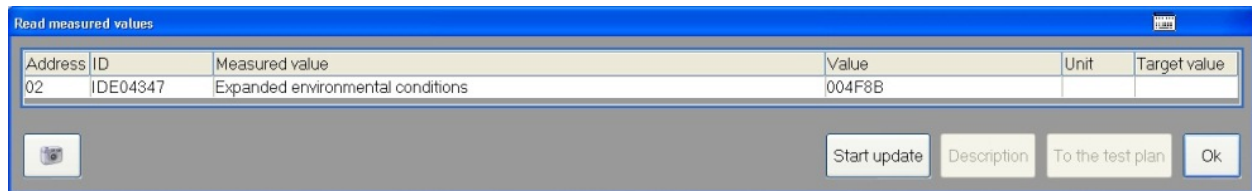
**Figure 2.** Read Measuring Value Block selection



**Figure 3.** Selection of top position of “Expanded environmental conditions”

3. Read the value of the “Expanded environmental conditions” (Figure 4).
  - If the last 4 digits match one of codes listed in the *Condition* section of this TSB, this TSB applies and the repair below should be performed.

- If the last 4 digits do not match one of codes listed in the *Condition* section of this TSB, this TSB does not apply. A TACS case should be opened using the normal Transmission Repair Authorization.



**Figure 4.** Example of “Expanded environmental conditions”. In this example, the last four digits do not match the codes listed in the *Condition* section, so this TSB would not apply.

**If the TSB applies, perform the following repair:**

1. Remove the mechatronics unit per instructions in Elsa: *Repair Manual >> Transmission >> S-Tronic Transmission >> 35 Gears, Shafts >> Removal and Installation >> DSG Transmission Mechatronic J743.*
2. Replace the circuit board per instructions in Elsa: *Repair Manual >> Transmission >> S-Tronic Transmission Internal Components >> 35 Gears, Shafts >> Removal and Installation >> DSG Transmission Mechatronic J743 Circuit Boards.*
3. Reinstall the mechatronics unit per instructions in Elsa: *Repair Manual >> Transmission >> S-Tronic Transmission >> 35 Gears, Shafts >> Removal and Installation >> DSG Transmission Mechatronic J743.*



**Note:**

Be sure to follow all cautions and warnings noted in the Elsa Repair Manual.



**Tip:** If the connector locks are damaged when the circuit board is replaced, the mechatronics unit must be replaced. Once connected, the circuit board cannot be removed and used again.

# Technical Service Bulletin



## Warranty

|                          |  |              |  |
|--------------------------|--|--------------|--|
| <b>Claim Type:</b>       | Use applicable claim type. If vehicle is outside any warranty, this Technical Service Bulletin is informational only.        |              |  |
| <b>Service Number:</b>   | 3511   |              |  |
| <b>Damage Code:</b>      | 0040   |              |  |
| <b>Labor Operations:</b> | Remove and install Mechatronics  | 3511 1900    | 220 TU   |
|                          | Remove and install printed circuit   | 3511 3799    | 40 TU  |
| <b>Diagnostic Time:</b>  | GFF to perform adaptation procedure.   | 0150 0000    | Time stated on diagnostic protocol (Max 40 TU) |
|                          | Road test prior to service procedure   | No allowance | 0 TU   |
|                          | Road test after service procedure  | 0121 0004    | 10 TU  |
|                          | Technical diagnosis at dealer's discretion<br>(Refer to Section 2.2.1.2 and Audi Warranty Online for DADP allowance details) |              |  |
| <b>Claim Comment:</b>    | As per TSB #2030477/4  |              |  |

All warranty claims submitted for payment must be in accordance with the *Audi Warranty Policies and Procedures Manual*. Claims are subject to review or audit by Audi Warranty.

## Required Parts and Tools

| Part Number | Part Description                                | Quantity |
|-------------|---|----------|
| 0B5398009C  | Repair Kit: Printed circuit foil for valve body | 1        |
| 0B5315105TA | Oil pipe with seal                              | 1        |
| 0B5321371E  | Pan Gasket                                      | 1        |

## Additional Information

All parts and service references provided in this TSB (2030477) are subject to change and/or removal. Always check with your Parts Department and service manuals for the latest information.