

**ATTENTION:**

- GENERAL MANAGER
- PARTS MANAGER
- CLAIMS PERSONNEL
- SERVICE MANAGER

IMPORTANT - All Service Personnel Should Read and Initial in the boxes provided, right.


© 2021 Subaru of America, Inc. All rights reserved.



QUALITY DRIVEN® SERVICE

**SERVICE INFORMATION BULLETIN**

**APPLICABILITY:** 2022MY Outback Wilderness

**NUMBER:** 12-232-21R

**SUBJECT:** Trailer Hitch Fascia Panel Template Usage Tips

**DATE:** 12/28/21

**REVISED:** 04/20/22

**INTRODUCTION:**

This Service Information Bulletin provides helpful tips when using the Trailer Hitch Fascia Panel Template (SOA554002) during trailer hitch accessory installation. Use the information below in conjunction with accessory installation guide L101SAN620 and L101SAN000 to help ensure an accurate cut line on the Wilderness bumper fascia.

**PART INFORMATION:**

Part Description	Part Number
Trailer Hitch Fascia Panel Cutting Template	SOA554002



**NOTE:** The Fascia Panel cutting template shown above is available using the normal parts ordering procedure.

<p><b>CAUTION: VEHICLE SERVICING PERFORMED BY UNTRAINED PERSONS COULD RESULT IN SERIOUS INJURY TO THOSE PERSONS OR TO OTHERS.</b></p> <p>Subaru Service Bulletins are intended for use by professional technicians ONLY. They are written to inform those technicians of conditions that may occur in some vehicles, or to provide information that could assist in the proper servicing of the vehicle. Properly trained technicians have the equipment, tools, safety instructions, and know-how to do the job correctly and safely. If a condition is described, DO NOT assume that this Service Bulletin applies to your vehicle, or that your vehicle will have that condition.</p>	<p style="text-align: center;"><b>Subaru of America, Inc. is ISO 14001 Compliant</b></p> <p>ISO 14001 is the international standard for excellence in Environmental Management Systems. Please recycle or dispose of automotive products in a manner that is friendly to our environment and in accordance with all local, state and federal laws and regulations.</p>
--	--

*Continued...*

**SERVICE PROCEDURE / INFORMATION:**

**REMINDER:** Customer satisfaction and retention starts with performing quality repairs.

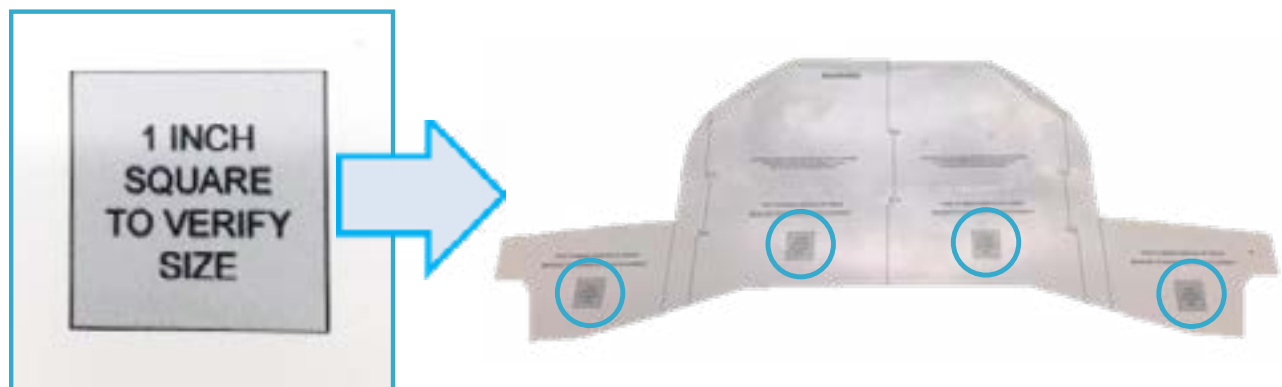
 <b>SUBARU</b> INSTALLATION INSTRUCTIONS	PART NUMBER: L101SAN000
	DESCRIPTION: 2020 OUTBACK TRAILER HITCH

The Outback Wilderness Trailer Hitch Accessory Installation Guide can be found on STIS:  
[L101SAN000](#)

 <b>SUBARU</b> INSTALLATION INSTRUCTIONS	PART NUMBER: L101SANG20
	DESCRIPTION: 2022 OUTBACK TRAILER HITCH PANEL

The Outback Wilderness Trailer Hitch Panel Accessory Installation Guide can be found on STIS:  
[L101SANG20](#)

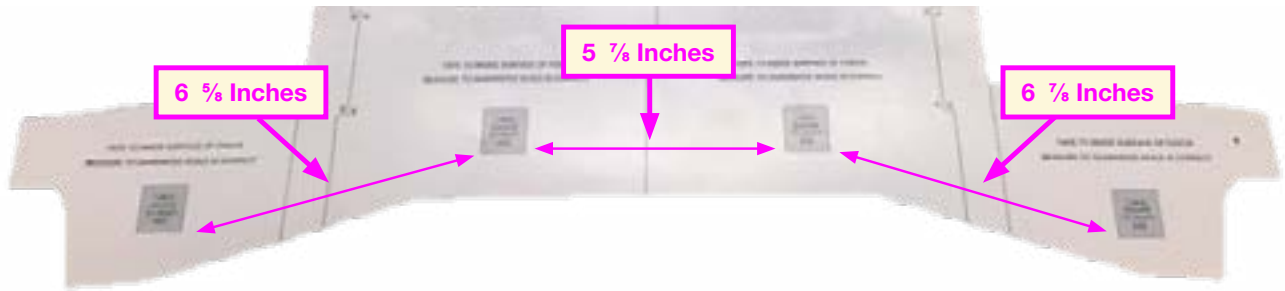
**TIP 1:** The Outback Wilderness Trailer Hitch Panel Accessory Installation Guide contains a printable fascia panel template to be used in place of the Trailer Hitch Fascia Panel Template (SOA554002). When using the printable template version, it is **CRITICAL** the template is printed in “Actual Size”. **ALWAYS** measure to confirm the sizing of each 1 inch square block located on each printable section as shown below.



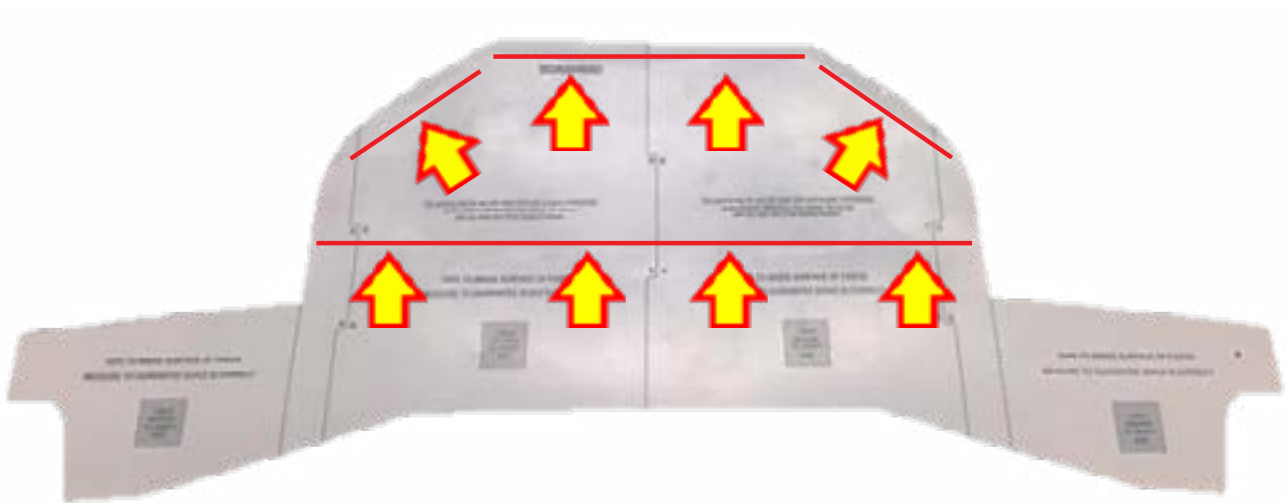
*Continued...*

- **Additional Measurements:**

The measurements listed below, can be made from bottom points of the 1 inch square blocks to further confirm the accuracy of the template.



**TIP 2:** The Trailer Hitch Fascia Panel Template (SOA554002) is made from a heavier gauge paper that provides added rigidity. Pre-bending the template in the highlighted areas pictured below can help provide extra flexibility. Bend the template in both directions along the indicated lines.



**TIP 3:** Use both hands to press down on the template as shown in the photo below. A helper is recommended for taping down the template or tracing with a marker while being held in place. Use a sharp utility knife to **CAREFULLY** cut the bumper fascia.



*Continued...*



[Trailer Hitch Fascia Panel Template Usage Tips Video](#)

**IMPORTANT REMINDERS:**

- SOA strongly discourages the printing and/or local storage of service information as previously released information and electronic publications may be updated at any time.
- Always check for any open recalls or campaigns anytime a vehicle is in for servicing.
- Always refer to STIS for the latest service information before performing any repairs.