



# TSB-STO2022-001: XM Antenna Repair

Rev03182022

## Overview:

This document guides you through the process to repair the XM Antenna installation. Please contact Storyteller should you have any questions or need any assistance with these instructions.

## Applicable Vehicles:

2022 Classic, Stealth, and Beast MODEs

## Safety Alert:

This procedure requires the use of power tools while on the roof rack. Thus, we advise only performing this procedure if you feel comfortable doing so.

## Repair Time Allowed: 0.25 Hours

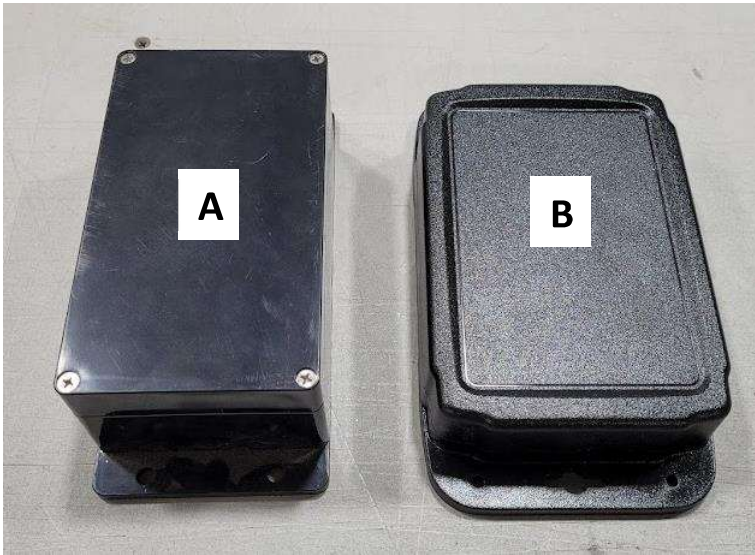
## Tools and Supplies Needed:

- Impact Driver with #2 Phillips Bit
- #1 Phillips Screwdriver
- Double-sided tape or 3/4" screws\*
- Silicone Gasket Maker\*

\* Provided by Storyteller Overland

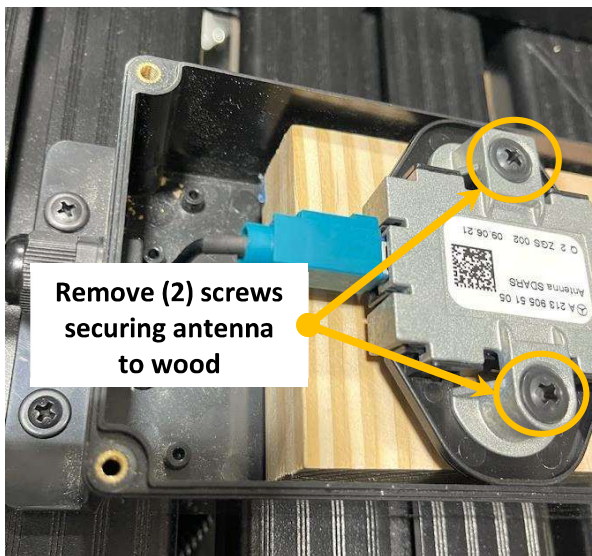
## Repair Procedure:

1. Determine which box version you have installed to your van as shown in figure 1 below. For version A, proceed to step 2. For version B, proceed to step 5.



**Figure 1**

2. Open version A box by using a Phillips head screwdriver to remove the (4) screws from the corners of the lid shown in figure 2. Set screws aside for reinstallation later.
3. Remove the (2) screws securing the antenna to the wood. Then, flip the antenna over and refasten the antenna to the wood using the provided  $\frac{3}{8}$ " screws. See figure 3.



**Figure 3**



**Figure 2**

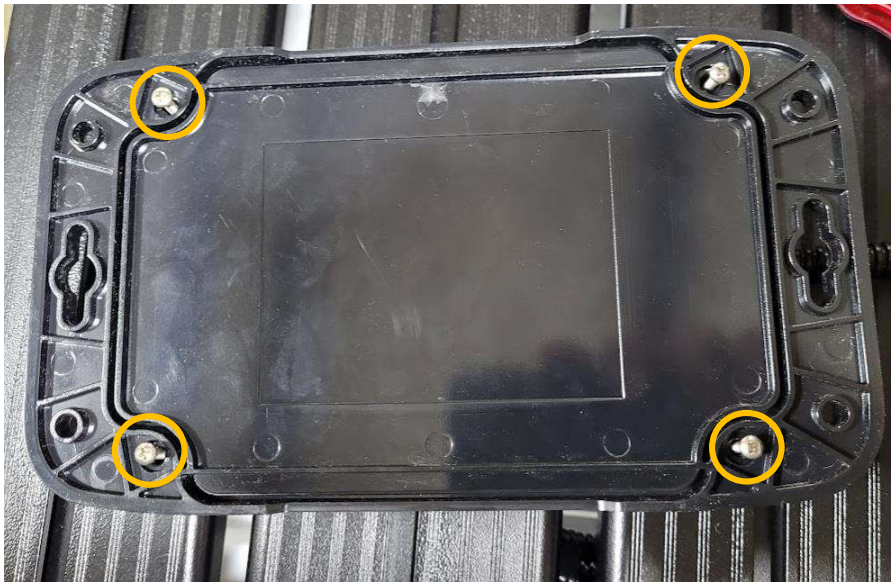
4. Reinstall box lid using the original (4) screws. This completes the procedure for repairing the XM antenna for box version A.

5. For box version B, use an impact driver with #2 Phillips bit to remove the (4) screws securing the box to the roof rack slats shown in figure 4. Set screws aside for reinstallation later.



**Figure 4**  
Remove (4) screws  
securing box to roof  
rack

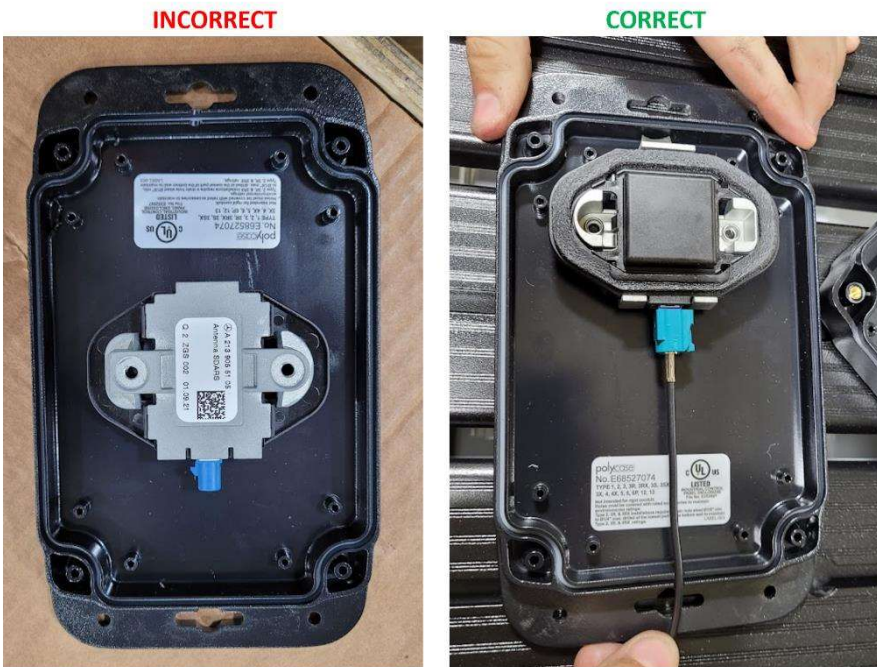
6. Turn the box over and use a #1 Phillips screwdriver to remove the (4) screws securing the box's lid as shown in figure 5. Set screws aside for installation later.



**Figure 5**  
Remove (4) screws  
securing box lid

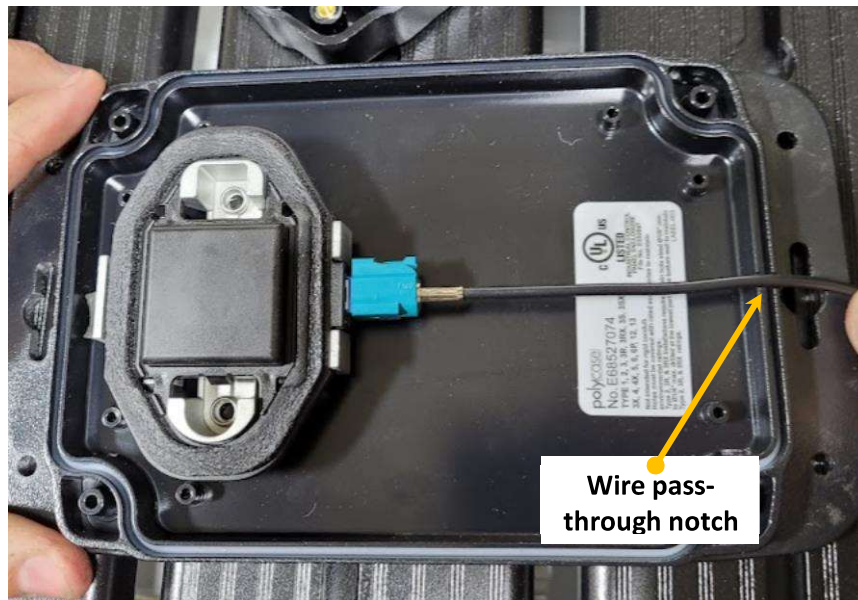
7. Remove lid from the box and clean out any old sealant along the edge where the antenna wire passes into the box.

8. Check orientation of antenna in box. The black square section in the middle of the antenna should be facing up toward the sky when installed as shown in the right side picture below in figure 6. If the orientation of your antenna is incorrect, proceed to step 9. If correct, proceed to step 10.



**Figure 6**  
Incorrect & correct orientation of XM antenna in box.

9. To correct the antenna orientation in the box, pull the antenna out of the box (stuck with double-sided tape) and clean off the original tape. Ensure the box is clean and dry. Apply the provided double-sided tape to the back side (gray side) of the antenna and stick in the box on the end opposite of the wire pass-through notch. See figure 7.



**Figure 7**  
Flip over and reattach antenna in box

10. Apply a bead of the provided silicone gasket maker to the groove of the box across the notch for the wire to sit in as shown in figure 8.



**Figure 8**

Apply silicone gasket maker to box edge

11. Set the wire into the notch then place the box lid back on top. Reinstall the (4) screws to the back of the box to secure the lid.
12. Apply more of the silicone gasket maker on the outside of the box around the wire where it enters the box to form a good seal. See figure 9.



**Figure 9**

Apply silicone gasket maker around the wire where it enters the box

13. Reinstall the box to the roof rack using the original (4) self-tapping screws and aligning the mounting holes in the box with the holes in the roof rack slats. See figure 10.



**Figure 10**  
Reinstall (4) screws  
securing box to roof  
rack