



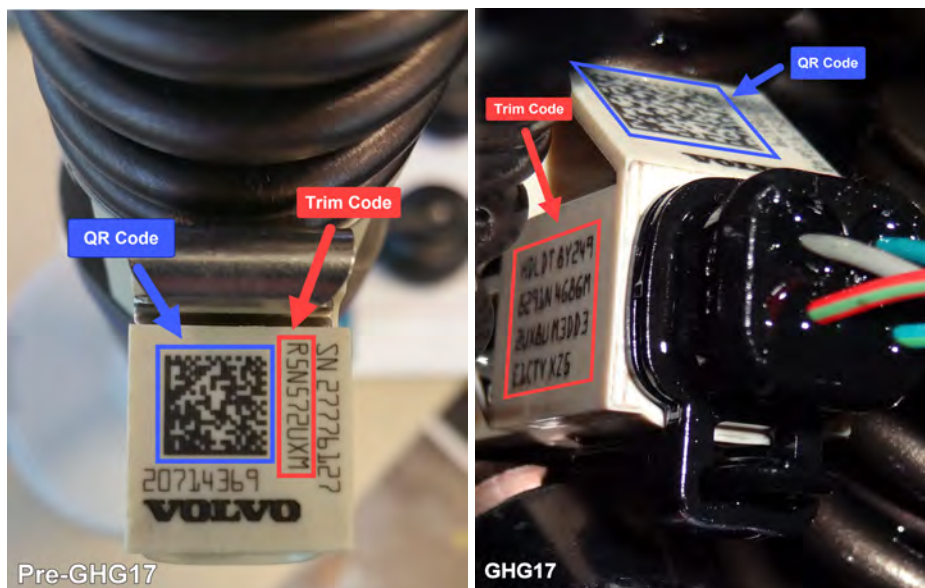
## Volvo Chassis - Injector Trim Code Calibration (Programming) with Premium Tech Tool ( PTT ) – US10+OBD13 And Newer (Includes Common Rail Fuel System) Emissions, Common Model Year 2014 And Newer



> Internal Content

For US13 and newer chassis, trim code programming is now located under the Calibrate tab in PTT. Function Group 23, Operation [2317-07-03-01 Injectors](#) now allows the use of a hand scanner to read the Quick Response ( QR ) code printed on each injector tag.

With the introduction of the common rail fuel system for US17+OBD16 and newer emissions, a new injector design has also been released with improved performance. The F2 injector uses a 38 digit trim code which allows calibration throughout the performance range for precise fuel metering in any condition. Examples of pre-US17 and US17 injector tags and trim codes can be seen below:



Note that both versions' tags include QR codes.

Due to the complexity of the new Trim Code format, a hand scanner is the primary method to be used for entering codes into PTT when replacing injectors or switching Engine Management System ( EMS ) modules. Service News Bulletin [SNV16 - 044 - Quick Response \( QR \) Code Scanners Are Available For Setting Injector Trim Codes \( US13 OBD To](#)

[Live UI](#) t ) also lists additional scanners that can be used. The bulletin can be found [here](#).

 Tags

- [k03590224](#)
- [us10+obd13](#)
- [us14+obd13](#)
- [us14+obd15](#)
- [us14+obd16](#)
- [us17](#)
- [us17+obd16](#)
- [us17+obd18](#)
- [vnl](#)
- [vnm](#)
- [vnr](#)
- [vnx](#)
- [vah](#)
- [vhd](#)
- [11l engine](#)
- [13l engine](#)
- [16l engine](#)
- [volvo](#)

**Related links and attachments**

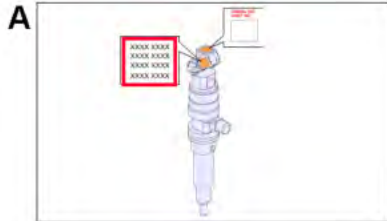
[snv16-044](#)



**Feedback**

[Give feedback](#)

to help improve the content of this article



2371-07-03-01 Injectors

Simulation

Information >> Conditions >> Execution >> Result

Purpose

Program the Engine control module (ECM) with the injector trim codes

Selections

Select the illustration corresponding to the method or test to be performed

A

Manual entry

B

Special tool: 88890187 Barcode Scanner

Continue Cancel



**To:** U.S. and Canada Volvo General Managers  
U.S. and Canada Volvo Service Managers  
U.S. and Canada Volvo Warranty Managers  
U.S. and Canada Volvo Service Technicians

**Bulletin:** SNV16-044  
**Date:** January 3, 2017  
**Valid to:** Until Further Notice  
**Replaces:** N/A  
**Action Required?** **Yes**

**From:** Greg Holderfield – Director, Product Reliability

**Subject:** QR Code Scanners are Available for Setting Injector Trim Codes

---

With the introduction of the OBD'2017 engine family, there are new injectors for improved performance. The new F2 injectors are used on the OBD'17 engines with the common rail high pressure fuel supply. With the F2 injectors, the trim codes will be 38 characters in length. To ensure an accurate calibration, there is now an operation in Tech Tool (2317-07-03-01) that can utilize a QR scanner to read the trim codes from the injector then input them directly to the injector trim code operation. The earlier E3 injectors (9 character trim codes) will continue to work with this operation and can now be scanned using the QR scanner as well. Correct input and calibration of the trim code for the injector is critical to ensure proper engine operation, performance, and economy.

You will need to purchase a compatible QR code scanner from the Aftermarket. The scanners mentioned below will not be available in the Volvo Parts System.

The following list contains scanners that were tested and will work with the above Tech Tool operation.

- DataLogic QuickScan QBT2430-BK-BTK1  
(This is a complete kit and is a wireless scanner)
- Zebra DS4308-DL (this is a wired scanner )
- Zebra DS4308-SR (this is a wired scanner )
- Zebra DS4308-HD (this is a wired scanner )