



# Volvo Chassis - Accessory / Auxiliary Connection Points ( Power/Ground Points ) - VNL, VNR, VNX, VAH, VHD - Model Year 2018 And Newer



## > Internal Content

Six Accessory Plugs are located in the center of the dash below the Fuse and Relay Center ( FRC ) which offer power and ground connections for accessories installed in the aftermarket.

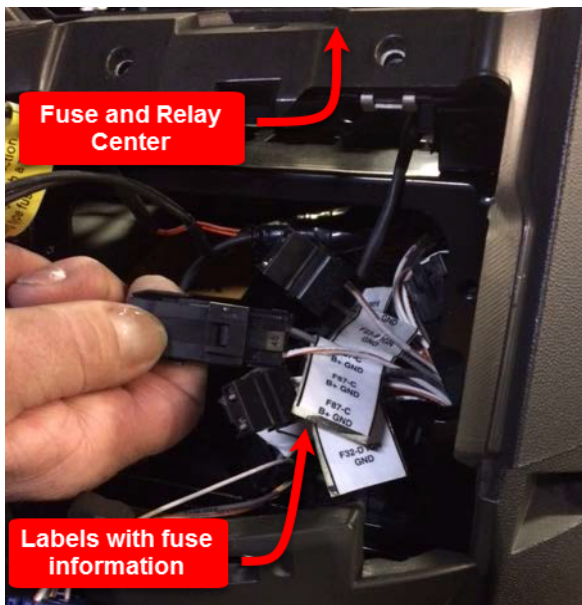
A. To access the connectors:

1. Remove the FRC cover.
2. Remove the center dash trim molding
3. Remove the front cover

B. Install a compatible connector onto the accessory wire(s):

Part	Description	Volvo PN	Vendor PN	QTY
Delphi 2P 280 Series MP US	Connector	25159660	12034343	1
2.0/1.0 280 MP F US Terminal (Cavity A)	Terminal	25168132	12066214	1
0.8/0.5 280 MP F US Terminal (Cavity B)	Terminal	25096383	12034046	1

C. Install the fuse that corresponds to the connector used. The correct fuse for each connector is printed on a harness label by the connector as shown below:



 Tags

[k03010120](#)

[cu15](#)

[cu12 cng](#)

[cu9 cng](#)

[cu9](#)

[volvo](#)

**Related links and attachments**

No links or attachments available



**Feedback**

[Give feedback](#)

to help improve the content of this article