

STRINGS ADJUSTMENT TENSION MANUAL

FLYSCREEN N-SERIES

Plant 310

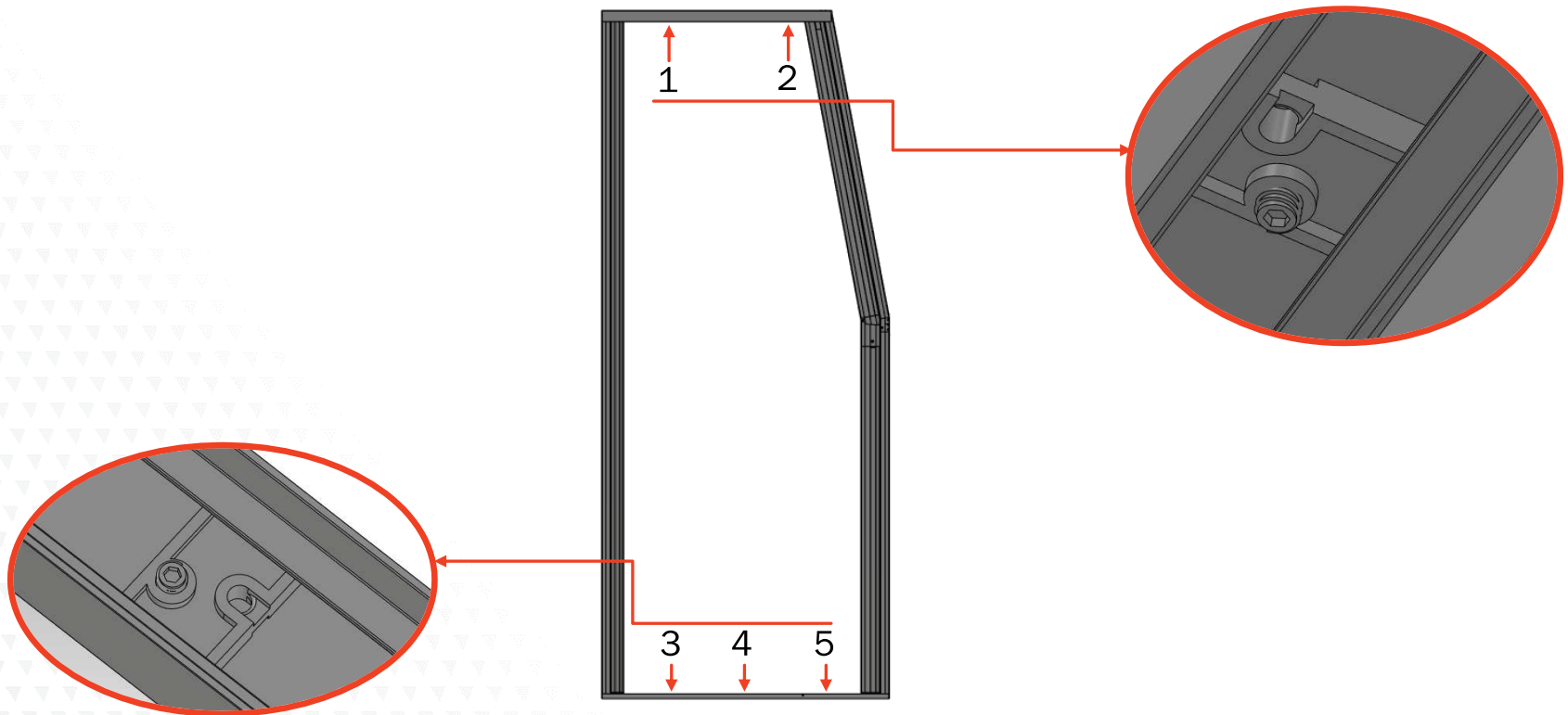


*Whenever, wherever,
we make your experience better.*

INTRODUCTION

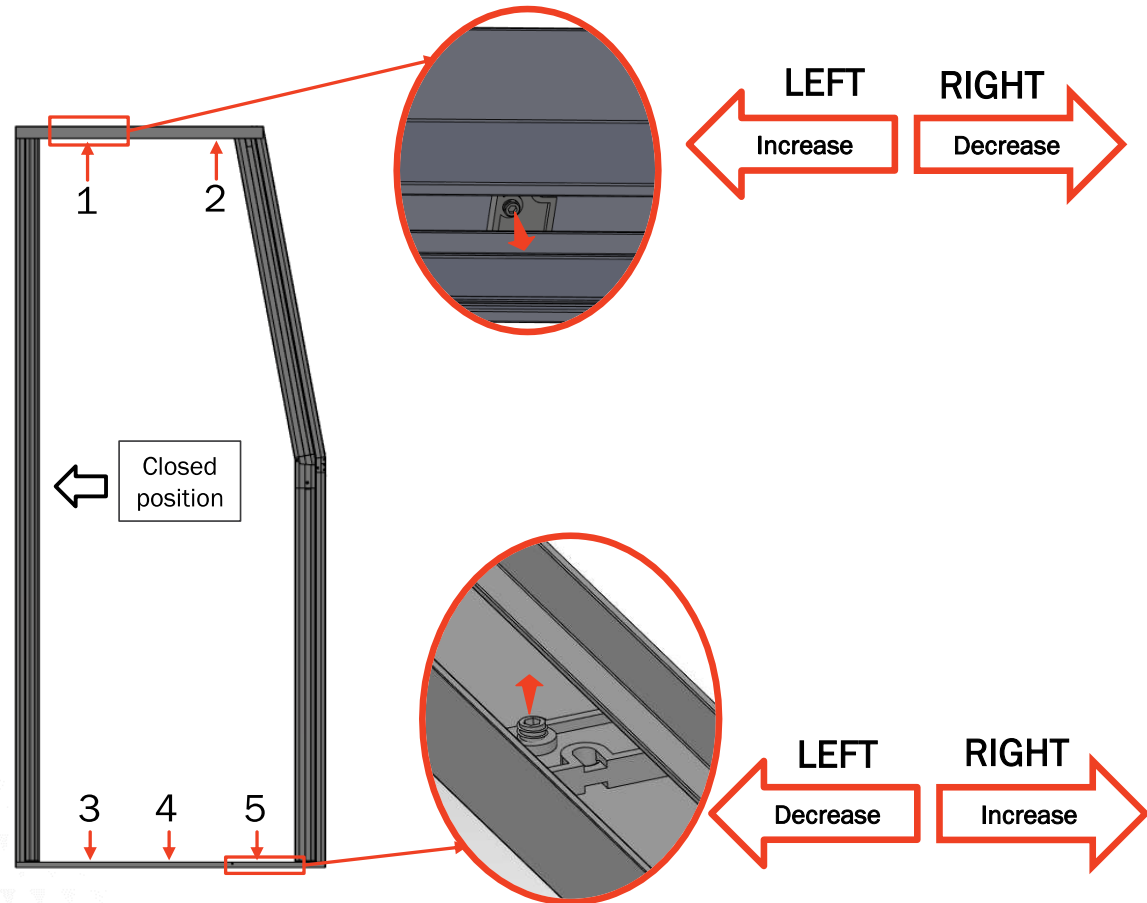
Looking at the flyscreen, keep its sloping side on the right.

On the flyscreen there are 5 wire clamp plates:

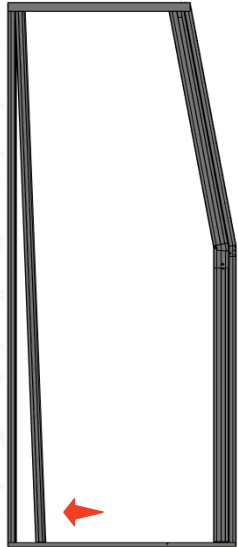


ADJUST STRAIGHT SIDE

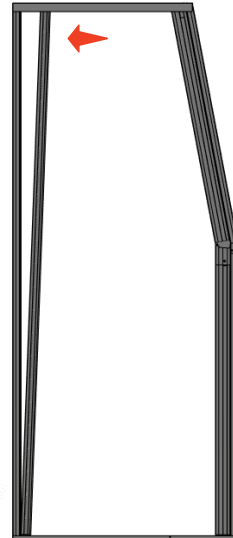
- Place the handle of the flyscreen in closed position and hold it.
- Slightly unscrew the stud bolt N° 1 or N° 5 as needed with a 2 mm allen wrench until the wire clamp plate is free to move.
- Move the wire clamp plate as shown in the picture to increase or decrease the string tension.



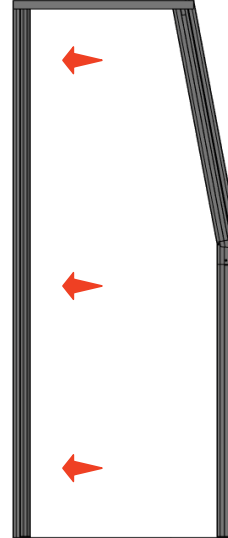
ADJUST STRAIGHT SIDE



If the handle is moved forward at the bottom of fly screen, it means that the tension of the ropes in the lower track is too high.
Reduce the tension of the ropes N° 5.



If the handle is moved forward at the top of fly screen, it means that the tension of the ropes in the upper guide is too high.
Reduce the tension of the ropes N° 1.



When the handle is in the vertical position, it means that the string tension in the upper track and in the lower track is correct. Screw the bolt studs N° 1 and N° 5 to lock the strings in the desired position.

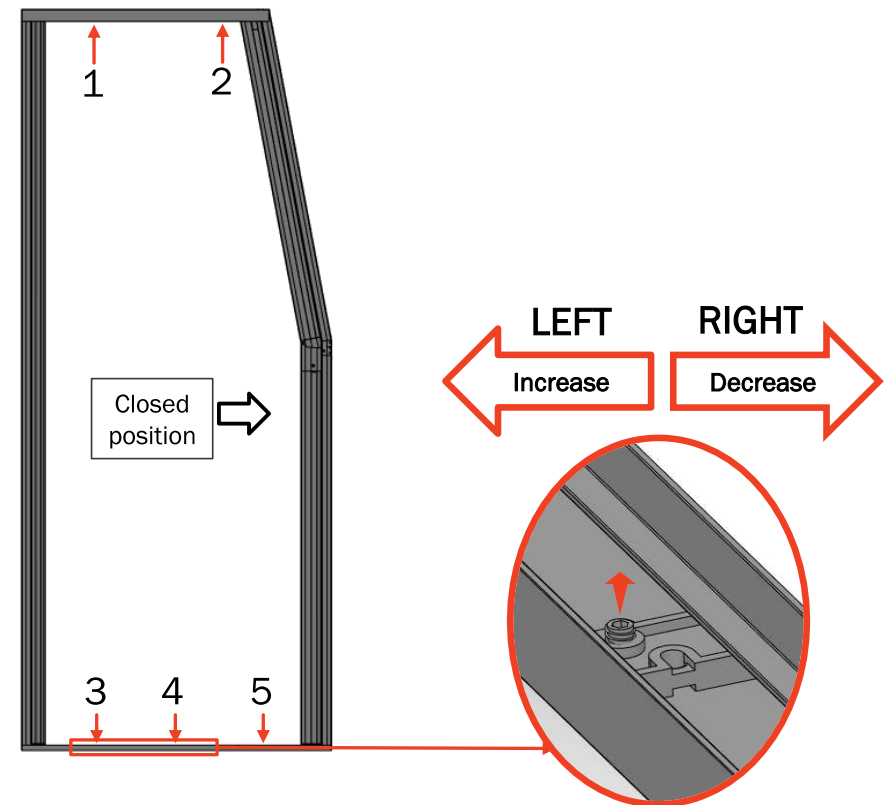
If too much force is required to move the handle, loosen the cords in both the upper and lower tracks slightly.



If the rope tension is too high, the handle will be more difficult to move. If the rope tension is too low, the handle may get stuck on the way.

ADJUST SLOPING SIDE

- Place the handle of the flyscreen in closed position and hold it.
- Slightly unscrew the stud bolt N° 3 or N° 4 as needed with a 2 mm allen wrench until the wire clamp plate is free to move.
- Move the wire clamp plate as shown in the picture to increase or decrease the wire tension.

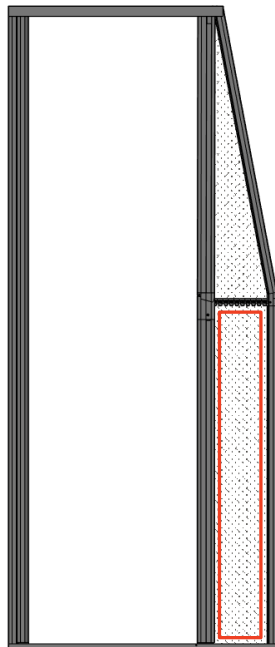


ADJUST SLOPING SIDE

If the strings that pass through the net are loose, increase the tension of clamp plate N° 4.

If the wires that pass through the net are too tight, decrease the tension of clamp plate N° 4.

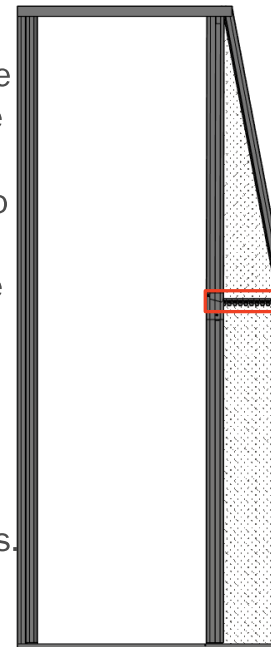
When the desired position is achieved, screw the bolt studs N° 4 to lock the strings.



If the crawler tends to get stuck, increase the tension of clamp plate N° 3.

If the handle is hard to move, decrease the tension of clamp plate N° 3.

When the desired position is achieved, screw the bolt studs N° 4 to lock the strings.



If the rope tension is too high, the handle will be more difficult to move. If the rope tension is too low, the handle may get stuck on the way.