



Service Bulletin


Bulletin No.: 22-NA-088

Date: April, 2022

TECHNICAL

Subject: Roof Panel Joint Front Finish Molding Gap Near Front of Windshield

Brand:	Model:	Model Year:		VIN:		Engine:	Transmission:
		from	to	from	to		
BrightDrop	EV600	2022	2022			All	All

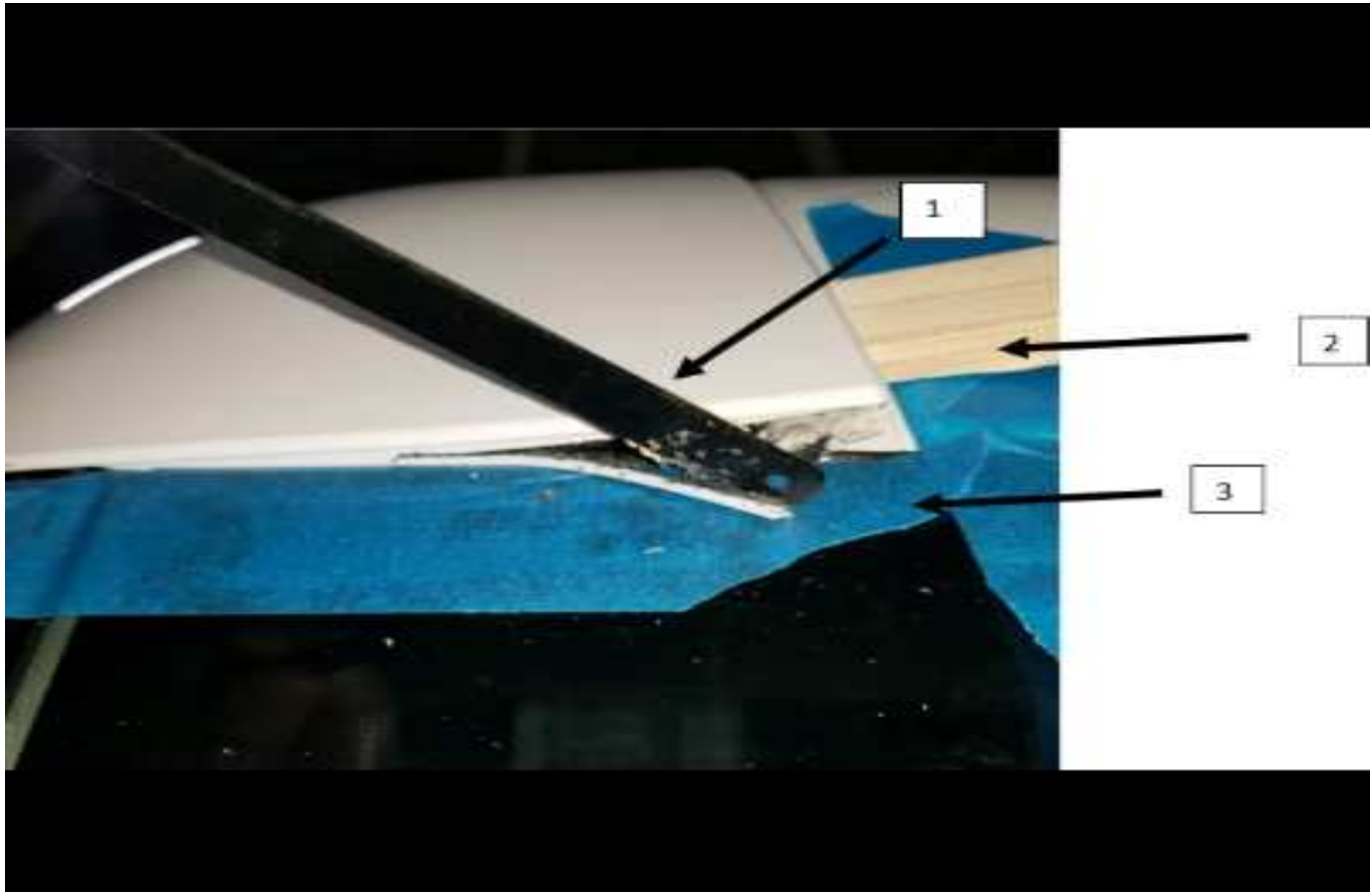
Involved Region or Country	North America
Additional Options (RPOs)	
Condition	 <p style="text-align: right; font-size: small;">6051386</p> <p>Some customers may comment that one, or both, of the roof panel joint front finish moldings sit higher than desired where the forward area of the upper roof cap meets the windshield.</p>
Cause	The cause of the condition may be that the roof finish molding forward edge can contact adhesives used in the build process, thus not allowing it to sit flush.
Correction	Upon verifying the condition, follow the repair steps in the Service Procedure below.

Service Procedure



6051451

1. Starting on either affected side, use a suitable work platform to access the roof panel joint front finish molding.



6051392

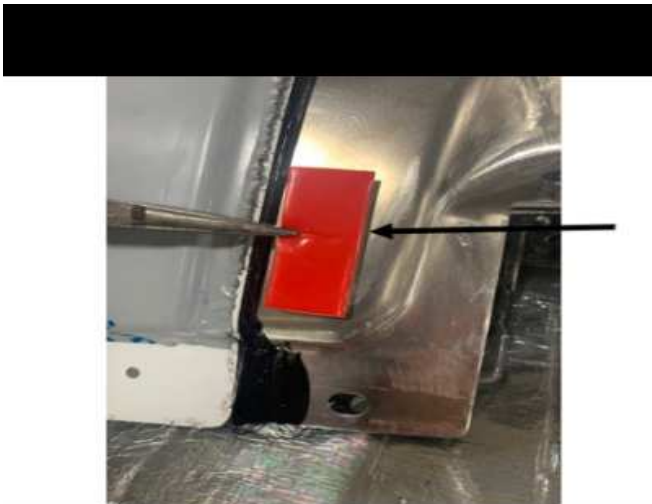
2. Tape off the corner of the windshield and the area where the finish molding meets the body, to protect the surfaces (3).
3. Gently place a non-marring wedge (2) in the top corner of the front roof panel to lift up the finish molding, taking special care to not disengage the plastic retainers connecting the molding to the body.

4. Using a fine-tooth blade (1), trim off the bottom edge of the finish molding flush with the panel. Discard the bottom edge that was cut off.
5. Using a scotch bright pad, scuff the bottom side of the finish molding.
6. Cut 2 pieces of 3M™ Acrylic Foam Tape 4225, White - 2" in length.



6051394

7. Adhere both pieces of tape to one another, as shown.
8. Where the tape will adhere, clean the area that was scuffed, as well as the matching underside of the body with an alcohol wipe.
9. Using a heat gun, warm the tape, the finish molding and the body.



6051396

10. Using needle nose pliers, insert the tape in the position shown above.
11. Wet out the tape by pressing firmly on the corner of the finish molding to seat the panel to the tape.



6051399

12. The finish molding should sit flush, as shown above.
13. If affected, repeat steps # 1–11 on the opposite side.

Parts Information

3M® products are available through your local 3M® distributor. Information about 3M® product retailers in your area may be obtained at 1-866-364-3577 or at <http://3mcollision.com/>

Causal Part	Description	Part Number	Material Allowance
N/A	3M™ Acrylic Foam Tape, White	4225	75 cents (U.S.), \$1.15 (Canada)

Warranty Information

For vehicles repaired under the Bumper-to-Bumper coverage (Canada Base Warranty coverage), use the following labor operation. Reference the Applicable Warranties section of Investigate Vehicle History (IVH) for coverage information.

Labor Operation	Description	Labor Time
1086518*	Roof Panel Joint Front Finish Molding Gap Near Front of Windshield Repair	0.4 hr
Add	Repeat Repair on Opposite Side	0.3 hr

*This is a unique Labor Operation for Bulletin use only.

Version	1
Modified	Released April 25, 2022

