

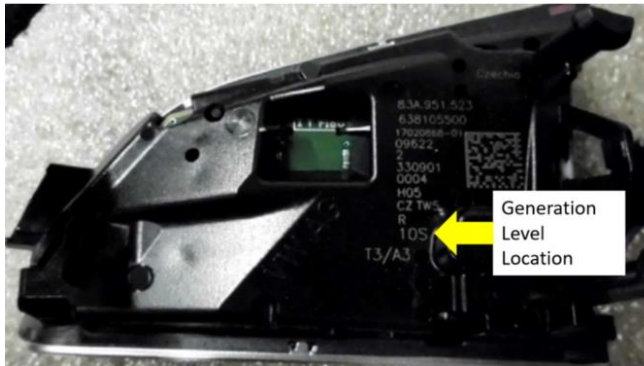
May 3, 2022

**Special Notice SM 38-2022:**

- **83A-951-523-P -XHA (Multifunction button)**
- **4M8-951-523-F**
- **4M8-951-523-G**
- **83A-951-523-J -XHA**
- **83A-951-523-L -6PS**
- **4M8-951-523- -XHA**
- **4M8-951-523-A -XHA**
- **83A-951-523-A -XHA**
- **4M8-951-523-J**

In order to promptly receive your credit and to improve the level of parts that reach your customers: Please return your inventory of the above-listed material numbers to your facing PDC, **no later than 5/24/2022.**

**Parts from the specified generation level provided below correspond to the latest state of development. All previous generation levels must be returned.**



Part Number	Generation Level
83A-951-523-P -XHA	03S
4M8-951-523-F	05S
4M8-951-523-G	05S
83A-951-523-J -XHA	05S
83A-951-523-L -6PS	05S
4M8-951-523- -XHA	20S
4M8-951-523-A -XHA	20S
83A-951-523-A -XHA	20S
4M8-951-523-J	21S

Your cooperation in using the following claims procedures is appreciated:

1. File a separate "Claim with Return" selecting "Dir Sup. Req. Return" under item type, completing your dealer comments with the Special Notice Number and Parts Circular number referenced above
2. Review Parts On Command the following day for the Delivery List document; contact your facing PDC with any problems or delays
3. Enter your 4000XXXXX delivery document number on a YELLOW DEPOT REQUEST RETURN label
4. Adhere the YELLOW DEPOT REQUEST RETURN label to the package(s) containing the returned parts
5. Include one copy of the Delivery Document with the returned part(s).

Items returned after the above-mentioned date WILL NOT be accepted on any type of return/buyback.

Please re-order required new materials using the **same part number**.