

Subject: Damage on the fuel pump cover

Bulletin type: FC

Bulletin Nu: TS30-FC-2106

PQR Nu: -

Rev Nu: 00

Ref. Nu: 200000036358

Araç Modeli: TS30 EPA17

Labor time: 30 min

Release date:

Expiration Of Validity :

**What to do with off coming parts:**

- Scrap
- Return
- Use with additional parts
- On consignment
- No off coming parts

**What to do with outstanding parts of previous revision:**

- Scrap
- Return
- Use with additional parts
- On consignment
- No off coming parts

**Description of the modification:** Damage on the fuel pump cover

Liabile: **Tuğçe Aydil Dalkıran**

Confirmation & Release:

## SAFETY INSTRUCTIONS

### 1. Mechanical Requested Dress Code

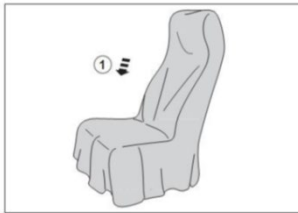


#### WARNING:

- Dress properly to avoid personal injury and damage to the vehicle

- ✓ Always wear protective clothing
- ✓ Do not wear any worn or loose-fitting clothing
- ✓ Remove jewelry before starting to work
- ✓ In case of long hair, use hairnet
- ✓ The illustration on the left shows some of the correct and incorrect clothing
- ✓ Sharp edged items should be avoided in order not to scratch vehicle (i.e. belts, watches, necklace)

### 2. Protect Seats when Mechanic Starts Working

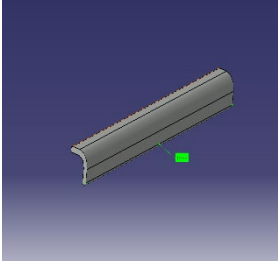


- ✓ Seats, trimming, upholstery stuff and carpeting should be protected with appropriate coverings.

### 3. Welding on the Chassis

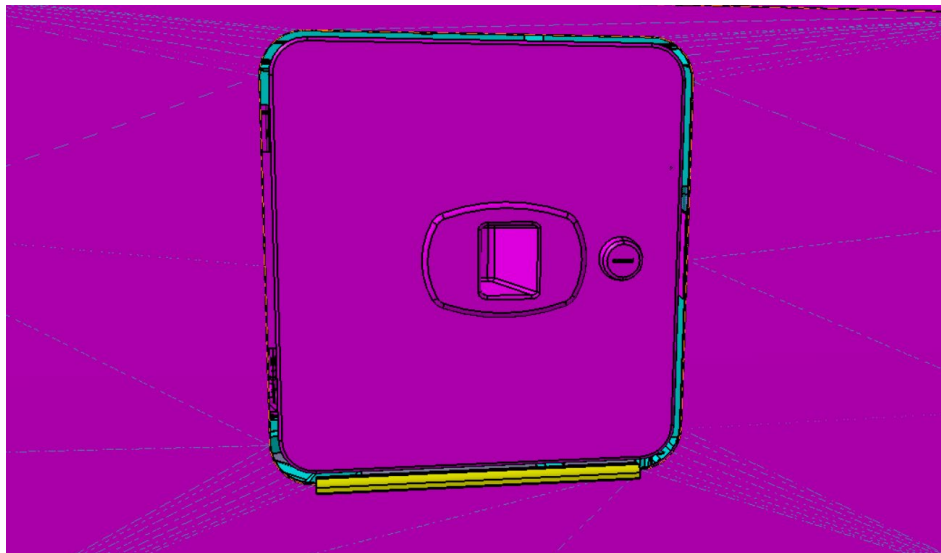
- a. Always disconnect the batteries (starting with the negative lead).
- b. Disconnect the connectors of electrical and electronic equipment (electronic control units, sensors and actuators) if they are less than 2 meters away from the chassis part to be welded or the earth terminal of the welding equipment.
- c. The earth terminal should never be attached to vehicle components such as engine, axles and springs. Arcing on these parts is not permitted, because of the risk of damage to bearings, springs, etc.
- d. The earth terminal must make good contact and be placed as close as possible to the part to be welded.
- e. Plastic pipes, rubber parts and parabolic springs should be well protected against welding spatter and temperatures higher than 70°.
- f. The contact switch must not be in the accessory or contact position. The contact key should be removed.
- g. Reconnect in reversed order of disconnecting. Ensure that a good earth connection is made between chassis, engine and cab.

## INCLUDED PARTS LIST

NUMBER	PART NUMBER	PART NAME	PICTURE	QUANTITY	UNIT
1	YPMC258503-00-01Y	L PROFIL, 186 mm YPMC258503-00Y		1	PIECE
2	SM-57Y	PRIMER	-	0.01	PIECE
3	SM-07Y	SEALER	-	0.01	PIECE

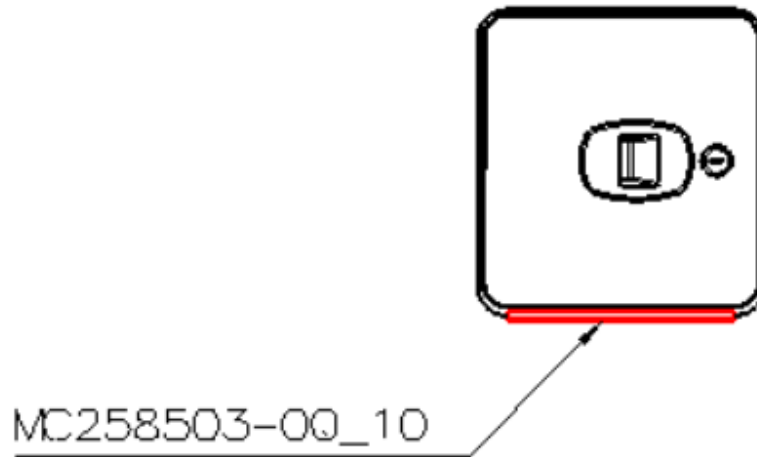
This service bulletin describes application to avoid the damage of the fuel pump cover.

The L profile is assembled under the lid of fuel pump tank that is located behind the front left wheel as shown in the below Figure.1.



**Figure.1**

Draft of the related assembly is also shown in Figure.2.



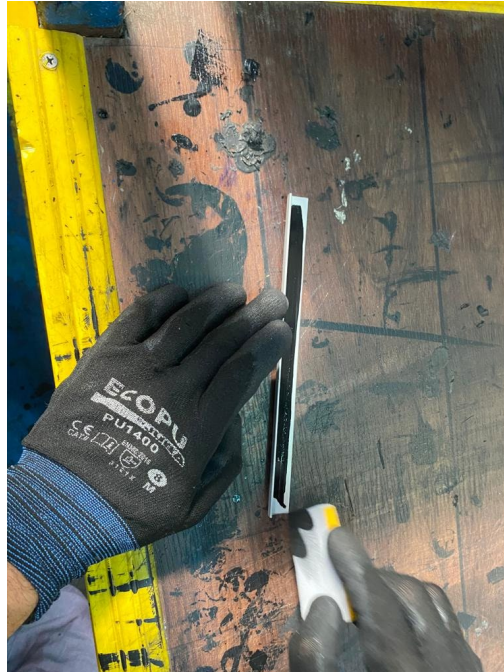
**Figure.2** The draft of the assembly

Before assembling, the sharp corners on the profile must be softened with giving appropriate radius to these corners. Also after the cover is opened ,the place which the profile is located at is marked with an adhesive tape. The application of adhesive tape is shown in Figure.3.

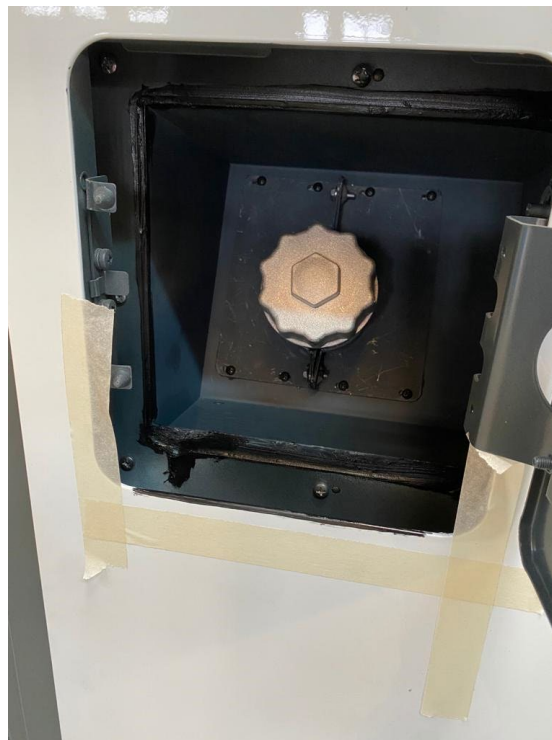


**Figure.3** The application of adhesive tape

Then, the primer is applied to the L profile and the place where the profile is mounted on with the help of an sponge which is shown in Figure.4. and Figure.5, respectively.



**Figure.4** Application of primer to the L profile



**Figure.5** Application of primer to the place where the L profile is mounted

Then, sealer is applied to the L profile to paste the profile to the cover which is shown in Figure.6.



**Figure.6** Application of the sealer to the L profile

The final image of the cover and L profile of assembly is shown in Figure.7



**Figure.7** Final image of the assembly



# SERVICE BULLETIN