



# Technical Service Bulletin

<b>Technical Service Bulletin:</b> TSB210254	<b>Released Date:</b> 05-Jan-2022
<b>Corroded Ignition Control Module Ground Pins</b>	

## Corroded Ignition Control Module Ground Pins

### Warranty Statement

The information in this document has no effect on present warranty coverage or repair practices, nor does it authorize TRP or Campaign actions.

### Contents

#### Product Affected

- B6.7N CM2380 B150B
- B6.7N CM2380 B183B
- B6.7N CM2380 D109B
- ISB5.9G CM2180
- ISL G CM2180
- ISX12 G CM2180 EJ
- ISX12N CM2380 X120B
- L9N CM2380 124B
- L9N CM2380 130B
- L9N CM2380 142B

#### Issue Summary

Ignition control module pins and mating connector terminals show corrosion caused by water migrating along the wires.

Symptom:

- Corrosion on ignition control module pins and mating connector
- Engine will not crank
- No start condition

Root Cause:

- Water migration along the wire caused by insufficient seal

#### Verification

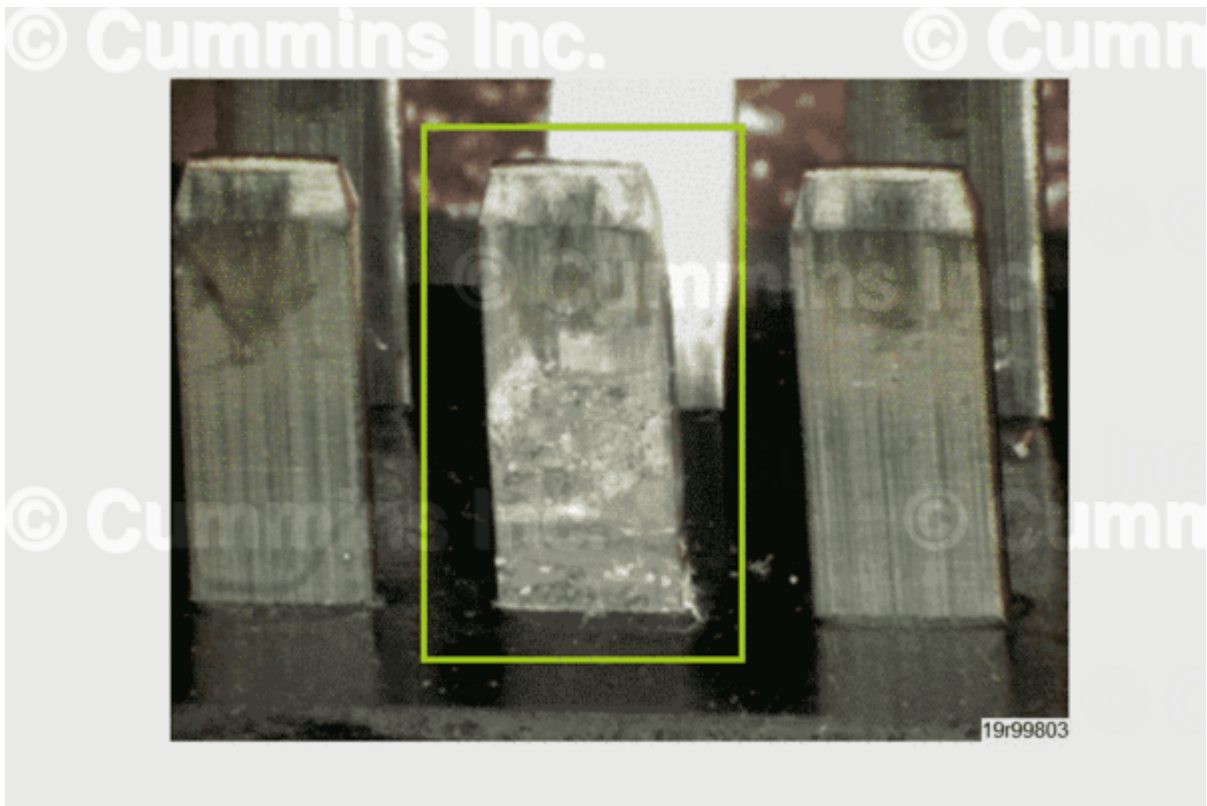


Figure 1, (Center) Ignition Control Module Pin 2 of C1, Ground, Shows Signs of Corrosion; (Right) Pin 3 Shows No Corrosion.



Figure 2, Ground terminal With Corrosion Along Mating Surface.



Figure 3, Copper Wire Strands Within the Ground Terminal Showing Signs of Corrosion.

**Resolution**

- Clean the ignition control module pins with a brass brush.
- Use terminal with part number 4918361 by cutting off the crimp splice and add a solder splice, Part Number 5299281, from the kit, Part Number 5299279.

**Document History**

Date	Details
2021-11-16	Module Created

---

**Last Modified: 05-Jan-2022**

---