



# Service Bulletin

Bulletin No.: 20-NA-197

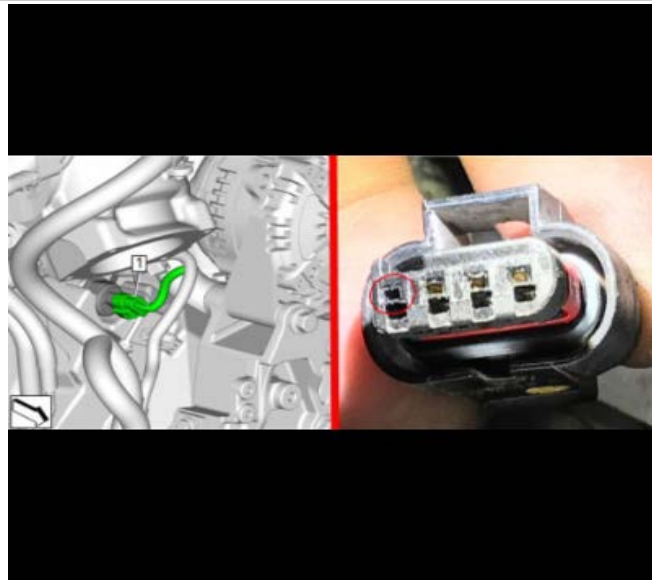
Date: December, 2021

## TECHNICAL

**Subject:** Malfunction Indicator Lamp (MIL) Illuminated - DTC P0087, P0089, P0191, P026D, P1089, P163A, P163B, P2293, P228A, P228B, P228C, and/or P228D Set

Brand:	Model:	Model Year:		VIN:		Engine:	Transmission:
		from	to	from	to		
Chevrolet	Colorado	2016	2021			LWN	
	Express	2017	2021			LWN	
	Silverado	2017	2018			L5P	
	Silverado 2500HD/3500HD	2019	2021			L5D	
	Silverado 4500HD, 5500HD and 6500HD	2019	2021			LWN	
GMC	Canyon	2016	2021			LWN	
	Savana	2017	2021			LWN	
	Sierra	2017	2018			L5P	
	Sierra 2500HD/3500HD	2019	2021				

<b>Involved Region or Country</b>	North America, Middle East, Israel, Palestine
<b>Condition</b>	<p>Some customers may comment that the MIL is illuminated.</p> <p>Some technicians may find one or more of the following DTCs set in the Engine Control Module (ECM):</p> <ul style="list-style-type: none"> <li>• P0087: Fuel Rail Low Pressure</li> <li>• P0089: Fuel Pressure Regulator 1 Performance</li> <li>• P0191: Fuel Rail Pressure Sensor 1 Performance</li> <li>• P026D: Injection Quantity Too High</li> <li>• P1089: Fuel Rail Pressure Performance During Deceleration Fuel Cut-Off</li> <li>• P163A: Control Module Fuel Pressure Regulator 1 Control System Circuitry Performance</li> <li>• P163B: Control Module Fuel Pressure Regulator 2 Control System Circuitry Performance</li> <li>• P2293: Fuel Pressure Regulator 2 Performance</li> <li>• P228A: Fuel Pressure Regulator 1 Control - Forced Engine Shutdown</li> <li>• P228B: Fuel Pressure Regulator 2 Control - Forced Engine Shutdown</li> <li>• P228C: Fuel Pressure Regulator 1 Control Performance - Low Pressure</li> <li>• P228D: Fuel Pressure Regulator 1 Control Performance - High Pressure</li> </ul>
<b>Cause</b>	This condition may be caused by corrosion or damaged at the fuel pressure sensor electrical connector.



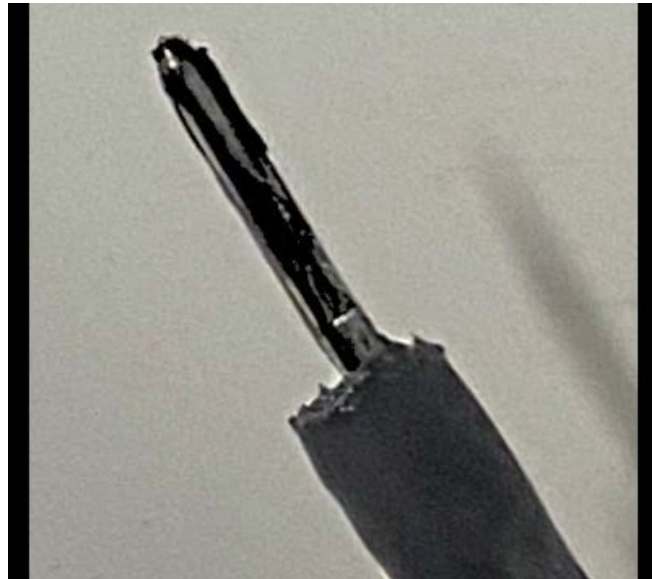
5652222

Inspect the fuel pressure sensor electrical connector for corrosion or damage.

⇒ It may be necessary to use a generous enough amount of dielectric grease in the connector to reach the entire terminal and use J-35616-16 (LT GN) terminal test tool and drag the tool up to 10 times to find/identify corrosion or fretting.

**Correction**

**Note:** When making the final connection of this electric connector to the sensor, please apply dielectric grease prior to installation.



5652223

- If you see a suspect terminal, it may be necessary to removal said terminal and inspect for corrosion, damage and/or signs of the dielectric grease starting to turn black.
- If any of the conditions have been found, replace the electrical connector.

## Service Procedure

Refer to *Connector Repairs* in SI.

## Parts Information

Causal Part	Description	Part Number	Qty
N/A	CONNECTOR, WRG HARN	19367009	1
N/A	ACDelco Dielectric Lubricant*	12377900 (U.S.) 10953529 (Canada)	1
*There is enough material to do additional vehicles. Store the remaining material for future use.			

## Warranty Information

For vehicles repaired under the Bumper-to-Bumper coverage (Canada Base Warranty coverage), use the following labor operation. Reference the Applicable Warranties section of Investigate Vehicle History (IVH) for coverage information.

Labor Operation	Description	Labor Time
5480878*	Fuel Rail Fuel Pressure Sensor Connector Replacement	0.9 hr
*This is a unique Labor Operation for Bulletin use only.		

Version	
	4
Modified	Released September 23, 2020 Revised November 16, 2020 - Added Unique Labor Operation Number to Warranty Information section and 2021 Model Year for 2500/3500HD and 4500/5500/6500HD. Revised March 04, 2021 - Removed P026C Information and Added Additional Vehicle Models. Revised December 06, 2021 - Added Colorado to Model section.

