

MAZDA - LATEST TECHNICAL SERVICE BULLETINS RELEASED - FEBRUARY 2016

RELEASED 2/26/2016

- 00-002/16 - MULTI-MODEL - MAZDA GUIDELINES FOR FACTORY SCHEDULED MAINTENANCE
- 01-007/16 - MULTI-MODEL - i-ELOOP BATTERY SERVICE INFORMATION
- 01-008/16 - 2007-2015 CX-9 - ENGINE COOLANT LEAK FROM LOWER RADIATOR HOSE
- 02-007/16 - MULTI-MODEL - TIRE PRESSURE MONITORING SYSTEM (TPMS) WARNING LIGHT ILLUMINATION - MISUSE PREVENTION LOGIC
- 02-008/16 - MULTI-MODEL - TIRE PRESSURE MONITORING SYSTEM (TPMS) INITIALIZATION PROCESS
- 04-004/16 - MULTIPLE MODELS - BRAKE NOISE, JUDDER AND DRAGGING DIAGNOSIS AND SERVICING
- 09-012/16 - MULTI-MODEL - PAINT DAMAGE - MAZDA POCKET PAINT GUIDE
- 09-013/16 - MULTI-MODEL - EXCESSIVE CONDENSATION OR WATER WITHIN THE HEADLAMP ASSEMBLY - CAUTION
- 09-014/16 - 2013-2016 CX-5 - WHITE MILKY STAINS ON INNER SURFACE OF HEADLIGHT LENS
- 09-015/16 - MULTIPLE MODEL - INCOMING CALL ALWAYS DISPLAY FIRST NAME OF PHONEBOOK / CONTACT LIST

RELEASED 2/24/2016

- 01-006/16 - 2016 CX-5 (SKYACTIV 2.5L A/T) - CHECK ENGINE LIGHT ON WITH DTC P2096:00

RELEASED 2/23/2016

- 02-001/16 - 2014-2016 MAZDA3 - POPPING AND/OR SQUEAKING NOISE FROM FRONT SHOCK ABSORBER AND/OR CREAKING NOISE FROM FRONT LOWER ARM BUSHING
- 02-006/16 - 2013-16 CX-5 AND 2014-16 MAZDA6 - CREAKING NOISE FROM FRONT LOWER CONTROL ARM BUSHINGS
- 04-003/16 - MULTI-MODEL - CLUNK / BANG / BUZZ NOISE DURING FIRST FORWARD MOVEMENT AFTER SITTING
- 07-001/16 - 2016 MX-5 - PASSENGER SIDE FOOTWELL AREA TOO HOT FROM HEAT RADIATED BY HEATER CORE
- 09-011/16 - 2014-15 MAZDA3 AND 2014-16 MAZDA6 - CORROSION AROUND SPOT WELDS IN TRUNK OPENING

RELEASED 2/17/2016

- 02-005/16 - MULTI-MODEL - FRONT / REAR STABILIZER NOISE PREVENTION
- 09-007/16 - MULTI-MODEL - SPEEDOMETER REPLACEMENT PROCEDURE
- 09-008/16 - 2013-2015 CX-5 - VARIOUS ELECTRICAL SYSTEM MALFUNCTION(S) RELATED TO C-15 CONNECTOR CORROSION
- 09-009/16 - MULTI-MODEL - HANDS-FREE BLUETOOTH MODULE AND/OR TEXT MESSAGING TROUBLESHOOTING PROCEDURE
- 09-010/16 - MULTI-MODEL - STAINS FOUND ON PAINT DURING PDI

RELEASED 2/15/2016

- 01-003/16 - MULTI-MODEL - SULFUR SMELL FROM EXHAUST SYSTEM
- 01-004/16 - MULTI-MODEL - BATTERY MAINTENANCE
- 01-005/16 - MULTI-MODEL - BATTERY TEST PROCEDURE REQUIREMENTS USING THE GR8-1291
- 02-004/16 - MULTI-MODEL - SHOCK ABSORBER REPLACEMENT GUIDELINES

RELEASED 2/12/2016

- 02-003/16 - MULTI-MODEL - CHIRP / CLUNK NOISE FROM REAR SHOCK ABSORBERS
- 04-002/16 - 2016 MX-5 - CLUNK/RATTLE NOISE FROM REAR BRAKE

RELEASED 2/10/2016

- 05-003/16 - 2016 MX-5 - GRINDING NOISE FROM CLUTCH PEDAL WHEN DEPRESSING

RELEASED 2/5/2016

- 01-001/16 - MULTI-MODEL - ENGINE START / STOP PROCEDURE WITH ROOM FUSE REMOVED
- 01-002/16 - MULTI-MODEL - PRE-MIXED LONG-LIFE "FL22" ENGINE COOLANT
- 08-001/16 - MULTI-MODEL - PASSENGER AIRBAG DEACTIVATION (PAD) INDICATOR LIGHT ILLUMINATION

RELEASED 2/3/2016

- 09-006/16 - MULTI-MODEL - FRONT POWER SEATS DO NOT SLIDE BACK AND FORTH

RELEASED 2/2/2016

- 09-005/16 - MULTI-MODEL - SIRIUSXM SATELLITE RADIO REGISTRATION TRANSFER AFTER UNIT REPLACEMENT

TRANSFER AFTER UNIT REPLACEMENT

- 09-004/16 - MULTI-MODEL - PROPER USAGE OF DRIVER'S FLOOR MAT

1944

CONFIDENTIAL

UNITED STATES DEPARTMENT OF THE INTERIOR
BUREAU OF LAND MANAGEMENT
WASHINGTON, D. C.

TO: SAC, [illegible]

FROM: [illegible]

SUBJECT: [illegible]

[illegible text]

[illegible text]



[illegible text]

[illegible text]

Tony Lawrence

From: Christopher Ciz
Sent: Thursday, December 03, 2015 3:31 PM
Subject: MAZDA PARTS FLASH

Parts Flash Release – December 3, 2015

For a printable PDF file, please click on the link below each title

Parts Flash Index

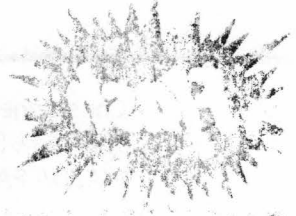
<https://s3.amazonaws.com/tsd.mazdausa.com/Parts Flashes/PartsFlashIndex.pdf>

The following Parts Flash is updated:

MULTI-MODEL (A/T ONLY) – ACCESSORY ALUMINUM ALLOY BRAKE PEDAL APPLICATION

<https://s3.amazonaws.com/tsd.mazdausa.com/Parts Flashes/15-03R.pdf>

SECRET



DEPARTMENT OF DEFENSE

1952

MEMORANDUM FOR THE SECRETARY OF DEFENSE

SUBJECT: [Illegible]

1. [Illegible]

2. [Illegible]

3. [Illegible]

4. [Illegible]

5. [Illegible]

6. [Illegible]

7. [Illegible]

8. [Illegible]

9. [Illegible]



Tony Lawrence

From: Christopher Ciz
Sent: Wednesday, January 27, 2016 3:07 PM
Subject: MAZDA PARTS FLASH

Parts Flash Release – January 27, 2016

For a printable PDF file, please click on the link below each title

Parts Flash Index

<https://s3.amazonaws.com/tsd.mazdausa.com/Parts Flashes/PartsFlashIndex.pdf>

The following Parts Flash is updated:

2013-16 MX-5/MIATA CLUB & LAUNCH EDITION - SERVICE PARTS INFORMATION

<https://s3.amazonaws.com/tsd.mazdausa.com/Parts Flashes/16-01.pdf>

0101

2018

2018

For printing, please click on the link below each title

For printing, please click on the link below each title

For printing, please click on the link below each title

The following is a list of the members of the club for the year 2018

2018-2019 CLUB LIST

NAME	ADDRESS	PHONE	EMAIL
John Doe	123 Main St	555-1234	john.doe@email.com
Jane Smith	456 Elm St	555-5678	jane.smith@email.com
Bob Johnson	789 Oak St	555-9012	bob.johnson@email.com
Alice Brown	101 Pine St	555-3456	alice.brown@email.com
Charlie White	202 Cedar St	555-7890	charlie.white@email.com
Diana Green	303 Birch St	555-2345	diana.green@email.com
Frank Black	404 Spruce St	555-6789	frank.black@email.com
Grace King	505 Willow St	555-0123	grace.king@email.com
Henry Lee	606 Ash St	555-4567	henry.lee@email.com
Ivy Scott	707 Hickory St	555-8901	ivy.scott@email.com
Jack Adams	808 Sycamore St	555-2345	jack.adams@email.com
Karen Baker	909 Magnolia St	555-6789	karen.baker@email.com
Leo Clark	1010 Dogwood St	555-0123	leo.clark@email.com
Mia Evans	1111 Redwood St	555-4567	mia.evans@email.com
Noah Hill	1212 Cypress St	555-8901	noah.hill@email.com
Olivia King	1313 Juniper St	555-2345	olivia.king@email.com
Peter Lee	1414 Fir St	555-6789	peter.lee@email.com
Quinn Scott	1515 Hemlock St	555-0123	quinn.scott@email.com
Rachel Adams	1616 Spruce St	555-4567	rachel.adams@email.com
Samuel Baker	1717 Cedar St	555-8901	samuel.baker@email.com
Tina Clark	1818 Birch St	555-2345	tina.clark@email.com
Uma Evans	1919 Pine St	555-6789	uma.evans@email.com
Victor Hill	2020 Oak St	555-0123	victor.hill@email.com
Wendy King	2121 Elm St	555-4567	wendy.king@email.com
Xavier Lee	2222 Main St	555-8901	xavier.lee@email.com
Yara Scott	2323 Elm St	555-2345	yara.scott@email.com
Zoe Adams	2424 Oak St	555-6789	zoe.adams@email.com



Eaton
1000 Eaton Boulevard
Cleveland, Ohio 44122
tel: 440.523.4075
fax: 440.523.3433
Robertpsaropoulos@eaton.com

March 7, 2016

Via Certified Mail Return Receipt Requested

Associate Administrator for Enforcement
National Highway Traffic Safety Administration
400 Seventh Street, S.W.
Washington, D.C. 20590

Re: 49 C.F.R. § 579.5 Compliance Report

Associate Administrator for Enforcement:

As required by 49 C.F.R. § 579.5, Eaton Corporation hereby submits a copy of each notice, bulletin, and other communications sent to more than one manufacturer, distributor, dealer, lessor, lessee, owner, or purchaser, in the United States, during the previous month, regarding its items of equipment, including each communication relating to a customer satisfaction campaign, consumer advisory, recall, or other activity involving the repair or replacement of equipment that was not related to safety.

Very truly yours,

Robert C. Psaropoulos
Chief Counsel – Vehicle Group

RCP/lmb

Enclosure



Powering Business Worldwide

BACKED BY
Roadranger
SUPPORT

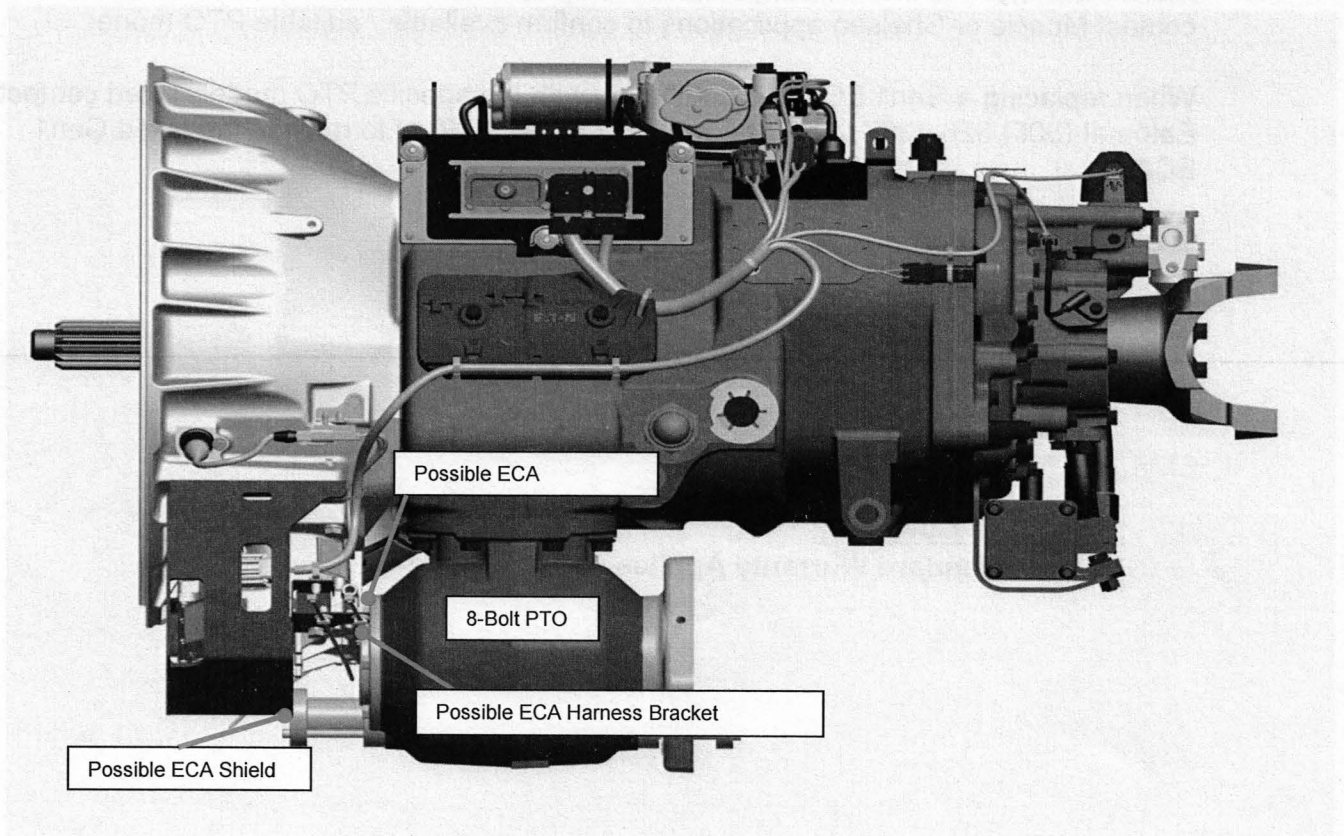
Subject: Gen2 Electronic Clutch Actuator (ECA) Interference

Document Number: TAIB0862

Date: February 22, 2016

Issue Description:

When replacing a Gen1 ECA with a Gen2 ECA, the Gen2 ECA can interfere with specific 8-bolt countershaft PTO models. Interference varies, and depending on the PTO model the interference could be with the ECA, ECA Shield or the ECA Harness Bracket.



Affected Models/Population: UltraShift *PLUS*, Fuller Advantage Automated with Gen2 ECA and specific 8-bolt PTO installations.

Specific Known PTO Model Installations with Gen2 ECA Interferences:

Note: Not all PTO manufactures have been fully evaluated with the Gen2 ECA.

PTO Mfg	PTO Model
Chelsea	238X-3XBD
Chelsea	823X-A3XS
Chelsea	885X-A3XS
Chelsea	885X-A5XS

PTO Mfg	PTO Model
Muncie	828S-Q1XX
Muncie	828S-D1XX

Field Strategy: Prior to ordering the PTO for a new installation with a Gen2 ECA, contact Muncie or Chelsea applications to confirm available / suitable PTO model.

When replacing a Gen1 ECA in combination with the specific PTO models listed contact Eaton at (800) 826-4357 to order a K-3936RX (Gen1 ECA) to replace the failed Gen1 ECA.

Warranty Information:

Warranty Parts:

- K-3936RX

Warranty Labor:

- Per OEM SRT

Warranty Coverage:

- Standard Warranty Applies

The material contained in this bulletin is product improvement information. Eaton is not committed to, or liable for, canvassing existing products. FSUD: 2016-FSUD-2324



Powering Business Worldwide

BACKED BY
Roadranger
SUPPORT

Subject: ServiceRanger 4.x Data Content Updates – All

Document Number: MDIB0045

Date: November 3, 2014

Updated: February 29, 2016

Issue Description:

This document contains all ServiceRanger 4.x Data Content update information. The most recent version is 1602-01-SCB-2336. This document has been created as a reference for the information included in each ServiceRanger data content release.

Current Release:

Data Update 1602-01-SCB-2336

Release Date: 2/17/2016

- Released UltraShift® *PLUS* and Fuller Advantage Transmission ECU software 5569956
- Released UltraShift *PLUS* Transmission ECU software 5569957 for Brazil Medium Heavy-Duty products
- Released the following Fuller Advantage shift calibrations:
 - 2013-2016 Cummins ISX1 FAS_LAS Optimized 5573259
 - 2013-2016 Cummins ISX1 EC3 Optimized for ProStar 5573260
 - 2013-2016 Cummins ISX1 EC3 Optimized 5573261

Data Update 1601-01-SCB-2322

Release Date: 1/28/2016

- Released the following Fuller Advantage shift calibrations:
 - 2013 PACCAR MX NGP Downsped 5573236
 - 2013 PACCAR MX Optimized 5573228
 - 2010 PACCAR MX Optimized 5573235
 - 2010/2013 MaxxForce Navistar 13L Optimized 5573233
 - 2010/2013 MaxxForce Navistar 11L/13L Optimized 5573231
- Released the following configuration options for China hybrid product:
 - Charger Gun Connection Protection (enable/disable/not supported)
 - High Voltage Battery Connected
 - Low Voltage Battery (Below 450V)
 - High Voltage Battery (Above 450V)

Data Update 1512-01-SCB-2315

Release Date: 1/4/2016

- Released UltraShift *PLUS* and Fuller Advantage Transmission ECU software 5569950
- Released the following UltraShift *PLUS* and Fuller Advantage shift calibrations:
 - 2015 PACCAR MX Performance 5573266
 - 2015 PACCAR MX Standard 5573265
 - 2015 PACCAR MX Economy 5573264
- Released Hybrid Control Module software 5501108 for China hybrid products

Data Update 1511-01-SCB-2309

Release Date: 11/16/2015

- Released Gen 2 Electronic Clutch Actuator software 5332102
- Added Coast Down Gear parameter option 6th for Brazil Medium Heavy-Duty UltraShift *PLUS* products
- Released Hybrid Control Module software 5501106 for China hybrid products

Data Update 1510-01-SCB-2296

Release Date: 10/26/2015

- Added support for additional Cummins and Detroit Diesel engine models with UltraShift *PLUS* MXP/VXP transmission models in South American applications.

Data Update 1509-01-SCB-2282

Release Date: 9/18/2015

- Released UltraShift *PLUS* shift calibration On Highway MXP/VXP 140K Lbs. 5573740

Data Update 1508-01-SCB-2275

Release Date: 9/8/2015

- Released UltraShift *PLUS* and Fuller Advantage Transmission ECU software 5569944
- Released Fuller Advantage shift calibration 2013-2016 Cummins ISX1 EC3 Optimized for Prostar 5573245
- Released the following UltraShift *PLUS* shift calibrations:
 - 2016 DD13 LAS Optimized 5573251
 - 2016 DD13 MHP Optimized 5572935
 - 2016 DD15 LAS Optimized 5573252
 - 2016 DD15 MHP Optimized 5572936
- Released UltraShift *PLUS* Transmission ECU software 5569948 for Brazil Medium Heavy-Duty products

- Released Transmission ECU software 5569947 for China Medium-Duty PV transmission products
- Released Hybrid Control Module software 5501102, 5501103, 5501105 for China hybrid products

Data Update 1507-01-SCB-2269

Release Date: 8/17/2015

- Released UltraShift *PLUS* shift calibration 2010/2013 MaxxForce Navistar 13L Optimized 5573233 for use with 2015 model year engines

Data Update 1506-01-SCB-2263

Release Date: 6/29/2015

- Added support for UltraShift *PLUS* 16-speed D-ratio transmission model F-xx316D-LSE for Brazilian market
- Released Hybrid Control Module software 5501101 for China hybrid products

Data Update 1504-01-SCB-2248

Release Date: 5/21/2015

- Released the following UltraShift *PLUS* shift calibrations:
 - Heavy Haul 80-165K Lbs. 5572741 for 18-Spd MXP/VXP products
 - AUS Optimized MXP GCM Linehaul 50-90,000kg 5575746 for Australian market applications
 - South American Grade Performance 5572743 with engine calibration South American Grade Performance 5573504 for South American market applications
- Released UltraShift *PLUS* Transmission ECU software 5569943 for China Medium-Duty PV transmission models.
- Released UltraShift *PLUS* Transmission ECU software 5569940 for China 12-Spd transmission models.
- Released Hybrid Control Module software 5500699 for China hybrid products
- Released the following configuration options for China hybrid product:
 - Sub System Configuration: PBD Isuzu VB21
 - Motor Type: Isuzu 80KW
 - Engine Type: Isuzu 4h
 - Energy Management: Isuzu vb21
 - Low Voltage Control: Electrical, Both

Data Update 1503-01-SCB-2231

Release Date: 4/9/2015

- Released UltraShift *PLUS* and Fuller Advantage Transmission ECU software 5569939

- Released the following UltraShift *PLUS* shift calibrations:
 - 2010/2013 DD13 LAS/VAS Optimized 5573247
 - 2010/2013 DD13 MHP/VHP Optimized 5572933
 - 2010/2013 DD15 LAS/VAS Optimized 5573248
 - 2010/2013 DD13 MHP/VHP Optimized 5572934
 - 2015 PACCAR MX Powertrain Calibration 5573506 engine calibration
- Released Fuller Advantage shift calibration 2015 PACCAR MX13 EP3 5573250

Data Update 1501-01-SCB-2209

Release Date: 1/22/2015

- Released UltraShift *PLUS* Transmission ECU software 5569931
- Released Fuller Advantage shift calibration 2013 Cummins ISX1 EC3 Optimized 5573244
- Released the following Engine Type configuration options for China hybrid product:
 - SDEC 4Cylinder A8454
 - Weichai Diesel WP6
 - Weichai CNG WP6

Data Update 1411-01-SCB-2199

Release Date: 11/24/2014

- Released UltraShift *PLUS* shift calibration 2015 Navistar 13L MXP Optimized 5572744
- Released Fuller Advantage shift calibration 2013-15 Navistar 13L EN3 Optimized 5573246
- Released Hybrid Transmission Control Module software 5569910 and Hybrid Control Module software 5500667 for DAF/Leyland hybrid products

Data Update 1410-01-SCB-2184

Release Date: 10/24/2014

- Re-named UltraShift *PLUS* “Low RPM MHP/VHP 5572929” shift calibration to “Low RPM 5572929” and made it available for MXP/VXP models as well as MHP/VHP models
- Released Hybrid Control Module software 5500695 for China hybrid product
- Released the following configuration options for China hybrid product:
 - Shanghai diesel (SDEC) Engine Type
 - Analog Brake Pedal (enable/disable)

Data Update 1409-01-SCB-2179

Release Date: 9/25/2014

- Released the following UltraShift *PLUS* shift calibrations:
 - 2010-2013 Cummins ISX 15L MHP/VHP Optimized 5572926
 - 2010-2013 Cummins ISX 15L LAS/VAS Optimized 5573237
- Note:** These shift calibrations support 2010 Cummins ISX1/2/3 and the 2013 Cummins ISX2/3 engines.
- Released Fuller Advantage shift calibration 2013 Cummins ISX 12 EC3 Optimized 5573243
 - Released Hybrid Control Module software 5500694 for NAFTA and Solaris hybrid products

Data Update 1408-01-SCB-2167

Release Date: 8/21/2014

- Re-named the following UltraShift *PLUS* shift calibrations:
Old Names:
 - 2013 PACCAR MX LAS/VAS Downsped NGP 5573236
 - 2013 PACCAR MX MHP/VHP Downsped NGP 5572925New Names:
 - 2013 PACCAR MX LAS/VAS Downsped for PB-579/KW-T680 - 5573236
 - 2013 PACCAR MX MHP/VHP Downsped for PB-579/KW-T680 - 5572925
 - Released the following UltraShift *PLUS* shift calibrations:
 - On Highway MHP/VHP 80-140K Lbs. 5572932
 - 2013 Cummins ISX1 LAS/VAS Optimized 5573237
- Note:** This shift calibration shall obsolete the existing 2010 Cummins ISX1 15L LAS/VAS Optimized 5573225 shift calibration.

Data Update 1407-01-SCB-2153

Release Date: 7/18/2014

- Made PEC Type configuration option available for China bus hybrid products

Data Update 1406-01-SCB-2142

Release Date: 6/23/2014

- Released the following UltraShift *PLUS* shift calibrations:
 - On Highway MHP/VHP 80-140K lbs. 5572930
 - Low RPM MHP/VHP 5572929

- Re-named the following UltraShift *PLUS* PACCAR MX shift calibrations:
 - Old Names:
 - 2013 PACCAR MX LAS/VAS Optimized 5573236
 - 2013 PACCAR MX MHP/VHP Optimized 5572925
 - New Names:
 - 2013 PACCAR MX LAS/VAS Downsped NGP 5573236
 - 2013 PACCAR MX MHP/VHP Downsped NGP 5572925
- Released Fuller Advantage shift calibration 2013 Navistar 13L EN3 Optimized 5573240

Data Update 1405-01-SCB-2126

Release Date: 5/21/2014

- Released the following UltraShift *PLUS* shift calibrations:
 - 2013 Cummins ISX 12G Optimized 5573502
 - 2013 Cummins ISX 12G MHP Optimized 5572928
 - 2013 Cummins ISX 12G LAS Optimized 5573239
- Released Hybrid Control Module software 5500692 for Solaris hybrid product

Data Update 1404-02-SCB-2119

Release Date: 4/29/2014

- Made Hybrid Transmission Control Module software 5569910 available with all legacy HCM software for all hybrid products

Data Update 1403-02-SCB-2099

Release Date: 4/2/2014

- Released UltraShift *PLUS* shift calibration 2010/2013 MaxxForce Navistar 13L Optimized MHP/VHP 5572927
- Released the following shift calibrations for China, Solaris, and Isuzu hybrid products:
 - Isuzu
 - Solaris
 - PBD Diesel
 - PBD CNG Low

Data Update 1401-01-SCB-2087

Release Date: 1/31/2014

- Released the following UltraShift *PLUS* shift calibrations:
 - 2013 MX MHP/VHP Optimized 5572925
 - 2013 MX LAS/VAS Optimized 5573236

- Released Hybrid Control Module software 5500690 for Solaris hybrid product
- Released Hybrid Control Module software 5500691 for Iveco hybrid product

Data Update 1312-01-S-2077

Release Date: 1/17/2014

- Released UltraShift *PLUS* Transmission ECU software 5569917
- Released Hybrid Control Module software 5500689 for all hybrid products

Data Update 1311-01-SCB-2067

Release Date: 11/20/2014

This data update brings the ServiceRanger 4 database up-to-date with all the information in the ServiceRanger 3 database. For more information see service bulletin MDIB0021.

Affected Models/Population:

ServiceRanger Version 4.x Database

Field Strategy:

ServiceRanger data updates are installed automatically by the ServiceRanger Update Manager utility. When connected to the internet the Update Manager utility runs in the background, the user is not notified and it does not interfere with ongoing work.

Warranty Information:

None

The material contained in this bulletin is product improvement information. Eaton is not committed to, or liable for, canvassing existing products.



Subject: Gen2 Electronic Clutch Actuator (ECA) Release

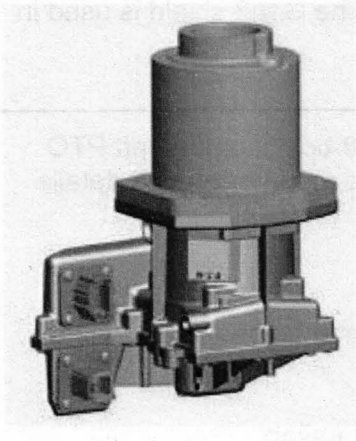
Document Number: TAIB-0861

Date: November 16, 2015

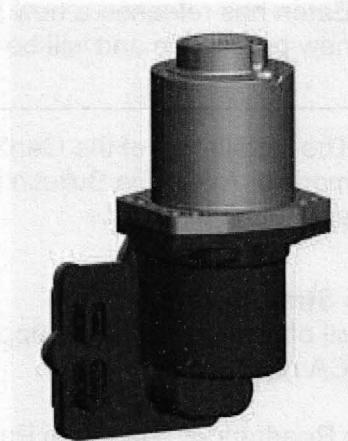
Description: The new Gen2 ECA is being released to production.

The Gen2 ECA introduces a new motor with Deutsch Connectors, and a redesigned shield that surrounds the ECA. The new shield maintains protection for the ECA while enhancing connector accessibility. It also allows for direct, straight alignment of the connector and harness thus eliminating potential side loading of the connector by the use of a separate harness retention bracket mounted directly to the ECA. Two tie-wrap locations on the harness retention bracket are provided to secure the power harness as it is routed in the vehicle.

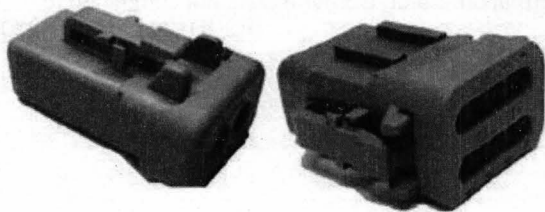
An all-aluminum enclosure provides improved reliability through enhanced sealing capabilities. The new connectors provide positive locking features with a secondary lock system to improve connection integrity.



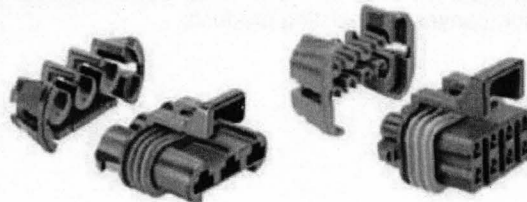
Gen2 ECA (New)



Gen1 ECA (Old)



New Deutsch Connectors



Gen1 Packard Connectors

Models Affected: UltraShift *PLUS*, Fuller Advantage Automated and Hybrid Transmissions

Timing:

The Gen2 ECA is being released to OEM Production and will be available to all Eaton OEMs upon full launch along with Aftermarket parts.

Installation Effects:**OEM Harness**

- The Gen2 ECA requires Deutsch OEM power harness connector.
- Eaton will provide a power adaptor harness to connect the Gen2 ECA to an existing OEM power harness. The adaptor harness is not required if the OEM power harness has been changed to mate with the Gen2 ECA connector.

Transmission Harness

- The Gen2 ECA requires Deutsch transmission harness connector.
- Eaton has released new transmission harnesses that connect directly to the Gen2 ECA. The Gen2 transmission harnesses are used in new production and available as a service part.
- Eaton will provide a transmission adaptor harness to connect the Gen2 ECA to an existing transmission harness. The adaptor harness is not required if the transmission harness has been changed to mate with the Gen2 ECA connector.

ECA Shield

- Eaton has released a new ECA shield for the Gen2 ECA. The Gen2 shield is used in new production and will be available as a service part.

PTO

- The installation of the Gen2 ECA may interfere with some 8-bolt countershaft PTO models. A Service Bulletin is being created to communicate the interference details and repair strategy.

Service Strategy:

Eaton will offer service kits to support Gen1 to Gen2 ECA replacement along with Gen2 to Gen2 ECA replacement.

Visit the Roadranger Electronic Parts Catalog for service part information.

<http://www.inforanger.roadranger.com/index.aspx>

The material contained in this bulletin is product improvement information. Eaton Corporation is not committed to, or liable for, canvassing existing products. FSUD: 2015-FSUD-2306



Powering Business Worldwide

BACKED BY
Roadranger
SUPPORT

Subject: ServiceRanger 4 Approved Vehicle Data Link Adapters

Document Number: MDIB0042 EN-US

Date: November 25, 2013

Updated: November 16, 2015

Issue Description:

ServiceRanger 4 complies with the SAE Surface Vehicle Recommended Practices for J1587 and J1939 vehicle communications, as well as the communication standards as defined by the Truck Maintenance Council (TMC) recommended practice RP1210-B for vehicle link adapter communications.

The following list of vehicle data link adapters have been tested with ServiceRanger 4 and are approved for ECU programming. If an adapter is not in the list there is either a compatibility issue or Eaton has not completed testing for that particular adapter.

Nexiq

<http://www.nexiq.com/>

- USB-Link (P/N 125032) Driver Version: 9.5 or greater
- USB-Link 2 (P/N 124032) Driver Version: 2.1 or greater
- USB-Link 2 with Wi-Fi (P/N 124034) Driver Version: 2.1 or greater

Note: Latest Driver Download Link: <http://nexiq.com/downloads>

Noregon

<http://www.noregon.com/>

- JPRO DLA+ (P/N 12206)
- JPRO DLA+ PLC Adapter (P/N 12204)
- JPRO DLA+ Wireless Adapter (P/N 12208)
- Driver Version All: 4.0.5778.1 or greater

Note: Latest Driver Download Link:

<http://www.jprofleetproducts.com/downloads/drivers/>

DG Technologies

<http://www.dgtech.com/>

- Dearborn Protocol Adapter 5 (P/N DG-DPA5-BT) Driver Version: 2.01 or greater
- Dearborn Protocol Adapter 4 Plus (P/N DG-DPA4PLUS) Driver Version: 1.36 or greater

Note: Latest Driver Download Link:

<http://www.dgtech.com/product/dpa5/downloads/downloads.php>

Cummins

<http://inline.cummins.com/>

Inline 6 (P/N 2892093) Driver Version: 6.4.1.0 or greater

Note: Latest Driver Download Link: <http://cumminsengines.com/inline-downloads/>

Containment/Corrective Action:

Verify your ServiceRanger software version is up-to-date then follow the field strategy below to set up each data link connection in the ServiceRanger software program. Proper setting of each data link connection will ensure reliable and stable communication.

Affected Models/Population:

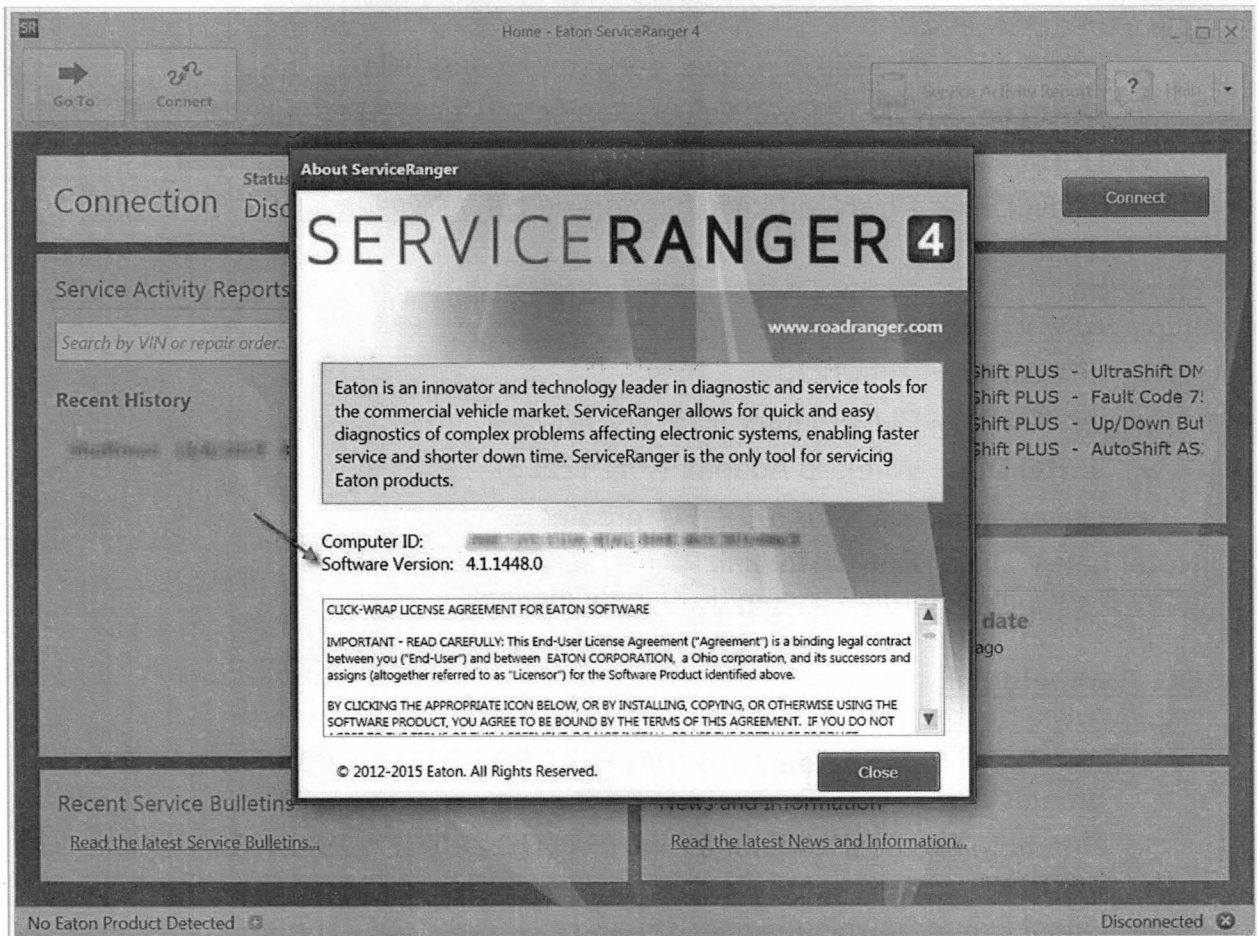
ServiceRanger 4.x



Important: Vehicle high speed CAN connections require ServiceRanger version **4.1.1448.0** or greater

Field Strategy:

1. Click on ServiceRanger 4 Desktop icon to launch the software
2. Click on **Help** in the upper right corner and **About ServiceRanger** to confirm the ServiceRanger version is up-to-date then Close window.



3. If ServiceRanger is up-to-date click on the **Go To** button in the upper left then select the **Settings** function. If ServiceRanger is **not** up-to-date close the program and go to the ServiceRanger webpage on www.Roadranger.com to download the latest version.
4. In the **Settings** function verify your vehicle communication adapter is selected. If it is not use the fields dropdown arrow to select your adapter.
5. Next select the proper and J1587 and J1939 connection settings for your adapter. Some examples are shown below.

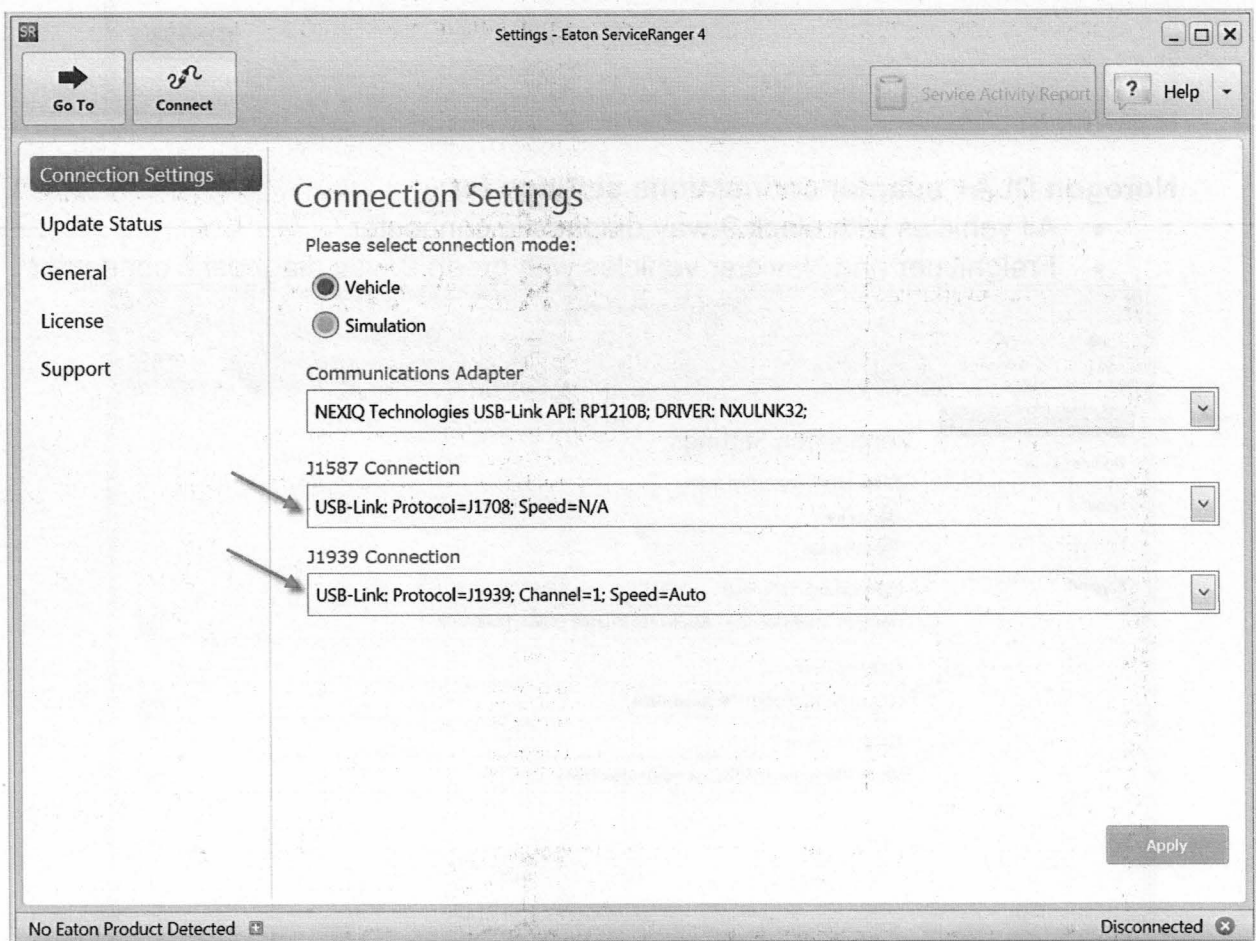


Important: New vehicle high-speed (500K) CAN bus connections (green 9-way diagnostic connector) are different based on the vehicle OEM manufacturer.

Example Vehicle Link Adapter Settings (others not shown are similar):

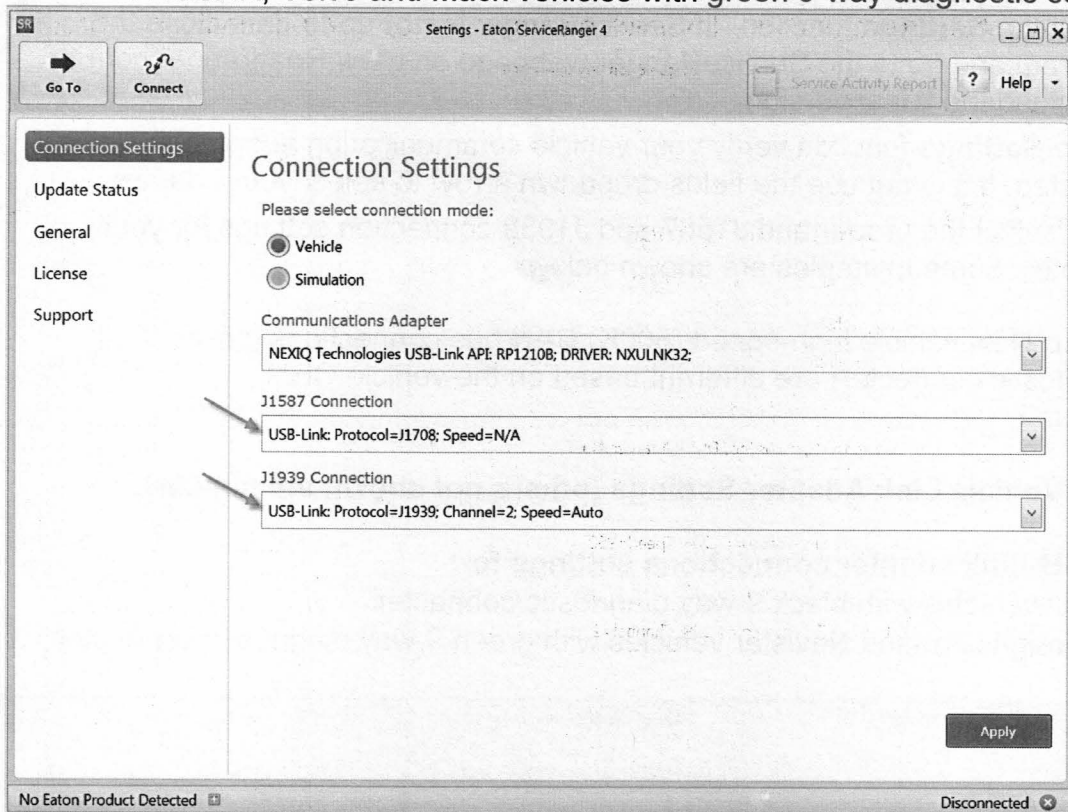
Nexiq USB-Link adapter connections settings for:

- All vehicles with black 9-way diagnostic connector
- Freightliner and Navistar vehicles with green 9-way diagnostic connector



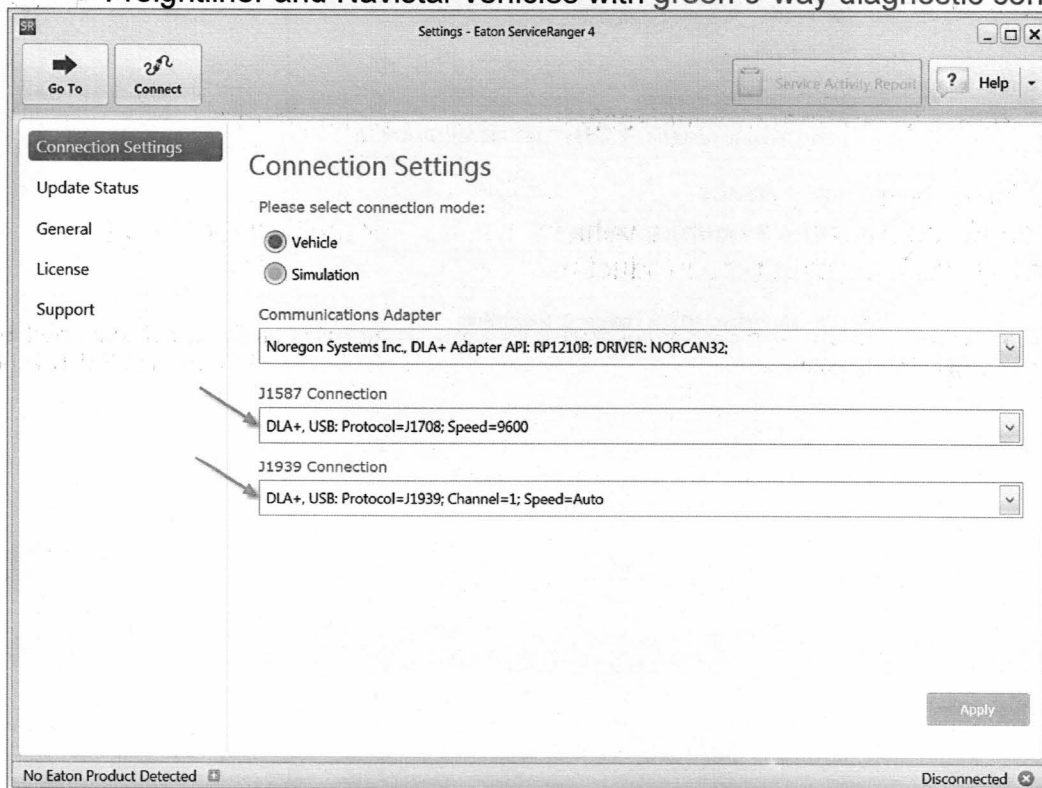
Nexiq USB-Link adapter connections settings for:

- PACCAR, Volvo and Mack vehicles with green 9-way diagnostic connector



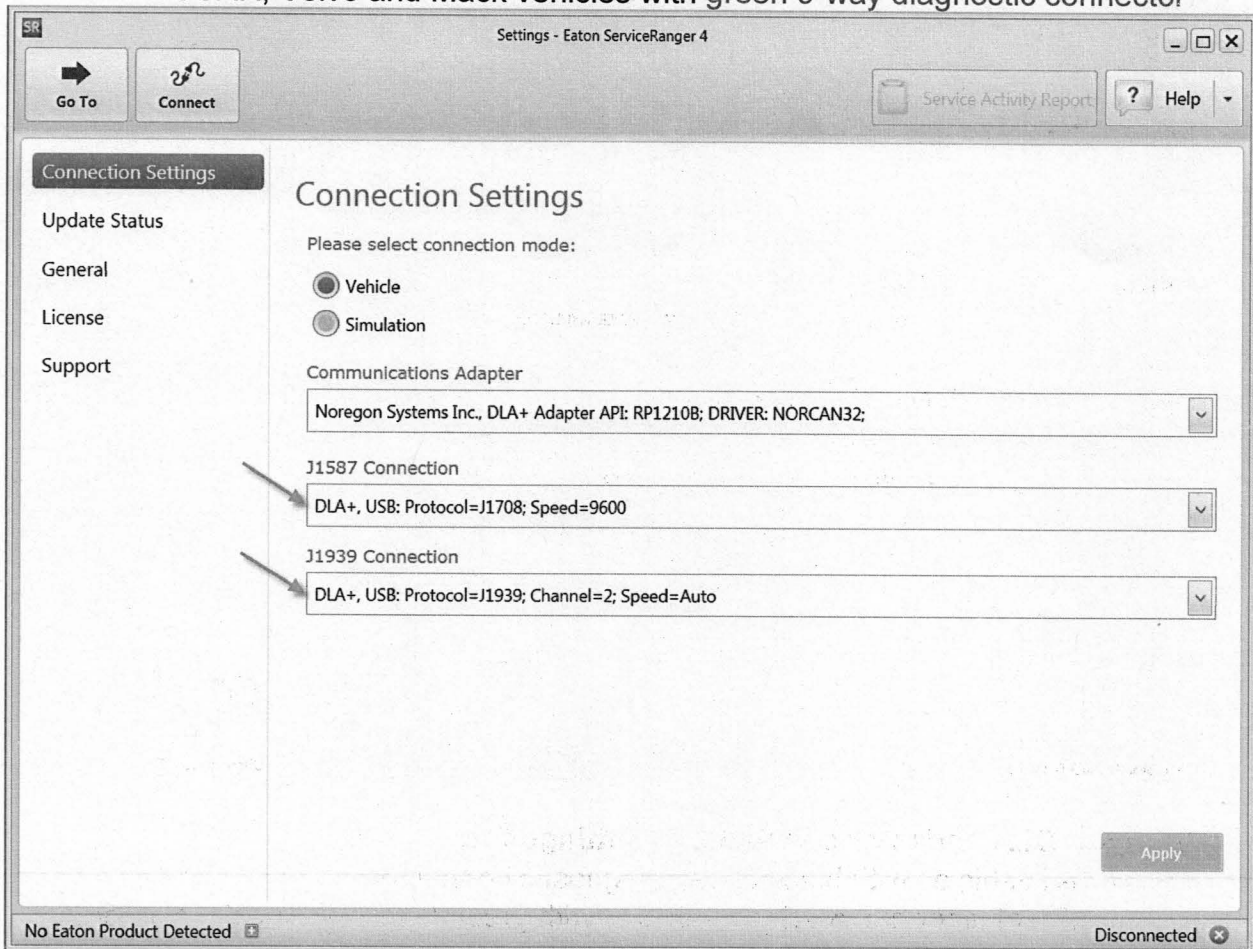
Noregon DLA+ adapter connections settings for:


- All vehicles with black 9-way diagnostic connector
- Freightliner and Navistar vehicles with green 9-way diagnostic connector



Noregon DLA+ adapter connections settings for:

- PACCAR, Volvo and Mack vehicles with green 9-way diagnostic connector



 **Important:** Never use an adapter wirelessly when ECU programming.

Warranty Information:

Damage to an Eaton ECU from using a vehicle link adapter that has not been approved can result in a void of the product warranty.

The material contained in this bulletin is product improvement information. Eaton Corporation is not committed to, or liable for, canvassing existing products. FSUD: 2012-FSUD-2066

April 5, 2016

Via Certified Mail Return Receipt Requested

Associate Administrator for Enforcement
National Highway Traffic Safety Administration
400 Seventh Street, S.W.
Washington, D.C. 20590

Re: 49 C.F.R. § 579.5 Compliance Report

Associate Administrator for Enforcement:

As required by 49 C.F.R. § 579.5, Eaton Corporation hereby submits a copy of each notice, bulletin, and other communications sent to more than one manufacturer, distributor, dealer, lessor, lessee, owner, or purchaser, in the United States, during the previous month, regarding its items of equipment, including each communication relating to a customer satisfaction campaign, consumer advisory, recall, or other activity involving the repair or replacement of equipment that was not related to safety.

Very truly yours,



Robert C. Psaropoulos
Chief Counsel – Vehicle Group

RCP/lmb

Enclosure



Powering Business Worldwide

BACKED BY
Roadranger
SUPPORT

Subject: Recommended Dealer Stocking List

Document Number: TAIB0822

Date: January 8, 2010

Updated: March 7, 2016

Issue Description:

Dealers are unaware of recommended stocking parts.

Containment/Corrective Action:

Eaton Corporation **recommends** this dealer stocking list for all automated transmission models. The list covers parts needed for a wide variety of failure modes that can be repaired in hours when parts are on hand, rather than the possibility of keeping a vehicle “down” for many days while waiting for parts.

Affected Models/Population:

All Automated Products

Field Strategy:

Suggested list of automated transmission parts:

Generation 2

Quantity	Part Number	Description
1	* K-3436	XY Shifter
1	* K-3682	Range / Splitter Valve
3	* K-4148	Speed Sensor Kit
1	K-2604	Reverse Ball Switch
1	* K-3527	Transmission Harness
1	K-3365	Range Cyl Cover Kit
1	K-3366	Splitter Cyl Cover Kit
1	K-3484	Range O-ring Kit
1	K-2803	Splitter O-ring kit
1	K-2170	Filter Regulator
1	* 121000	DM Clutch

Generation 3

Quantity	Part Number	Description
1	* K-4223RX	XY Shifter
1	* K-3682	Range / Splitter Valve
3	* K-4148	Speed Sensor Kit
1	* K-3681	Trans Harness
1	K-3365	Range Cyl Cover Kit
1	K-3366	Splitter Cyl Cover Kit
1	K-3484	Range O-ring Kit
1	K-2803	Splitter O-ring Kit
1	K-2170	Filter Regulator
1	K-4009	Bushing Kit
1	* 121000	DM Clutch

UltraShift PLUS

Quantity	Part Number	Description
1	* K-4223RX	XY Shifter
1	K-3947	Output speed Sensor (Directional)
1	K-3983	Trans Harness VCS, VMS (w/Gen1 ECA)
1	K-3984	Trans Harness MHP, VHP, MXP, VXP (w/Gen1 ECA)
1	K-3985	Trans Harness LAS, VAS (w/Gen1 ECA)
1	K-4257	Trans Harness VCS, VMS (w/Gen2 ECA)
1	K-5256	Trans Harness MHP, VHP, MXP, VXP (w/Gen2 ECA)
1	K-4255	Trans Harness LAS, VAS (w/Gen2 ECA)
3	* K-4149	Speed Sensor Kit
1	* K-4252	Gen2 ECA Kit
1	K-3365	Range Cyl Cover Kit LAS, VAS, MHP, VHP, MXP, VXP
1	K-3366	Splitter Cyl Cover Kit MHP, VHP, MXP, VXP
1	K-4013	Combination Cyl Cover Kit VCS, VMS
1	K-4014	Combination Cyl O-ring Kit VCS, VMS
1	K-2170	Filter Regulator
1	K-3682	Range / Splitter Valve
1	K-4035	Output Yoke Retainer Kit
1	K-4036	Cross-Shaft Assembly Kit
1	K-4037	Clutch Grease Line Kit

Service Bulletin – Product

1	122002-35A	ECA Clutch Kit (w/ LCIB)
1	K-4134	Low Capacity Inertia Brake (LCIB) Assembly Kit

* Indicates parts identified as critical stock items

Note: Part numbers and descriptions that are bolded can be used on multiple generations of transmissions and are interchangeable. Please review this parts list and stock items accordingly. System managers, transmission ECUs, shift controllers and pushbuttons are not on this list because of cost and non-interchangeability between models. Please see the electronic parts catalog at RoadRanger.com for additional part numbers. This is only a suggested parts stocking list.

Warranty Information:

N/A

The material contained in this bulletin is product improvement information. Eaton is not committed to, or liable for, canvassing existing products. FSUD: 2010-FSUD-1331

Timothy J. Nalepka
Senior Vice President & General Counsel



Direct Line: (847) 285-2085
Facsimile: (502) 318-8085

Reliability Driven™

March 2, 2016

BY OVERNIGHT DELIVERY

Associate Administrator for Enforcement
National Highway Traffic Safety Administration
Attention: Early Warning Division (NVS-217)
1200 New Jersey Avenue, SE
Room W48-313
Washington, D.C. 20590

Re: Monthly Submission of Notices Pursuant to 49 CFR 579.5

Dear Sir or Madam:

I have enclosed copies of the documents being submitted by Motor Coach Industries, Inc. for the February 2016 time period. Please let me know if you have any questions. Thank you.

Sincerely,
Motor Coach Industries, Inc.

A handwritten signature in black ink, appearing to read 'Timothy J. Nalepka', written over a faint background.

By: Timothy J. Nalepka

Enclosures

MCI

Motor Coach Industries

200 East Oakton Street | Des Plaines, IL 60018 | 866 624 2622 Toll Free

www.mcicoach.com | www.setra-coaches.com

SETRA

Timothy J. Nalepka
Senior Vice President & General Counsel



Direct Line: (847) 285-2085
Facsimile: (502) 318-8085

Reliability Driven™

February 4, 2016

BY OVERNIGHT DELIVERY

Associate Administrator for Enforcement
National Highway Traffic Safety Administration
Attention: Early Warning Division (NVS-217)
1200 New Jersey Avenue, SE
Room W48-313
Washington, D.C. 20590

Re: Monthly Submission of Notices Pursuant to 49 CFR 579.5

Dear Sir or Madam:

I have enclosed copies of the documents being submitted by Motor Coach Industries, Inc. for the January 2016 time period. Please let me know if you have any questions. Thank you.

Sincerely,
Motor Coach Industries, Inc.

A handwritten signature in black ink, appearing to read 'Timothy J. Nalepka', written over a horizontal line.

By: Timothy J. Nalepka

Enclosures



Motor Coach Industries

200 East Oakton Street | Des Plaines, IL 60018 | 866 624 2622 Toll Free

www.mcicoach.com | www.setra-coaches.com





BENTLEY

April 1, 2016

Mr. Greg Magno
National Highway Traffic Safety Administration
U.S. Department of Transportation
1200 New Jersey Avenue, SE
Washington, DC 20590

Dear Mr. Magno,

SUBJECT: Submission of Communications

There were no communications issued pursuant to CFR49, Part 579.5 for the month of March, 2016.

Sincerely,

Stephen Worrall
Head of Aftersales



Mercedes-Benz

Mercedes-Benz USA, LLC
A Daimler Company

SENT VIA CERTIFIED U.S. MAIL

February 2, 2016

National Highway Traffic Safety Administration
1200 New Jersey Avenue, S.E. (NSA-11)
Washington, D.C. 20590

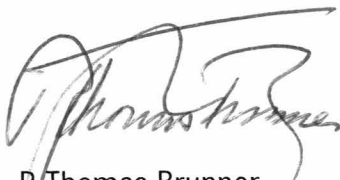
ATTN: Mr. Frank Borris

Dear Mr. Borris:

Enclosed for your information and pursuant to Part 579.5, please find our latest Service and Warranty Bulletins for January, 2016.

Should you have any questions, please do not hesitate to contact Marco Grund, of my staff, at marco.m.grund@mbusa.com.

Sincerely,



R. Thomas Brunner
Department Manager,
Vehicle Compliance and Analysis



Marco Grund
Compliance Engineer
Vehicle Compliance and Analysis

Enclosures

