



Volvo Active Driver Assist (VADA) - Bendix Wingman Fusion Lane Departure Warning System (LDWS) Camera Removal And Installation



> Internal Content

For more information on the Camera Removal And Installation process please click [here](#).



Tags

[k66022636](#)

[volvo](#)

Related links and attachments

No links or attachments available



Feedback

[Give feedback](#)

to help improve the content of this article

Removal of Camera

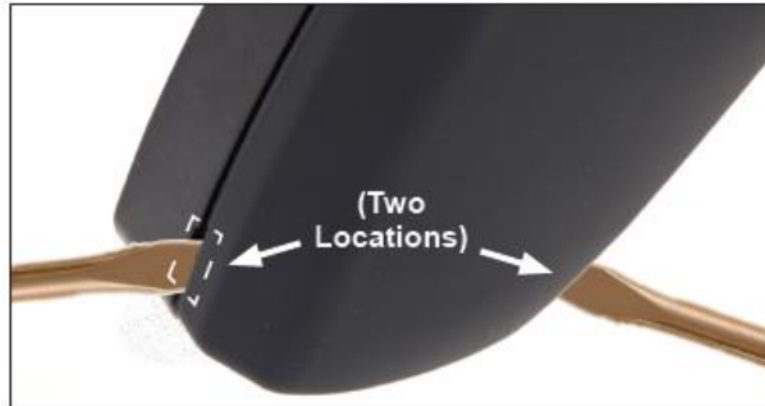


FIGURE 13 - CAMERA RELEASE

See Figure 13. If a camera needs to be removed, locate the two locations at the lower corners where the camera and bracket meet.

1. Insert two medium-sized flat-blade screwdrivers into the slots, fully seating them.
2. Then – ***gently prying by moving the screwdriver handles away from the windshield a small amount – push against the retaining clips to release the camera.***

Important Note: If the locking tabs on the camera bracket, mounted to the windshield get damaged or broken, the ENTIRE windshield with a new bracket installed must be used to fix this issue. The windshield mounted bracket CANNOT be replaced separately.

Installation of Camera

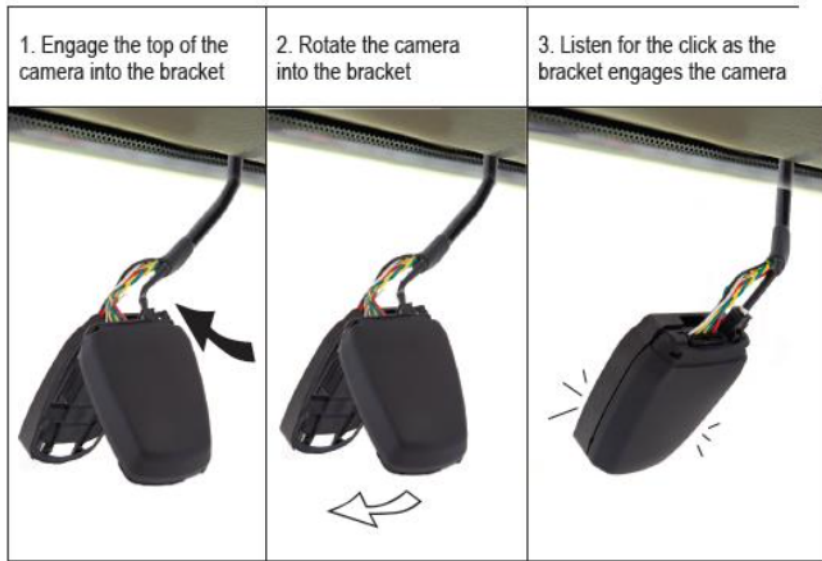


FIGURE 12 - CAMERA INSTALLATION

To install the camera into the bracket, *See Figure 12.*

1. Engage the top of the camera into the bracket. There are two channels in the camera that need to line up with the bracket housing, so check to be sure that both sides engage into the bracket.
2. While maintaining the engagement at the top of the camera, rotate the rest of the camera body about that hinge point, towards the bracket.
3. When the camera and bracket meet, there are retaining clips built into the bracket that will snap into place, holding the camera in position.



4. **Double-check that the camera is fully engaged into the bracket, by verifying that the channel between them has the same gap all the way around. Pull gently on the camera to check that the tabs at the top and bottom are engaged and that there is no play. *See Figure 12.***
5. Remove any tape, or temporary marks made, during the installation.