



## **Mack Chassis - Equipped With An Automated Manual Transmission (AMT-D, mDrive) - Unable To Program Transmission Electronic Control Unit (TECU) That Comes With A Reman Transmission; Information For Programming TECUs For Different Emissions Levels - FSB**



> **Internal Content**

For information on programming the correct software into a TECU, refer to bulletin [FSB 432-014 Transmission ECU Compatibility](#). The FSB can be found in [Impact](#) under the service tab.



Tags

[mack](#)

[k73833525](#)

### **Related links and attachments**

No links or attachments available



### **Feedback**

[Give feedback](#)

to help improve the content of this article

## Transmission ECU Compatibility CHU, CXU

### **FSB 432-014, Transmission ECU Compatibility**

(October 2014)

The current transmission ECU (TECU) hardware for the mDrive transmission used in the US2010 emissions, OBD2013 and newer vehicles in North America is the same part number (21484418). The software that is programmed into them is what makes them different.

The following instructions were written for converting a US2010 emissions TECU to an OBD2013 TECU using premium tech tool (PTT) version 2. The TECU can be converted backwards from OBD2013 to US2010 using PTT version 1 or PTT version 2 and the appropriate procedure.

**Note:** This process can only be performed on the latest TECU hardware part number 21484418.

#### **Required Tools**

Premium Tech Tool version 2.03.41 or higher

Vocom Diagnostic Connector 88890304

Communication Interface 88890300

**Note:** Using other interfaces may affect programming speed.

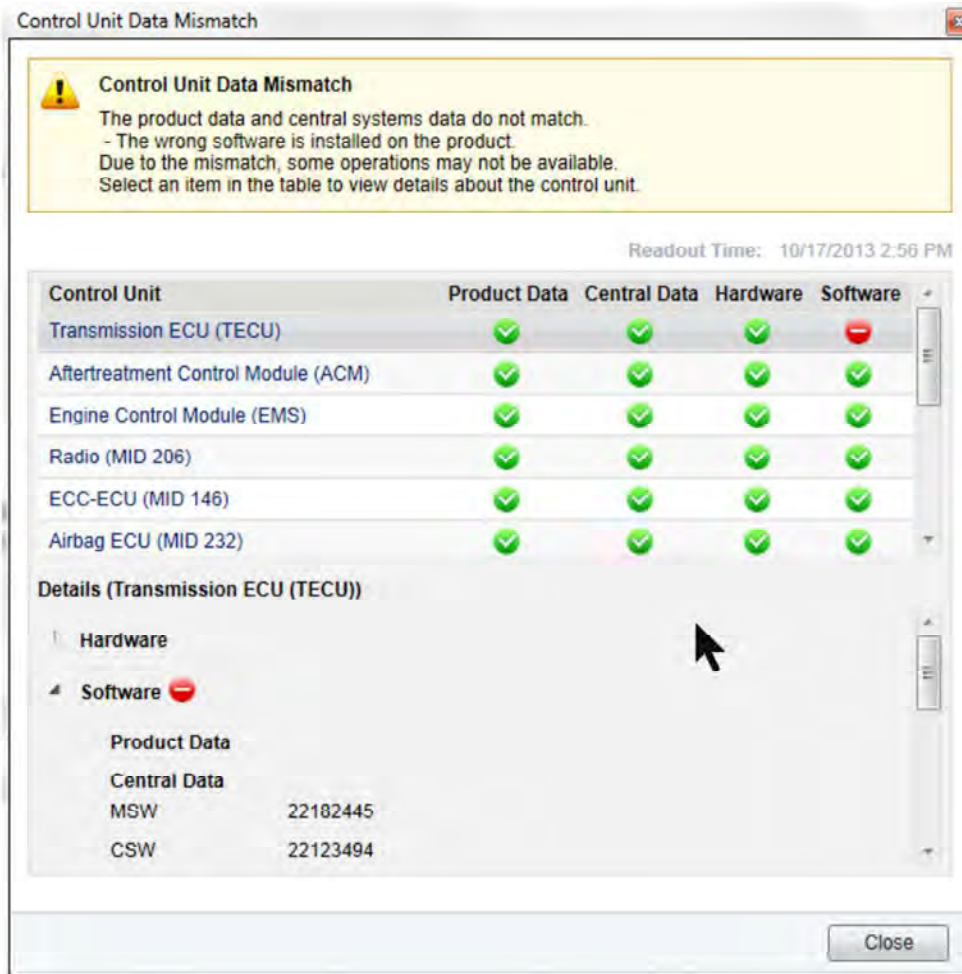
Special tools 9990041, 9990061/62 and 9998699

**Note:** Check Premium Tech Tool version by clicking on Help tab and then click on "About Tech Tool".

## Procedure

Connect PTT to the vehicle, identify the unit and verify that PTT can communicate with the transmission.

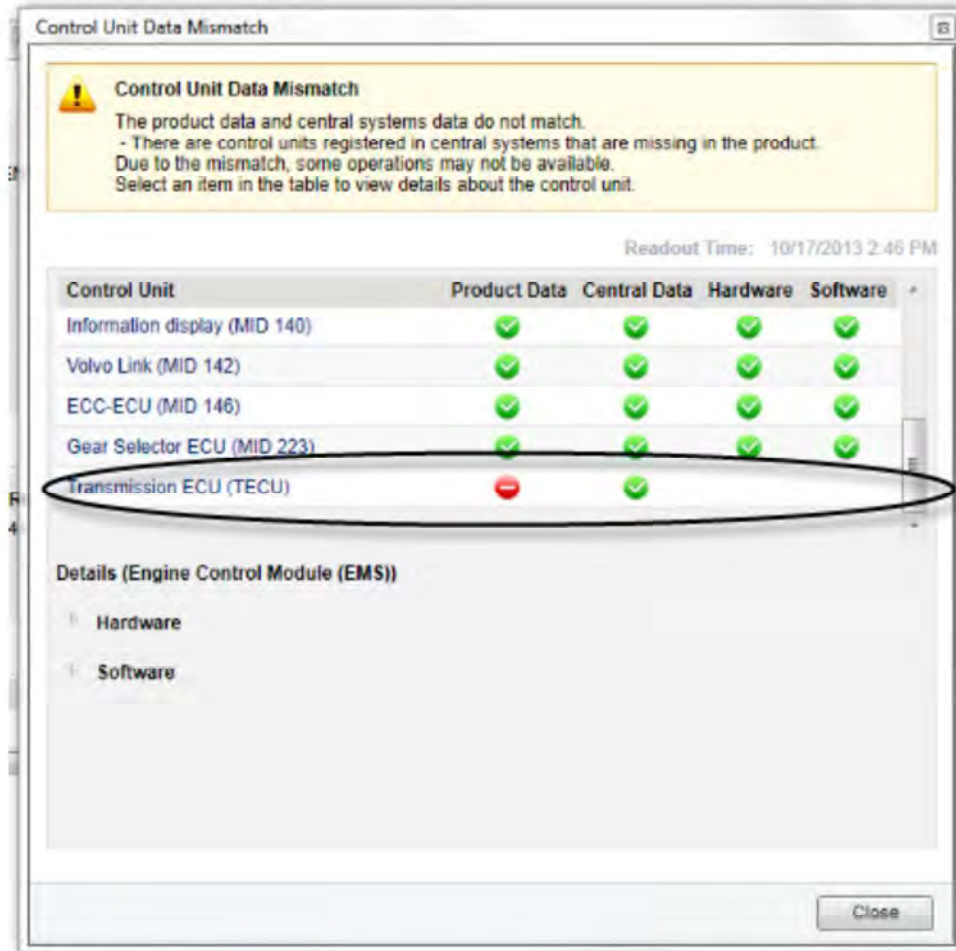
- If the transmission is identified, proceed to Step 5.



W2093626

TECU programmed with the correct software to allow communication or completely blank without software

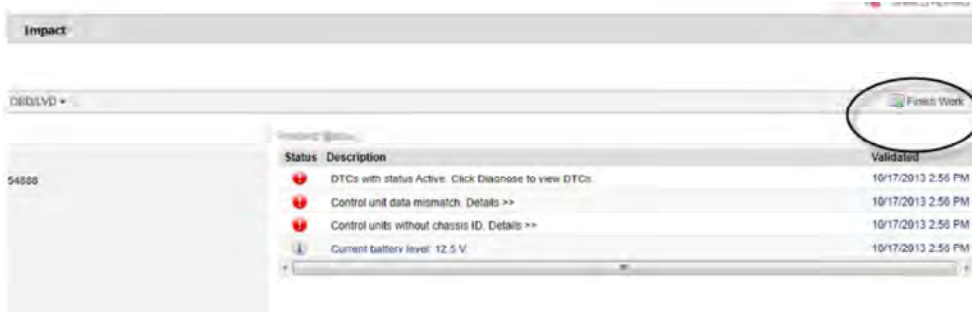
- If the transmission is not identified, proceed to Step 1.



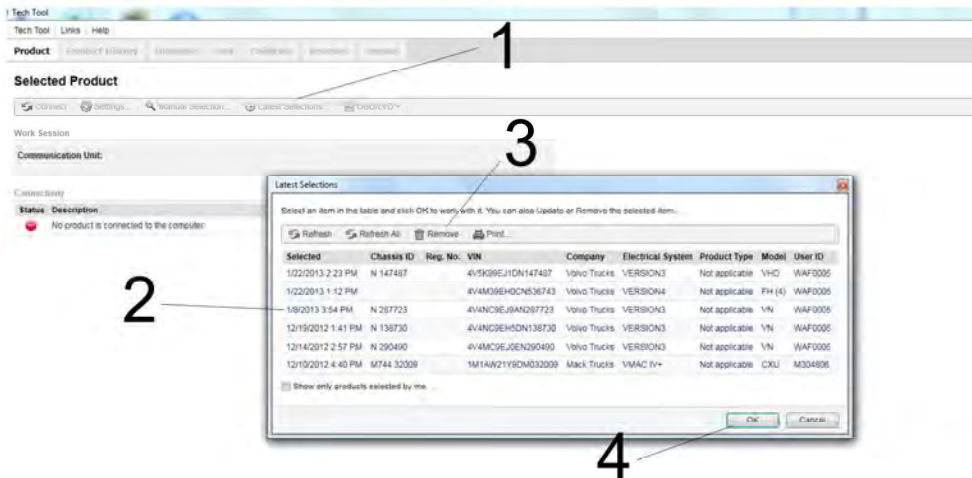
W2093627

TECU programmed with incorrect software, no communication

- 1 Turn ignition OFF, select Finish Work on the product screen and delete the chassis number from PTT.



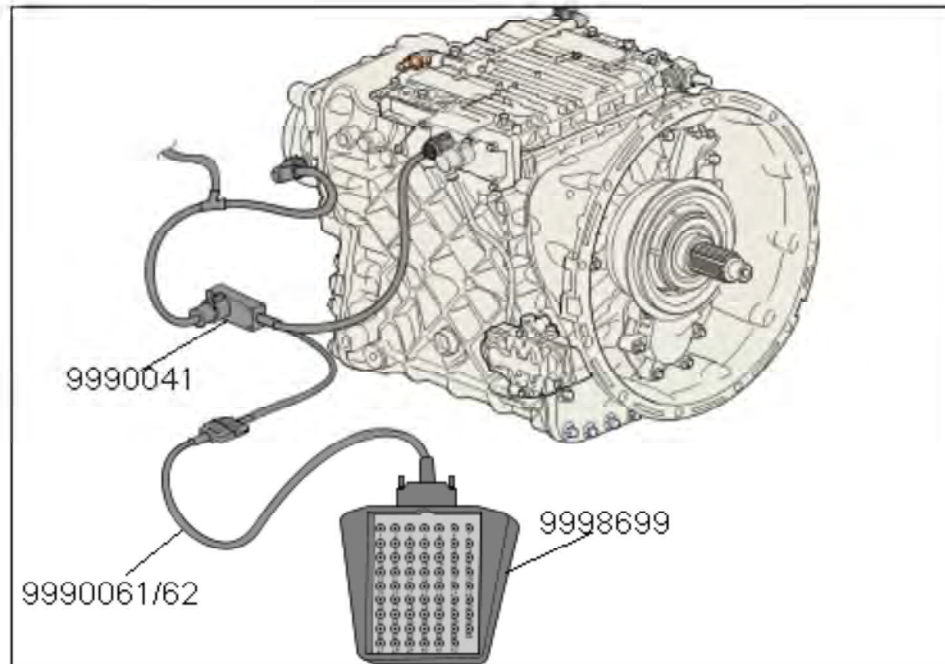
W2093744



W2093745

1	Pick Latest Selections
2	Select the chassis
3	Click Remove
4	Click OK

- 2 Use special tools 9990041 and 9990061/62 to connect breakout box 9998699 to the TECU.



W2093628

- 3 Use a jumper wire to connect Pin 18 (supply +) to Pin 6 (Boot Mode) on breakout box.
- 4 Turn ignition ON and connect PTT. Allow PTT to identify chassis. PTT should indicate that the TECU is now online and does not contain a chassis ID.
- 5 Select 1700-08-03-39 Program Electronic Control Unit in Program menu. Select TECU and Update Electronic Control Unit with latest software.
- 6 Remove jumper wire from breakout box when programming starts.
- 7 After programming is complete, turn ignition OFF for 30 seconds.
- 8 Turn the ignition ON and re-identify/refresh the chassis. The TECU should be in the Control Unit Information screen and correctly programmed.
- 9 Calibrate transmission gearbox and road test vehicle to calibrate inclination sensor.
- 10 Clear diagnostic trouble codes (DTC).

## Reimbursement

<b>This repair may be eligible for reimbursement if a product failure was experienced within time and mileage limits of the applicable Warranty coverage. Reimbursement is obtained via the normal claim handling process.</b>	UCHP Reimbursement	eWarranty Reimbursement
<b>Claim Type (used only when uploading from the Dealer Bus. Sys.)</b>	01	01
<b>Labor Code</b>		
Primary Labor Code	4320-22-09-01 — 0.4 hrs.	3231M-43-80 — 0.4 hrs.
<b>Causal Part</b>	3092515	3092515

Mack Trucks Inc. reserves the right to make any changes in design or to make additions to or upon its products without incurring any obligations to install the same on vehicles previously built.