

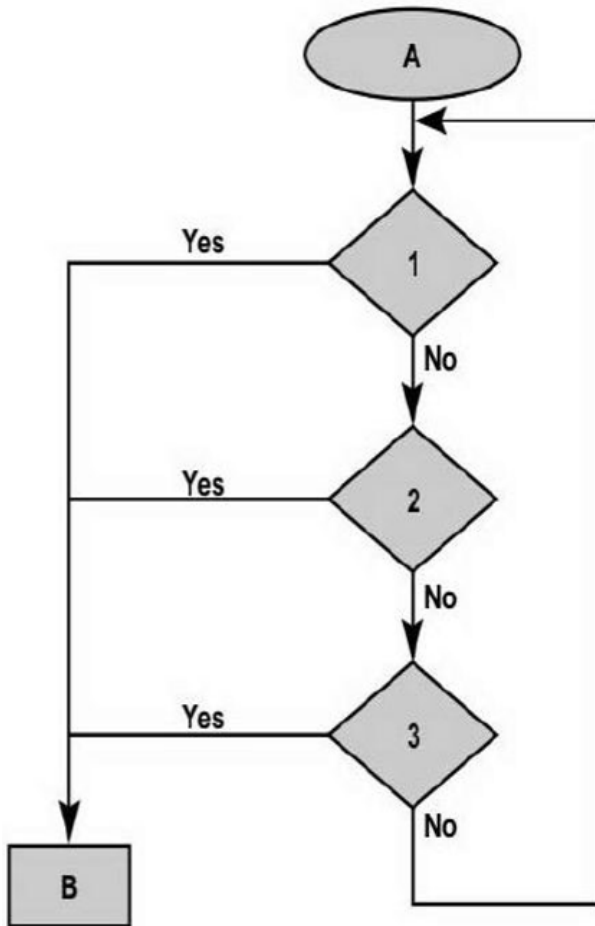


DEF Pump Cycling periodically Hours After Key Off



Finding the DEF pump running periodically hours after key off is a normal operation. Smart Revert was added to prevent urea doser clogging. Reduces occurrences of clogged urea dosage valve. Smart Revert requires EMS and ACM software for functionality. Refer to the illustration below.

NOTE: When performing data link test the smart revert can cause fluctuating data link readings.



| DEF Delayed Draining Function | |
|-------------------------------|--|
| A | Engine Shutdown/Key Off |
| 1 | DEF is at risk of freezing |
| 2 | Battery voltage is below 12.2v |
| 3 | DEF system waiting state exceeds 17 hours (the maximum time delay) |
| B | Initiate DEF draining process |



Tags

[mack](#)

[volvo](#)

[def pump](#)

[erratic datalink readings](#)

Related links and attachments

No links or attachments available



Feedback

[Give feedback](#)

to help improve the content of this article