



# Tech Tips

TT 96-14-05

Date: August 22, 2014

2015-2016 Golf, GTI, **Golf R, Sportwagen** -Immobilizer Key/Key Remote Adaptation Test Plan

**January 15, 2016: Update to model applicability.**

To adapt keys to **a 2015-2016 Golf, GTI, Golf R or Sportwagen (MQB chassis,)** it is necessary to complete the “Adapt Immobilizer” test plan. **Kessy Vehicles:** Verify that the reader coil (figure 1) is removed from the steering column and the key is touching the reader coil during key adaptation. Bladed key vehicle, it is not necessary to remove the reader coil. The test plan can be found under the ODIS Special Functions Tab (figure 2) or by navigating to “Immobilizer functions” under “Elect. Immobilizer 5A” after clicking the “Select self test” button in the Test Plan tab (figure 3). This procedure adapts both the remote and immobilizer functions of the key.

**Note: Vehicle may not start and or have warning lights on cluster after immobilizer / key adaptation is completed. See pg. 5 information in this tech tips after immobilizer / key adaptation for further instructions.**



Figure 1

# Service Information

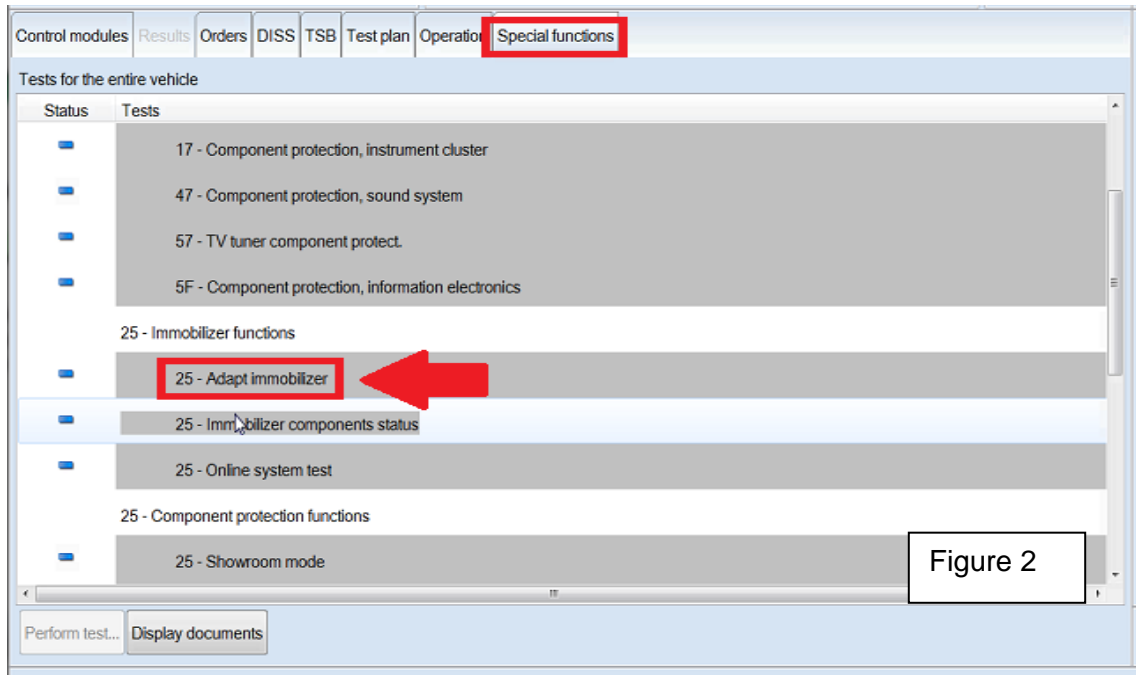


Figure 2

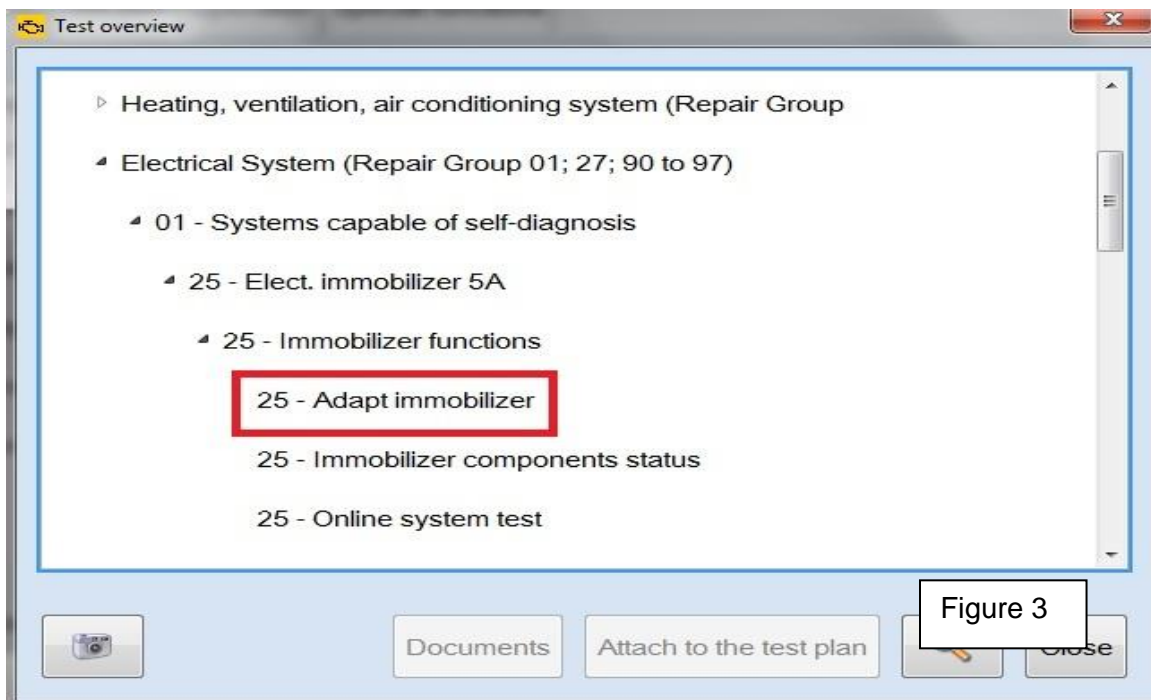


Figure 3

# Service Information

When prompted by the test plan, make the selection to Repair immobilizer, as shown in figure 4.

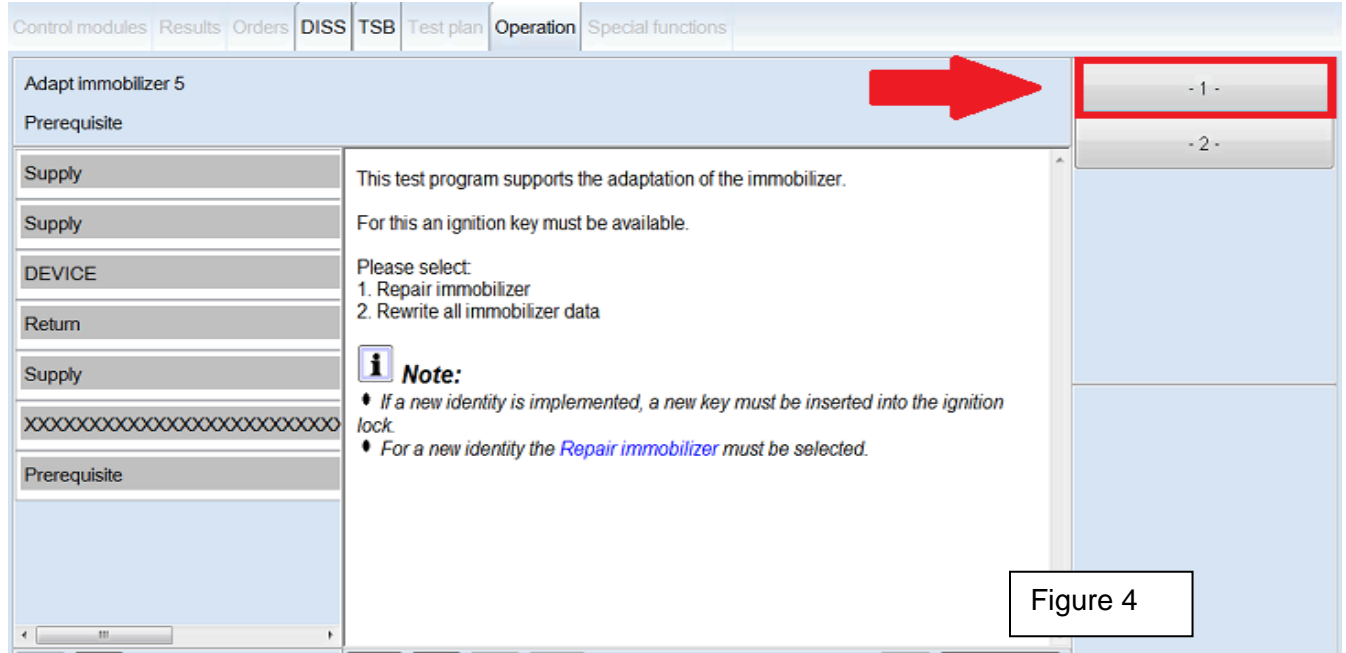


Figure 4

Once the purchaser's information is entered and valid login credentials are provided, the adaptation status of all immobilizer components is displayed (figure 5). Select "Complete/Continue".

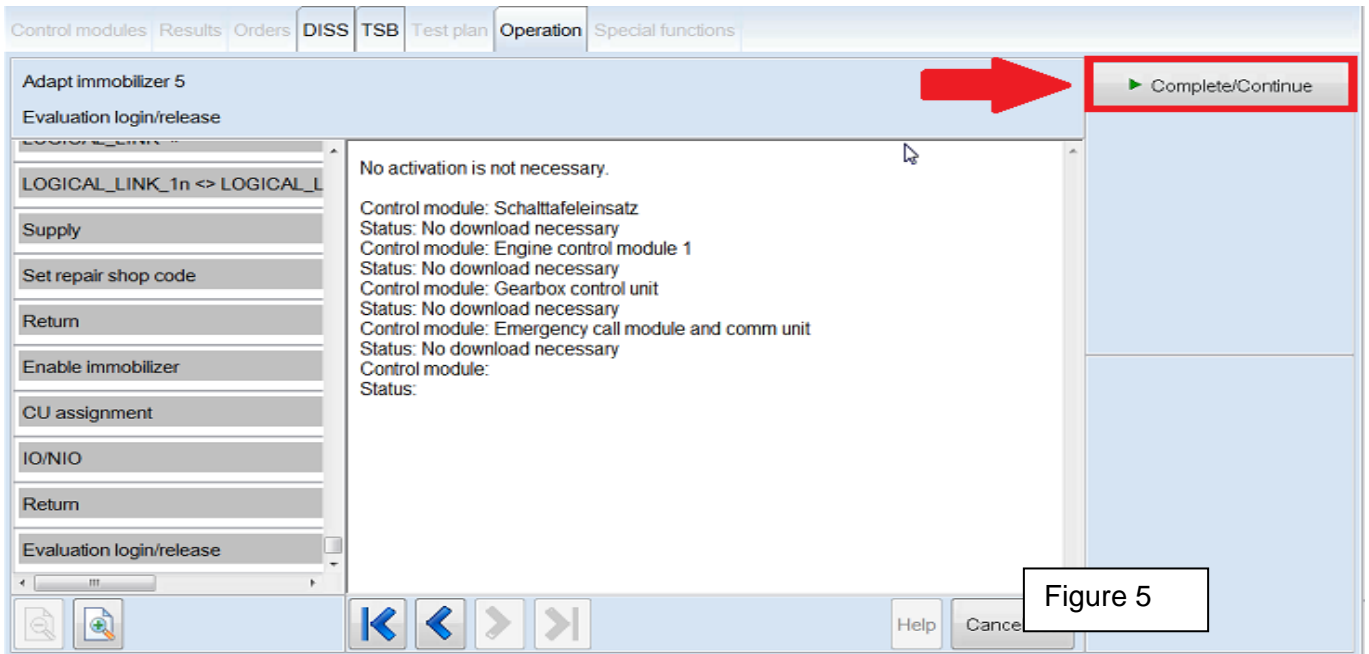
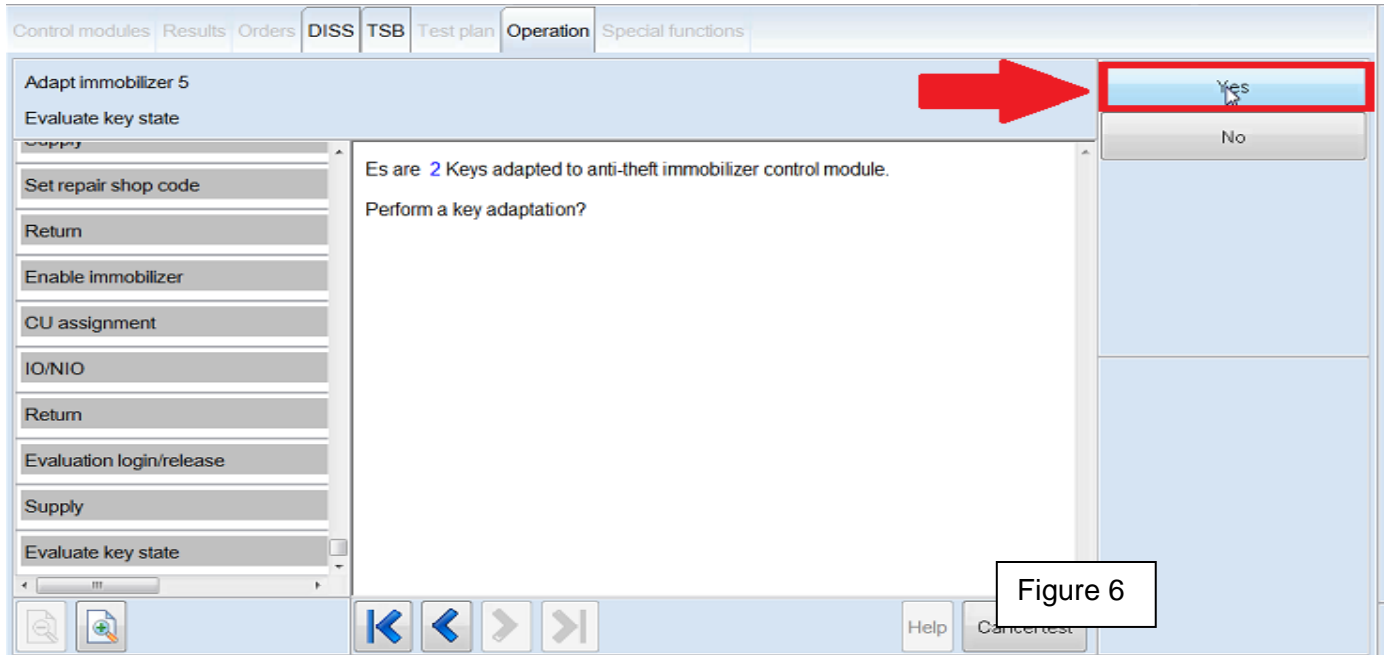


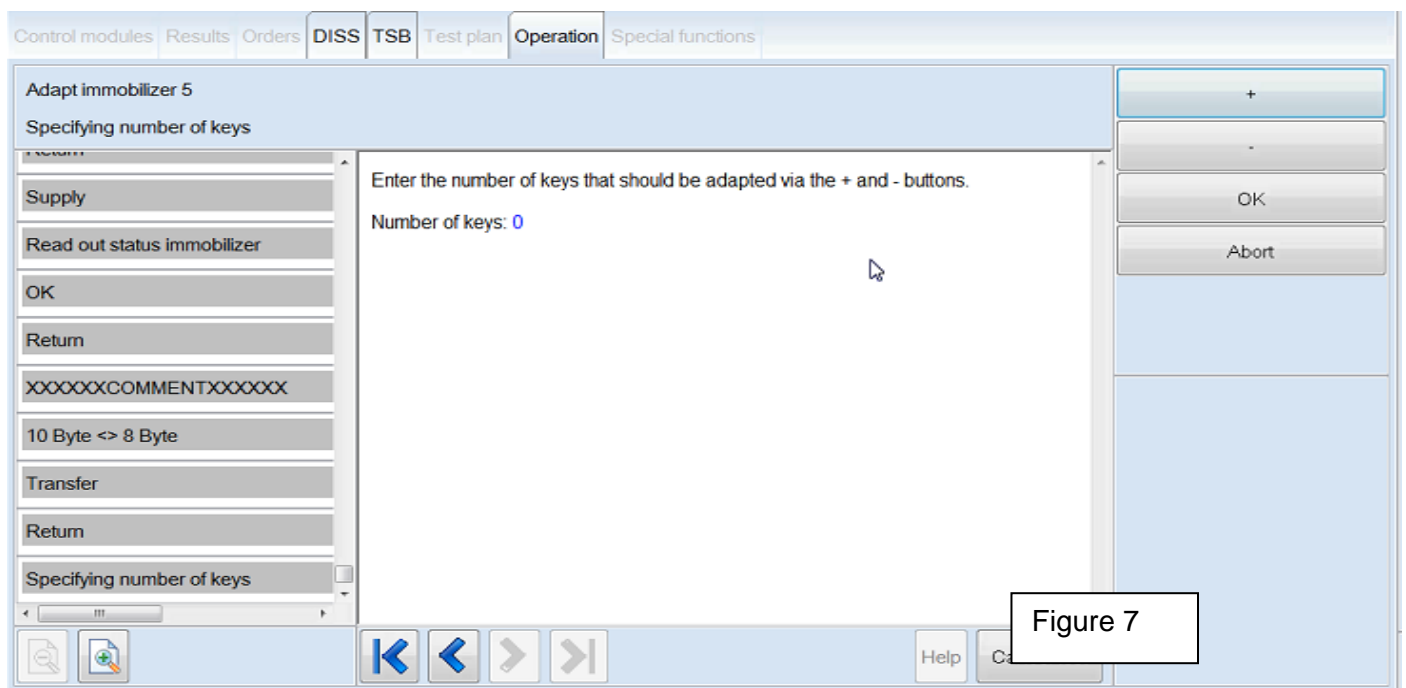
Figure 5

# Service Information

Select “Yes” when prompted to perform key adaptation (figure 6).

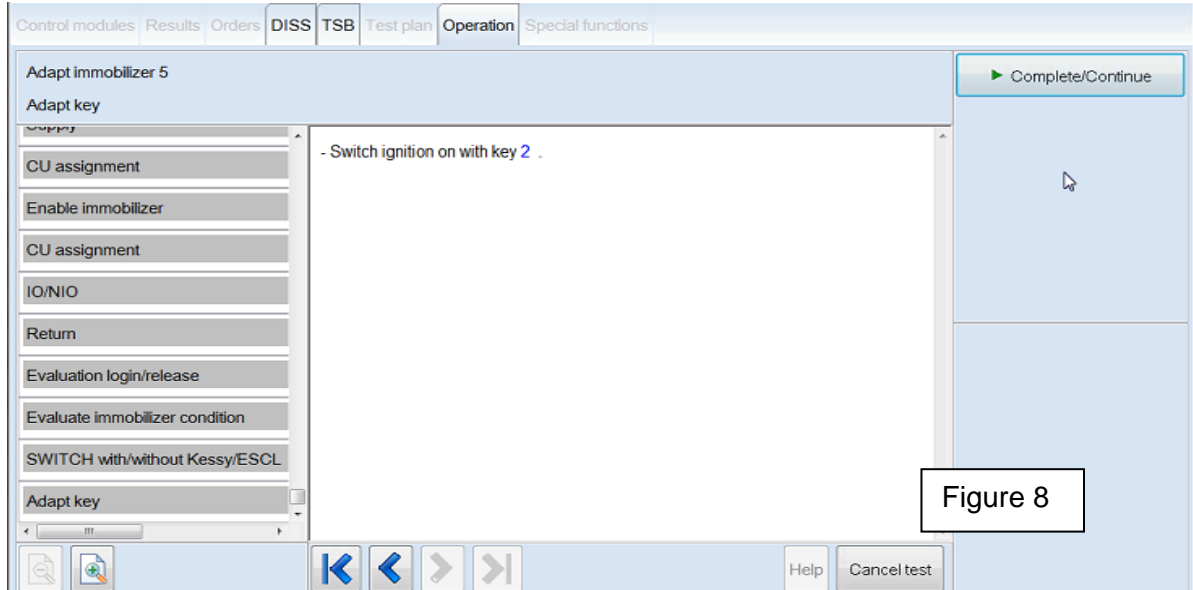


Use the + and – buttons to select the number of keys to be adapted, then select “OK” (figure 7).

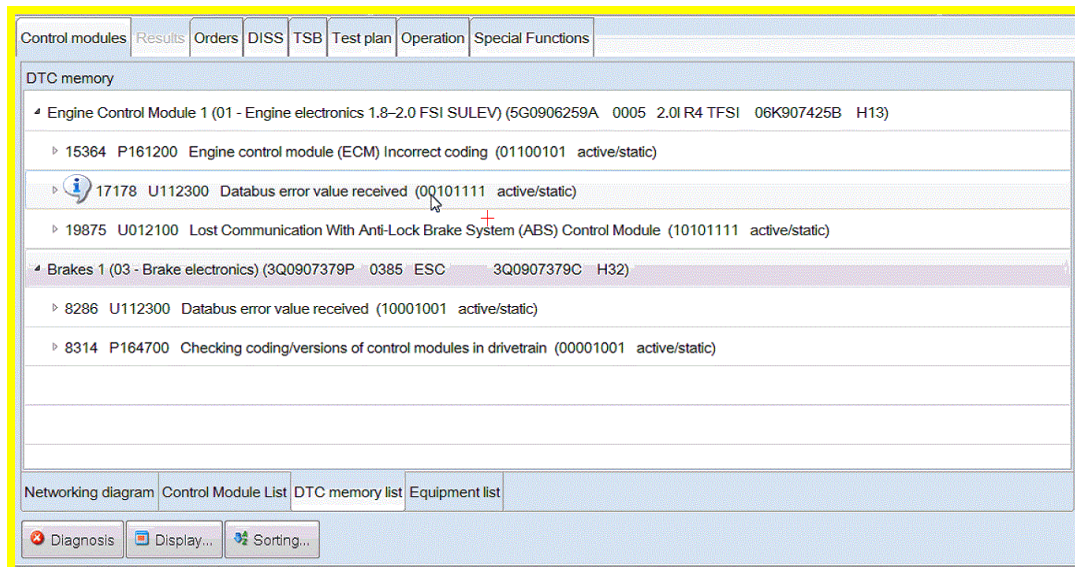


# Service Information

Continue to follow test plan instructions to complete key adaptation (figure 8).

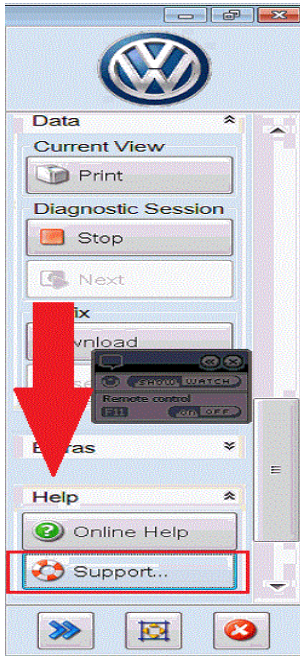


Vehicle doesn't start and or warning lights on after immobilizer / key adaptation. Check for faults related to modules that may no longer be coded.

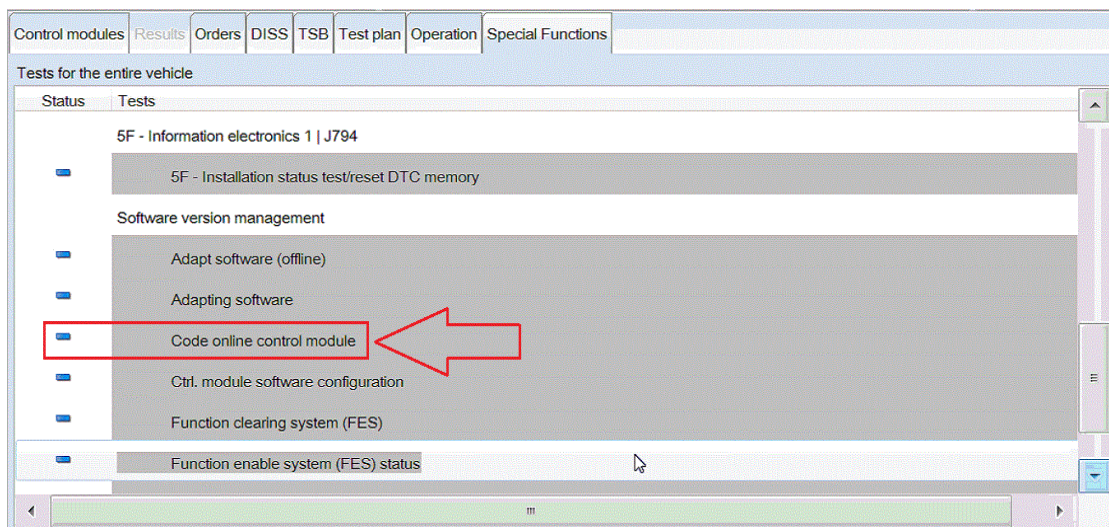


# Service Information

If a control module is no longer coded, the test plan for immobilizer / key adaptation has failed. If the scan tool being used is up to date, please submit feedback for the failed test plan using the Help tab and Support button in the right column of the scan tool.



It will be necessary to recode all modules that are no longer coded. Code modules online under the special functions tab, "Code online control module". Modules may include, but not limited to ECM, ABS, TCM.



Clear all related faults, recheck operation of the vehicle.