



Technical Service Bulletin

57 Front or rear door lock is not locking, w/o function and/or fault messages in DIS, DTC(s) B122D29, B14FF29 or B122B13

57 22 91 2063236/3 June 8, 2022. Supersedes Technical Service Bulletin Group 57 number 21-87 dated December 8, 2021, for reasons listed below.

Model(s)	Year	VIN Range	Vehicle-Specific Equipment
A6, A7, A8, and Q8	2019 – 2023	All	Not Applicable
e-tron quattro	2019 2021 – 2023		
A6 allroad, S6, S7, S8, e-tron Sportback quattro, SQ8, and RS Q8	2020 – 2023		
A8 e quattro	2020 – 2021		
RS 6 Avant, and RS 7	2021 – 2023		
A7 e quattro	2021 – 2022		
e-tron GT, and RS e-tron GT	2022 - 2023		

Condition



Technical Service Bulletin

REVISION HISTORY		
Revision	Date	Purpose
3	-	Revised header (Added model year) Revised <i>Service</i> (Changed wording)
2	12/08/2021	Revise header (Add Models) Revise <i>Condition</i> (Added customer statement) Revise <i>Service</i> (Add tip for MVBs, add QR code, and Audi e-tron GT measurement instructions) Revise <i>Warranty</i> (Add labor operations and service numbers for striker plate adjustment) Revise <i>Additional Information</i> (Add SoST film to resources)
1	07/30/2021	Initial publication

Customer states:

- The front and/or rear doors cannot be opened from the outside or the inside.
- Fault messages for the front and/or rear doors appear in the driver information system (DIS) (e.g. for exit warning, central locking, child safety lock).
- The doors are locked but one of the doors can be opened without a key.
- The front and/or rear doors closing assist is inoperative or intermittently not operating.

Workshop findings:

One or more of the following DTC(s) may be stored in the driver's door control module, J386 (address word 0042), passenger's door control module, J387 (address word 0052), rear driver side door control module, J926 (address word 00BB) or rear passenger side door control module, J927 (address word 00BC):

Driver's door control module, J386 (address word 0042):



Technical Service Bulletin

- **DTC B122D29** (Lock unit for central locking Implausible signal).
- **DTC B122B13** (Central locking motors Open circuit).

Passenger's door control module, J387 (address word 0052):

- **DTC B122D29** (Lock unit for central locking Implausible signal).
- **DTC B122B13** (Central locking motors Open circuit).

Rear driver side door control module, J926 (address word 00BB):

- **DTC B122D29** (Lock unit for central locking Implausible signal).
- **DTC B14FF29** (Child safety lock motor Implausible signal).
- **DTC B122B13** (Central locking motors Open circuit).

Rear passenger side door control module, J927 (address word 00BC):

- **DTC B122D29** (Lock unit for central locking Implausible signal).
- **DTC B14FF29** (Child safety lock motor Implausible signal).
- **DTC B122B13** (Central locking motors Open circuit).

Technical Background

The Audi A8 (D5) is equipped with fully electric door locks (aka “e-lock”). The micro switches are located at the inner and outer door handles. The Audi A6/A7 (C8), Q8, and Audi e-tron models are equipped with semi-electric door locks. The micro switches are integrated into the door locks and are not located at the door handles.

The main difference between fully and semi-electric door locks is the location of the micro switches.

The request to open the door from the inner or outer door handle is transmitted electrically from the respective micro switch to the door control module. The door control module triggers an electric motor within the door lock, which releases the rotary latch, opening the lock. The door can be opened with very little effort.



Technical Service Bulletin

In addition, two Bowden cables are used to provide a mechanical connection between the door lock and the inner/outer door handles. To open the door mechanically from the inside (in the event of an electrical malfunction), the inner door handle must be pulled twice past the normal angle of operation. Opening the door mechanically from the outside handle is only possible after the door lock cylinder or the inner door handle were operated.

Production Solution

Not Applicable.

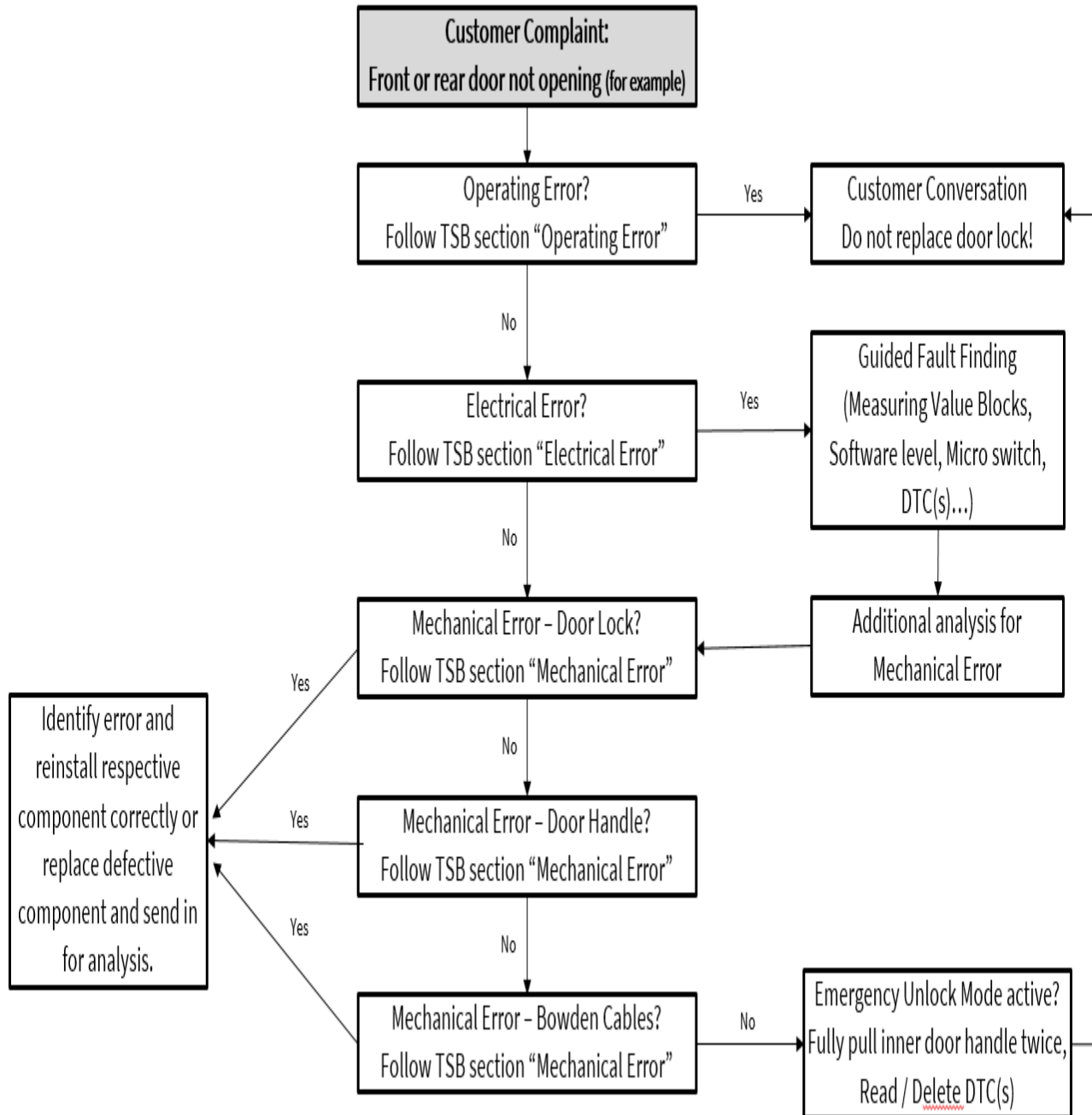
Service



Tip: For customer concerns described in this TSB, **do not replace** the door lock immediately! Follow the diagnostic tree starting at the top to determine the root cause (Figure 1).



Technical Service Bulletin





Technical Service Bulletin

Figure 1. Follow the diagnostic tree starting at the top.

Operating Error:

1. Determine if the concern is caused by incorrect operation.
2. Explain the functions of the electric door lock to the customer with reference to the Owner's Manual:
The following questions are helpful to determine if an incorrect operation is causing the concern:
 - Does the concern occur when the ignition is on or off (did the bus go to sleep when opening the door)?
 - Is the inner door handle pulled too quickly or pulled all the way to the stop?
 - Does the door open if you pull the inner door handle twice? Afterward, can you open the door with the outer door handle?
 - How does the vehicle behave compared to a similar vehicle?
3. The corresponding information in the Owner's Manual, Repair Manual, in Guided Fault Finding, and in TSB(s) should also be considered.
4. For further information, please review the information video regarding door handle operation at <https://audi-external.kzoplatform.com/player/medium/2084964271170524781>.



Figure 2. QR code for viewing the supporting video with a QR code reader on phones and tablets.



Technical Service Bulletin

Alternatively, the video can be accessed through computer internet browsers at the link provided in this bulletin.

Electrical Error

A6, A7, A8, and Q8:

1. Follow TSB 2055932: *57 Central locking/parking brake warning, alarm or exterior mirror issues, DTCs B122D29, B14FF29 or U122800 stored* to ensure that the door control modules are at the latest software level and update them if necessary or applicable.

Audi e-tron quattro and Audi e-tron sportback quattro:

1. Follow TSB 2055933: *57 Exit warning message with various central locking & alarm issues, DTCs B122D29, U122800, and/or B14FF29 stored* to ensure that the door control modules are at the latest software level and update them if necessary or applicable.

All models:

2. Interrogate the door control module fault memory of any affected door(s).
3. Delete fault memory if any of the DTC(s) are stored. Perform ignition cycle. Open and close the affected door(s).
4. Re-check the fault memory of affected door control module(s).
5. If the DTC(s) do not return and the door(s) can be opened/closed as designed the door lock is electrically OK. Follow the section “Mechanical Error” in this TSB and continue to observe for new DTC entries.
6. If the DTC(s) cannot be deleted or return, observe the following measuring value blocks for plausible conditions while opening/closing the door(s):



Technical Service Bulletin

Measured Value Name	Da0042	Da0052	Da00BB	Da00BC
Door Status (Open/Closed, Locked/Unlocked, Emergency Unlock Mode)	IDE0572 0	IDE0572 7	IDE0572 2	IDE0572 9
Central Locking Button	IDE04213			
Rotary Latch Status	IDE02589			
Status Door Lock	MAS06256			
Switch For Inside Door Handle	MAS02099			
Switch For Outside Door Handle	MAS02100			



Tip: After pulling the inside or outside door handle, the electric motor in the door lock starts to release the rotary latch. Until the rotary latch has been completely released, the value of “Status Door Lock”/ID MAS06256 is temporarily “implausible.”

7. If any of the measuring value blocks are implausible, measure the resistance directly using the multimeter function of the VAS tester:

A6, A7, Q8, Audi e-tron quattro, Audi e-tron quattro sportback quattro, and Audi e-tron GT (models with semi-electric door lock):

- At PIN #2 and PIN #4 of the door lock (ohms reading of emergency unlock switch, inner and outer door handle switches connected in parallel).

A8 (models with electric door lock):

- At PIN #2 and PIN #4 of the door lock (ohms reading of emergency unlock switch).
- At inner and outer door handles (ohms reading of inner or outer door handle switches).

8. Compare readings with the specifications in the table below:



Technical Service Bulletin

Component Active/Operated	Resistance in ohms
Emergency unlock switch	1000
Inner door handle switch	620
Outer door handle switch	270
Emergency unlock switch & inner door handle switch (semi-electric lock)	382
Emergency unlock switch & outer door handle switch (semi-electric lock)	212
Emergency unlock switch & inner door handle switch & outer door handle switch (semi-electric lock)	158

- Readings of **1,000, 382, 212, and 158 ohms** indicate that the emergency unlock function is active and that the door lock can only be released mechanically. In this case, pull the inner door handle twice to its stop. Then close the door, open it again and repeat the measurement. It should now read **OL** (overload) if the inner and/or outer door handles are not operated.
- If the measurements are according to specifications, do not replace the door lock as it is not the root cause of the customer's concern.
- Visually and electrically check the PINs at the door lock and the door control module and the connecting wiring.
- Check the wiring and connections at the door coupling points at the A-pillar and B-pillar.

Mechanical Error:

- Inspect the Bowden cables, especially the connections at the door lock and the inner and outer door handles for any issues (twisting, loose connection, routing, damage, traces of water/ice, stiffness, etc.).



Technical Service Bulletin

2. Replace any defective components as necessary.
3. Check if the outer door handles return flush to the zero/rest position.
4. If they do not, follow TSB 2060196: *57 Exterior door handles do not return to the zero position* to modify the outer door handles as necessary.
5. Check if the doors open/close freely and latch/unlatch smoothly.
6. Adjust the striker plate, door alignment, and/or door hinges as necessary.



Tip: Parts replacement, without following this TSB, does not resolve this issue. Claims for replaced parts will be subject to review.

Warranty

Claim Type:	<ul style="list-style-type: none">• 110 up to 48 Months/50,000 Miles.• G10 for CPO Covered Vehicles – Verify Owner.• If the vehicle is outside any warranty, this Technical Service Bulletin is informational only.
Service Number:	<ul style="list-style-type: none">• 5717 Door lock front.• 5719 Cable front.• 5725 Striker plate front.• 5817 Door lock rear.• 5819 Cable rear.• 5825 Striker plate rear.• 9732 Door wiring harness.



Technical Service Bulletin

Damage Code:	<ul style="list-style-type: none">• 0010 Or <ul style="list-style-type: none">• 0040		
Labor Operations:	Door lock front remove + reinstall	5717 195X	See SRT with associated operations
	Door lock rear remove + reinstall	5817 195X	See SRT with associated operations
	Cable front remove + reinstall	5719 19XX	See SRT with associated operations
	Cable rear remove + reinstall	5819 19XX	See SRT with associated operations
	Door wiring harness front or rear remove + reinstall	9732 XXXX	See SRT with associated operations
	Striker plate front adjust	5725 XXXX	See SRT with associated operations
	Striker plate rear adjust	5825 XXXX	See SRT with associated operations



Technical Service Bulletin

Diagnostic Time:	GFF	0150 0000	Time stated on the diagnostic protocol (Max 30 TU)
	Road test prior to the service procedure	No allowance	0 TU
	Road test after the service procedure	No allowance	0 TU
Claim Comment:	As per TSB 2063236/3		

All warranty claims submitted for payment must be in accordance with the *Audi Warranty Policies and Procedures Manual*. Claims are subject to review or audit by Audi Warranty.

Required Parts and Tools

Tool Number	Tool Description
VAS 6160/VAS 6150	VAS tester with the current version of ODIS (Windows 10)
VAG1594D	Auxiliary Measuring Set
VAS 1978/35-22	Tool for primary locking
VAS 1978/35-2	Tool for secondary locking

Additional Information

More information on this system can be found in the following resources:

- QR Code video: SoST_0008: Operating the door handle.
- Owner's Manual: Chapter "Opening and closing".



Technical Service Bulletin

- SSP 970293: The 2019 A8 Electrical and Electronic Systems.
- SSP 990493: The 2019 A8 Introduction.
- SSP 990393: The 2019 A8 Driver Assistance Systems.

The following Technical Service Bulletin(s) will be necessary to complete this procedure:

- TSB 2039206, *00 How to watch TSB videos.*
- TSB 2055932, *57 Central locking/parking brake warning, alarm or exterior mirror issues, DTCs B122D29, B14FF29 or U122800 stored.*
- TSB 2055933, *57 Exit warning message with various central locking & alarm issues, DTCs B122D29, U122800, and/or B14FF29 stored.*
- TSB 2060196, *57 Exterior door handles do not return to the zero position.*
- TSB 2011732, *00 Software Version Management (SVM), operating instructions.*

All part and service references provided in this TSB (**2063236**) are subject to change and/or removal. Always check with your Parts Department and/or ETKA for the latest information and parts bulletins. Please check the Repair Manual for fasteners, bolts, nuts, and screws that require replacement during the repair.

©2022 Audi of America, Inc. All rights reserved. The information contained in this document is based on the latest information available at the time of printing and is subject to the copyright and other intellectual property rights of Audi of America, Inc., its affiliated companies, and its licensors. All rights are reserved to make changes at any time without notice. No part of this document may be reproduced, stored in a retrieval system, or transmitted in any form or by any means, electronic, mechanical, photocopying, recording, or otherwise, nor may these materials be modified or reposted to other sites, without the prior expressed written permission of the publisher.