

PREVOST

Instruction Sheet

IS-21072A

STEERING GATEWAY

Revision A

Cancel watch dog removal from EFD part of the instruction

06-29-2022

USE SECTION 1 OF THE INSTRUCTION

Model	VIN (Electric Fan Drive Vehicles)
H345 Coaches. Model Year : 2019+	2PCH33493KC710185 and up.
H345 VIP. Model Year : 2019+	2PCV33496KC710295 and up.
X-Series Vehicles. Model Year : 2017+	Canada built vehicles: 2PCCS349XHC736160 and up.
	US built vehicles : 4RKG33491H9737417 and up.

USE SECTION 2 OF THE INSTRUCTION

Model	VIN (Without Electric Fan Drive Vehicles)
H345 Coaches. Model Year : 2019-	Before 2PCH33493KC710185.
H345 VIP. Model Year : 2019-	Before 2PCV33496KC710295.
X-Series Vehicles. Model Year : 2017-	Canada built vehicles: Before 2PCCS349XHC736160.
	US built vehicles : Before 4RKG33491H9737417.

MATERIAL

Kit #IS21072 includes the following parts:

Part No.	Description	Qty
564502	SOCKET MINI MATE N LOCK PRE-TIN	2
561479	TERM MOLEX .062 PIN 24-18AWG	1
560587	TERM,RING,ST,16-14,1/4,INS	1
562935	BUTT-SPLICE,22-18,INS	1
560784	SHRINK .250po .125po BLK -55C, +135C D/W	1 ft
562587	WIRE, 18 AWG, TXL, BLK, 125 DEG	6 ft
IS-21072	INSTRUCTION SHEET (EN)	1
FI-21072	INSTRUCTION SHEET (FR)	1

Other parts that may be required:

Part No.	Description	Qty
681485	EXTRACTOR, 11-03-002	1
564099	CLOTH TAPE, PROTECT. 150°C - BLACK	As req.

NOTE

Material can be obtained through regular channels.

PROCEDURE



DANGER

Park vehicle safely, apply parking brake, stop engine. Prior to working on the vehicle, set the ignition switch to the OFF position and trip the main circuit breakers equipped with a trip button. On Commuter type vehicles, set the battery master switch (master cut-out) to the OFF position.

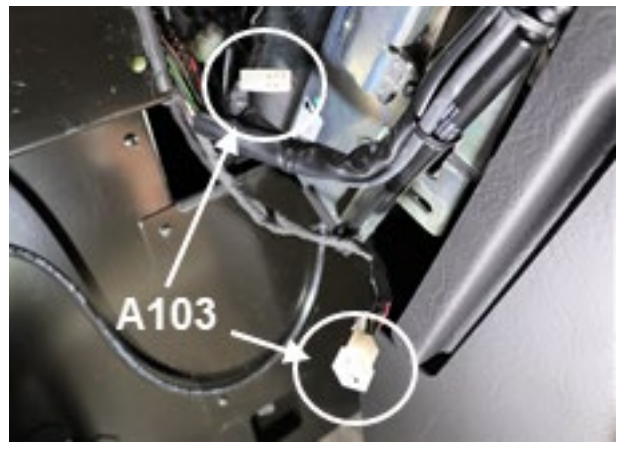
Lock out & Tag out (LOTO) must be performed during set-up, maintenance or repair activities. Refer to your local procedure for detailed information regarding the control of hazardous energy.

SECTION 1 (EFD VEHICLES)

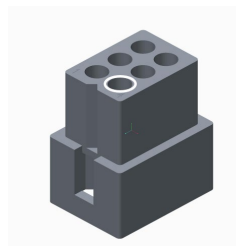
1. Prepare the 2 lengths of 18AWG wires required for this modification.
 - Cut **36"** of the supplied **562587 black** wire and crimp a **564502** terminal at one end and a **561479** terminal at the other end.
 - Take **30"** of the remaining **562587 black** wire and crimp a **564502** terminal at one end and a **560587** ring terminal at the other end.



2. Under the dash, locate the A103 connector (left side of the steering column). Disconnect A103.



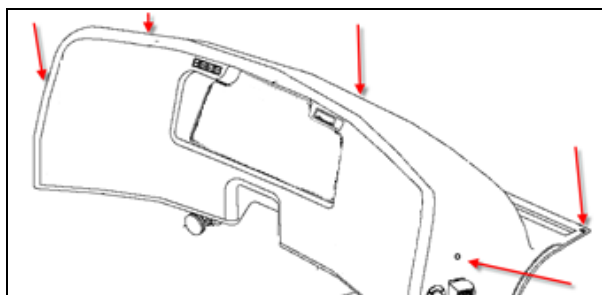
3. Using extractor tool **681485**, remove the ground wire A55RJ1 located at PIN 4 of the A103 connector.



4. Cut the terminal and cover the end of the wire with a length of the supplied **560784** shrink tubing.



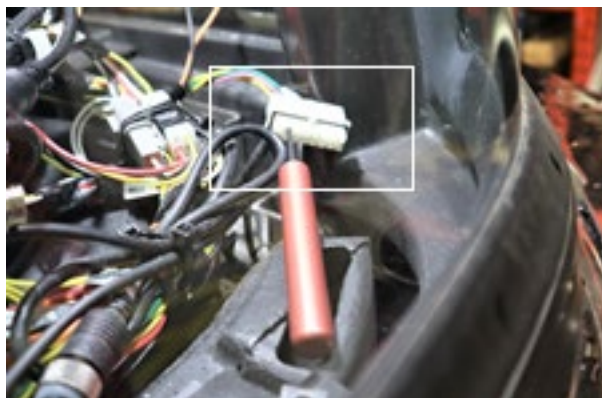
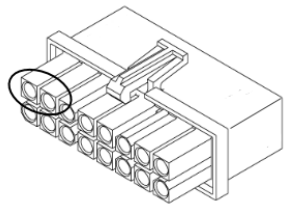
5. Remove the vehicle dashboard cover.



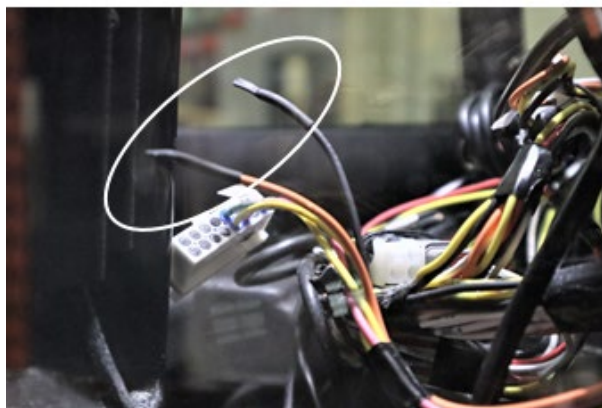
6. Locate the Gateway module located on the left side of the dashboard (close to the side window). Disconnect the module (A139 connector).



7. Using extractor tool **681485**, remove the terminals located at PIN 1 (A55J2.15 wire) and PIN 2 (A55RJ1.18 wire) from the A139 module connector.

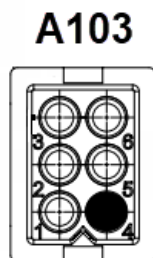
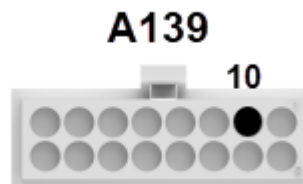


8. Cut the terminals from the end of the two extracted wires and add a length of supplied shrink tubing to protect the ends.

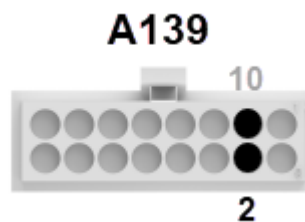


9. Route the previously prepared 36" black wire from connector A139 to connector A103 (pass through the dash near the steering column).

10. Insert one end of the 36" black wire in connector A139 PIN 10 and the other end of the wire in A103 PIN 4.



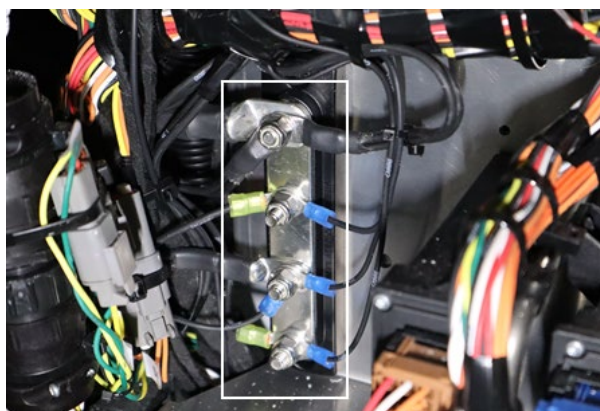
11. Connect the previously prepared 30" black wire to connector A139 PIN 2.



12. Route the other end of the 30" wire (ring terminal) inside the vehicle front junction box (FJB).



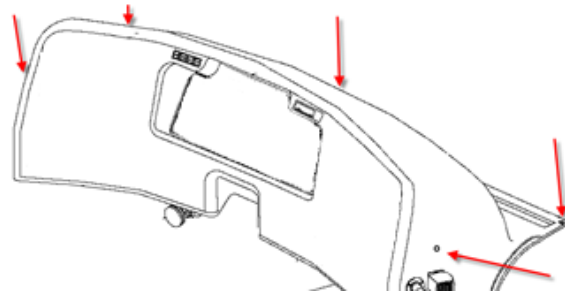
13. Connect the ring terminal of the wire to one of the front junction box ground studs.



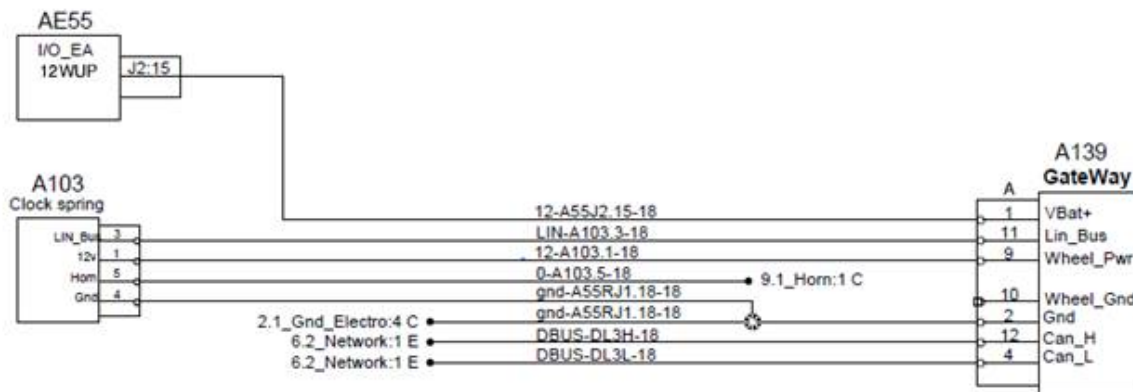
14. Reconnect A139 and A103 connectors and power-on the vehicle to confirm that all the steering wheel buttons are working properly.



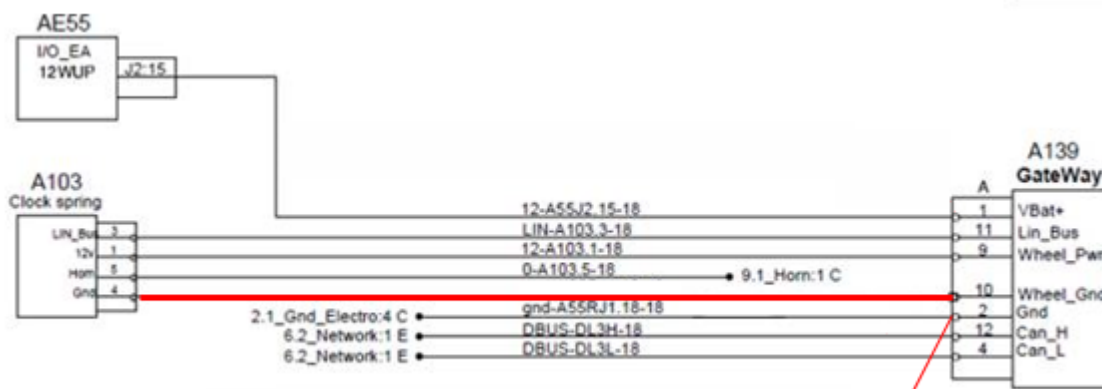
15. Secure all loose wires under the dashboard, front junction box and under the steering wheel.
Put back the dashboard cover to finish the installation.



Wiring diagram with EFD (before modification)



Wiring diagram with EFD (after modification)



Direct to FJB Electronic ground stud

SECTION 2 (VEHICLES WITHOUT EFD)

16. Prepare a length of 18AWG black wire required for this modification.

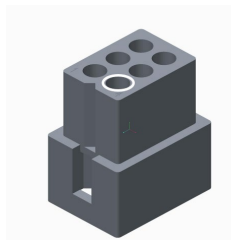
- Cut **36"** of the supplied **562587 black** wire and crimp a **564502** terminal at one end and a **561479** terminal at the other end.



17. Under the dash, locate the A103 connector (left side of the steering column). Disconnect A103.



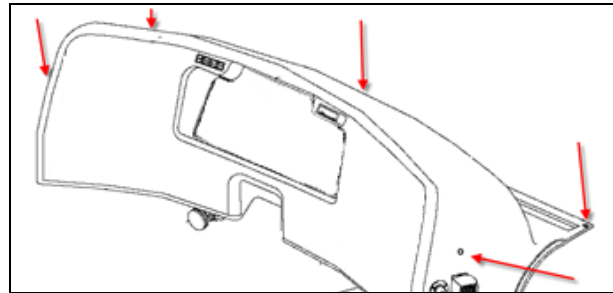
18. Using extractor tool **681485**, remove the ground wire **00A** located at PIN 4 of the A103 connector.



19. Cut the terminal and cover the end of the wire with a length of the supplied **560784** shrink tubing.



20. Remove the vehicle dashboard cover.

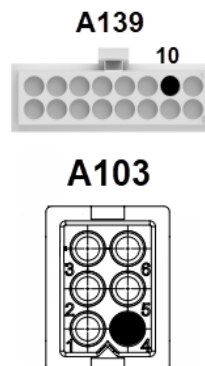



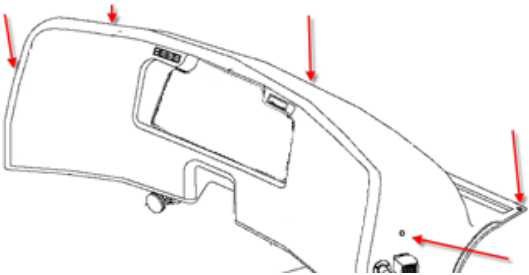
21. Locate the Gateway module located on the left side of the dashboard (close to the side window). Disconnect the module (A139 connector).



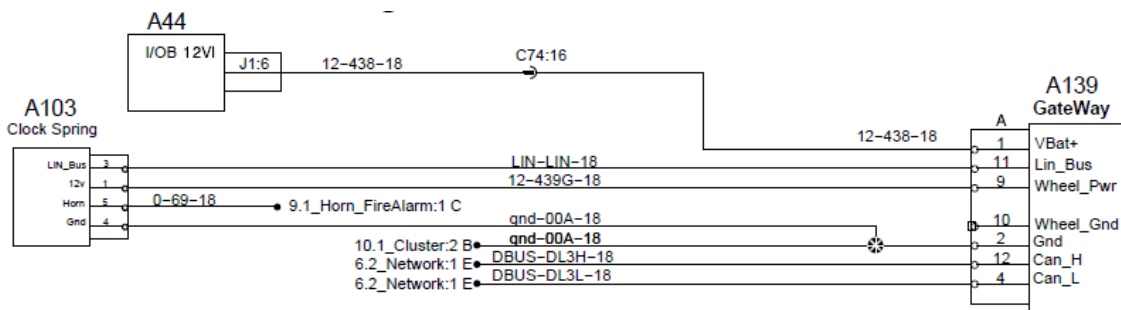
22. Route the previously prepared 36" black wire from connector A139 to connector A103 (pass through the dash near the steering column).

23. Insert the end of the 36" black wire in connector A139 PIN 10 and the other end of the wire in A103 PIN 4.

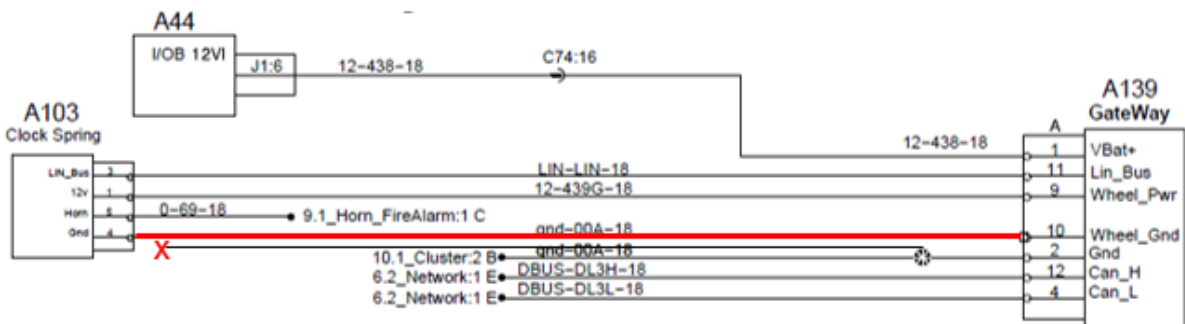


- | | |
|---|--|
| <p>24. Reconnect <u>A139</u> and <u>A103</u> connectors and power-on the vehicle to confirm that all the steering wheel buttons are working properly.</p> |  |
| <p>25. Secure all loose wires under the dashboard and under the steering wheel. Put back the dashboard cover to finish the installation.</p> |  |

Wiring diagram without EFD (before modification)



Wiring diagram without EFD (after modification)



PARTS / WASTE DISPOSAL

Discard waste according to applicable environmental regulations (Municipal/State[Prov.]/ Federal)