



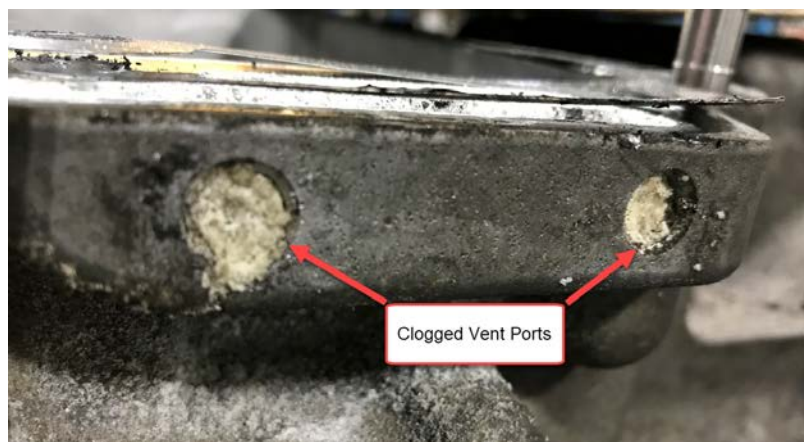
Vehicles Equipped With An Automated Manual Transmission Model D or F (AMT-D, AMT-F) - Transmission Oil Leakage From Transmission Input Shaft Seal Or Output Shaft Seal - US10 And Newer Emissions, Common Model Years 2010 And Newer



> Internal Content

When diagnosing and repairing a shaft seal leak:

1. Check the vent ports on the upper left side of the the main gearbox housing for any sort of blockage or obstruction.



2. Clean out any debris that is observed during the inspection.

3. Check the transmission oil level in the gearbox.

- **If the lube level is excessively low:** Proceed to the next section.

- **If the lube level is at an acceptable but low level:** Fill the transmission oil to the correct level and check operation.

For excessively low transmission oil levels, or customer report of noise from the transmission:

1. The transmission will need to be inspected for internal damage. Removal may be required for proper inspection.



Tags

[k54292421](#)

[mack](#)

[volvo](#)

Related links and attachments

No links or attachments available



Feedback

[Give feedback](#)

to help improve the content of this article