

Parts Information

D611

13

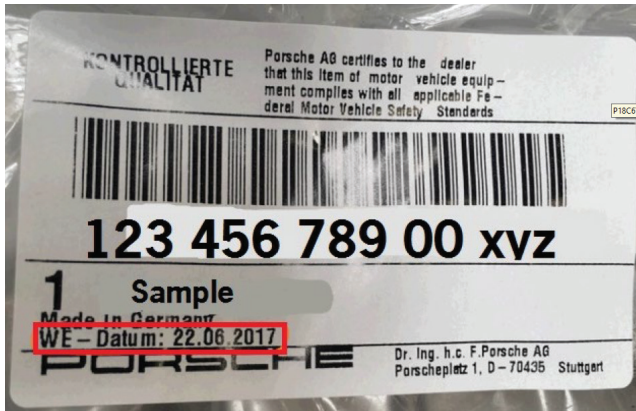
Parts Withdrawal - Pressure Sender (PAB906051C)

Replaces all previous bulletin bearing this number.

Attention: Porsche Parts Managers/Parts Personnel

Porsche Cars North America requests return of the following part(s) to PCNA if in stock at your dealership:

Part Number	Description	Instructions
PAB906051C	Pressure Sender	All parts with WE-Date 15.03.22



To avoid restocking charges and receive full credit, follow these steps:

- Please enter a return in PPL by Tuesday, July 26th, 2022.
- Please use GR13D611 as a purchase order number.
- Parts returned to PCNA without a return delivery note will be sent back to the dealer at dealer's expense.
- Return requests received after the specified return date **will not be processed** and the parts will not be accepted for return. Parts will be coded non-returnable from that date on.
- These parts must be physically returned by close of business day on Tuesday, August 2nd, 2022, to your facing PDC.

Thank you for your cooperation in this matter.

Porsche Cars North America