



MASERATI
EXCELLENCE THROUGH PASSION

Circular Letter MAS001319

September 6, 2017

SUBJECT: Changes in Technical Documentation





Dear Dealer Network,

Maserati is pleased to inform you that, in view of continuously improving the quality of the online technical documentation (TechInt and TechDoc), the following improvements have been made.

General Warnings

The first screen, after vehicle selection, will include the following general warnings:

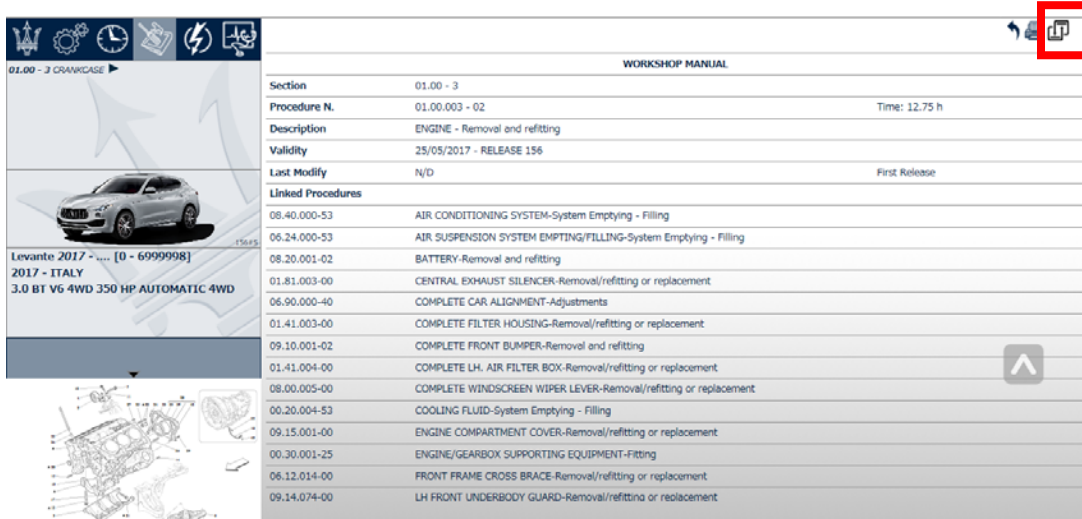
- WARNING: OPERATIONS OTHER THAN THE REPAIR OF THE ELECTRICAL CONNECTIONS FOR WHICH DOCUMENTATION IS PROVIDED BY MASERATI ARE NOT ALLOWED. IN PARTICULAR, IT IS FORBIDDEN TO REPAIR DAMAGED CABLES FALLING OUTSIDE OF WHAT IS EXPRESSLY INDICATED BY MASERATI.
- ANY IMPROPER FORWARDING, REPRODUCTION, OR USE OF THE DOCUMENTATION IS STRICTLY FORBIDDEN, EXCEPT FOR THE EXCLUSIVE USE OF THE DEALER OR RIGHTFUL OWNER, UNLESS EXPRESSLY GRANTED BY MASERATI. EXCEPTIONS ARE THE SCHEDULED MAINTENANCE PLANS, THE LABOR TIMES, AND THE VEHICLE DATA.
- IN CASE OF PRINT, THE VALIDITY OF THE PRINTED DOCUMENT WILL LAPSE THE FOLLOWING DAY DUE TO POSSIBLE UPDATES THAT ARE CONSTANTLY MADE TO THE DOCUMENTATION.
- ALWAYS PAY ATTENTION TO THE SAFETY NOTES, DESCRIBED BELOW:

Notes	Failure to comply with the recommendations indicated by the symbol shown on the right could cause damage to the vehicle	
Caution	Failure to comply with the recommendations indicated by the symbol shown on the right could cause injuries	
Attention	Failure to comply with the recommendations indicated by the symbol shown on the right could cause injuries	
Danger	Failure to comply with the recommendations indicated by the symbol shown on the right could cause severe injuries	

Unit of Measurement Converter

A measurement converter has been added to assist with any necessary conversion of data shown in the technical documentation.

Inside all procedures, the icon highlighted by the red square will appear at the top right:



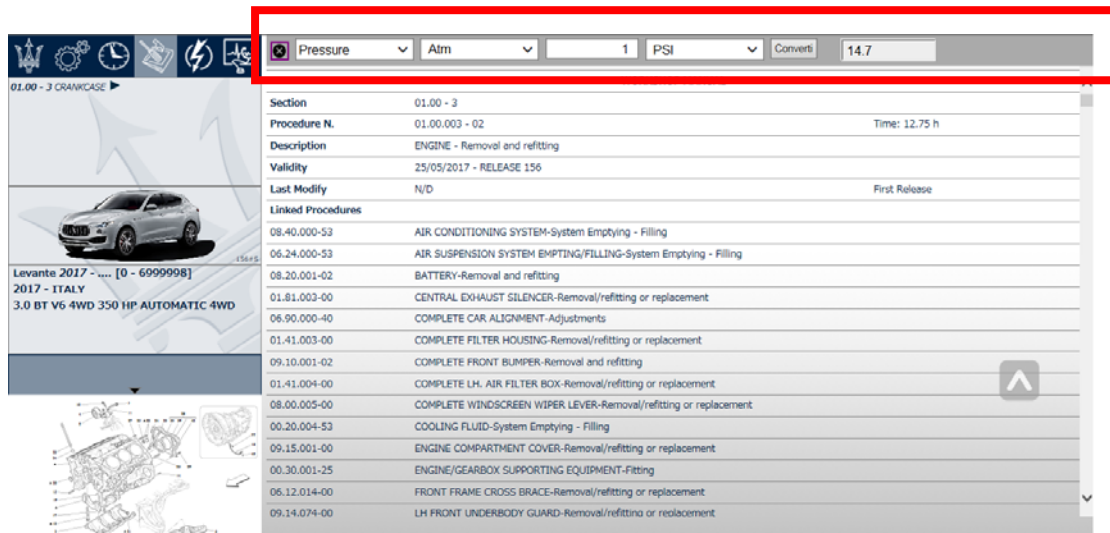
The screenshot shows a workshop manual interface for a Maserati Levante. The top right corner features a red square highlighting a conversion icon. The main content area displays a procedure for 'ENGINE - Removal and refitting' with the following details:

Section	01.00 - 3	
Procedure N.	01.00.003 - 02	Time: 12.75 h
Description	ENGINE - Removal and refitting	
Validity	25/05/2017 - RELEASE 156	
Last Modify	N/D	First Release

Below the procedure details is a list of linked procedures:

08.40.000-53	AIR CONDITIONING SYSTEM-System Emptying - Filling
06.24.000-53	AIR SUSPENSION SYSTEM EMPYING/FILLING-System Emptying - Filling
08.20.001-02	BATTERY-Removal and refitting
01.81.003-00	CENTRAL EXHAUST SILENCER-Removal/refitting or replacement
06.90.000-40	COMPLETE CAR ALIGNMENT-Adjustments
01.41.003-00	COMPLETE FILTER HOUSING-Removal/refitting or replacement
09.10.001-02	COMPLETE FRONT BUMPER-Removal and refitting
01.41.004-00	COMPLETE LH. AIR FILTER BOX-Removal/refitting or replacement
08.00.005-00	COMPLETE WINDSCREEN WIPER LEVER-Removal/refitting or replacement
00.20.004-53	COOLING FLUID-System Emptying - Filling
09.15.001-00	ENGINE COMPARTMENT COVER-Removal/refitting or replacement
00.30.001-25	ENGINE/GEARBOX SUPPORTING EQUIPMENT-Fitting
06.12.014-00	FRONT FRAME CROSS BRACE-Removal/refitting or replacement
09.14.074-00	LH FRONT UNDERBODY GUARD-Removal/refitting or replacement

Select it to display the conversion bar:



The screenshot shows the same workshop manual interface as above, but with a conversion bar highlighted by a red square. The bar contains the following elements:

- A dropdown menu set to 'Pressure'.
- A unit dropdown menu set to 'Atm'.
- An input field containing the value '1'.
- A unit dropdown menu set to 'PSI'.
- A 'Convert' button.
- A result field displaying '14.7'.

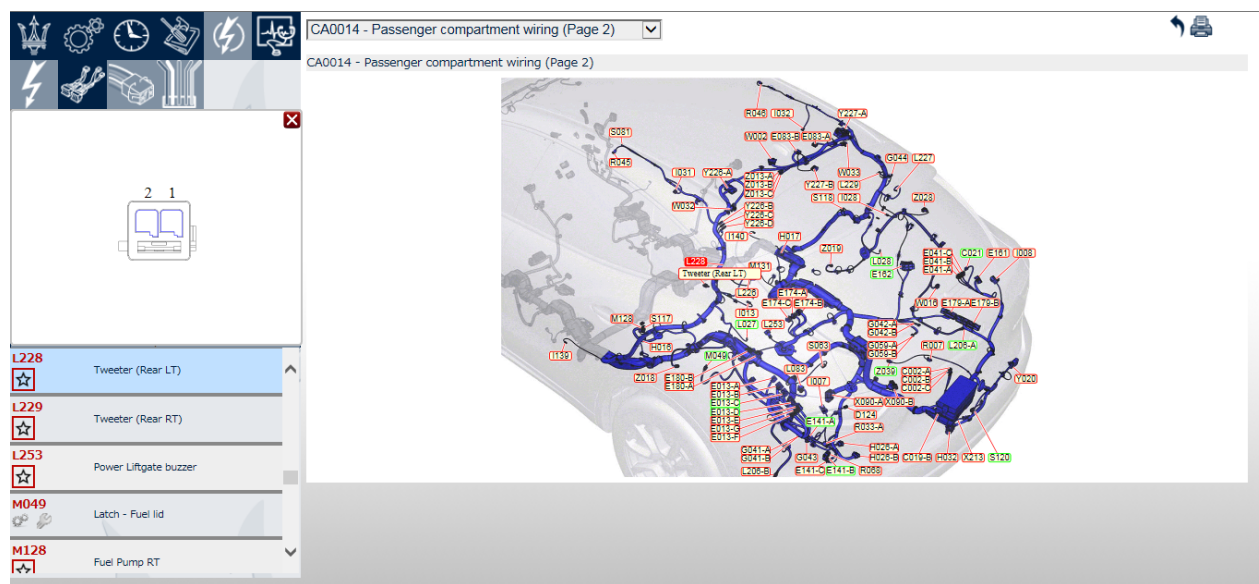
The first drop-down menu allows for the selection of the type of measurement to be converted among pressure, volume, length, temperature, power, or torque. The other two drop-down menus allow for selection of the units to be converted: the first for the starting unit; the second for the unit into which the value should be converted.

Spare Connectors

Connectors are located inside the Wiring Diagrams section by selecting the wiring subsection:



The usual screen with the list of connections present inside the wiring harness will appear on the left with the complete diagram in the center: Next, select one of the wiring harnesses shown:



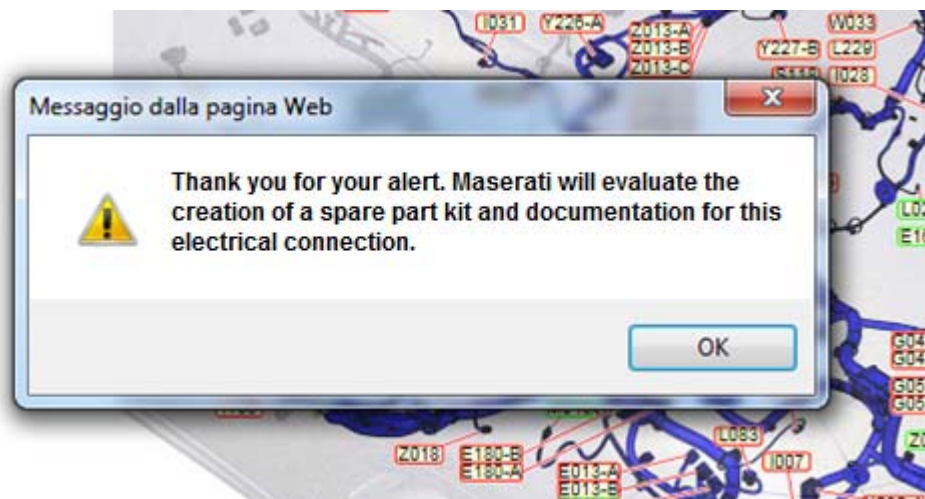
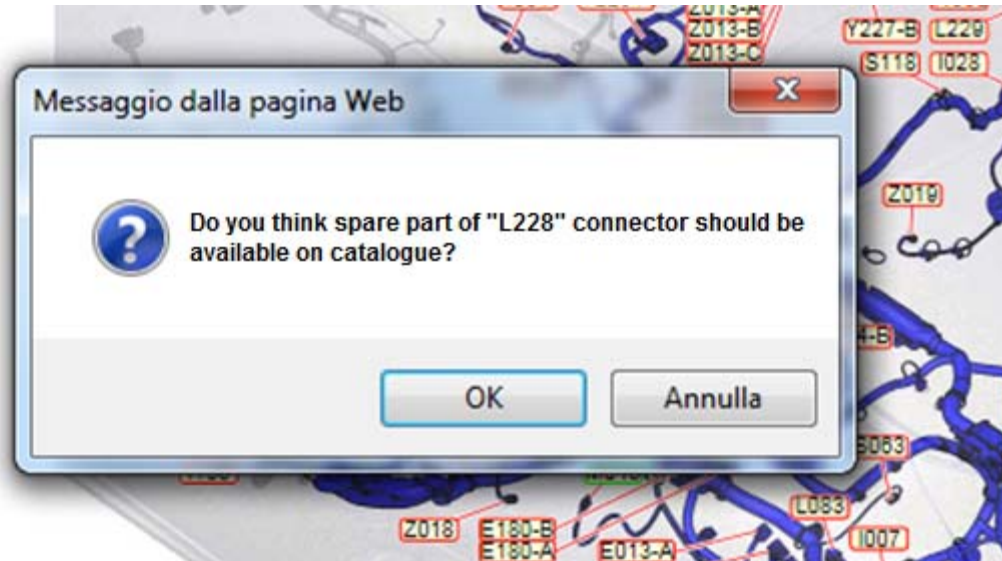
For any connectors not linked to a repair procedure (or a repair kit), instead of the usual Spare Parts Catalog and Workshop Manual icon:



you will now see the following new icon:

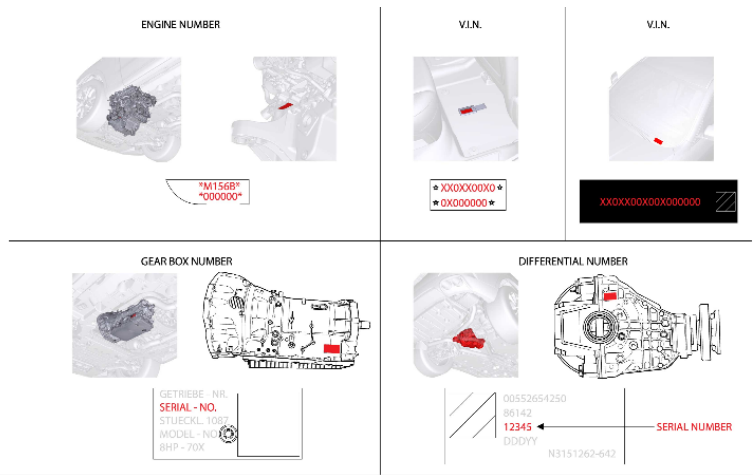
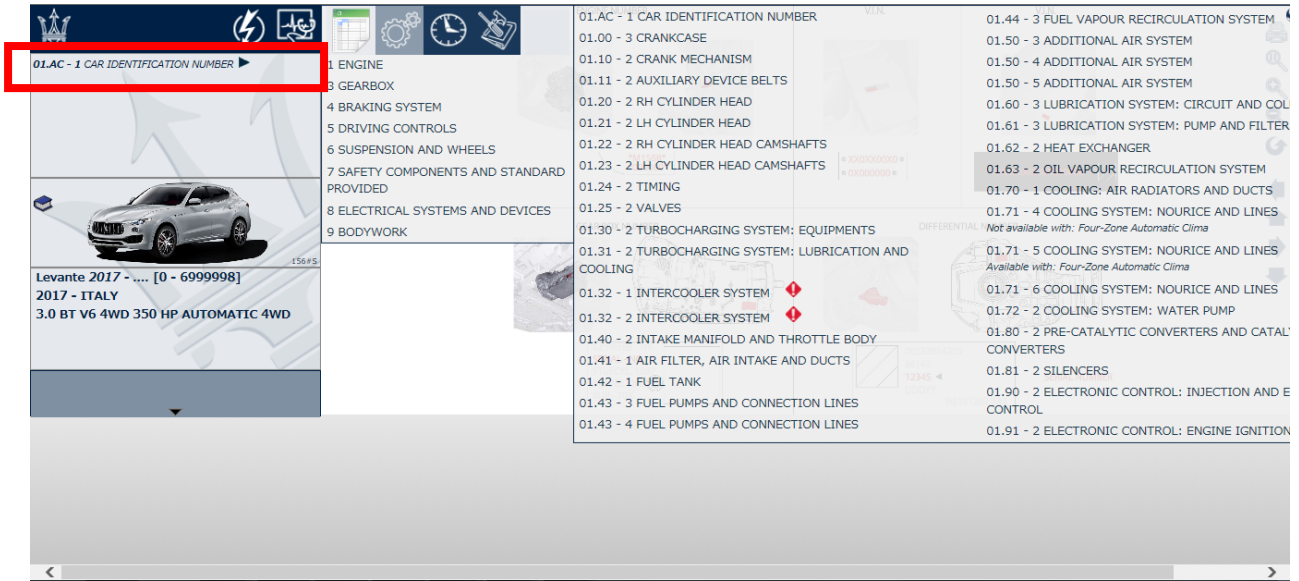


Click the new icon to request any available repair instructions and/or any spare parts that are necessary to repair the specific connector. Any available information will then be displayed. If no information is available for that specific connector, Maserati will define the priorities to be applied, and will evaluate the creation of a spare part and/or repair instructions for the requested information.



Sections of the Spare Parts Catalog, Workshop Manual, and Flat Rate Time Schedule

A new Table has been added to the Spare Parts Catalog, i.e. **01.AC-1**, indicating the positions of all the identification codes/serial numbers present on each vehicle. (E.g. engine, differential, gearbox, and windshield VIN plates).



Section 8: Subsection 08.73 - Driver Assist Systems has been added.

Currently on Quattroporte (M156), Ghibli (M157) and Levante (M161), starting from MY17. This section includes the electronic systems that support the driver while driving the vehicle. This new section can be accessed from the Workshop Manual, Flat Rate Time Schedule and Spare Parts Catalog.

Section 7: The original name "Safety Systems" has been replaced by "Safety Systems and Standard Equipment".

In addition, subsections 07.30 - Standard Equipment, and, 07.32 - On-board Documentation, have been modified and will contain only items related to these titles. This affects the Workshop Manual, Flat Rate Time Schedule and the Spare Parts Catalog.

Section 0: Two new subsections have been added.

00.25 - Contains all procedures that require calibration with diagnostic equipment.

00.26 - Contains all procedures that require mechanical adjustments.

Subsections 00.25 and 00.26 can only be viewed inside the Workshop Manual and the Flat Rate Time Schedule.

Thank you for your continued support and cooperation.

Maserati North America, Inc.
Aftersales Department