

**TECHNICAL INSTRUCTIONS  
FOR  
SPECIAL SERVICE CAMPAIGN 22TC08  
ENGINE ECU SOFTWARE UPDATE  
CERTAIN  
2022 MODEL YEAR TUNDRA VEHICLES**

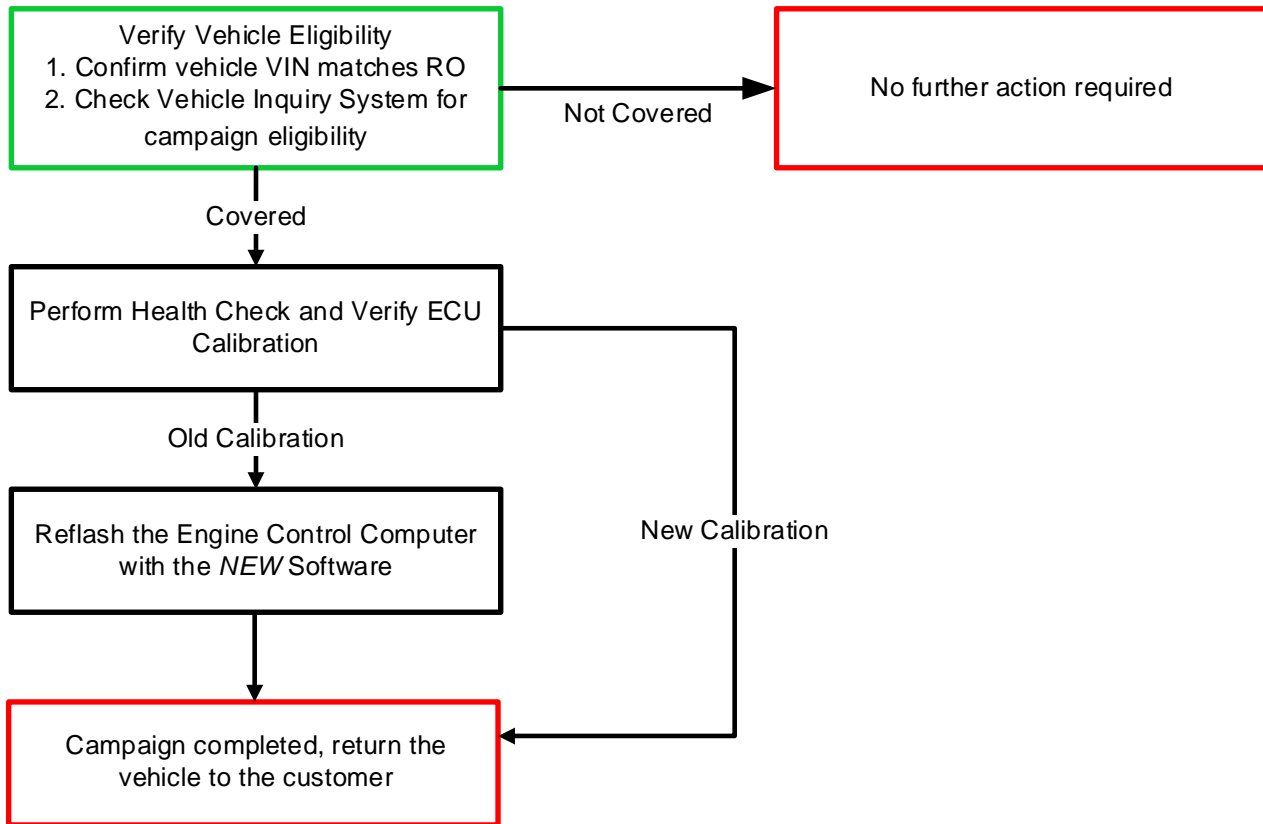
The repair quality of covered vehicles is extremely important to Toyota. All dealership technicians performing this repair are required to successfully complete the most current version of the E-Learning course “Safety Recall and Service Campaign Essentials”. To ensure that all vehicles have the repair performed correctly; technicians performing this repair are required to currently have completed all of the following courses:

- **T623 Toyota Electrical Circuit Diagnosis**

Always check which technicians can perform the repair by logging on to <https://www.uotdealerreports.com>. It is the dealership’s responsibility to select technicians with the above certification level or greater to perform this repair. Carefully review your resources, the technician skill level, and ability before assigning technicians to this repair. It is important to consider technician days off and vacation schedules to ensure there are properly trained technicians available to perform this repair at all times.

## I. OPERATION FLOW CHART

The flow chart is for reference only. DO NOT use it in place of the full technical instructions. Follow ALL steps as outlined in the full technical instructions to confirm the campaign is completed correctly.



## II. IDENTIFICATION OF AFFECTED VEHICLES

### 1. CHECK VEHICLE FOR CAMPAIGN ELIGIBILITY

- Compare the vehicles VIN to the VIN listed on the Repair Order to ensure they match.
- Check the TIS Vehicle Inquiry System to confirm the VIN is involved in this Campaign, and that it has not already been completed.

#### NOTICE:

TMNA warranty will not reimburse dealers for repairs completed on vehicles that are not affected or were previously completed, even by another dealer.

## III. PREPARATION

### A. TOOLS, SUPPLIES & EQUIPMENT

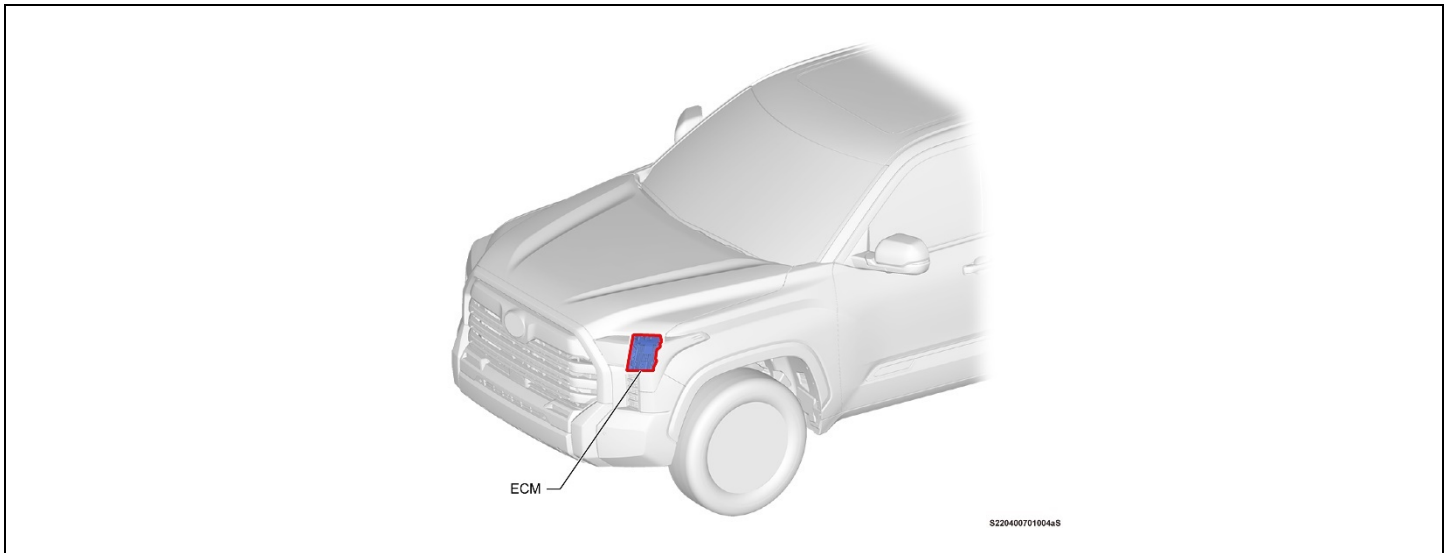
PART NUMBER	PART NAME	QTY
00451-00001-LBL	Authorized Modifications Labels	1
-	Standard Hand Tools	-
-	DCA-8000 Battery Diagnostic Station	-
00410-92007	Proof of correction form MDC	1
-	Techstream ADVi / Techstream 2.0 / Techstream Lite	-
T-SB-0107-20	ECU Flash Reprogramming With Security Signature	-

#### NOTE

- The ECM (PCM) should NOT be replaced as part of the Repair Procedure.
- Authorized Modification Labels may be ordered in packages of 25 from the Materials Distribution Center (MDC) through Dealer Daily – Parts – Dealer Support Materials Orders

## IV. BACKGROUND

Due to certain programming in the engine ECU, in the event the accelerator pedal is forcefully depressed and immediately followed by aggressive braking, there is a possibility the vehicle may stall at low engine speed. If the vehicle stalls, steering, and braking are not impacted, and the vehicle can be restarted immediately



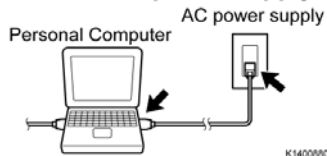
## V. SAFETY PRECAUTIONS



CRITICAL INFORMATION - READ THOROUGHLY

An ECU could be damaged if an error occurs in the communication while reprogramming the ECU. Confirm all work is performed as described in these instructions.

**Be sure to connect the personal computer to an external AC power supply.**



### 1. STABILIZE THE POWER TO THE PERSONAL COMPUTER SIDE

- a) Be sure to connect the personal computer to an external AC power supply.

**NOTICE:**

The ECU could be damaged if the battery voltage of the personal computer drops while reprogramming.

**Turn off the screen saver and power saving mode.**



- b) Turn off the screen saver and power saving mode of the personal computer so that the power to the hard disk is kept supplied.

**NOTICE:**

If the screen saver or power saving mode launches while reprogramming, the communication may be disconnected, resulting in the damage of the ECU.

**DO NOT block the ventilation opening.**



- c) **DO NOT** block the ventilation opening for the cooling fan of the personal computer.

**NOTICE:**

If the ventilation opening for the cooling fan is blocked with a sheet cover or the like, the personal computer may be heated excessively, causing the operation of the personal computer to stop.

Due to the stop of the operation, the communication for reprogramming signals could be stopped, resulting in the damage of the ECU.

## VI. ENGINE AND ECT SYSTEM CALIBRATION ID VERIFICATION



### 1. CHECK FOR DTC'S

- a) Using a Techstream, perform a Health Check to check for any Diagnostic Trouble Codes.

#### NOTICE:

This Campaign covers only the software update to the Engine and ECT System, as detailed in these instructions. It does not cover the diagnosis or replacement of any other systems on the vehicle.

### 2. CHECK CURRENT CALIBRATION

- a) Locate the Update column for the Engine System in the Stored Data tab for this vehicle.
- b) Determine the status of an available update; indicated by a YES or NO.

#### HINT:

If the CID's indicate 'Yes', proceed with the update procedure.

System Select: **Stored Data**

2022 \*\*\*\*\*  
V35A.FTS  
000085 mile

Tire Pressure / Threshold Value [psi(gauge)]  
Sensor 1: 35.91 / 27.68 Sensor 2: 35.91  
Sensor 3: 35.91 / 27.68 Sensor 4: 36.14  
Sensor 5: N/A / N/A

Health Check Results  
- Health Check does not display live data.  
- Changes in vehicle condition will not update au  
- To update Health Check, click the Refresh button

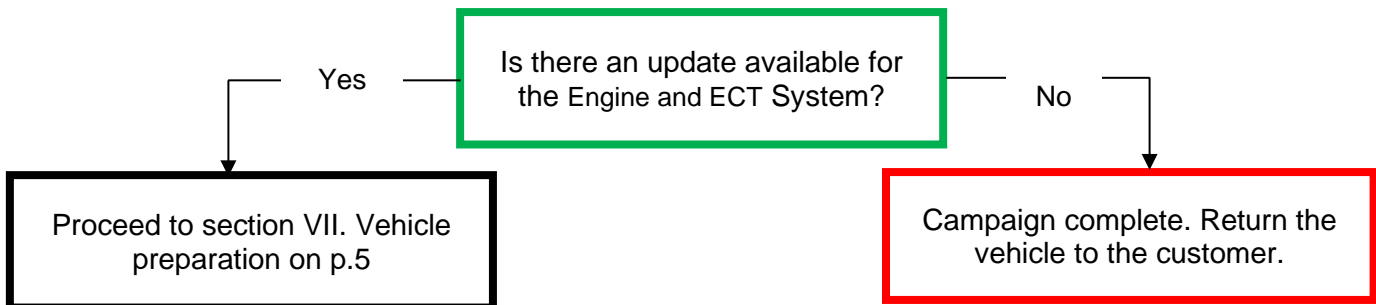
Enhanced | Generic

Campaign Status:  
**PERMANENT: YES**

ECU Security Key: -

System	Test Failed	RoB	Calibration	Update	Configure
<b>Engine</b>		●	*****	<b>Yes</b>	No
Transmission		●	8966A5034000	IVU	No
			894CF5015000	No	No
Lane Control		●	-		No
Brake		●	F15265038000	No	No
Front Radar Sensor		●	8821F6201200	No	No
Road Sign Assist		●	-		No

S220400701001aS



◀ **CRITICAL MESSAGE** ▶

It is critical that T-SB-0134-16 and T-SB-0107-20 in addition to the Technical Instructions for this Special Service Campaign are followed. This TSB outlines all steps necessary to prevent reprogramming failure. Toyota will not provide reimbursement coverage for reprogramming failures if this TSB is not followed. If you have a reprogramming failure that requires ECM replacement and the Technical Instructions and TSB were followed correctly, please create a case with the Technical Assistance Hotline documenting all information related to the failure. If sufficient reporting is received related to re-flash failure, there will be consideration for reimbursement.

## **VII. VEHICLE PREPARATION**

### **1. VEHICLE PREPARATION**

- a) Confirm the following conditions:
- Vehicle in the IG position (engine off).
  - Transaxle in Park.
  - Parking brake engaged.
  - Turn off all electrical accessories (i.e. climate control, audio system, etc.)
  - Headlight switch in the DRL OFF position.
  - Windshield wiper switch in the OFF position.

### **2. CONNECT THE 12V BATTERY TO A POWER SUPPLY**

- a) Connect the DCA-8000 or other type of a power supply (not a battery charger) to the 12 V battery.  
b) Tap the Reflash icon from the Main Menu screen of the DCA-8000.



**A power supply MUST be used during reprogramming. ECU damage will occur if the battery voltage is not properly maintained during this re-flash procedure.**

### **3. VERIFY TECHSTREAM SETUP**

- a) Verify that the Techstream meets the following conditions:
- The latest version of software is loaded.
  - The Techstream battery is fully charged. If not, connect the Techstream to a 120 V source.
  - The DLCIII cable is in good condition.



**The Techstream's battery voltage must also be maintained during the re-flash procedure. If necessary, plug the Techstream into a 120 V outlet during this procedure.**

#### **NOTICE:**

**If the Techstream communication with the vehicle fails during the re-flash procedure, the engine control computer will be damaged.**

## VIII. UPDATE CALIBRATION

### 1. CONFIRM THE ECU CALIBRATION ID

a) Confirm the current calibration ID in the Engine System.

System Select: **Stored Data**

2022 \*\*\*\*\*  
V35A-FTS  
000085 mile

Tire Pressure / Threshold Value [psi(gauge)]  
Sensor 1: 35.91 / 27.68 Sensor 2: 35.91  
Sensor 3: 35.91 / 27.68 Sensor 4: 36.14  
Sensor 5: N/A / N/A

Health Check Results  
- Health Check does not display live data.  
- Changes in vehicle condition will not update at  
- To update Health Check, click the Refresh button

ECU Security Key: -  
Campaign Status:  
PERMANENT: YES

System	Test Failed	RoB	Calibration	Update	Configure
<b>Engine</b>		●	*****	Yes	No
Transmission		●	8966A5U34000	No	No
		●	894CF5015000	No	No
Lane Control		●	-		No
Brake		●	F15265038000	No	No
Front Radar Sensor		●	8821F6201200	No	No
Road Sign Assist		●	-		No

S220400701002aS

The calibration IDs to re-flash in this campaign are as shown in the table below.

Tundra Engine Calibrations			
Model	System	Engine Calibration ID	
		Current Calibration ID	New Calibration ID
TUNDRA	Engine	896630CR2000	896630CR2200
		896630CR2100	
		896630CR2001	896630CR2201
		896630CR2101	
		896630CR3000	896630CR3200
		896630CR3100	
		896630CR3001	896630CR3201
		896630CR3101	
		896630CR4000	896630CR4200
		896630CR4100	
		896630CR4001	896630CR4201
		896630CR4101	
		896630CR5000	896630CR5200
		896630CR5100	
		896630CR5001	896630CR5201
		896630CR5101	
		896630CR6000	896630CR6200
		896630CR6100	
		896630CR6001	896630CR6201
		896630CR6101	
896630CR7000	896630CR7200		
896630CR7100			
896630CR7001	896630CR7201		
896630CR7101			

**NOTICE:**

If the Engine ECU has the New CID's, no update is necessary.

## 2. REFLASH THE ENGINE CONTROL COMPUTER

- a) Click yes on the health check results screen, or follow the links on the table above to begin the reflash process.

### NOTICE:

Reflash failure should be extremely rare and can be avoided by following all instructions and reprogramming best practices.

## IX. COMPLETE REPAIR

### 1. DISCONNECT THE DCA-8000

### 2. PERFORM VERIFICATION HEALTH CHECK

- a) Using a Techstream, perform a Health Check.
- b) Clear DTC's that may have set during the re-flash procedure.
- c) Re-run the Health Check to confirm that no DTC's reappear.



This verification health check is necessary to update the results and CID's to the National database.

### 3. CONFIRM CID UPDATE

- a) On the Stored Data tab, confirm the following for the Engine and ECT System:
  - The Calibration number has the "New CID" number.
  - The Update column lists "No"

System Select **Stored Data**

2022 \*\*\*\*\*  
V35A-FTS  
000085 mile

\*\*\*\*\*  
2022 \*\*\*\*\*\_V3:  
File Notes  
Health Check  
Data 1-20

Tire Pressure / Threshold Va  
Sensor 1: 35.91 / 27.68  
Sensor 3: 35.91 / 27.68  
Sensor 5: N/A / N/A

Health Check Results  
- Health Check does not disp  
- Changes in vehicle conditio  
- To update Health Check, clic

Enhanced Generic

Campaign Status:  
PERMANENT: YES

ECU Security Key: -

	Test Failed	RoB	Calibration	Update	Configure
<b>Engine</b>		●	*****	No	No
Transmission		●	8900A0034000	No	No
Lane Control		●	894CF5015000	No	No
Brake		●	-	No	No
Front Radar Sensor		●	F15265038000	No	No
Road Sign Assist		●	8821F6201200	No	No
		●	-	No	No

S220400701003aS



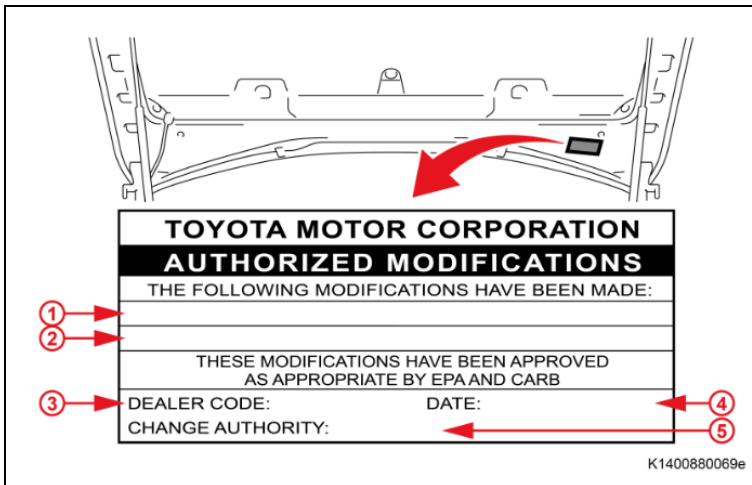
Confirm the CID's has been updated successfully to the NEW CID's by someone other than the individual who performed the repair. Refer to p.7.





## X. ATTACH THE AUTHORIZED VEHICLE MODIFICATION LABEL

- Fill out the label.
- Affix the label to the under-side of the hood.



1	Repair ECU P/N
2	Calibration ID
3	Dealer Code
4	Date Completed
5	Campaign Code (22TC08)

### ◀ VERIFY REPAIR QUALITY ▶

- Confirm the system Calibration has been updated successfully
- Confirm there are no DTCs in the Engine system

If you have any questions regarding this update, please contact your area representative.

## XI. APPENDIX

### A. CAMPAIGN DESIGNATION DECODER

