

## Field campaign

<b>Topic</b>	Bentayga Hybrid - Engine control module update (SC 22/24)
<b>Market area</b>	China 796 VW Import Comp. Ltd (Vico), Beijing (6796),United States E05 Bentley USA and rest America (6E05)
<b>Brand</b>	Bentley
<b>Transaction No.</b>	2067613/1
<b>Campaign number</b>	EC49
<b>Note</b>	
<b>Type</b>	
<b>US code</b>	

## Vehicle data

### Bentayga Hybrid

#### Sales types

Type	MY	Brand	Designation	Engine code	Gearbox code	Final drive code
4V14F9	2020	E		*	*	*
4V14F9	2021	E		*	*	*

#### Chas is numbers

Manufacturer	Filler	Type	Filler	MY	Factory	From	To	Prod from	Prod to
SJA	*	*	*	L	*	027202	031844		
SJA	*	*	*	M	*	035191	039546		

## Documents

Document name
<a href="#">master.xml</a>
<a href="#">sc2224vinlist.pdf</a>

## Notes

### ▪ Repair instructions

### Technical background

A software update to the *Engine Control Module* is required

### Remedy

Carry out the instructions within the Work section to completion

### Customer notification

Ensure the instructions are conducted at the nearest opportunity

Make a note of the required action on the workshop order before it is signed by the customer

If it is omitted to perform the work required during a workshop visit, the customer should be notified

You should also pass on this information to your new and used car sales departments to allow affected vehicles to be checked and repaired immediately

### Warranty accounting

instructions Warrantytype 710

or 790 Damage service number EC49

Damage code 00 66

#### Time to conduct the software update and readiness code procedure

Labour Operation Code 01 51 00 00

Time As per ODIS log (max. 50 TU)

#### Time to conduct static/dynamic drive cycles and Road test

Labour Operation Code 01 21 00 00

Time 50 TU

▪

NOTE: In the event that the readiness code test was not successful at the first attempt and a road test was required in conjunction with a second attempt at completing the readiness code test please ensure a current ODIS log is included with all applicable warranty claim submissions

### Genuine parts

Not applicable

### Parts supply

Not applicable

### Parts despatch control

Not applicable

---

## Repair instructions

### ▪ Notes

### Technical background

A software update to the *Engine Control Module* is required

### Check

If the vehicle is not already listed as repaired within the "Repair history" (in Elsa Pro) refer to the Identification section

Should neither be evident ("Repair history" or applicable paint marks) carry out the required work in accordance with these instructions

## Genuine parts

Not applicable

## Work



- Hybrid vehicles use a High voltage system and MUST only be worked on by suitably qualified personnel
- *Please ensure all guidelines within the repair manual are strictly followed before and whilst conducting any work on vehicles with a High voltage system*
- The closed-circuit voltage of the vehicle must be at least 12.5 volts during the update. Connect a suitable battery charger to the vehicle. For further information refer to the Repair manual
- During the update switch off all unnecessary consumers (ventilation, seat heater, interior illumination etc)
- Because of the highest transmission stability you MUST use the diagnosis interface VAS 6154 (WiFi diagnostic tool) ONLY in USB operation or the cable-connected VAS 5055 for the reprogramming (updating) of control units. If these units are not available, the diagnosis interface VAS 5054 (A) can also be used in USB mode
- Do Not under any circumstances use a Bluetooth connection to conduct the reprogramming (updating) of any control units

IMPORTANT: Please ensure ODIS version 2.30.5 or later is installed before commencing with the below steps

### 1) Select and run Guided fault finding

- Referring to Figure 1 - Within the Special functions tab select SVM - Code input (A) then select Perform test (B)

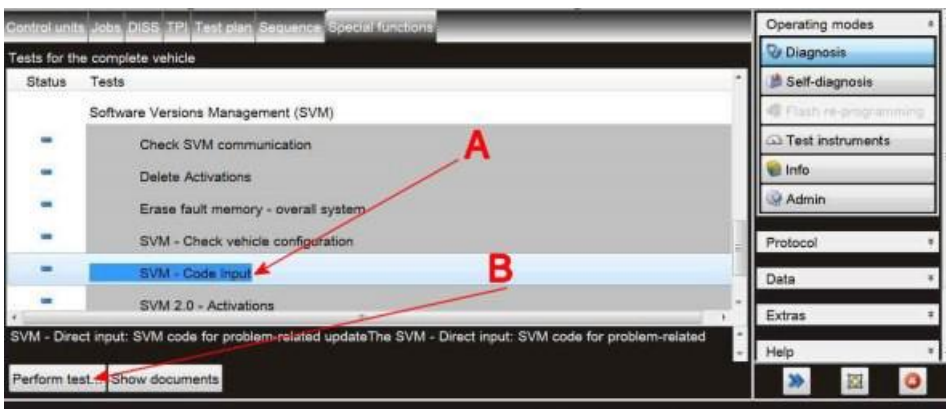


Figure 1

### 2) On the next screen enter SVM code 4V0HYCLUTCH01 (Figure 2)

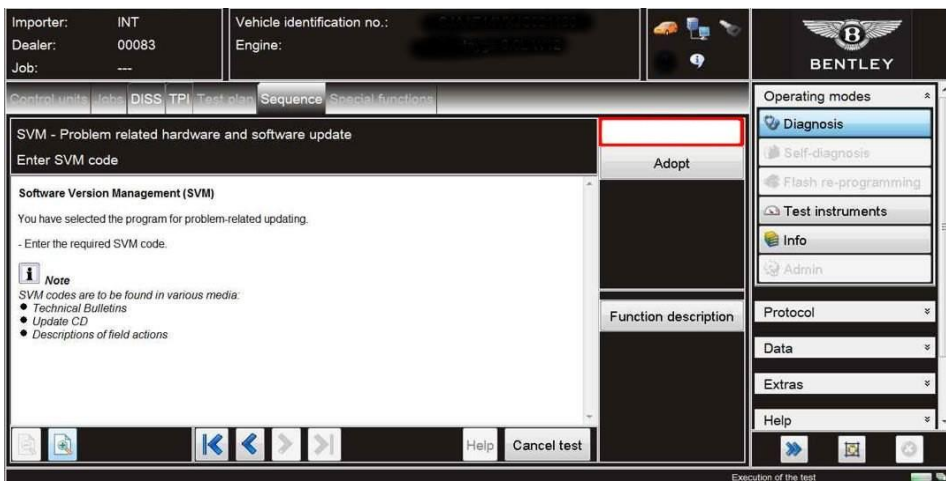


Figure 2

3) On the following screen, confirm SVM code 4V0HYCLUTCH01 is correct

- All control modules will now be interrogated
- The update will then be suggested

4) Carry out all on screen prompts until completion

To wake up the system after the update is completed a bus silence is required, carry out the following steps in the order stated below:

- Switch off the ignition
- Remove the diagnostic interface from the OBD port
- Switch off and remove the battery charger from the vehicle
- Close the bonnet, boot and all doors
- Lock the vehicle
- Wait 5 minutes to allow the vehicle to go into bus silence
- When 5 minutes has elapsed, unlock the vehicle and open the driver's door
- Switch on the ignition

5) Check and confirm that no DTC's are stored or there are no engine operation issues evident prior to starting the procedure from Step 6 - Save an online log to confirm that no DTC's were evident at this stage of the procedure

VERY IMPORTANT: The operative conducting this procedure must be aware of the following whilst the vehicle is undergoing this procedure during the current workshop visit

- Do not attempt to erase any DTC's from the engine control module/s and transmission control module
- VERY IMPORTANT: Do not conduct a readiness test other than when instructed within this procedure
- Do not disconnect the battery whilst the CAN BUS is awake
- Failure to comply with any of the above will erase the previously set engine adaptations, therefore the complete process will require repeating

CAUTION: Ensure that any outstanding issues are resolved before commencing

IMPORTANT: Ensure that before the next part of the procedure is conducted (engine DTC adaptations clear) the engine must be at operating temperature (>90C)

6) Carry out the engine adaptations clear routine as follows:

- Referring to Figure 3 - Navigate to Test plan - Select own test

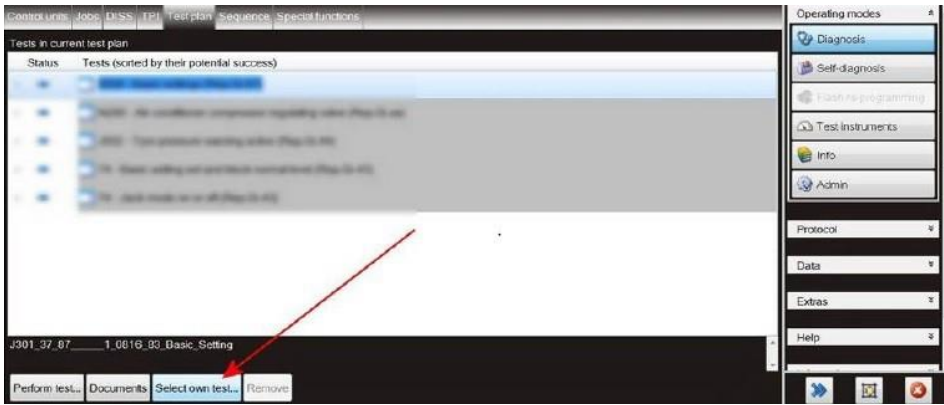


Figure 3

- Referring to Figure 4
- Select - Powertrain (Point A)
- Select - Engine (Point B)
- Select - 01 - Self-Diagnostic capable system (Point C)



Figure 4

- Referring to Figure 5
- Select - 01 – Engine control unit – J623 (Point A)
- Select - 01 – Subsystems, marginal conditions (Point B)
- Select - Clear engine adaption (Point C)
- Select - Attach to test plan (Point D), then complete the test

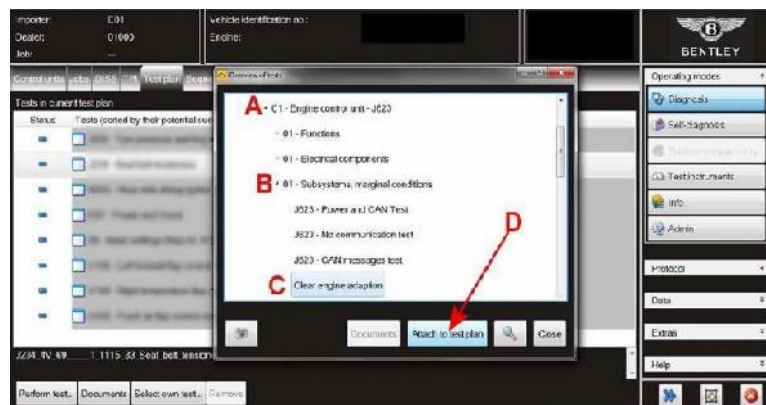


Figure 5

7) Conduct the Readiness code procedure within 01 – Guided functions as follows:

- Referring to Figure 6 – Select Readiness code (Point A)
- Select Execute (Point B)

**!** ENSURE NEUTRAL IS SELECTED DURING THE TEST WHEN INSTRUCTED AS DIRECTED BY ODIS

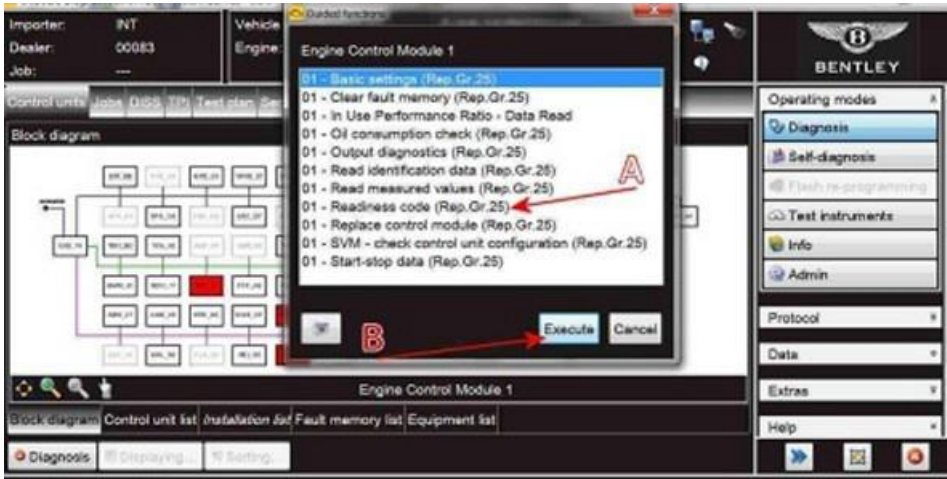


Figure 6

- Carry out the Readiness code test until complete as shown in Figure 7

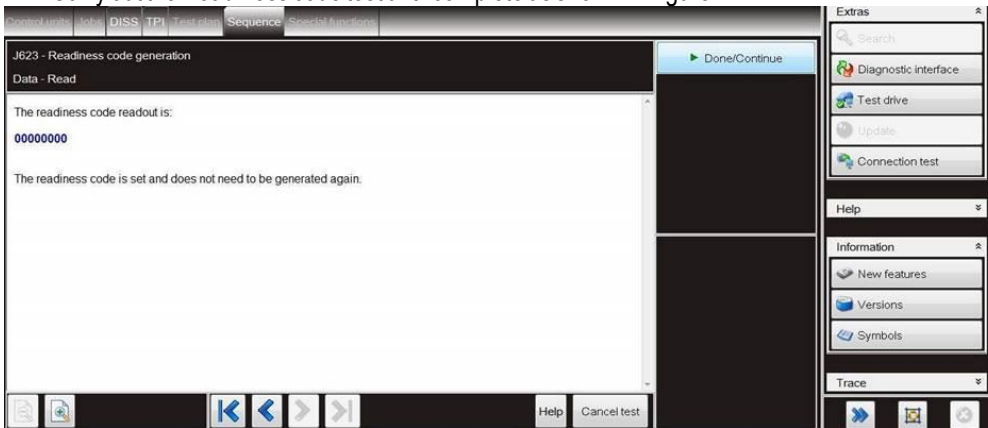


Figure 7

- Should the readiness code bytes be 00000000 NO FURTHER ACTION IS REQUIRED – proceed to step 8. Should ANY of the bytes be 1 - The operative MUST conduct a road test
- On return repeat the Readiness code test again. Once complete you must then recheck and confirm the readiness code is 00000000 – Once complete proceed to step 8

8) Idle torque adaptations - These must be done while the vehicle is stationary

VERY IMPORTANT: Ensure the Park brake is applied, the operative should also apply the footbrake for the duration of the torque adaptations procedure process

- Select Neutral and ensure A/C, A/C MAX and recirculation are switched ON. Allow the engine to idle for 30 seconds
- Select Drive and ensure A/C, A/C MAX and recirculation are still switched ON. Allow the engine to idle for 30 seconds
- Select Drive and ensure A/C, A/C MAX and recirculation are now switched OFF. Allow the engine to idle for 30 seconds
- Select Neutral and ensure A/C, A/C MAX and recirculation are now switched OFF. Allow the engine to idle for 30 seconds

Repeat the above steps a further 3 times, (4 times total)

9) Clear the vehicle of any DTC's generated as a result of performing the previous steps

Should any applicable DTC's still be evident these must be resolved before continuing the next part of this TPI

10) Find a suitable road to carry out the following drive cycle NOTE: The diagnostic machine will be required whilst conducting the road test

IMPORTANT: The operative MUST ensure the battery within the diagnostic machine is suitably charged before proceeding

IMPORTANT: The engine MUST be at operating temperature

CAUTION: Should any engine operating issues be evident during the road test, the operative should submit a Technical DISS query and await feedback before conducting any further work

- Select M for manual gears, confirm this on the DIP

- In 3rd gear raise the vehicle speed to 34mph/55kph (approximately 2400rpm) and maintain that speed for 60 seconds avoiding any acceleration/deceleration, if the cycle is interrupted please repeat until successful. Cruise control can be used if required
- Once the drive cycle is complete turn the engine off and on again
- Repeat the above drive cycle 3 times, ensure the engine off/on is carried out after each cycle

IMPORTANT: Record the time/mileage of each of the drive cycles and extended road test

12) Carry out a short road test to confirm smooth operation of the Engine and Transmission

VERY IMPORTANT: After conducting this procedure the Retailer must be aware of the following:

- Do not attempt to erase any DTC's from the engine control module/s and transmission control module
  - Do not conduct any further readiness code tests
  - Do not disconnect the battery whilst the CAN BUS is awake
  - Failure to comply with any of the above will erase the previously set engine adaptations, therefore the complete process will require repeating
- 12) On completion place a red paint completion mark on the brake fluid reservoir - Refer to the Identification section

### Identification



▪ [Repair instructions](#) ▪ [Notes](#)

SJAA314V1MC035191	SJAA314V4MC035458	SJAA314V8MC035799	SJAA314V6MC036286	SJAA314V1MC036499
SJAA314V3MC035211	SJAA314V6MC035462	SJAA314V6MC035803	SJAA314V1MC036289	SJAA314V8MC036502
SJAA314V8MC035236	SJAA314V8MC035527	SJAA314V3MC035807	SJAA314V1MC036292	SJAA314V3MC036505
SJAA314VXMC035240	SJAA314V1MC035532	SJAA314V3MC035810	SJAA314V7MC036295	SJAA314V9MC036508
SJAA314V7MC035244	SJAA314V0MC035537	SJAA314V9MC035813	SJAA314V2MC036298	SJAA314V9MC036511
SJAA314V4MC035248	SJAA314V6MC035543	SJAA314V4MC035816	SJAA314V9MC036301	SJAA314V4MC036514
SJAA314V6MC035252	SJAA314V3MC035547	SJAA314VXMC035819	SJAA314V4MC036304	SJAA314VXMC036517
SJAA314V3MC035256	SJAA314V3MC035550	SJAA314VXMC035822	SJAA314V1MC036308	SJAA314V5MC036523
SJAA314V5MC035260	SJAA314V9MC035553	SJAA314V5MC035825	SJAA314V1MC036311	SJAA314V2MC036527
SJAA314V2MC035264	SJAA314V4MC035556	SJAA314V2MC035829	SJAA314V0MC036316	SJAA314V2MC036530
SJAA314V8MC035270	SJAA314V6MC035560	SJAA314V4MC035833	SJAA314V4MC036321	SJAA314V1MC036535
SJAA314V5MC035274	SJAA314V5MC035565	SJAA314V3MC035838	SJAA314VXMC036324	SJAA314V9MC036539
SJAA314V2MC035278	SJAA314V0MC035568	SJAA314V7MC035843	SJAA314V5MC036327	SJAA314V9MC036542
SJAA314V6MC035283	SJAA314V2MC035572	SJAA314V8MC035849	SJAA314V5MC036330	SJAA314V1MC036549
SJAA314V3MC035287	SJAA314VXMC035576	SJAA314V3MC035855	SJAA314V2MC036334	SJAA314V1MC036552
SJAA314V5MC035291	SJAA314V1MC035580	SJAA314V7MC035860	SJAA314V8MC036337	SJAA314VXMC036565
SJAA314V2MC035295	SJAA314V9MC035584	SJAA314V2MC035863	SJAA314V1MC036342	SJAA314V9MC036573
SJAA314VXMC035299	SJAA314V6MC035588	SJAA314V8MC035866	SJAA314V7MC036345	SJAA314V6MC036577
SJAA314V8MC035303	SJAA314V8MC035592	SJAA314V3MC035869	SJAA314V4MC036352	SJAA314V8MC036581
SJAA314V5MC035307	SJAA314V9MC035598	SJAA314V3MC035872	SJAA314VXMC036355	SJAA314V3MC036584
SJAA314V7MC035311	SJAA314V7MC035602	SJAA314V9MC035875	SJAA314V5MC036358	SJAA314V8MC036595
SJAA314V4MC035315	SJAA314V4MC035606	SJAA314V4MC035878	SJAA314V5MC036361	SJAA314V5MC036599
SJAA314V1MC035319	SJAA314V6MC035610	SJAA314V4MC035881	SJAA314V0MC036364	SJAA314V1MC036602
SJAA314V1MC035322	SJAA314V3MC035614	SJAA314V1MC035885	SJAA314V6MC036367	SJAA314V2MC036608
SJAA314V7MC035325	SJAA314V0MC035618	SJAA314V7MC035888	SJAA314V6MC036370	SJAA314V6MC036613
SJAA314V2MC035328	SJAA314V2MC035622	SJAA314V9MC035892	SJAA314V1MC036373	SJAA314V3MC036617
SJAA314V2MC035331	SJAA314V1MC035630	SJAA314V6MC035896	SJAA314V7MC036376	SJAA314V3MC036620
SJAA314V8MC035334	SJAA314V9MC035634	SJAA314V1MC035899	SJAA314V2MC036379	SJAA314V7MC036622
SJAA314V5MC035338	SJAA314V4MC035637	SJAA314V8MC035902	SJAA314V2MC036382	SJAA314V2MC036625
SJAA314V5MC035341	SJAA314V6MC035641	SJAA314V3MC035905	SJAA314V8MC036385	SJAA314V8MC036628
SJAA314V2MC035345	SJAA314V1MC035644	SJAA314V9MC035908	SJAA314V3MC036388	SJAA314V5MC036635
SJAA314V8MC035348	SJAA314V0MC035649	SJAA314V9MC035911	SJAA314V3MC036391	SJAA314V2MC036639
SJAA314V8MC035351	SJAA314V2MC035653	SJAA314V4MC035914	SJAA314V9MC036394	SJAA314V4MC036643
SJAA314V3MC035354	SJAA314V1MC035661	SJAA314VXMC035917	SJAA314V4MC036397	SJAA314V5MC036649
SJAA314V9MC035357	SJAA314V9MC035665	SJAA314V9MC035925	SJAA314V0MC036400	SJAA314V7MC036653
SJAA314V9MC035360	SJAA314V6MC035669	SJAA314V6MC035929	SJAA314V3MC036407	SJAA314V6MC036661
SJAA314V4MC035363	SJAA314V1MC035708	SJAA314V8MC035933	SJAA314V7MC036412	SJAA314V1MC036664
SJAA314V1MC035367	SJAA314V7MC035714	SJAA314V5MC035937	SJAA314V2MC036415	SJAA314V6MC036675
SJAA314V3MC035371	SJAA314V4MC035718	SJAA314V7MC035941	SJAA314V8MC036418	SJAA314V1MC036678
SJAA314V0MC035375	SJAA314VXMC035724	SJAA314V6MC035946	SJAA314V8MC036421	SJAA314V3MC036682
SJAA314V8MC035379	SJAA314V7MC035728	SJAA314V0MC035960	SJAA314V3MC036424	SJAA314V3MC036696
SJAA314VXMC035383	SJAA314V9MC035732	SJAA314V8MC035964	SJAA314V9MC036427	SJAA314V9MC036699
SJAA314V5MC035386	SJAA314V4MC035735	SJAA314V5MC035968	SJAA314V4MC036433	SJAA314V5MC036702
SJAA314V7MC035390	SJAA314VXMC035738	SJAA314V7MC035972	SJAA314V3MC036438	SJAA314V8MC036709
SJAA314V2MC035393	SJAA314VXMC035741	SJAA314V4MC035976	SJAA314V5MC036442	SJAA314V3MC036715
SJAA314VXMC035397	SJAA314V5MC035744	SJAA314V6MC035980	SJAA314V0MC036445	SJAA314V9MC036721
SJAA314V8MC035401	SJAA314V0MC035747	SJAA314V3MC035984	SJAA314V6MC036448	SJAA314V6MC036725
SJAA314V5MC035405	SJAA314V0MC035750	SJAA314V3MC036231	SJAA314VXMC036453	SJAA314V3MC036729
SJAA314V2MC035409	SJAA314V6MC035753	SJAA314V0MC036235	SJAA314V0MC036459	SJAA314VXMC036744
SJAA314V4MC035413	SJAA314V1MC035756	SJAA314V7MC036247	SJAA314V0MC036462	SJAA314V7MC036748
SJAA314VXMC035416	SJAA314V7MC035759	SJAA314V7MC036250	SJAA314V6MC036465	SJAA314V8MC036757
SJAA314V5MC035419	SJAA314V7MC035762	SJAA314V2MC036253	SJAA314V3MC036469	SJAA314V3MC036763
SJAA314V5MC035422	SJAA314V6MC035767	SJAA314V8MC036256	SJAA314V3MC036472	SJAA314V2MC036768
SJAA314V6MC035431	SJAA314V8MC035771	SJAA314VXMC036260	SJAA314V9MC036475	SJAA314V5MC036781
SJAA314V3MC035435	SJAA314V5MC035775	SJAA314V9MC036265	SJAA314V4MC036478	SJAA314V2MC036785
SJAA314V9MC035438	SJAA314V2MC035779	SJAA314V4MC036268	SJAA314V4MC036481	SJAA314V2MC036799
SJAA314V0MC035442	SJAA314V4MC035783	SJAA314V4MC036271	SJAA314V1MC036485	SJAA314V8MC036810
SJAA314V8MC035446	SJAA314V1MC035787	SJAA314VXMC036274	SJAA314V9MC036489	SJAA314V4MC036819
SJAA314VXMC035450	SJAA314V3MC035791	SJAA314V5MC036277	SJAA314V9MC036492	SJAA314V2MC036835
SJAA314V7MC035454	SJAA314V0MC035795	SJAA314V5MC036280	SJAA314V4MC036495	SJAA314V7MC036863



INTERNAL

SJAA314V4MC036867	SJAA314V6MC037244	SJAA314V8MC037715	SJAA314V2MC038469	SJAA314V5MC038854
SJAA314V2MC036883	SJAA314V3MC037248	SJAA314V7MC037723	SJAA314V5MC038482	SJAA314V2MC038858
SJAA314VXMC036887	SJAA314V5MC037252	SJAA314V6MC037728	SJAA314V8MC038489	SJAA314V2MC038861
SJAA314V6MC036918	SJAA314V2MC037256	SJAA314VXMC037764	SJAA314V3MC038500	SJAA314V2MC038911
SJAA314V3MC036925	SJAA314V4MC037260	SJAA314V4MC037789	SJAA314V0MC038504	SJAA314VXMC038915
SJAA314V0MC036929	SJAA314VXMC037263	SJAA314V0MC037806	SJAA314V6MC038507	SJAA314V7MC038919
SJAA314V8MC036936	SJAA314V9MC037271	SJAA314V4MC037839	SJAA314V2MC038519	SJAA314V6MC038927
SJAA314VXMC036940	SJAA314V3MC037279	SJAA314V1MC037894	SJAA314V8MC038525	SJAA314V5MC038935
SJAA314V7MC036944	SJAA314V9MC037285	SJAA314VXMC037926	SJAA314V3MC038528	SJAA314V0MC038938
SJAA314V5MC036957	SJAA314V0MC037305	SJAA314V4MC037937	SJAA314V9MC038534	SJAA314VXMC038946
SJAA314V7MC036961	SJAA314V1MC037314	SJAA314VXMC037960	SJAA314V8MC038542	SJAA314V7MC038953
SJAA314V4MC036965	SJAA314V7MC037317	SJAA314V9MC037979	SJAA314V1MC038558	SJAA314V2MC038956
SJAA314V7MC036975	SJAA314V7MC037334	SJAA314V4MC037999	SJAA314V2MC038567	SJAA314V1MC038964
SJAA314V0MC037000	SJAA314V6MC037339	SJAA314V2MC038018	SJAA314V4MC038571	SJAA314V9MC038968
SJAA314V6MC037003	SJAA314V1MC037345	SJAA314V1MC038057	SJAA314V5MC038580	SJAA314V0MC038972
SJAA314V7MC037009	SJAA314V8MC037360	SJAA314V5MC038112	SJAA314V2MC038584	SJAA314VXMC038980
SJAA314V7MC037012	SJAA314V7MC037365	SJAA314V4MC038120	SJAA314V8MC038587	SJAA314V6MC038989
SJAA314V2MC037015	SJAA314V4MC037372	SJAA314V7MC038130	SJAA314V3MC038593	SJAA314V5MC038997
SJAA314V8MC037018	SJAA314V3MC037394	SJAA314V4MC038134	SJAA314V9MC038596	SJAA314V5MC039003
SJAA314V3MC037024	SJAA314V7MC037401	SJAA314VXMC038140	SJAA314V8MC038606	SJAA314V5MC039017
SJAA314V9MC037027	SJAA314V8MC037407	SJAA314V2MC038150	SJAA314V3MC038609	SJAA314V4MC039025
SJAA314V2MC037032	SJAA314V5MC037414	SJAA314V5MC038160	SJAA314V3MC038612	SJAA314V1MC039029
SJAA314VXMC037036	SJAA314V7MC037432	SJAA314V5MC038224	SJAA314V0MC038616	SJAA314V3MC039033
SJAA314V5MC037039	SJAA314V4MC037436	SJAA314V9MC038257	SJAA314V6MC038636	SJAA314V4MC039042
SJAA314V6MC037048	SJAA314V8MC037441	SJAA314V2MC038262	SJAA314V9MC038646	SJAA314V9MC039053
SJAA314V6MC037051	SJAA314V0MC037448	SJAA314VXMC038266	SJAA314VXMC038655	SJAA314V4MC039056
SJAA314V1MC037054	SJAA314V8MC037455	SJAA314V7MC038273	SJAA314V5MC038658	SJAA314VXMC039059
SJAA314V7MC037057	SJAA314V7MC037463	SJAA314V4MC038277	SJAA314V5MC038661	SJAA314VXMC039062
SJAA314V7MC037060	SJAA314V8MC037469	SJAA314V3MC038285	SJAA314V3MC038674	SJAA314V0MC039071
SJAA314V3MC037069	SJAA314VXMC037473	SJAA314V9MC038291	SJAA314V0MC038678	SJAA314V1MC039077
SJAA314V3MC037072	SJAA314V9MC037481	SJAA314V1MC038298	SJAA314V8MC038685	SJAA314V1MC039094
SJAA314V9MC037075	SJAA314V0MC037501	SJAA314VXMC038302	SJAA314V3MC038688	SJAA314V5MC039101
SJAA314V4MC037081	SJAA314V8MC037505	SJAA314V0MC038308	SJAA314V3MC038691	SJAA314V6MC039107
SJAA314V5MC037087	SJAA314V5MC037512	SJAA314V2MC038312	SJAA314V9MC038694	SJAA314V8MC039111
SJAA314V6MC037096	SJAA314V8MC037522	SJAA314V3MC038321	SJAA314V4MC038697	SJAA314V3MC039114
SJAA314V4MC037100	SJAA314V9MC037528	SJAA314V9MC038324	SJAA314V2MC038701	SJAA314V9MC039117
SJAA314VXMC037103	SJAA314V8MC037536	SJAA314V7MC038337	SJAA314V5MC038708	SJAA314V9MC039120
SJAA314V7MC037110	SJAA314V5MC037543	SJAA314V9MC038341	SJAA314V5MC038711	SJAA314V4MC039123
SJAA314V8MC037116	SJAA314V4MC037551	SJAA314V6MC038345	SJAA314V6MC038717	SJAA314V1MC039127
SJAA314V0MC037126	SJAA314V5MC037560	SJAA314V5MC038353	SJAA314V6MC038720	SJAA314V4MC039140
SJAA314V7MC037141	SJAA314V2MC037564	SJAA314VXMC038378	SJAA314V7MC038726	SJAA314V7MC039150
SJAA314V2MC037144	SJAA314VXMC037568	SJAA314V1MC038382	SJAA314V2MC038732	SJAA314V1MC039158
SJAA314V8MC039223	SJAA314V7MC037575	SJAA314V0MC038387	SJAA314V8MC038735	SJAA314V2MC039170
SJAA314V4MC039235	SJAA314V4MC037579	SJAA314V4MC038392	SJAA314V3MC038738	SJAA314V8MC039173
SJAA314V1MC039239	SJAA314V1MC037586	SJAA314V1MC038396	SJAA314V4MC038747	SJAA314V3MC039176
SJAA314V4MC039249	SJAA314VXMC039269	SJAA314V7MC038399	SJAA314V4MC038750	SJAA314V9MC039179
SJAA314V8MC039254	SJAA314V2MC039279	SJAA314V7MC038404	SJAA314VXMC038753	SJAA314V9MC039182
SJAA314V2MC039265	SJAA314V2MC039282	SJAA314VXMC038414	SJAA314V5MC038756	SJAA314V4MC039185
SJAA314V8MC037147	SJAA314V8MC039285	SJAA314V9MC039294	SJAA314V0MC038762	SJAA314VXMC039188
SJAA314V1MC037152	SJAA314V3MC039288	SJAA314V4MC039297	SJAA314V6MC038765	SJAA314V2MC039203
SJAA314V9MC037156	SJAA314V3MC039291	SJAA314V1MC039306	SJAA314V5MC038790	SJAA314V8MC039206
SJAA314V4MC037159	SJAA314V5MC037591	SJAA314V9MC039330	SJAA314V8MC039402	SJAA314V3MC039212
SJAA314V7MC037169	SJAA314V7MC037608	SJAA314V0MC039345	SJAA314V3MC039422	SJAA314V9MC039215
SJAA314V9MC037173	SJAA314V6MC037616	SJAA314VXMC039370	SJAA314V6MC039429	SJAA314V6MC039219
SJAA314V4MC037209	SJAA314V8MC037620	SJAA314V8MC038430	SJAA314V3MC039470	SJAA314VXMC039532
SJAA314V8MC037214	SJAA314V5MC037624	SJAA314V2MC038438	SJAA314V9MC039487	SJAA314VXMC039546
SJAA314V7MC037219	SJAA314V8MC037651	SJAA314V6MC038443	SJAA314V2MC039525	
SJAA314V8MC037228	SJAA314V1MC037667	SJAA314V5MC038448	SJAA314V1MC038818	
SJAA314VXMC037232	SJAA314V3MC037671	SJAA314V8MC038461	SJAA314V1MC038821	
SJAA314V7MC037236	SJAA314V0MC037675	SJAA314V7MC038466	SJAA314V5MC038837	

INTERNAL  
USA & CANADA

SJAAJ2ZV2LC027202	SJAAJ2ZVXLC027822	SJAAJ2ZV0LC031328	SJAAJ2ZV1MC036099	SJAAJ2ZV9MC036738
SJAAJ2ZV0LC027277	SJAAJ2ZV0LC027831	SJAAJ2ZVXLC031353	SJAAJ2ZVXMC036103	SJAAJ2ZV5MC036753
SJAAJ2ZV8LC027298	SJAAJ2ZV1LC027840	SJAAJ2ZV7LC031424	SJAAJ2ZV7MC036107	SJAAJ2ZV9MC036772
SJAAJ2ZV1LC027322	SJAAJ2ZV2LC027846	SJAAJ2ZV4LC031459	SJAAJ2ZV7MC036110	SJAAJ2ZV8MC036777
SJAAJ2ZV2LC027328	SJAAJ2ZV1LC027854	SJAAJ2ZV4LC031462	SJAAJ2ZV2MC036113	SJAAJ2ZV4MC036789
SJAAJ2ZVXLC027335	SJAAJ2ZVXLC027870	SJAAJ2ZVXLC031465	SJAAJ2ZV8MC036116	SJAAJ2ZV9MC036805
SJAAJ2ZV3LC027340	SJAAJ2ZV7LC027874	SJAAJ2ZV3LC031498	SJAAJ2ZV3MC036119	SJAAJ2ZVXMC036814
SJAAJ2ZV0LC027344	SJAAJ2ZV4LC027878	SJAAJ2ZV1LC031502	SJAAJ2ZV3MC036122	SJAAJ2ZV0MC036823
SJAAJ2ZV0LC027361	SJAAJ2ZV3LC027886	SJAAJ2ZV9LC031506	SJAAJ2ZV9MC036125	SJAAJ2ZV8MC036827
SJAAJ2ZVXLC027366	SJAAJ2ZVXLC027898	SJAAJ2ZV6LC031513	SJAAJ2ZV4MC036131	SJAAJ2ZVXMC036831
SJAAJ2ZV5LC027372	SJAAJ2ZV8LC027902	SJAAJ2ZV9LC031540	SJAAJ2ZV1MC036135	SJAAJ2ZV8MC036844
SJAAJ2ZV4LC027380	SJAAJ2ZV9LC027908	SJAAJ2ZV3LC031548	SJAAJ2ZV5MC036140	SJAAJ2ZV6MC036891
SJAAJ2ZV6LC027395	SJAAJ2ZV0LC027912	SJAAJ2ZV2LC031556	SJAAJ2ZV2MC036144	SJAAJ2ZV4MC036954
SJAAJ2ZV3LC027404	SJAAJ2ZV8LC027916	SJAAJ2ZV8LC031576	SJAAJ2ZVXMC036148	SJAAJ2ZV7MC036978
SJAAJ2ZV9LC027424	SJAAJ2ZVXLC027920	SJAAJ2ZV8LC031609	SJAAJ2ZVXMC036151	SJAAJ2ZV6MC037006
SJAAJ2ZV7LC027454	SJAAJ2ZV0LC027926	SJAAJ2ZV8LC031674	SJAAJ2ZV5MC036154	SJAAJ2ZV2MC037021
SJAAJ2ZV4LC027458	SJAAJ2ZV2LC027930	SJAAJ2ZV3LC031677	SJAAJ2ZV0MC036157	SJAAJ2ZVXMC037042
SJAAJ2ZV6LC027462	SJAAJ2ZV1LC027935	SJAAJ2ZV5LC031728	SJAAJ2ZV3MC036167	SJAAJ2ZV5MC037045
SJAAJ2ZV3LC027466	SJAAJ2ZV9LC027942	SJAAJ2ZV9LC031733	SJAAJ2ZV5MC036171	SJAAJ2ZV2MC037066
SJAAJ2ZV5LC027470	SJAAJ2ZVXLC027948	SJAAJ2ZV4LC031820	SJAAJ2ZV2MC036175	SJAAJ2ZV0MC037129
SJAAJ2ZV2LC027541	SJAAJ2ZV0LC027957	SJAAJ2ZV0LC031829	SJAAJ2ZVXMC036179	SJAAJ2ZV0MC037132
SJAAJ2ZV6LC027588	SJAAJ2ZV8LC028774	SJAAJ2ZV7LC031844	SJAAJ2ZV1MC036183	SJAAJ2ZV2MC037181
SJAAJ2ZV3LC027614	SJAAJ2ZV7LC028829	SJAAJ2ZV6MC035921	SJAAJ2ZV2MC036192	SJAAJ2ZV3MC037223
SJAAJ2ZV3LC027628	SJAAJ2ZV7LC028832	SJAAJ2ZV9MC035993	SJAAJ2ZVXMC036196	SJAAJ2ZV8MC037282
SJAAJ2ZV4LC027640	SJAAJ2ZV3LC028844	SJAAJ2ZV6MC035997	SJAAJ2ZV8MC036200	SJAAJ2ZV9MC037291
SJAAJ2ZV8LC027656	SJAAJ2ZV0LC028848	SJAAJ2ZV2MC036001	SJAAJ2ZV5MC036204	SJAAJ2ZV1MC037298
SJAAJ2ZV1LC027661	SJAAJ2ZV5LC028859	SJAAJ2ZV5MC036008	SJAAJ2ZV2MC036208	SJAAJ2ZV9MC037419
SJAAJ2ZV9LC027679	SJAAJ2ZV4LC028867	SJAAJ2ZV9MC036013	SJAAJ2ZV7MC036222	SJAAJ2ZV9MC037629
SJAAJ2ZV1LC027689	SJAAJ2ZV8LC028886	SJAAJ2ZV8MC036018	SJAAJ2ZV6MC036227	SJAAJ2ZV1MC037642
SJAAJ2ZV0LC027702	SJAAJ2ZVXLC028890	SJAAJ2ZV1MC036023	SJAAJ2ZV0MC036241	SJAAJ2ZV6MC037863
SJAAJ2ZV2LC027717	SJAAJ2ZV5LC028926	SJAAJ2ZV0MC036028	SJAAJ2ZV6MC036244	SJAAJ2ZV4MC037943
SJAAJ2ZV4LC027721	SJAAJ2ZV2LC031167	SJAAJ2ZV2MC036032	SJAAJ2ZV5MC036283	SJAAJ2ZV4MC038025
SJAAJ2ZV5LC027730	SJAAJ2ZV5LC031177	SJAAJ2ZVXMC036036	SJAAJ2ZV9MC036349	SJAAJ2ZV9MC038036
SJAAJ2ZV8LC027740	SJAAJ2ZVXLC031224	SJAAJ2ZV1MC036040	SJAAJ2ZV9MC036545	SJAAJ2ZV9MC038098
SJAAJ2ZV4LC027749	SJAAJ2ZV9LC031232	SJAAJ2ZV9MC036044	SJAAJ2ZV1MC036555	SJAAJ2ZV6MC038513
SJAAJ2ZV5LC027758	SJAAJ2ZV1LC031239	SJAAJ2ZV6MC036048	SJAAJ2ZV7MC036558	SJAAJ2ZV1MC038774
SJAAJ2ZV8LC027768	SJAAJ2ZV8LC031271	SJAAJ2ZVXMC036053	SJAAJ2ZV7MC036561	SJAAJ2ZV4MC038834
SJAAJ2ZV1LC027773	SJAAJ2ZV5LC031275	SJAAJ2ZV7MC036057	SJAAJ2ZV1MC036569	SJAAJ2ZV8MC038867
SJAAJ2ZV0LC027778	SJAAJ2ZV6LC031284	SJAAJ2ZV9MC036061	SJAAJ2ZV3MC036590	SJAAJ2ZVXMC038899
SJAAJ2ZV8LC027785	SJAAJ2ZV1LC031287	SJAAJ2ZVXMC036067	SJAAJ2ZV3MC036606	SJAAJ2ZV7MC039380
SJAAJ2ZV1LC027790	SJAAJ2ZV2LC031296	SJAAJ2ZV2MC036077	SJAAJ2ZV2MC036631	SJAAJ2ZV4MC039398
SJAAJ2ZV6LC027798	SJAAJ2ZV4LC031297	SJAAJ2ZV6MC036082	SJAAJ2ZV7MC036656	
SJAAJ2ZV8LC027804	SJAAJ2ZVXLC031319	SJAAJ2ZV3MC036086	SJAAJ2ZV9MC036688	
SJAAJ2ZV5LC027811	SJAAJ2ZVXLC031322	SJAAJ2ZV5MC036090	SJAAJ2ZV7MC036706	
SJAAJ2ZV4LC027816	SJAAJ2ZV5LC031325	SJAAJ2ZV4MC036095	SJAAJ2ZV1MC036734	