



SIB 61 03 22

SERVICE ACTION: CHECK WIRING HARNESS CONNECTORS

2022-09-20

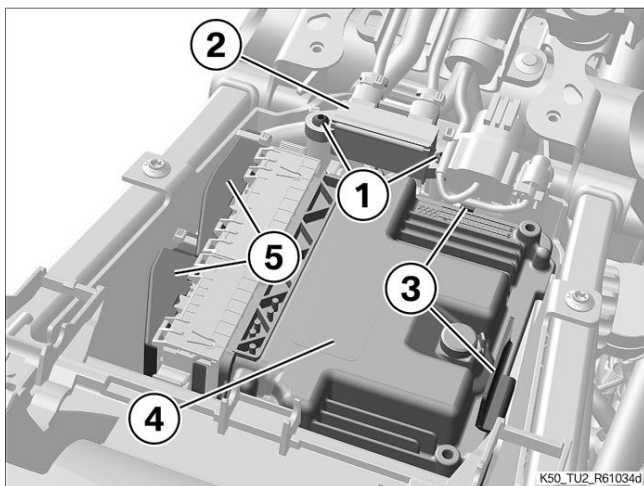
Model	Model Description	Production Date
K50	R 1250 GS	Apr. 21 – May 23, 2022
K51	R 1250 GS Adventure	Apr. 29 – May 23, 2022

The affected vehicles have been marked with campaign number **0061520000** in AIR.

In order to determine if a specific vehicle is affected by this campaign it will be necessary to verify the vehicle VIN in AIR (Aftersales Information Research). Based on the response of the system, either proceed with the repair or take no further action. Please note, open campaigns or vehicle stops may not appear in DCS Warranty Vehicle Inquiry or sales systems until 24-72 hours after they are announced, therefore AIR is always the recommended method for determining open campaigns and vehicle stops.

SITUATION

Wiring harnesses installed during assembly with individual pins, in both the large and small connections to the engine control unit (DME), were not manufactured correctly. This may cause faults in the engine control unit and subsequent engine run in emergency mode.



Engine control unit (DME) (4)

Connectors (5)

CORRECTION

For affected vehicles, the Service Action must be carried out before delivery to customers.

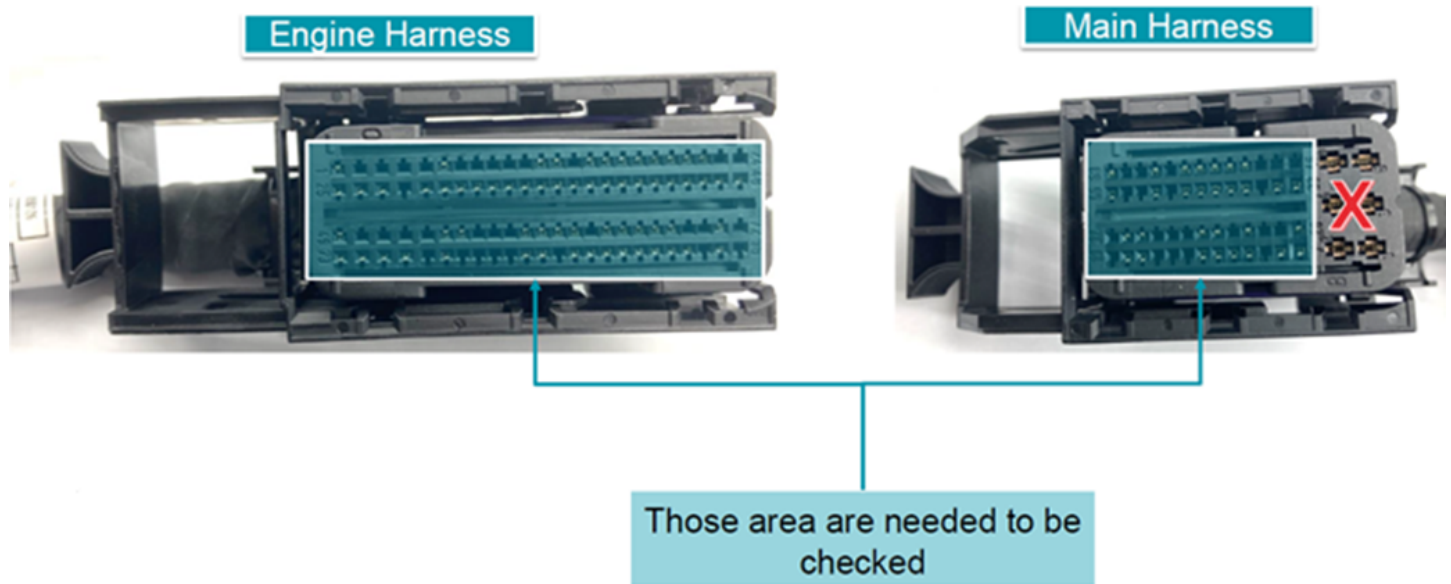
PROCEDURE

Both DME connectors for the main wiring harness and for the engine wiring harness will be checked.

NOTE: Service Managers; please have a level-3 technician perform this procedure. If no Level 3 tech is available or if the level 3 technician has questions, please create a TSARA case immediately so a TSARA Vision session can be started to oversee the technician performing the work to provide assistance or help when needed.

Attention

This is a highly sensitive part. Proceed with caution!

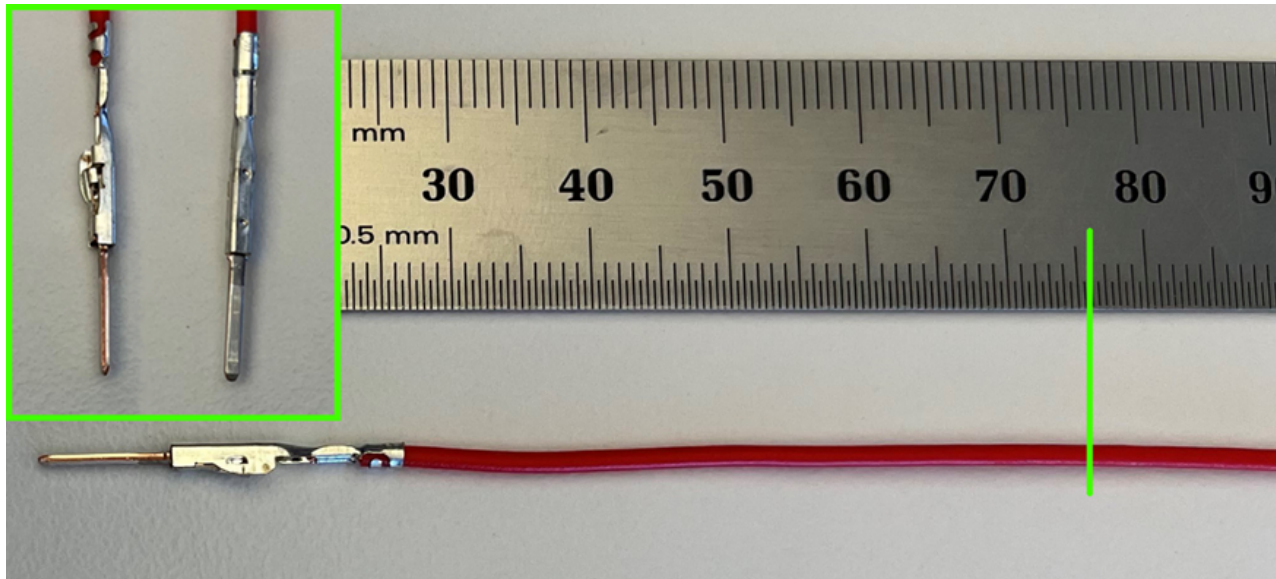


Preparation

- Verify the condition of the test pin, there should be no damage or signs of usage on the test pin.
- Verify the condition of the wire harness's, no dust and other obvious damage should be present.
- Verify the condition of the connectors, no dust, obstructions or obvious damage should be present.

Check

Hold the provided test pin with 2 fingers on the cable **approximately 3 inches (76 mm)** from the end of the pin. Make sure the **blade of the pin lines up with the Female side terminal** and gently put the test pin into terminal to verify the condition of the terminal.



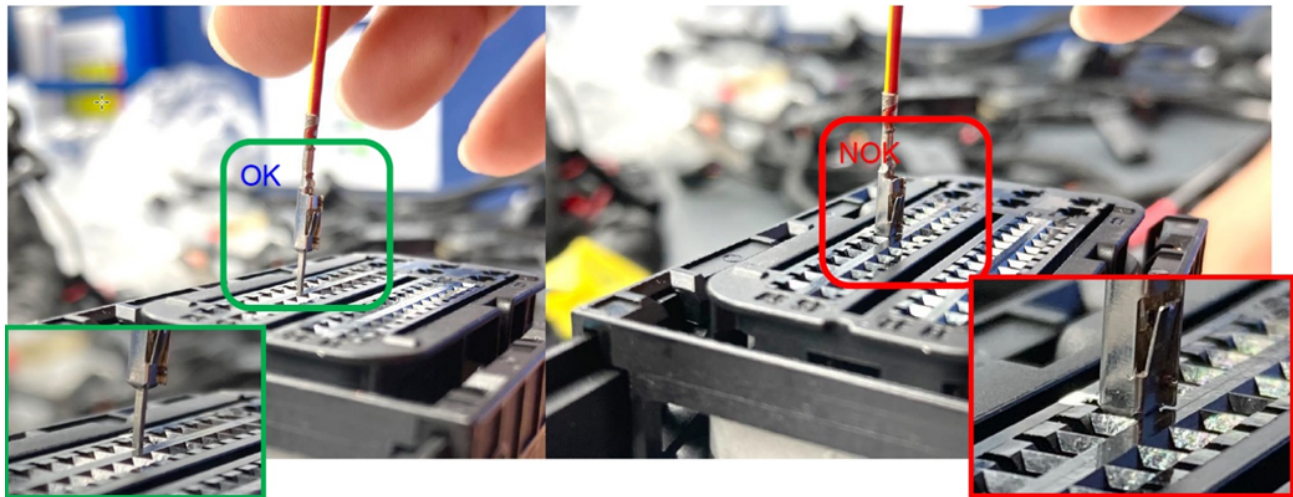
A **Good** terminal is when inserting the test pin into the terminal the pin stops and will not enter into the terminal without forcing it past the resistance/stop felt.

A **Defective** terminal is when inserting the test pin into the terminal without using any force to move past the natural resistance/stop of the terminal to the pin connection. Once a defective terminal/s is detected, it needs to be marked on the attached "Pin Record Sheet"..

Attention

Do not use force!

Do not push the pin inside! If you feel any resistance STOP!



Check Result

If a defective terminal (**NOT OK (NOK)**) is detected, please contact the Technical Support Via TSARA case with the Pin Record Sheet Attached to determine the required repair method.

PARTS INFORMATION

The test pins will be mailed via FedEx to the specific dealers that have affected bikes in their inventory.

CLAIM INFORMATION

Please submit claims via the normal claim process using the information below:

Defect code

00 61 52 00 00	Checking Wiring Harness Connections
----------------	-------------------------------------

Labor Operation

00 60 415	Checking Wiring Harness Connections	3 FRU
+00 60 915	Checking Wiring Harness Connections	2 FRU

FRUs includes all repair procedures to complete the task with allowance for necessary ancillary tasks (e.g., visual inspection, lubrication, cleaning parts etc.) and administrative tasks.

Labor operation code 00 60 415 is a Main labor operation. If you are using a Main labor code for another repair, use the Plus code labor operation instead.

QUESTIONS REGARDING THIS BULLETIN

Technical inquiries	Contact the BMW Technical Support Group via TSARA
Warranty inquiries	Submit an IDS ticket to the Warranty Department
Parts inquiries	Submit an IDS ticket to the Motorrad Parts Department

Supporting Materials

[picture_as_pdf PIN Sheet.pdf](#)

[picture_as_pdf 61 03 22 Checking wiring harness connectors V2.pdf](#)

Service Action 61 03 22 Checking Wiring Harness Connectors Pin Record Sheet.

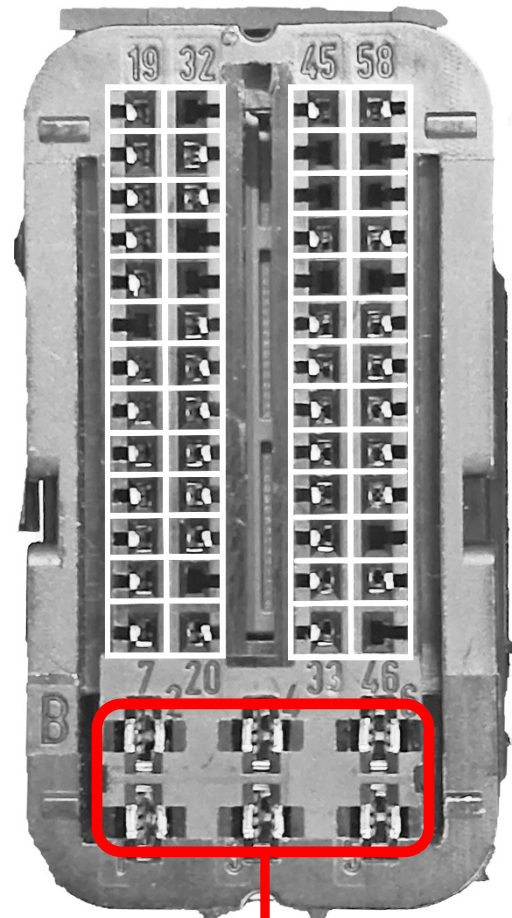
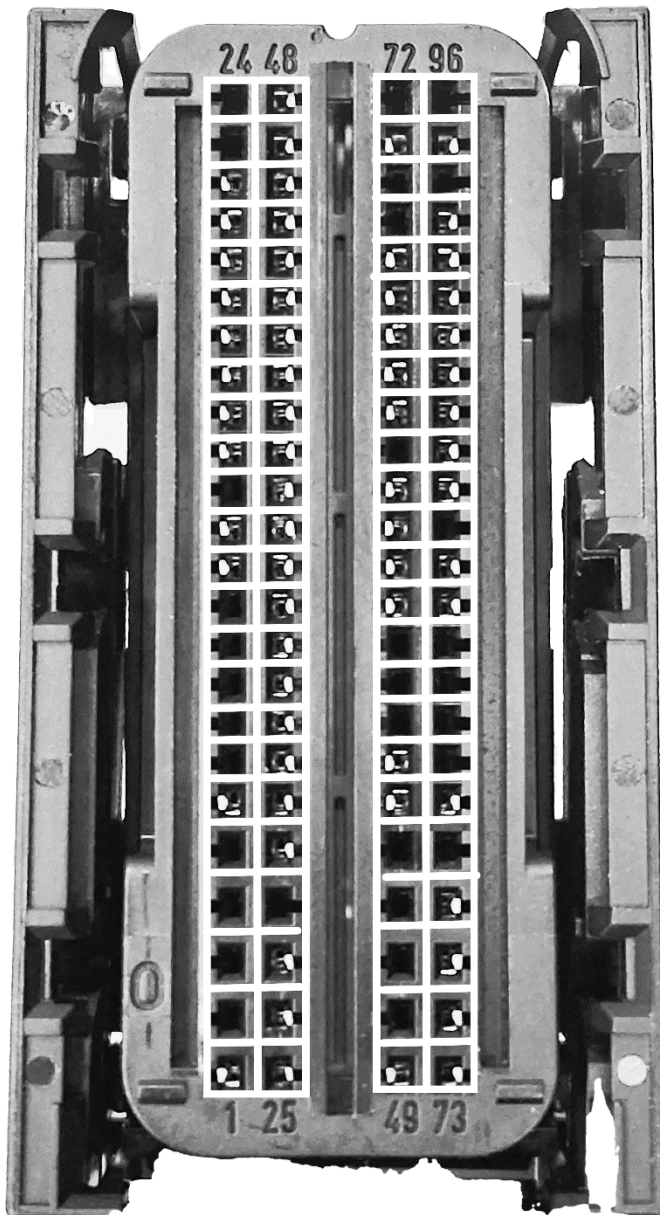
VIN: _____ Date of check: _____

Technicians Name: _____ Signature: _____

Was TSARA VISION utilized (circle one): Yes / No

Use a permanent marker to fill in any pin that does not pass the pin testing procedure.

NOTE: This is needed even if no pin/s are faulty for any Audit process in the future. If this is not filled out correctly it could result in a debit of the claim for this procedure. Please save a copy for the vehicle file.



**Do not test
these big pins**

Service Information Bulletin

General Electrical Systems

Sept 19, 2022

61 03 22

SERVICE ACTION: CHECK WIRING HARNESS CONNECTORS



**BMW
MOTORRAD**

MODEL

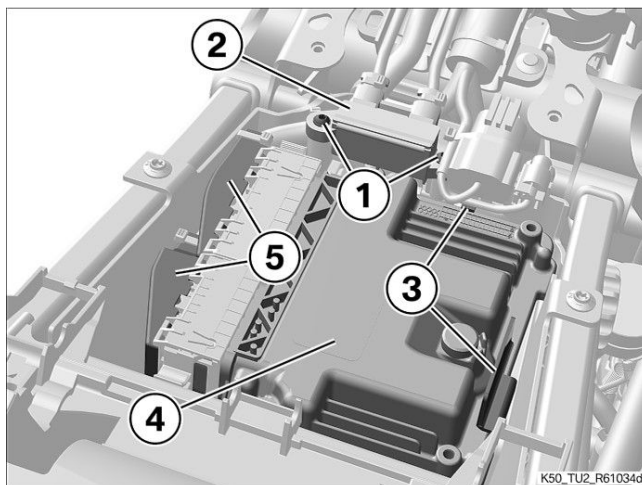
Model	Model Description	Production Date
K50	R 1250 GS	Apr. 21 – May 23, 2022
K51	R 1250 GS Adventure	Apr. 29 – May 23, 2022

The affected vehicles have been marked with campaign number **0061520000** in AIR.

In order to determine if a specific vehicle is affected by this campaign it will be necessary to verify the vehicle VIN in AIR (Aftersales Information Research). Based on the response of the system, either proceed with the repair or take no further action. Please note, open campaigns or vehicle stops may not appear in DCS Warranty Vehicle Inquiry or sales systems until 24-72 hours after they are announced, therefore AIR is always the recommended method for determining open campaigns and vehicle stops.

SITUATION

Wiring harnesses installed during assembly with individual pins, in both the large and small connections to the engine control unit (DME), were not manufactured correctly. This may cause faults in the engine control unit and subsequent engine run in emergency mode.



Engine control unit (DME) (4)

Connectors (5)

CORRECTION

For affected vehicles, the Service Action must be carried out before delivery to customers.

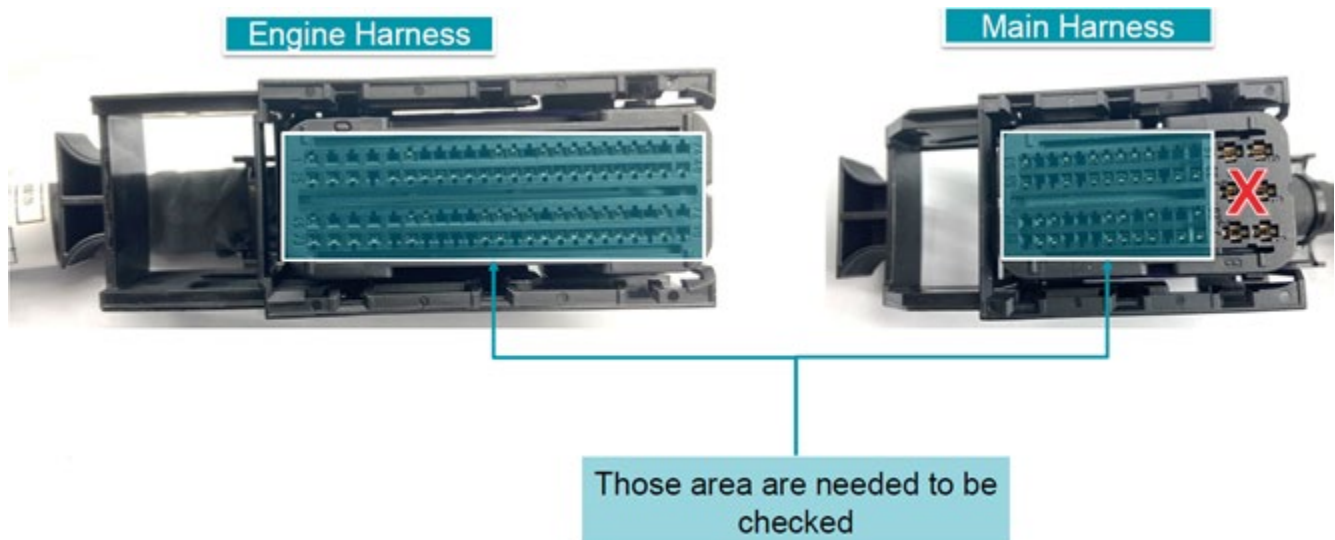
PROCEDURE

Both DME connectors for the main wiring harness and for the engine wiring harness will be checked.

NOTE: Service Managers; please have a level-3 technician perform this procedure. If no Level 3 tech is available or if the level 3 technician has questions, please create a TSARA case immediately so a TSARA Vision session can be started to oversee the technician performing the work to provide assistance or help when needed.

ATTENTION

This is a highly sensitive part. Proceed with caution!

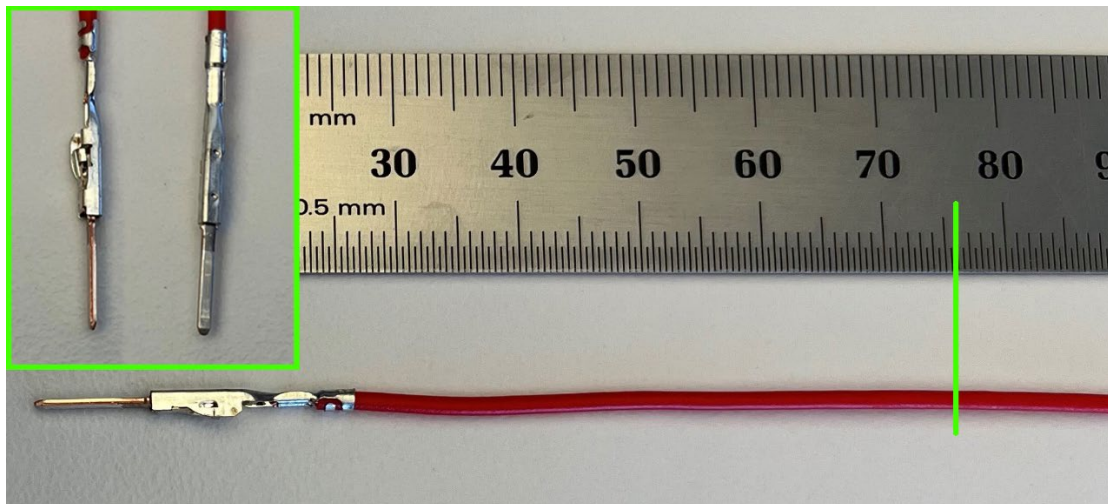


Preparation

- Verify the condition of the test pin, there should be no damage or signs of usage on the test pin.
- Verify the condition of the wire harness's, no dust and other obvious damage should be present.
- Verify the condition of the connectors, no dust, obstructions or obvious damage should be present.

Check

Hold the provided test pin with 2 fingers on the cable **approximately 3 inches (76 mm)** from the end of the pin. Make sure the **blade of the pin lines up with the Female side terminal** and gently put the test pin into terminal to verify the condition of the terminal.



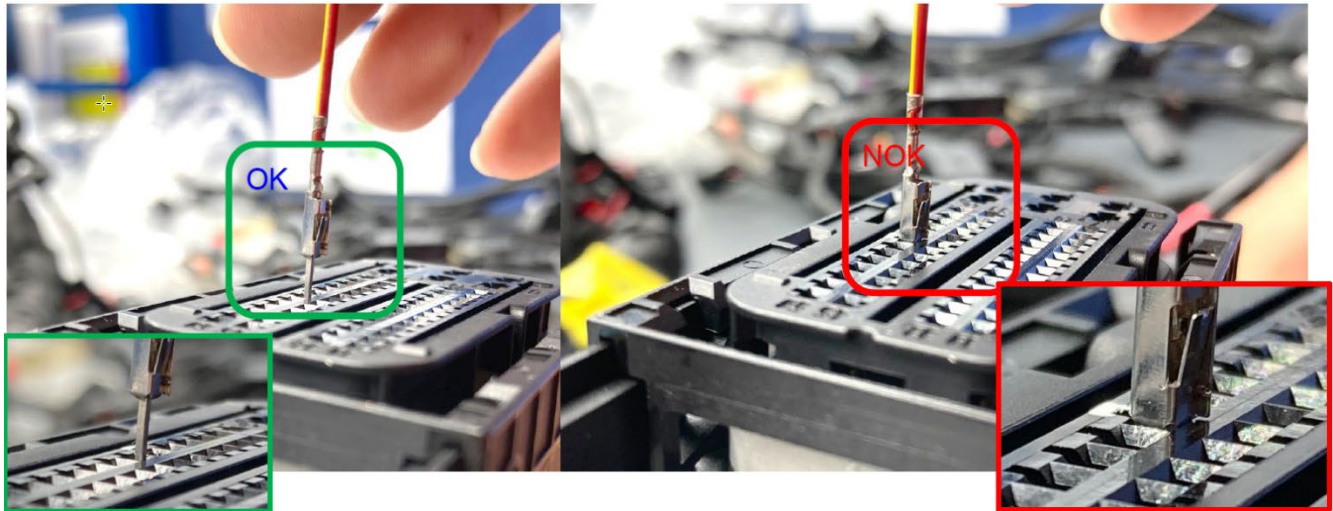
A **Good** terminal is when inserting the test pin into the terminal the pin stops and will not enter into the terminal without forcing it past the resistance/stop felt.

A **Defective** terminal is when inserting the test pin into the terminal without using any force to move past the natural resistance/stop of the terminal to the pin connection. Once a defective terminal/s is detected, it needs to be marked on the attached “Pin Record Sheet”..

ATTENTION

Do not use force!

Do not push the pin inside! If you feel any resistance STOP!



Check Result

If a defective terminal (**NOT OK (NOK)**) is detected, please contact the Technical Support Via TSARA case with the Pin Record Sheet Attached to determine the required repair method.

PARTS INFORMATION

The test pins will be mailed via FedEx to the specific dealers that have affected bikes in their inventory.

CLAIM INFORMATION

Please submit claims via the normal claim process using the information below:

Defect code

00 61 52 00 00	Checking Wiring Harness Connections
----------------	-------------------------------------

Labor Operation

00 60 415	Checking Wiring Harness Connections	3 FRU
+00 60 915	Checking Wiring Harness Connections	2 FRU

FRUs includes all repair procedures to complete the task with allowance for necessary ancillary tasks (e.g., visual inspection, lubrication, cleaning parts etc.) and administrative tasks.

Labor operation code 00 60 415 is a Main labor operation. If you are using a Main labor code for another repair, use the Plus code labor operation instead.

QUESTIONS REGARDING THIS BULLETIN

Technical inquiries	Contact the BMW Technical Support Group via TSARA
Warranty inquiries	Submit an IDS ticket to the Warranty Department
Parts inquiries	Submit an IDS ticket to the Motorrad Parts Department