

MARINE

THIS DOCUMENT IS FOR INTERNAL USE ONLY! DO NOT DISTRIBUTE!

The attached letter has been sent by Lippert Components, Inc. to all affected OEMs. This document is for internal informational purposes only and is not to be distributed in any manner.

October 24, 2022

Product Change Notice - Glazed welded marine windshields switch to single bead

Dear Valued Customer:

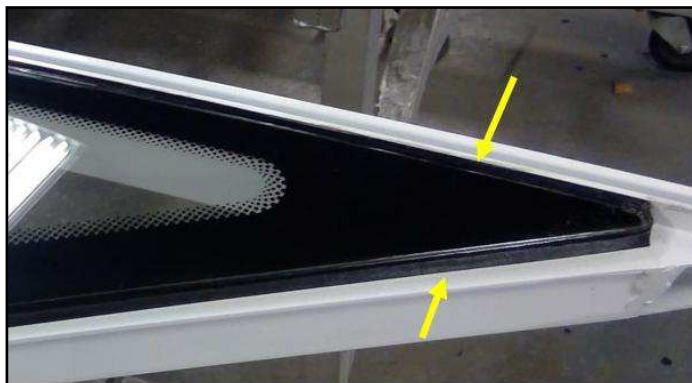
Please be advised, plant 110 glazed welded marine windshields have been switched to a single glazing bead between the glass and frame.

The second bead, also known as a back bead, has been eliminated to increase production throughput and to improve the quality of aesthetics in our glazed welded products.

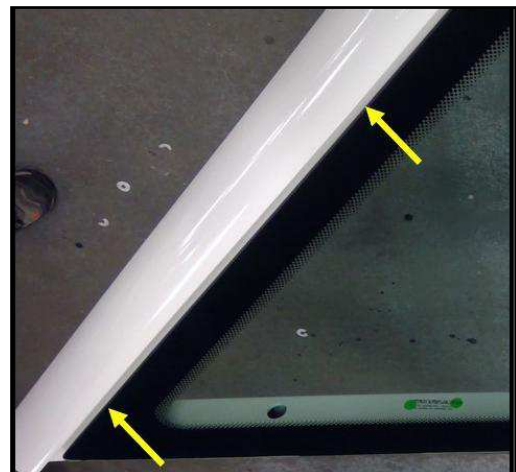
Product monitoring has shown the single bead to be as effective or better than adding two beads.

There is no change in product installation or operation with the single glazing bead.

There is no price change and no part number change. The change has been made on a running basis.



Previous - Double bead (back bead)



New - Single bead

If you have any questions, please feel free to call me directly or your Lippert representative. We value and appreciate your business and partnership.

Sincerely,

Mike Oathout

Director of Marine Sales

Lippert

moathout@lci1.com

Frequently Asked Questions:

- 1. Will a new part number be required?** No, there is no new part number.
- 2. Does the price change for the item?** No, there is no price change.
- 3. Is the new part wholly interchangeable with the previous version of the part?** Yes, the parts are interchangeable with one or two beads.
- 4. Does the customer need to replace inventory?** No, the change took place on a running basis.