

WMP4 – Affixing Label on the Infrastructure Charging Cable (Porsche Mobile Charger) (Workshop Campaign)

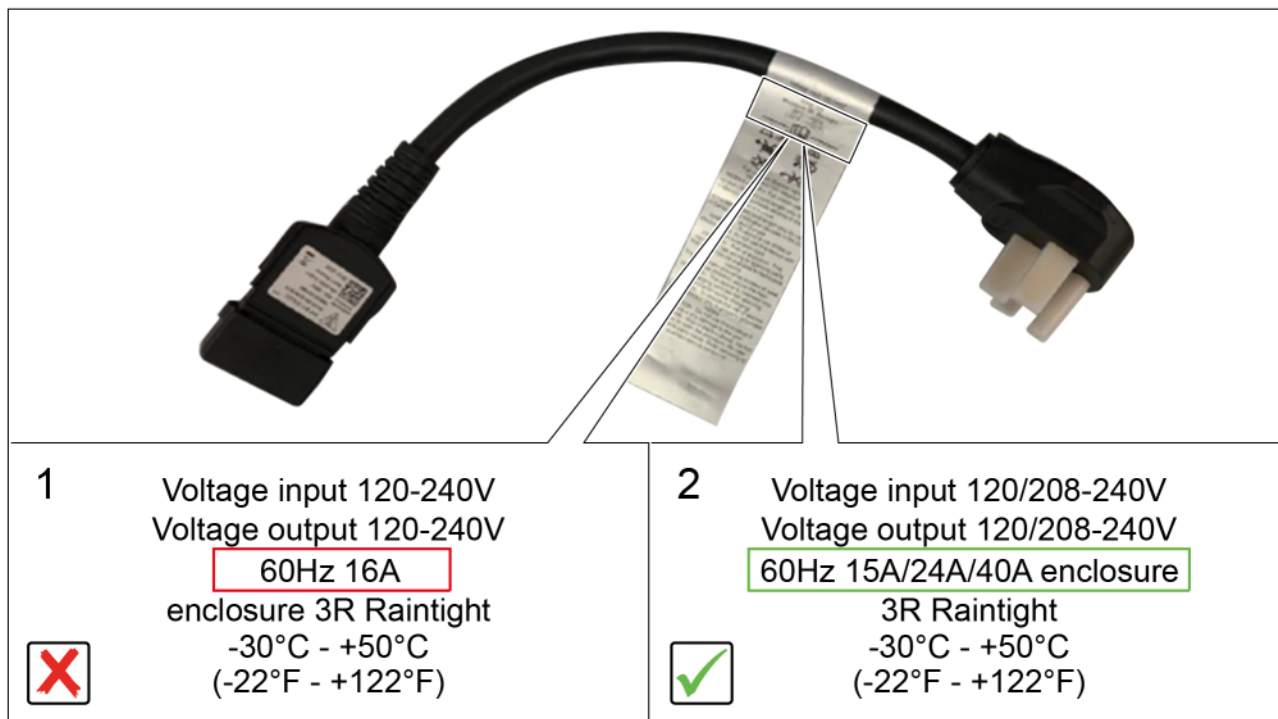
Vehicle Type: **Taycan (Y1A / Y1B / Y1C)
Cayenne S E-Hybrid (92A)
Cayenne E-Hybrid (9YA / 9YB)/Cayenne Turbo S E-Hybrid (9YA / 9YB)
Panamera 4 E-Hybrid (971) / Panamera Turbo S E-Hybrid (971)**

Model Year: **As of 2015 up to 2022**

Concerns: **NEMA infrastructure charging cable**

Information: **Infrastructure charging cables for the charging electronics (Porsche Mobile Charger / Porsche Universal Charger) on which the information on a label on the maximum charging current does not meet the required specifications were supplied with the affected vehicles. The maximum charging current specified on the label is lower (16 A) than the charging current (40 A) that was actually approved for the infrastructure charging cable.**

Action required: **Affix a label showing the correct values over the existing label. ⇒ NEMA infrastructure charging cable label**



NEMA infrastructure charging cable label

1 – Current and incorrect information about the maximum charging current

2 – New and correct information on maximum charging current

**Information**

The infrastructure charging cable additionally purchased from the customer for the vehicle must also be reworked accordingly.

To do this, affix the label over on the infrastructure charging cable in accordance with the Technical Information for campaign WMP4 (155 / 22).

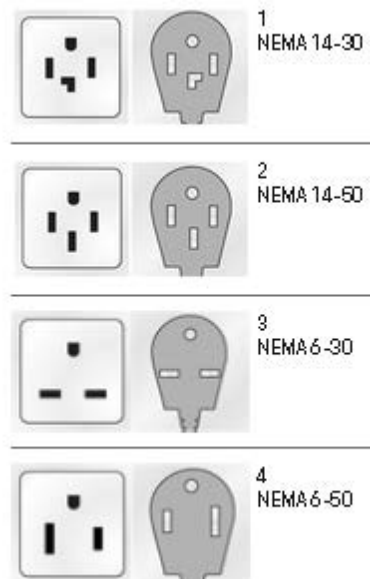
The labor costs thereby incurred and the additional parts required must then be invoiced using a **reimbursement claim** for the original campaign claim for this campaign.

In this case, a **picture documentation** is essential, and the corresponding **invoice for the second infrastructure charging cable must be attached to the campaign claim**.

Affected
Vehicles:

Only vehicles assigned to the campaign (see also PCSS Vehicle Information).

Overview
of Charging
Cable:



Overview of NEMA infrastructure charging cable

Overview
of Charging
Electronics:



Porsche Universal Charger



*Porsche Mobile Charger (basic) / Porsche
Mobile Charger Plus*



Porsche Mobile Charger Connect

Required parts and materials

Parts Info: **Required parts:**

Part No.	Designation - Location	Number
V04015001FQ	⇒ Warning sign - Porsche Universal Charger	1 piece
or		
V04015001FP	⇒ Warning sign - Porsche Mobile Charger (Basis, Plus, Connect)	1 piece

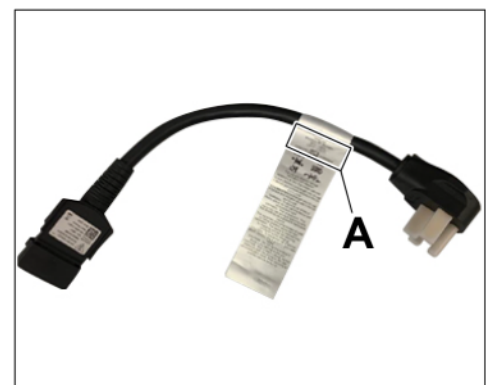
Materials: **Required materials** (usually already available at the Porsche dealer):

Part No.	Designation	Number
D 00940104	⇒ Cleaning solution or alternative (commercially available)	250 ml/ 8.45 fl oz container (approx. 25 ml/ 0.85 fl oz required per vehicle)*

*For warranty processing, the cleaning solution can optionally be invoiced as an **additional part** under the part number **WMP40000001** with the "expendable items" designation costing \$1.25 in the warranty claim.

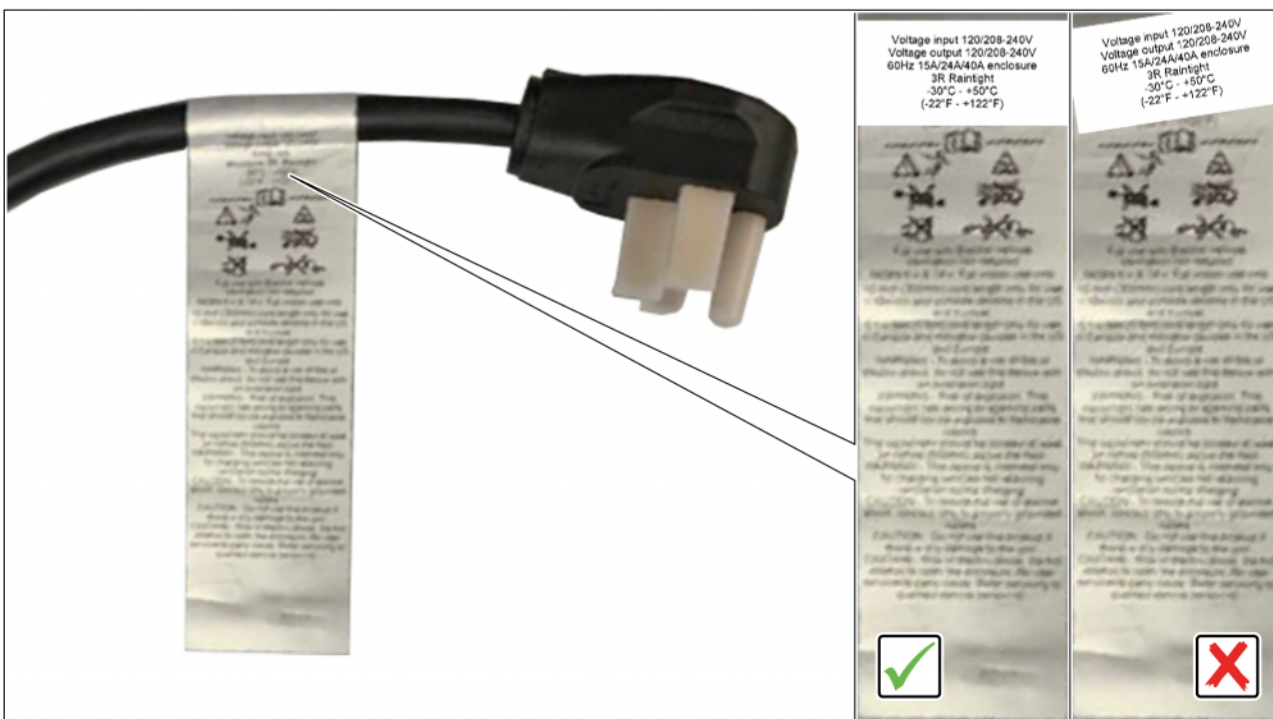
Affixing label over infrastructure charging cable

- Work procedure: 1 Remove charging electronics (Porsche Mobile Charger / Porsche Universal Charger), including infrastructure charging cable, from the vehicle.
- 2 Clean the label on the infrastructure charging cable in the bonding area ⇒ *Bonding area -A-* using an odor-neutral cleaning agent with material compatibility (e.g. D 00940104).
- 3 Dry off the surface with a clean, lint-free cloth or leave it to dry off for a sufficient length of time.
- 4 Position the new label at the middle of the bonding area, and press firmly. ⇒ *Bonding position*
Check the following while doing this:



Bonding area

Charging electronics	Part number
Porsche Universal Charger	V04015001 FQ
Porsche mobile charger	V04015001 FP



Bonding position

- 5 Put charging electronics (Porsche Mobile Charger / Porsche Universal Charger), including infrastructure charging cable, in the vehicle.
- 6 Enter the campaign in the Warranty and Maintenance booklet.

Warranty processing

Scope 1: **Affixing label on infrastructure charging cable (Porsche Universal Charger)**

Labor time:		
Affixing label on infrastructure charging cable (Porsche Universal Charger)		Labor time: 31 TU
Includes: Cleaning label		
Parts required:		
V04015001FQ	Warning sign	1 piece
Required materials (usually already available at the Porsche dealer):		
D 00940104	Cleaning solution	0.1 piece
or		
WMP40000001*	Expendable items	0.1 piece

* For warranty processing, enter the Part No. **WMP40000001** with the "expendable items" designation as **an additional part** costing \$1.25 in the warranty claim.

⇒ **Damage code WMP4 066 000 1**

Scope 2:

Affixing label over infrastructure charging cable (Porsche Mobile Charger)

Labor time:

Affixing label over infrastructure charging cable (Porsche Mobile Charger) Labor time: **31 TU**
Includes: Cleaning label

Parts required:

V04015001FP Warning sign 1 piece

Required materials (usually already available at the Porsche dealer):

D 00940104 Cleaning solution 0.1 piece

or

WMP40000001* Expendable items 0.1 piece

*For warranty processing, enter the Part No. **WMP40000001** with the 'expendable items' designation as an **additional part** costing \$1.25 in the warranty claim.

⇒ **Damage code WMP4 066 000 1**

Important Notice: Technical Bulletins issued by Porsche Cars North America, Inc. are intended only for use by professional automotive technicians who have attended Porsche service training courses. They are written to inform those technicians of conditions that may occur on some Porsche vehicles, or to provide information that could assist in the proper servicing of a vehicle. Porsche special tools may be necessary in order to perform certain operations identified in these bulletins. Use of tools and procedures other than those Porsche recommends in these bulletins may be detrimental to the safe operation of your vehicle, and may endanger the people working on it. Properly trained Porsche technicians have the equipment, tools, safety instructions, and know-how to do the job properly and safely. Part numbers listed in these bulletins are for reference only. The work procedures updated electronically in the Porsche PIWIS diagnostic and testing device take precedence and, in the event of a discrepancy, the work procedures in the PIWIS Tester are the ones that must be followed.

© 2022 Porsche Cars North America, Inc.