



STAR ONLINE PUBLICATION

Case Number: S1508000380

Release Date: 07/16/2020

Symptom/Vehicle Issue:

Keys/Fobiks, Programming Keys With Base Vehicle BCM (L2 BCM)

Discussion:

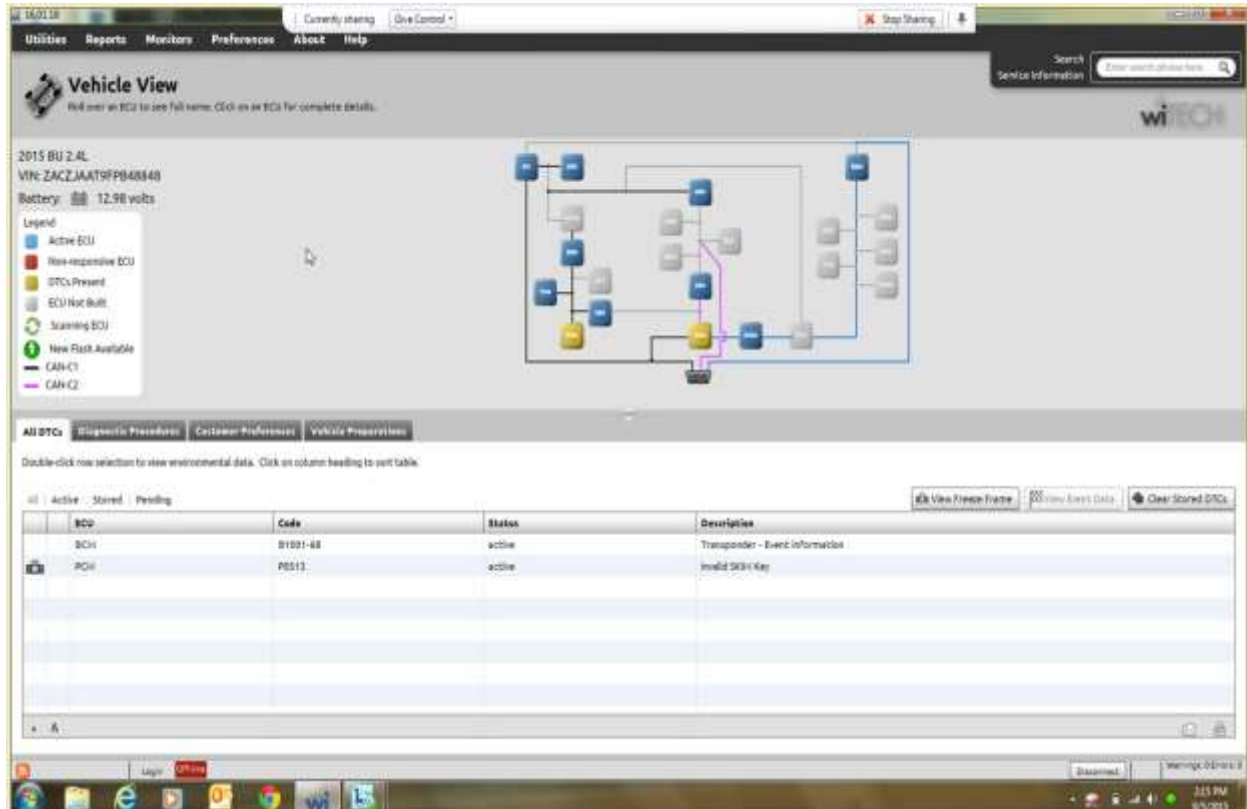
There are two methods for programming keys, if the vehicle is NOT equipped with Keyless Go, programming is done through the BCM. The below process is for base vehicle without keyless go. Keyless go programming is done through the RFHUB.

- Base vehicle (L2 BCM)
- Blade keys
- 5 Keys programmed in this example
- 1 key disabled in this example

This document does not authorize warranty repairs. This communication documents a record of past experiences. STAR Center Online does not provide any conclusions about what is wrong with the vehicle. Rather, it captures all previous cases known that appear to be similar or related to the vehicle symptom / condition. You are the expert, and you are responsible for deciding on the appropriate course of action.

Contact STAR Center, or your Technical Assistance Center Via ECCI or eCONTACT ticket if no solution is found

STAR ONLINE PUBLICATION

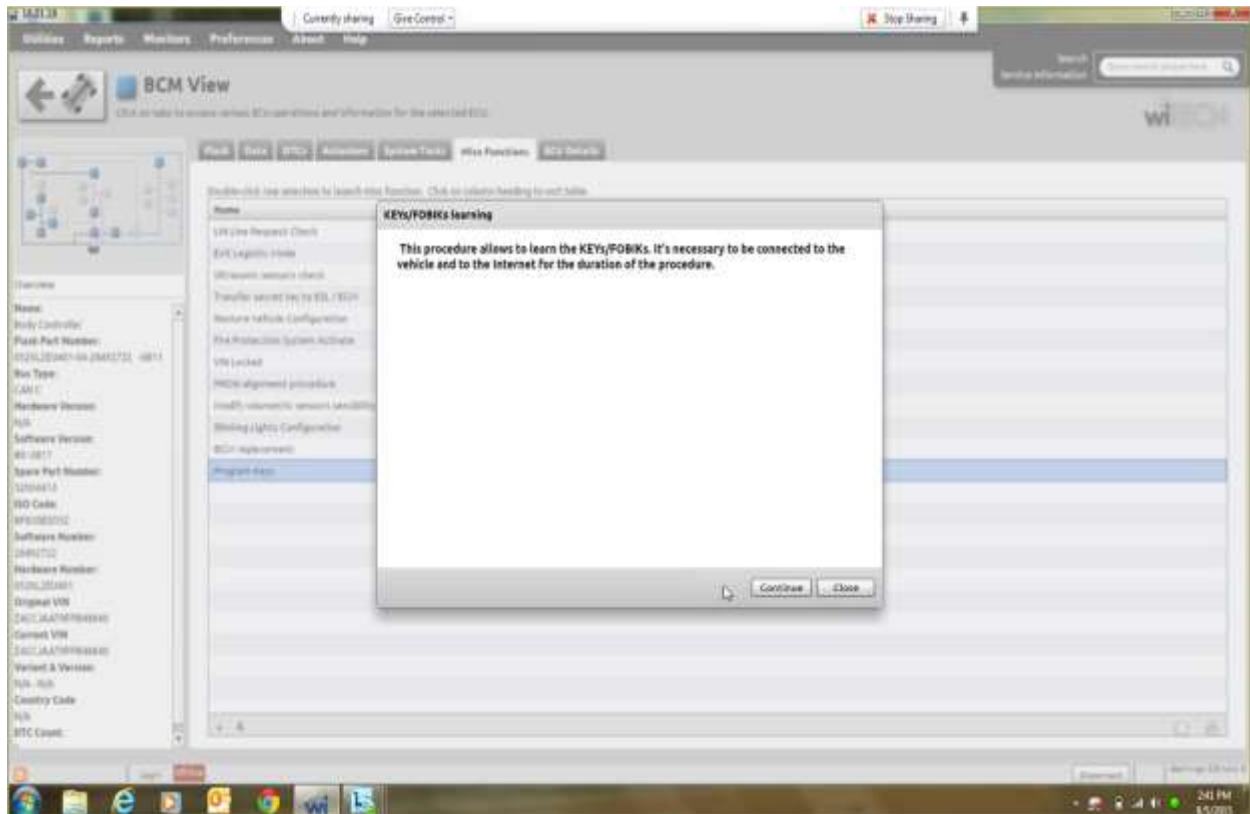


1. From BCM, Misc. Functions Tab, select Program Keys. Be sure to have the correct vehicle PIN and ALL the keys you intend to program available prior to continuing.

This document does not authorize warranty repairs. This communication documents a record of past experiences. STAR Center Online does not provide any conclusions about what is wrong with the vehicle. Rather, it captures all previous cases known that appear to be similar or related to the vehicle symptom / condition. You are the expert, and you are responsible for deciding on the appropriate course of action.

Contact STAR Center, or your Technical Assistance Center Via ECCI or eCONTACT ticket if no solution is found

STAR ONLINE PUBLICATION

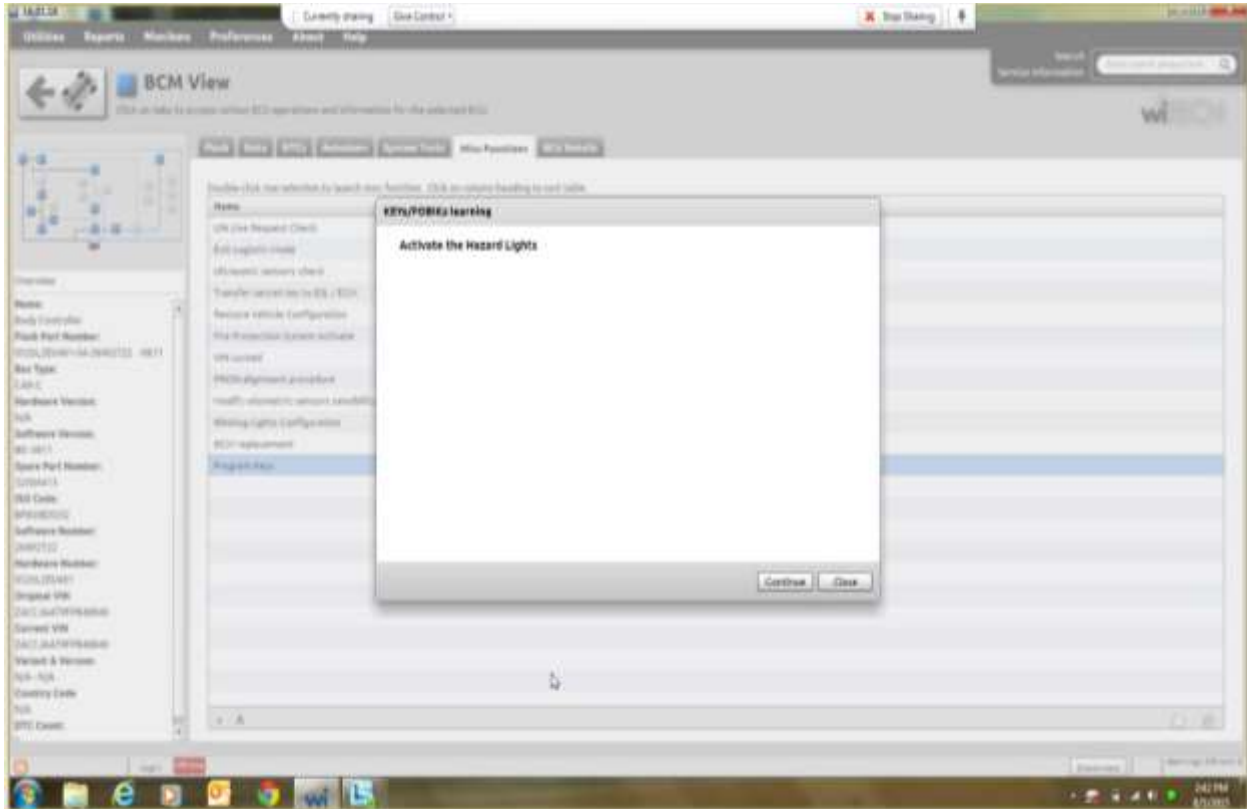


2. Always press Continue until the very last screen when Close is the only option.

This document does not authorize warranty repairs. This communication documents a record of past experiences. STAR Center Online does not provide any conclusions about what is wrong with the vehicle. Rather, it captures all previous cases known that appear to be similar or related to the vehicle symptom / condition. You are the expert, and you are responsible for deciding on the appropriate course of action.

Contact STAR Center, or your Technical Assistance Center Via ECCI or eCONTACT ticket if no solution is found

STAR ONLINE PUBLICATION

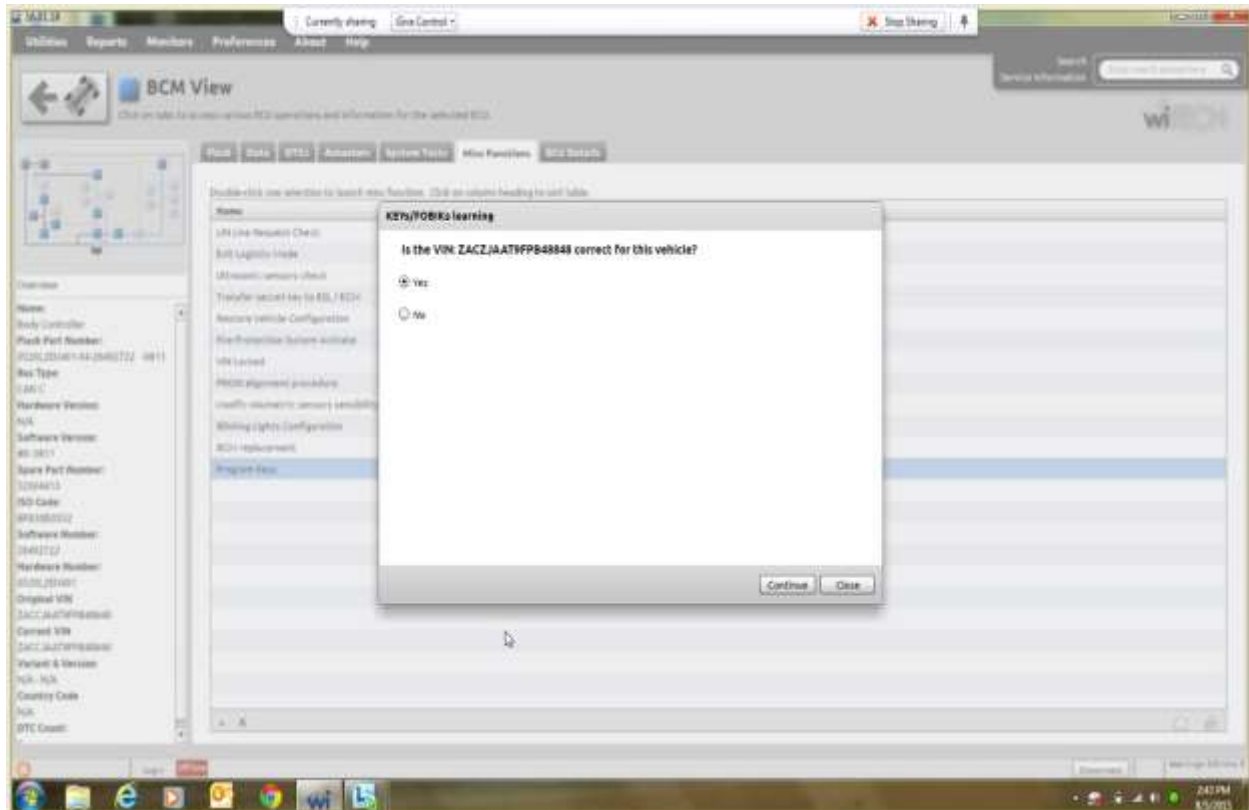


3. This keeps the BCM from going to sleep between steps.

This document does not authorize warranty repairs. This communication documents a record of past experiences. STAR Center Online does not provide any conclusions about what is wrong with the vehicle. Rather, it captures all previous cases known that appear to be similar or related to the vehicle symptom / condition. You are the expert, and you are responsible for deciding on the appropriate course of action.

Contact STAR Center, or your Technical Assistance Center Via ECCI or eCONTACT ticket if no solution is found

STAR ONLINE PUBLICATION

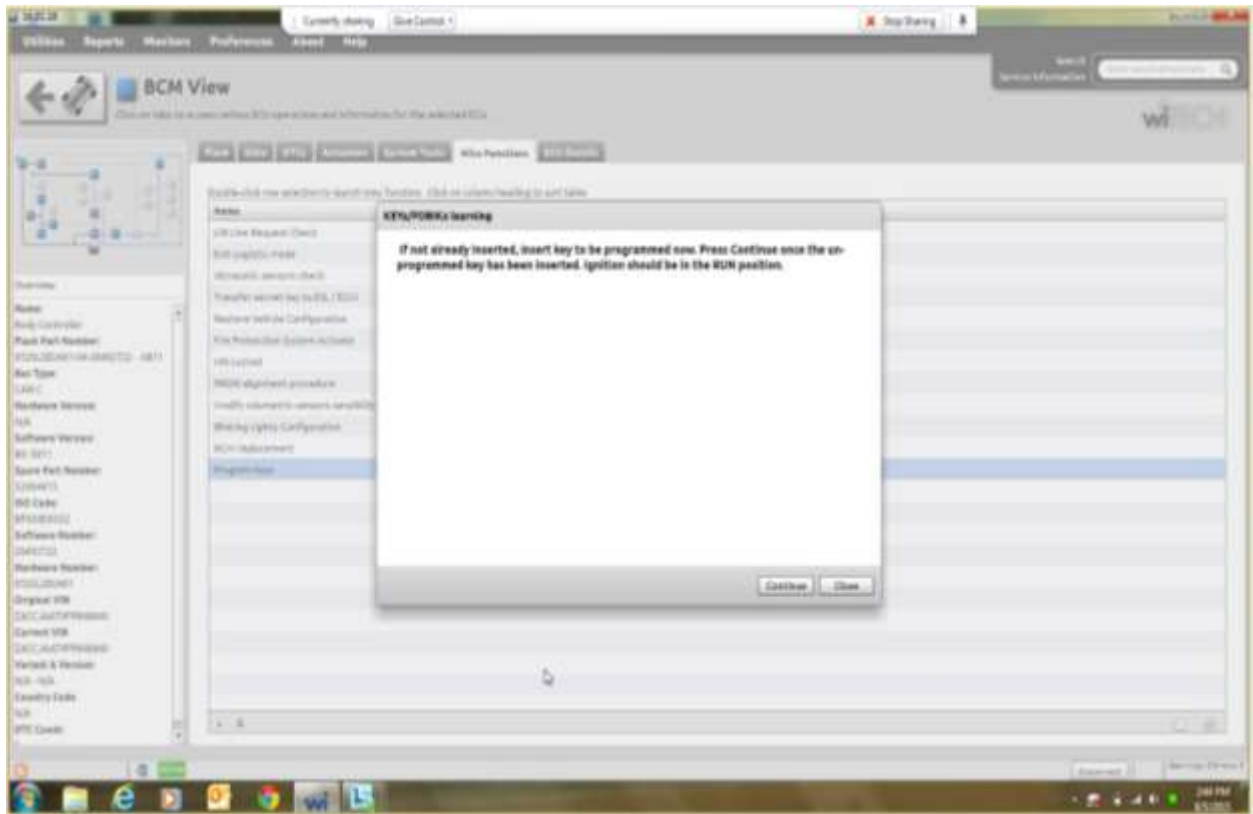


4. Press continue if VIN is correct.
5. Enter PIN.
6. Press continue.
7. Please wait until connected to Body Computer, no action is required.

This document does not authorize warranty repairs. This communication documents a record of past experiences. STAR Center Online does not provide any conclusions about what is wrong with the vehicle. Rather, it captures all previous cases known that appear to be similar or related to the vehicle symptom / condition. You are the expert, and you are responsible for deciding on the appropriate course of action.

Contact STAR Center, or your Technical Assistance Center Via ECCI or eCONTACT ticket if no solution is found

STAR ONLINE PUBLICATION

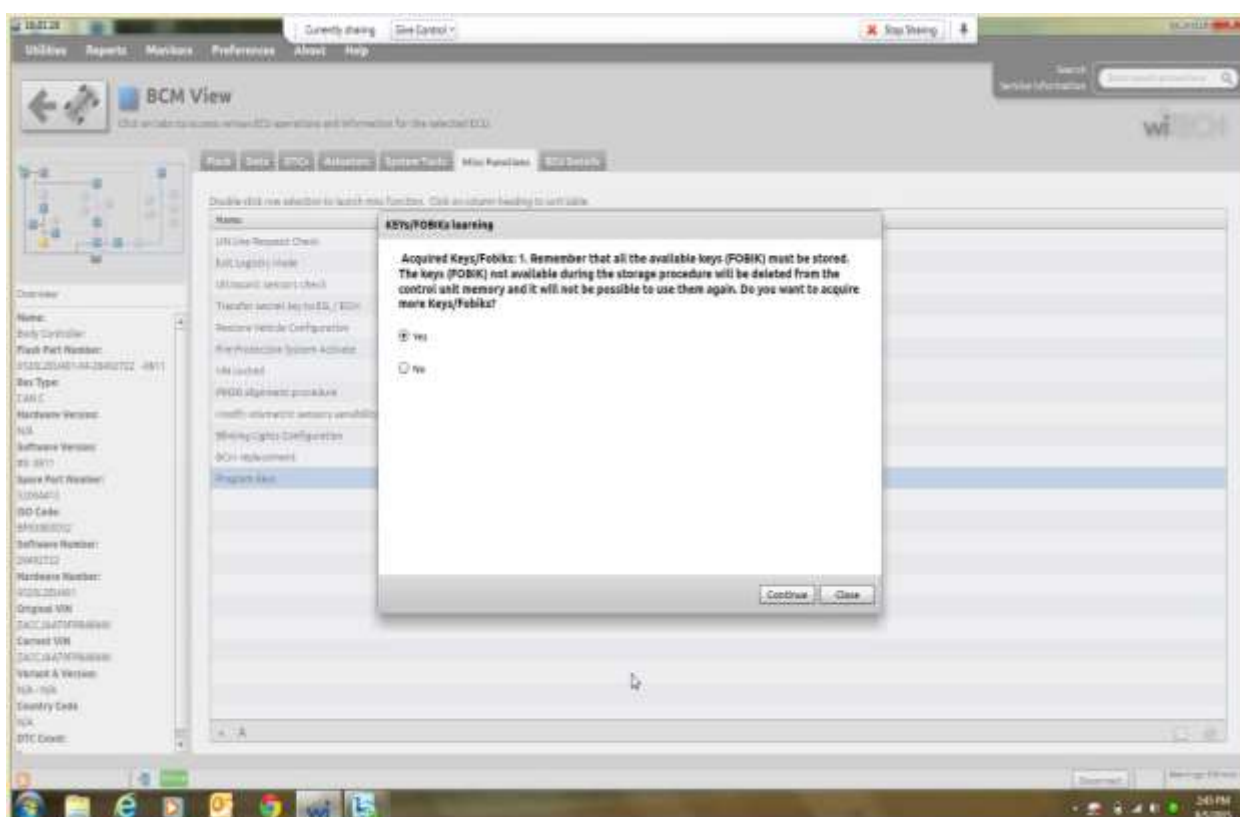


8. Since the first key to be programmed is already in the ignition and in the RUN position, press Continue now to include it in the programming.
9. Please wait.

This document does not authorize warranty repairs. This communication documents a record of past experiences. STAR Center Online does not provide any conclusions about what is wrong with the vehicle. Rather, it captures all previous cases known that appear to be similar or related to the vehicle symptom / condition. You are the expert, and you are responsible for deciding on the appropriate course of action.

Contact STAR Center, or your Technical Assistance Center Via ECCI or eCONTACT ticket if no solution is found

STAR ONLINE PUBLICATION

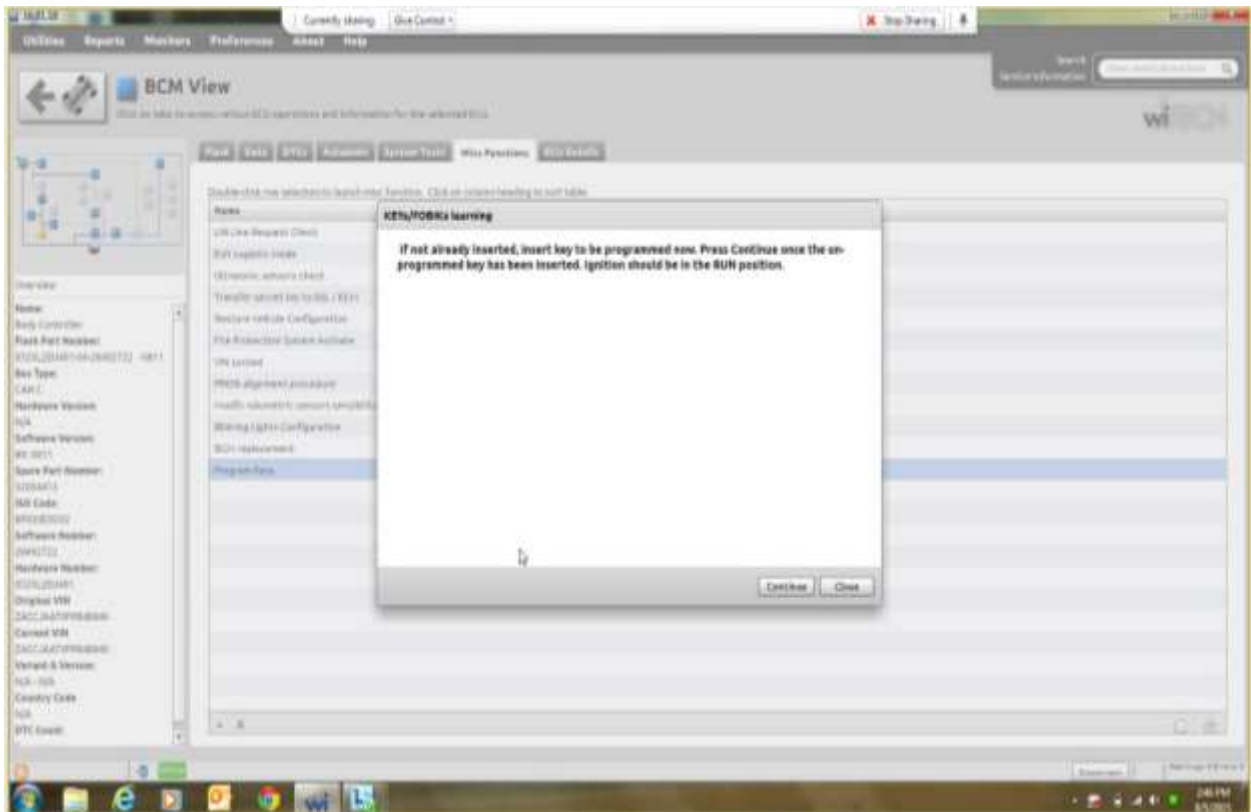


10. **Note:** that Acquired Keys/Fobiks now shows “1”. This indicates the first key has been added to the list of keys to be programmed.

This document does not authorize warranty repairs. This communication documents a record of past experiences. STAR Center Online does not provide any conclusions about what is wrong with the vehicle. Rather, it captures all previous cases known that appear to be similar or related to the vehicle symptom / condition. You are the expert, and you are responsible for deciding on the appropriate course of action.

Contact STAR Center, or your Technical Assistance Center Via ECCI or eCONTACT ticket if no solution is found

STAR ONLINE PUBLICATION

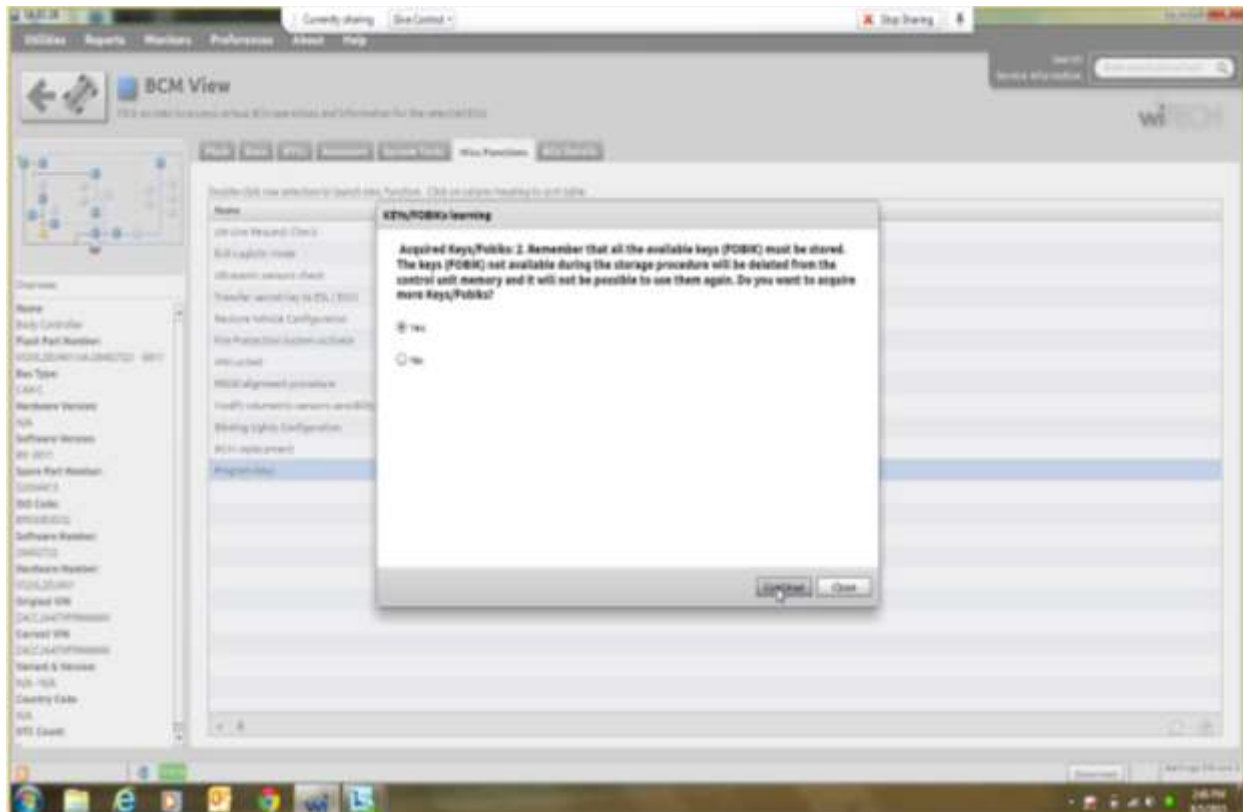


11. You are now prompted to insert the next Key/Fobik to be learned and Press Continue.
12. Please wait no action is required.

This document does not authorize warranty repairs. This communication documents a record of past experiences. STAR Center Online does not provide any conclusions about what is wrong with the vehicle. Rather, it captures all previous cases known that appear to be similar or related to the vehicle symptom / condition. You are the expert, and you are responsible for deciding on the appropriate course of action.

Contact STAR Center, or your Technical Assistance Center Via ECCI or eCONTACT ticket if no solution is found

STAR ONLINE PUBLICATION

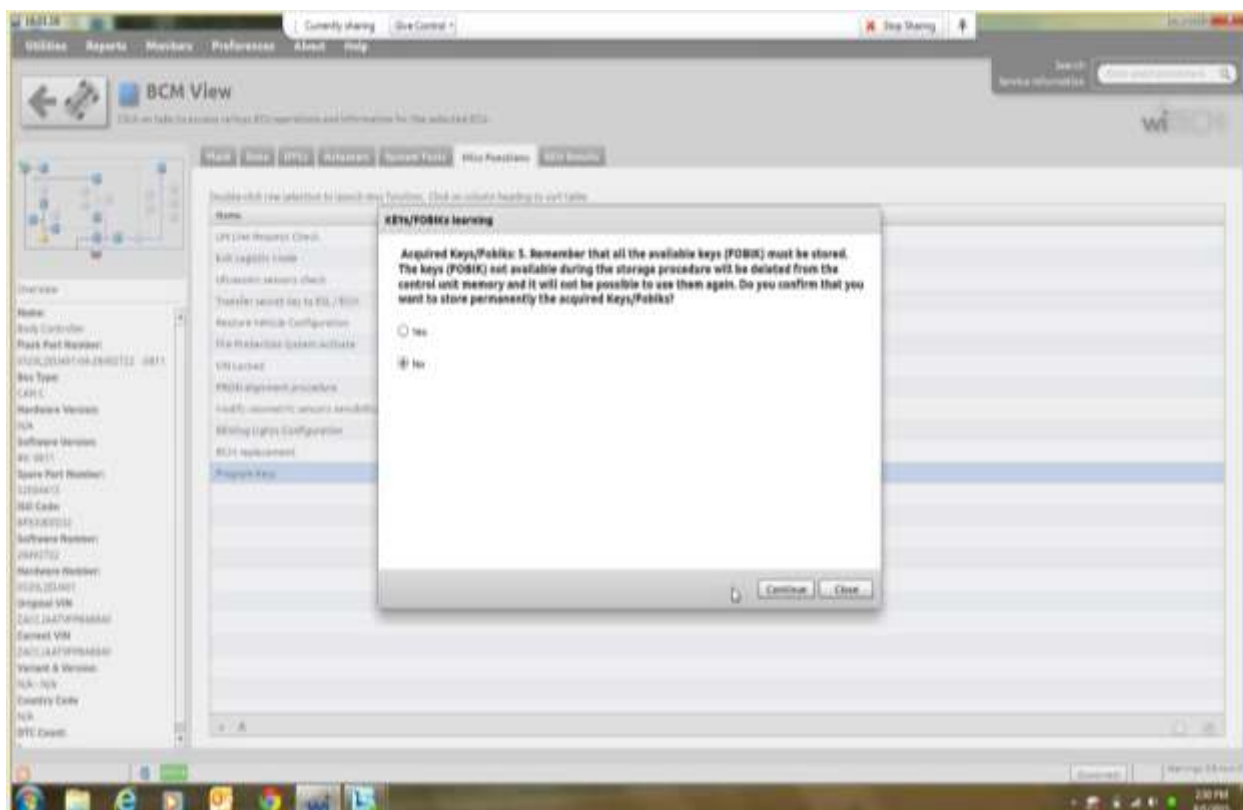


13. Note that Acquired Keys/Fobiks now shows "2".
14. To program additional keys press continue.
15. Follow screen instructions and insert additional key.
16. Press Continue.
17. Follow the screen instructions until all keys have been programmed.
18. Select "NO" when all keys have been programmed.
19. Press continue.

This document does not authorize warranty repairs. This communication documents a record of past experiences. STAR Center Online does not provide any conclusions about what is wrong with the vehicle. Rather, it captures all previous cases known that appear to be similar or related to the vehicle symptom / condition. You are the expert, and you are responsible for deciding on the appropriate course of action.

Contact STAR Center, or your Technical Assistance Center Via ECCI or eCONTACT ticket if no solution is found

STAR ONLINE PUBLICATION

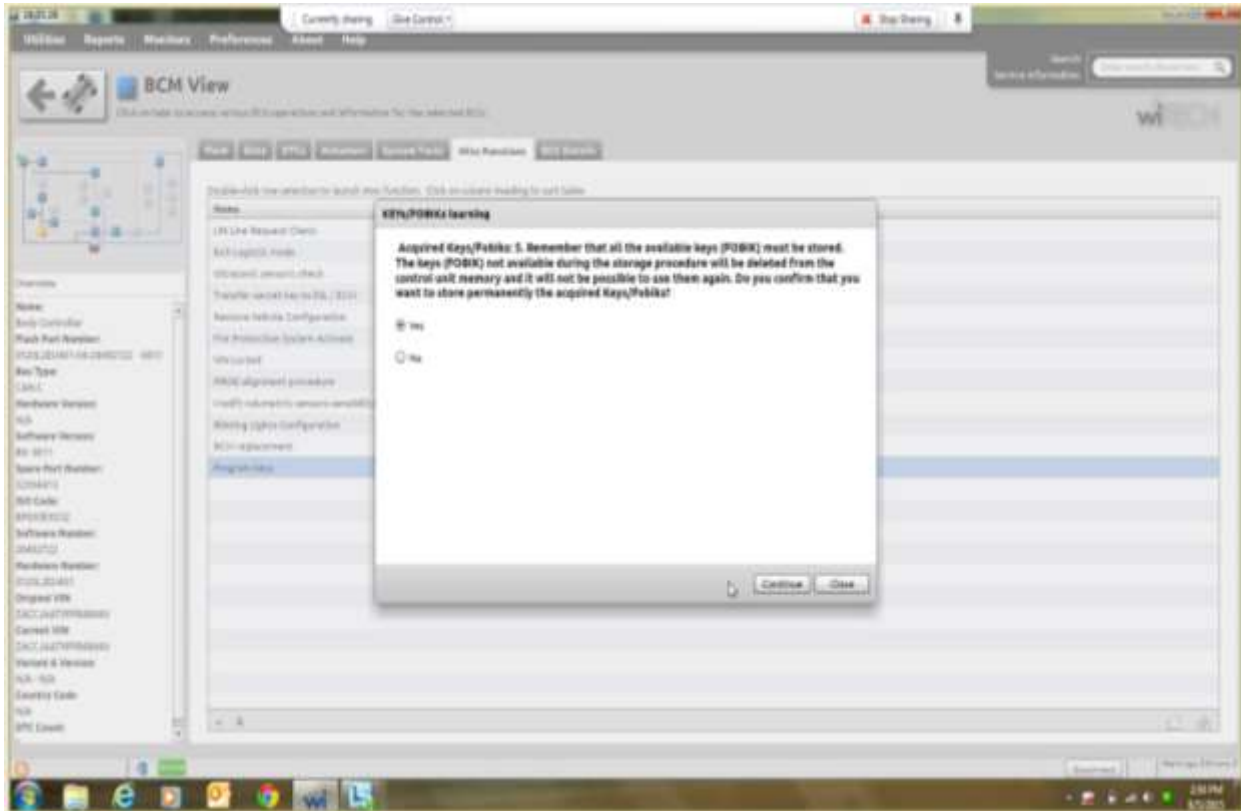


20. At this screen we must select **YES** to the question “Do you confirm that you want to store permanently the acquired Keys/Fobiks.

This document does not authorize warranty repairs. This communication documents a record of past experiences. STAR Center Online does not provide any conclusions about what is wrong with the vehicle. Rather, it captures all previous cases known that appear to be similar or related to the vehicle symptom / condition. You are the expert, and you are responsible for deciding on the appropriate course of action.

Contact STAR Center, or your Technical Assistance Center Via ECCI or eCONTACT ticket if no solution is found

STAR ONLINE PUBLICATION

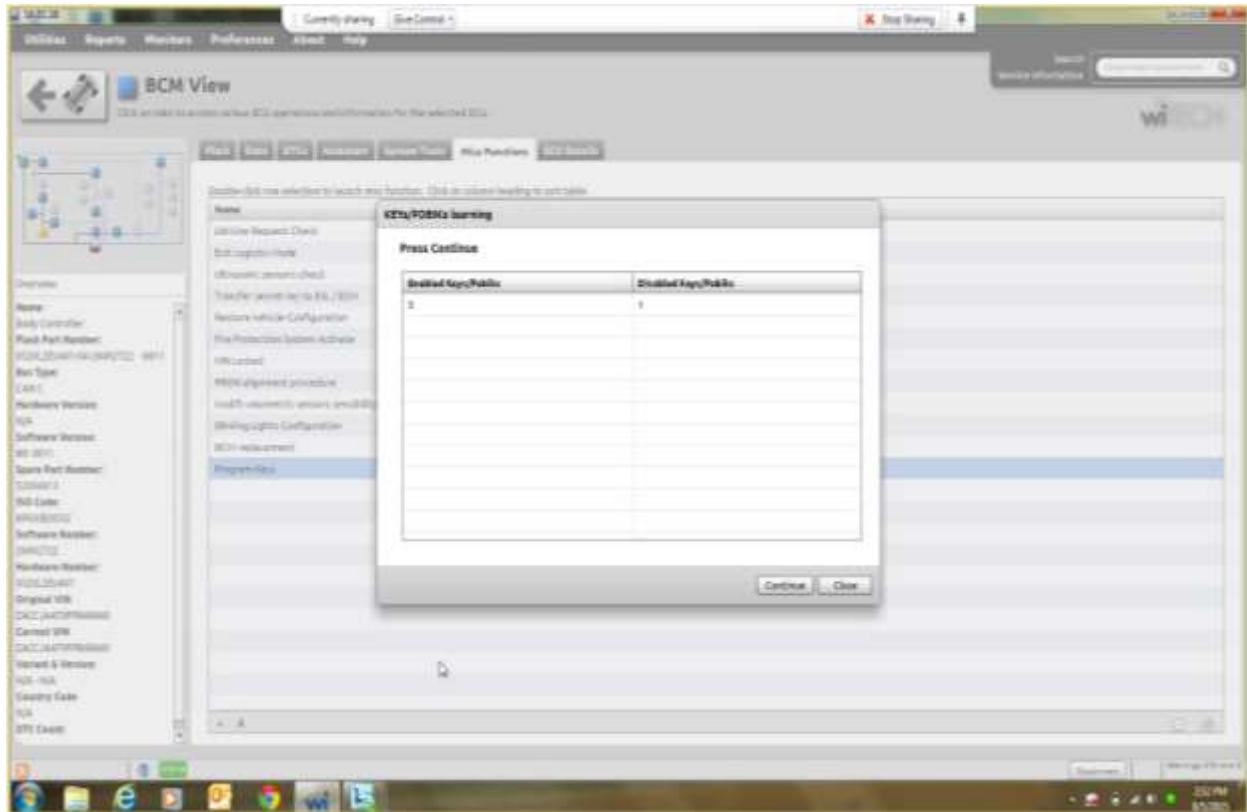


21. "YES" is now selected. Press Continue to confirm.

This document does not authorize warranty repairs. This communication documents a record of past experiences. STAR Center Online does not provide any conclusions about what is wrong with the vehicle. Rather, it captures all previous cases known that appear to be similar or related to the vehicle symptom / condition. You are the expert, and you are responsible for deciding on the appropriate course of action.

Contact STAR Center, or your Technical Assistance Center Via ECCI or eCONTACT ticket if no solution is found

STAR ONLINE PUBLICATION

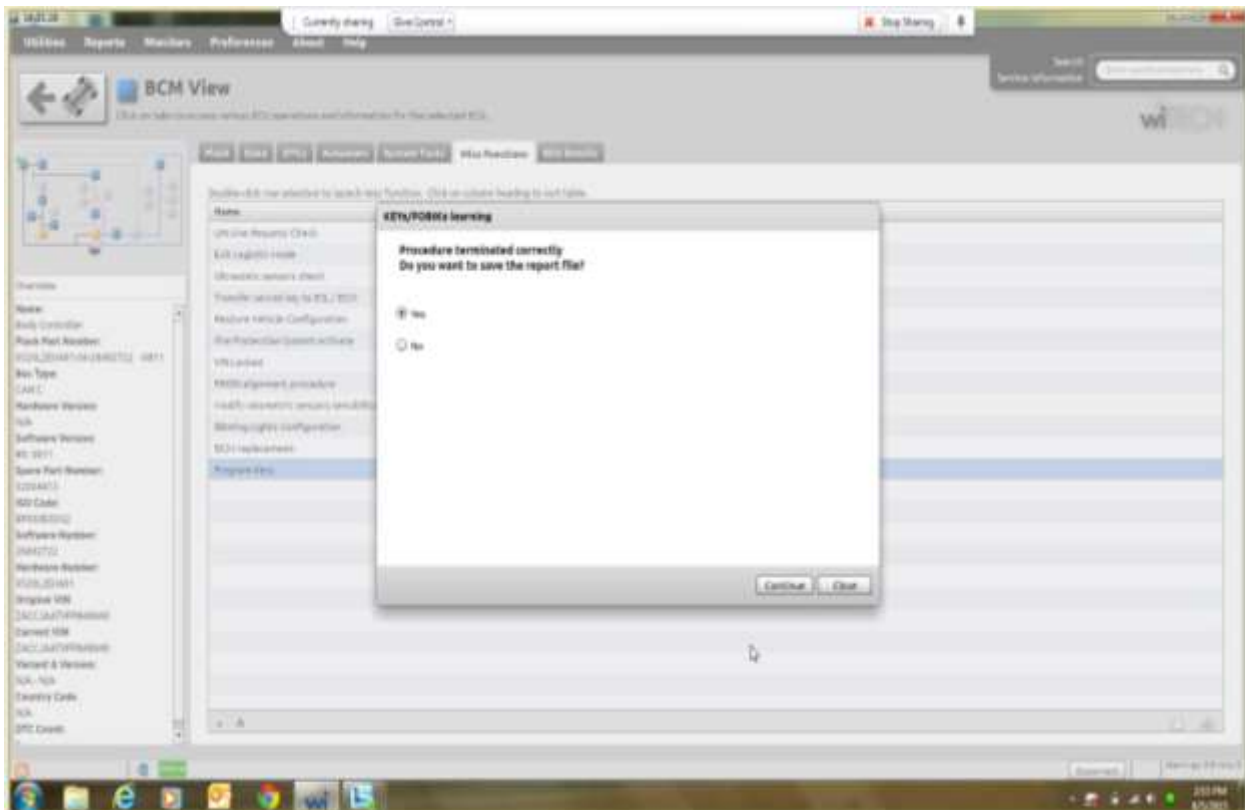


22. This screen provides a summary of the Enabled and Disabled Keys/Fobiks.

This document does not authorize warranty repairs. This communication documents a record of past experiences. STAR Center Online does not provide any conclusions about what is wrong with the vehicle. Rather, it captures all previous cases known that appear to be similar or related to the vehicle symptom / condition. You are the expert, and you are responsible for deciding on the appropriate course of action.

Contact STAR Center, or your Technical Assistance Center Via ECCI or eCONTACT ticket if no solution is found

STAR ONLINE PUBLICATION

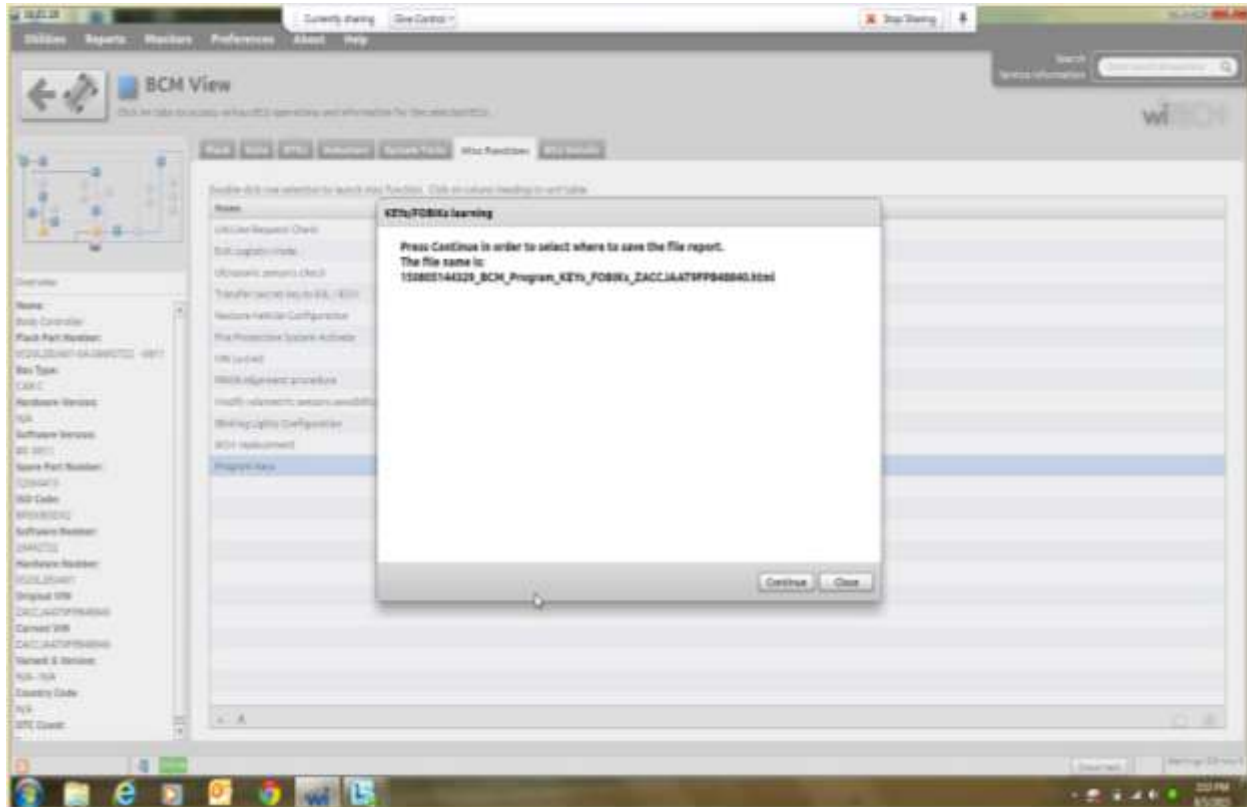


23. This step is optional. It generates a report file of the Keys/Fobiks programming.
24. Press Continue.

This document does not authorize warranty repairs. This communication documents a record of past experiences. STAR Center Online does not provide any conclusions about what is wrong with the vehicle. Rather, it captures all previous cases known that appear to be similar or related to the vehicle symptom / condition. You are the expert, and you are responsible for deciding on the appropriate course of action.

Contact STAR Center, or your Technical Assistance Center Via ECCI or eCONTACT ticket if no solution is found

STAR ONLINE PUBLICATION



25. Press Continue.
26. Turn off hazard lights.
27. It is now safe to press “Close”.
28. Disconnect the scan tool and allow a full BUS sleep cycle to complete.

NOTE: The use of a wiTECH 1 can be attempted if the process cannot be completed using a wiTech 2.

This document does not authorize warranty repairs. This communication documents a record of past experiences. STAR Center Online does not provide any conclusions about what is wrong with the vehicle. Rather, it captures all previous cases known that appear to be similar or related to the vehicle symptom / condition. You are the expert, and you are responsible for deciding on the appropriate course of action.

Contact STAR Center, or your Technical Assistance Center Via ECCI or eCONTACT ticket if no solution is found