



## Technical Service Bulletin

GROUP <b>CAMPAIGN</b>	NUMBER <b>23-01-003G</b>
DATE <b>JANUARY, 2023</b>	MODEL(S) <b>G70 (IK) G80 (RG3) GV70 (JK1) GV80 (JX1)</b>

**SUBJECT:** TORQUE CONVERTER REPLACEMENT  
(SERVICE CAMPAIGN T27G)

***This TSB supersedes TSB 22-01-071G to add additional instructions for installing the torque converter (Step 5).***

**DESCRIPTION:** Some of the applicable vehicles may experience torque converter internal rivet damage and cracks. Symptoms may include a scratching noise, and in rare cases, an engine stall at idle or at creep speeds. This bulletin describes the procedure to replace the torque converter.

### ★ IMPORTANT

Dealers must perform this Service Campaign on all affected vehicles prior to customer retail delivery.

When a vehicle arrives at the Service Department, access Hyundai Motor America's "Warranty Vehicle Information" screen via WEBDCS to identify open Campaigns.

### STUI



**This TSB includes a STUI photo as a requirement. Where indicated, please include the last 6 digits of the VIN and date of repair on a piece of paper. Ensure the VIN and date of repair are clearly visible. Finally, please ensure the captured picture is completed according to the steps in the TSB and uploaded to STUI. All claims that have incomplete, missing, or incorrect pictures are subject to debit.**

**APPLICABLE VEHICLES:** Certain 23MY Genesis vehicles produced from April 14, 2022 to June 14, 2022.

- 2023 G70 (IK) 2.0T
- 2023 G80 (RG3) 2.5T
- 2023 GV70 (JK1) 2.5T
- 2023 GV80 (JX1) 2.5T

**PARTS INFORMATION:**

Model	Part Name	Part Number		Remarks
		Previous	New	
G70 (IK) 2.0T	Torque converter	45100-47750	45100-47750QQH	Order 1 torque converter according to model
G80 (RG3) 2.5T		45100-47810	45100-47810QQH	
GV70 (JK1) 2.5T		45100-47840	45100-47840QQH	
GV80 (JX1) 2.5T		45100-47810	45100-47810QQH	
All	SP-IV-RR ATF	00232-19052		4 quarts

**WARRANTY INFORMATION:**

Model	Drive	Op. Code	Operation	Op. Time	Causal Part	Nature Code	Cause Code
G80 (RG3)	4WD	20D085R0	Torque converter replacement	5.2 M/H	45100-47810QQH	I14	ZZ4
G80 (RG3)	2WD	20D085R1		4.8 M/H			
GV80 (JX1)	4WD	20D085R2		5.7 M/H	45100-47810QQH		
GV80 (JX1)	2WD	20D085R3		5.5 M/H			
GV70 (JK1)	4WD	20D085R4	ATF supplement and oil level check	6.1 M/H	45100-47840QQH		
GV70 (JK1)	2WD	20D085R5		5.9 M/H			
G70 (IK)	4WD	20D085R6		5.7 M/H	45100-47750QQH		
G70 (IK)	2WD	20D085R7		5.5 M/H			

**NOTE 1:** Submit Claim on Campaign Claim Entry Screen

**NOTE 2:** If a part that is not covered by this campaign is found in need of replacement while performing this service campaign and the affected part is still under warranty, submit a separate claim using the same repair order. If the affected part is out of warranty, submit a Prior Approval request for goodwill consideration prior to performing the work.

**NOTE 3:** Four quarts of ATF will be reimbursed via each of the Op Codes.

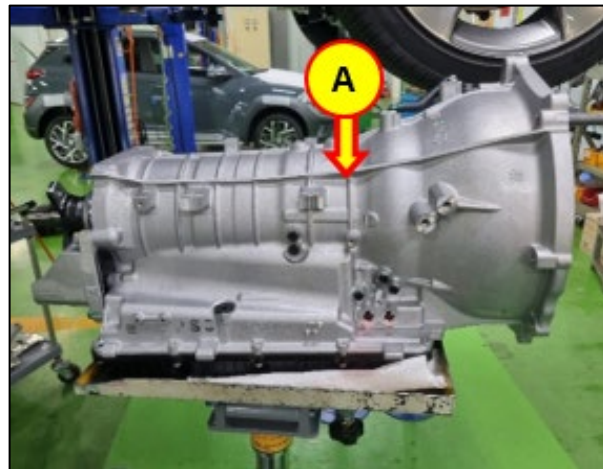
**NOTE 4:** Op time includes taking a STUI photo and uploading. The STUI photo must include the new torque converter installed with a piece of paper displaying the last 6 digits of the VIN and date of the repair. **If not included, claim will be subject to debit.**

**NOTE 5:** The incident parts are subject to callback through the normal Warranty Technical Center (WTC) parts return process. **The claim is subject to debit if the part is not returned.**

**SERVICE PROCEDURE:**

1. Record the customer's radio stations.  
Disconnect the negative battery cable.  
Remove the plastic undercover below the transmission.

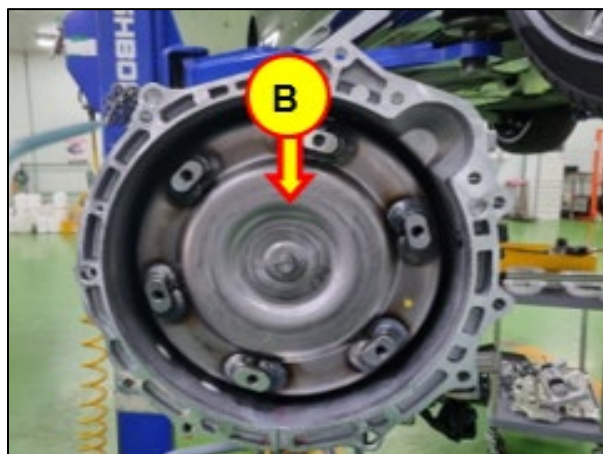
2. Remove the transmission (A).  
Refer to the applicable shop manual, **Automatic Transmission System > Automatic Transmission System > Automatic Transmission > Repair procedures.**



3. Remove the torque converter.  
Use a paper towel or shop rag to wipe off the residual ATF.



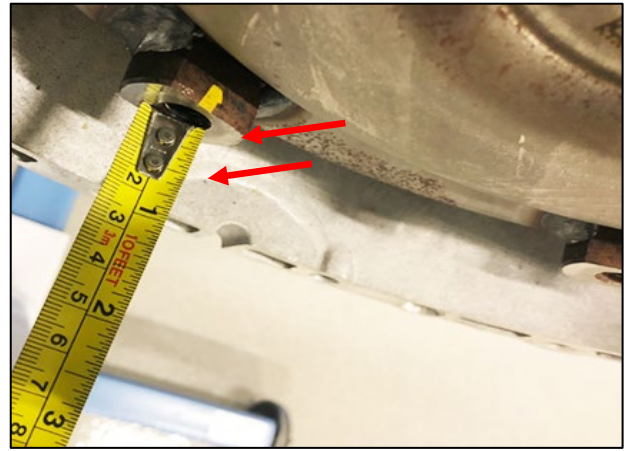
4. Install the new torque converter (B).



5. Rotate the torque converter in both directions and push inward until the torque converter is fully installed in the converter housing to the specified depth.

The depth is measured from the bolt hole to the edge of the transmission case.

**Specification: Approximately 1.0 inch (26.4mm)**



- 6.

**STUI**



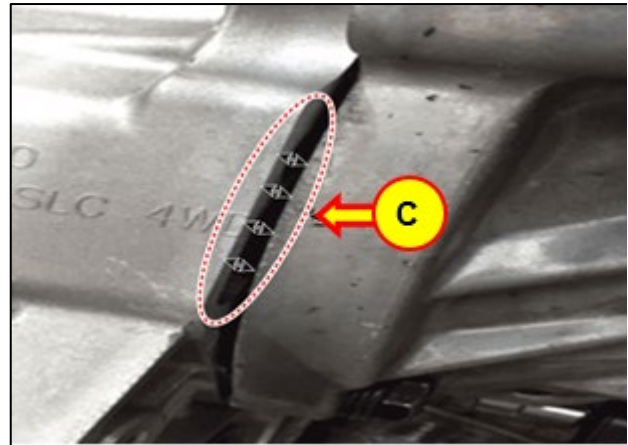
Using STUI, take a photo of the new torque converter with the last 6 digits of the VIN and the date of repair on a piece of paper.



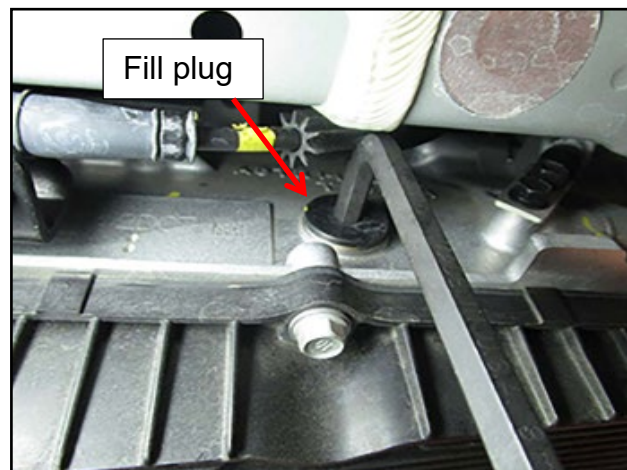
7. Reinstall the transmission.

Carefully push the transmission into position until there is no gap between the engine and transmission.

**NOTE:** In the event of a gap (C), do not force the transmission to be installed with fastening bolts. Instead, repeat Step 5 and fully install the torque converter.



8. Shift to **Neutral (N)** and lift the vehicle on a hoist. Use an 8mm or 5/16" hex wrench and remove the fill plug and washer.





9. Remove the oil level check plug (A).

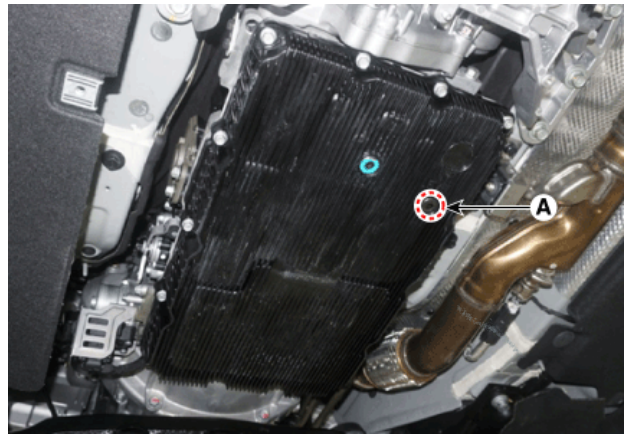
Use a fluid pump or suction gun to add **SP-IV-RR** ATF through the fill plug until ATF flows from the oil level check plug (A).

Reinstall the oil level check plug (A).

Reinstall the fill plug.

**NOTICE**

Use only **SP-IV-RR** ATF, P/N 00232-19052.



10. Attach a GDS and select vehicle, **Data Analysis, A/T** menu and **Oil Temperature Sensor**.

Move the shift lever from **P-R-D** and back to **N**. Drive the vehicle until the ATF is at the low end of the range of 122~140°F (50~60°C).

11. Start the engine, shift to **Neutral (N)** and raise the vehicle on a hoist.

Remove the fill plug and oil level check plug (A).

Add **SP-IV-RR** ATF through the fill plug until ATF flows out the oil level check plug in a thin steady stream.

Reinstall the oil level check plug (A).

**Torque: 16~18 lb-ft (2.3~2.5 kgf.m, 22~24 N.m)**

Reinstall the fill plug and washer.

**Torque: 25~33 lb.ft (3.5~4.5 kgf.m, 34~44 N.m)**



12. Reinstall the plastic undercover below the transmission.

Reconnect the negative battery cable.

Input the customer's radio stations.

Drive the vehicle to confirm proper operation of the transmission.