

| | |
|---------------------|-----------------------|
| REFERENCE: | Nova Bus Manuals |
| SECTION: | 16: Electrical System |
| RS N°: | MQR 7621-2068 |
| EFFECTIVE IN PROD.: | N/A |

APPLICATION DEADLINE: 2024FE23
CLAIM REFERENCE NUMBER: WB-5194

| | |
|----------------|---|
| SUBJECT: | Marker lights failing. |
| JUSTIFICATION: | Destination sign controllers were failing at a high rate. Water intrusion causing signs to fail cracks on lights. |

| LEVEL | DESCRIPTION | DIRECT CHARGES | | TIME |
|-------|---|----------------|----------|------|
| | | LABOUR | MATERIAL | |
| 1 | Inspection on marker lights | Novabus | Novabus | 0 h |
| 2 | Replacement of gasket and marker lights | Novabus | Novabus | 1 h |

MATERIAL REQUIRED PER VEHICLE

| QTY | PART N° | REV. | DESCRIPTION |
|----------------|----------|------|-------------------------|
| LEVEL 1 | | | |
| 5 | N8951336 | – | GASKET (92004A802) |
| LEVEL 2 | | | |
| 1 | N37779 | B | LED 24V RECTANGULAR RED |
| 10 | N32046 | A | SCREW 10-32X11/2PAN SS |
| 10 | G5007158 | – | NUT WEL10-32X.665 ST |

Materials will be available within 63 days once your order has been placed.

To order, please contact novabus.parts@volvo.com

Or by phone for CANADA 1-800-771-6682, for USA 1-877-999-8808

Specify document number, quantity of parts required and shipping address.

DISPOSAL OF PARTS

| | | | |
|--------------------|------------|----------|---|
| REMOVED PARTS ARE: | DISCARDED* | RETAINED | * Dispose of the unused parts and the defective parts in accordance with local environmental standards in effect. |
| | Yes | – | |

REVISION HISTORY

| REV. | DATE | CHANGE DESCRIPTION | WRITTEN BY |
|------|----------|--------------------|------------|
| NR | 2022DE15 | Initial release | Devanand |

APPROVED BY:

PAGE 1 OF 6

| CLIENT | ORDER | ROAD NUMBER | | VIN (2NVY/4RKY...) | | QTY |
|----------------------------------|-------|-------------|------|--------------------|---------------|-----|
| | | FROM | TO | FROM | TO | |
| New York City Transit - New York | L958 | 5439 | 5442 | S92J9G9775533 | S92J9G9775631 | 4 |
| New York City Transit - New York | L959 | 5443 | 5443 | S92J0H9776118 | S92J0H9776118 | 1 |
| New York City Transit - New York | LB59 | 5444 | 5484 | S92J7H9776195 | S92J6H9776379 | 41 |
| New York City Transit - New York | LA23 | 5485 | 5530 | S92J5J9776380 | S92J6J9776517 | 46 |
| New York City Transit - New York | LA73 | 8504 | 8507 | L82J8J9776445 | L82J8J9776476 | 4 |
| New York City Transit - New York | LB29 | 5531 | 5566 | S92J9J9776687 | S92J6J9776873 | 36 |
| New York City Transit - New York | LA76 | 8508 | 8633 | L82J9J9776924 | L82J8K9777144 | 125 |
| New York City Transit - New York | LB99 | 5567 | 5602 | S92J2J9776935 | S92J5K9777000 | 36 |
| New York City Transit - New York | LB78 | 8526 | 8526 | L82J3K9776984 | L82J3K9776984 | 1 |
| New York City Transit - New York | LC32 | 8634 | 8754 | L82JXK9777145 | L82J5K9777277 | 121 |
| New York City Transit - New York | LC79 | 9623 | 9784 | L82L1M9777782 | L82L4M9777954 | 162 |
| New York City Transit - New York | LD64 | 9785 | 9910 | L82L0M9777871 | L82L1M9778155 | 126 |

**WARNING****FOLLOW YOUR INTERNAL SAFETY PROCEDURES.**

- 1.1. Park the vehicle on an even surface with the transmission on neutral.
- 1.2. Apply the parking brake and set the master control switch to the **stop** position.
- 1.3. Set the battery disconnect switch in the battery compartment to the **off** position

INSPECTION

- 1.4. locate marker lights on front of the bus (See Figure 1).

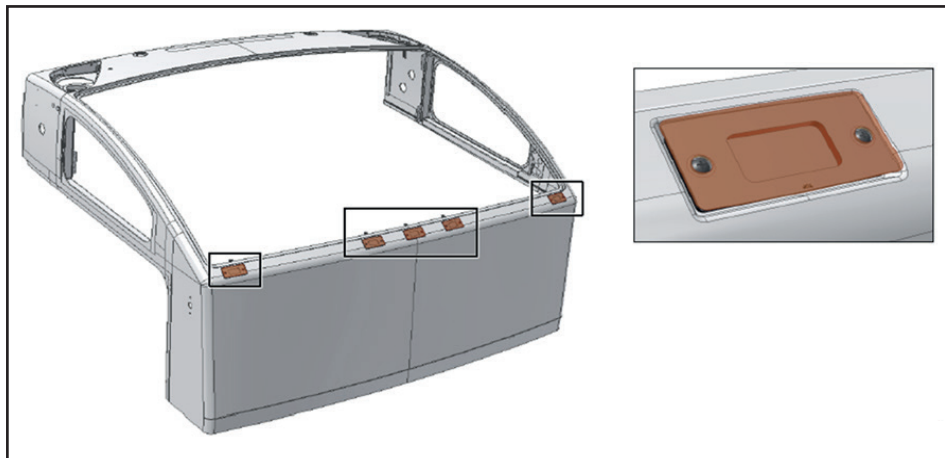


Figure 1 - Location of marker lights

- 1.5. Every marker light gasket will be replaced with new larger gasket.
- 1.6. Prior to replacing gaskets turn on marker lights, confirm all lights are working and none are broken or contain any water intrusion.
- 1.7. All lights must be checked for any silicon which added to prevent the water intrusion need to be replaced.
- 1.8. If any lights are not working or damaged which need to be replaced.
- 1.9. Working lights can be reused along with new gasket.
- 1.10. Replace any failed or broken lights (see Figure 2).



Figure 2 - Broken marker light

- 1.11. Remove the old well nuts and gasket.
- 1.12. Remove any silicon which added.
- 1.13. The old gasket must be completely cleaned from the bus body.
- 1.14. Inspect the area for any damage to the fiberglass shell.
- 1.15. Report any damage as it will need to be repaired.

INSTALLATION

- 1.16. Remove the two screws holding each marker light.
- 1.17. Carefully remove the marker lights. A spatula, a knife or a screw driver might be required to separate the adhesive sealant (Dolchem) (See Figure 3).

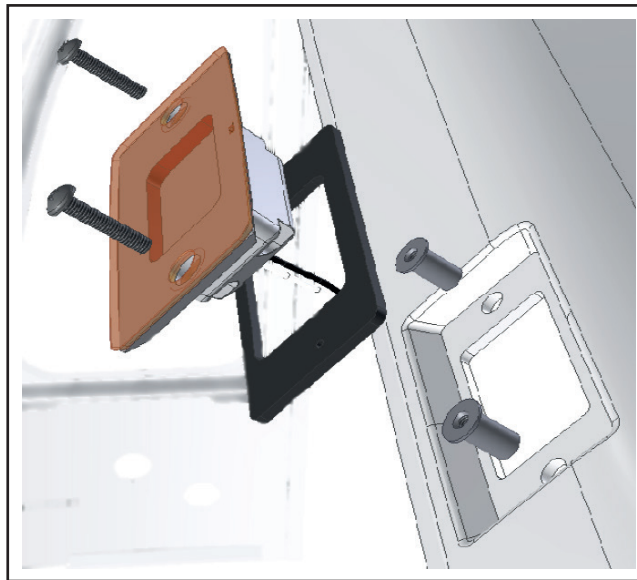


Figure 3 - Removal order

- 1.18. Unplug the light's connector.
- 1.19. It is important to thoroughly clean the light's mounting surface in the fiber glass panel (See Figure 4).

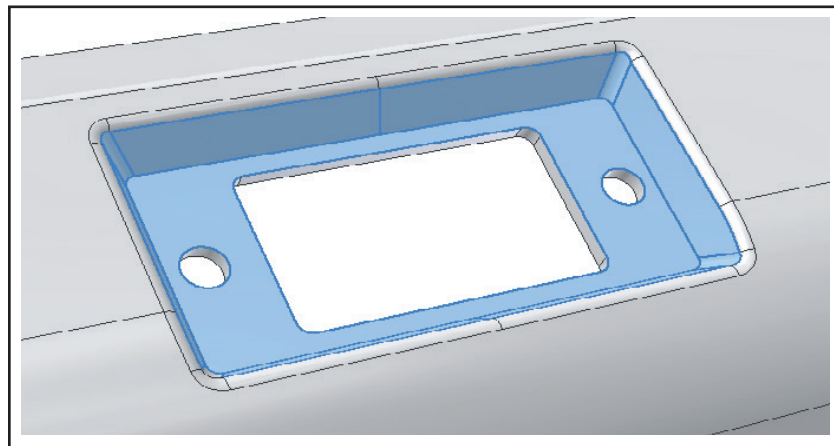


Figure 4 - Surface to clean

- 1.20. It must be free from adhesive (Dolchem) residue or felt gasket residue.
- 1.21. Before installing the light, apply Dolchem adhesive sealant in the specified areas on the vehicle (See Figure 5).

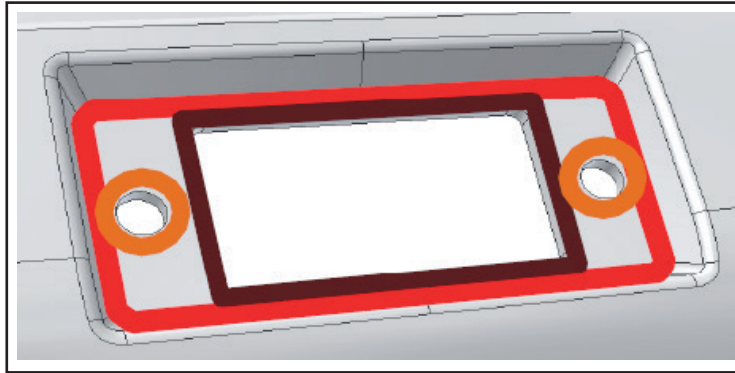


Figure 5 - Adhesive sealant application

- 1.22. Install the new wellnut G5007158 for each light (See Figure 6).



Figure 6 - Installation of new wellnut

- 1.23. Install new gasket P/N 92004A802 which is larger than old gasket P/N 19401419 (See Figure 7).

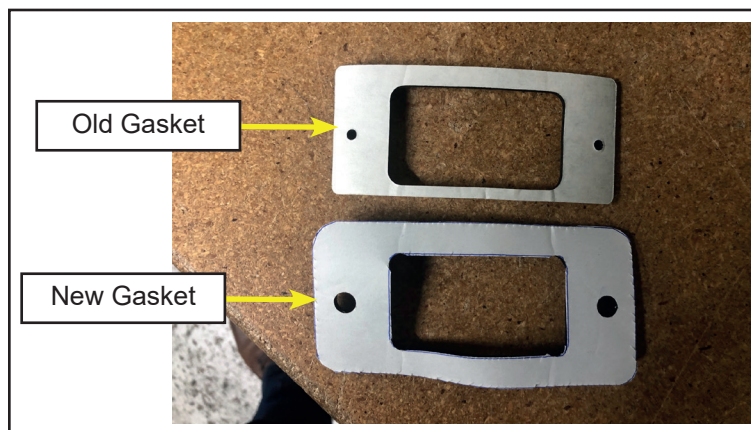


Figure 7 - Typical view of old gasket and new gasket

- 1.24. Install the marker light N37779 and make sure it is installed properly, each light is marked with which side is top (See Figure 8).



Figure 8 - Installation of marker light

- 1.25. Once the light is in place, but before inserting the screws, apply Dolchem around the screw holes (See Figure 9).

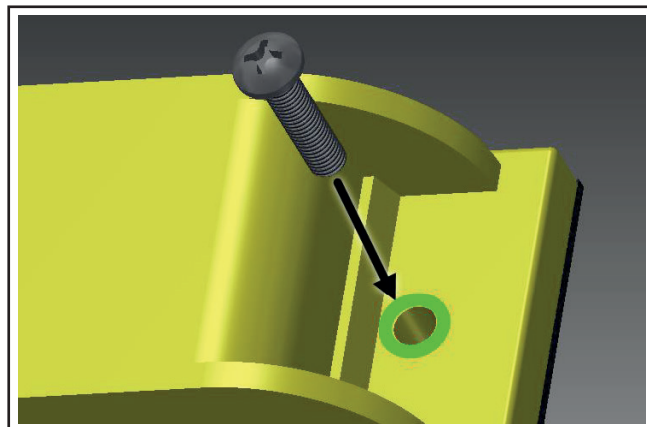


Figure 9 - Adhesive sealant application

- 1.26. Use new screws N32046 and torque to 42 Nm.
1.27. Test marker light to ensure its functionality.
1.28. Check interior of bus or any signs of water intrusion, wet spots or water stains.
1.29. Check all surrounding components for proper functionality make notes and report any unusual findings.
1.30. The vehicle can return in service. ❖