

REFERENCE:	Nova Bus Manuals
SECTION:	01: Body
RS N°:	MQR 7621-2086
EFFECTIVE IN PROD.:	N/A

APPLICATION DEADLINE: 2024MR15
CLAIM REFERENCE NUMBER: WB-5125

SUBJECT:	Sika Seams Cracking.
JUSTIFICATION:	Due to the lack of bonding surface between the two large roof top panels, when thermal expansion and contraction occur these panels separate and leave an opening.

LEVEL	DESCRIPTION	DIRECT CHARGES		TIME
		LABOUR	MATERIAL	
1	Removal of sika seam above & below gutter, paint to match	Novabus	Novabus	1 h
2	–	–	–	–

MATERIAL REQUIRED PER VEHICLE

QTY	PART N°	REV.	DESCRIPTION
LEVEL 1			
4	N86735-01	–	Isopropyl Alcohol wipe
2	680225	–	Scotch Brite #7447B
1	N8950480	–	Flat Touch up Brush
LEVEL 2			
–	–	–	–
LEVEL 1 SHOP SUPPLIES			
2 in	N8950467	–	3M Extreme Sealing Tape BLACK
0.25 L	N8950491	–	Paint : DARK BLUE (NY)
50 in	N8950481	–	3M Masking Tape
15 ml	N8950925	–	3M Marine adhesive 4000 UV, Black
15 ml	N8950926	–	3M Adhesive Promoter 111

Materials will be available within 42 days once your order has been placed.

To order, please contact novabus.parts@volvo.com

Or by phone for CANADA 1-800-771-6682, for USA 1-877-999-8808

Specify document number, quantity of parts required and shipping address.

DISPOSAL OF PARTS

REMOVED PARTS ARE:	DISCARDED*	RETAINED	* Dispose of the unused parts and the defective parts in accordance with local environmental standards in effect.
	Yes	–	

REVISION HISTORY

REV.	DATE	CHANGE DESCRIPTION	WRITTEN BY
NR	2022OC21	Initial release	Devanand
R1	2023JA23	Shop supply parts updated & Procedure updated	Devanand

APPROVED BY:

PAGE 1 OF 7

CLIENT	ORDER	ROAD NUMBER		VIN (2NVY/4RKY...)		QTY
		FROM	TO	FROM	TO	
New York City Transit - NYCT	LA73	8504	8507	L82J8J9776445	L82J8J9776476	4
New York City Transit - NYCT	LA76	8508	8633	L82J9J9776924	L82J8K9777144	125
New York City Transit - NYCT	LB78	8526	8526	L82J3K9776984	L82J3K9776984	1
New York City Transit - NYCT	LC32	8634	8754	L82JXK9777145	L82J5K9777277	121

**WARNING**

FOLLOW YOUR INTERNAL SAFETY PROCEDURES.

- 1.1. Park the vehicle on an even surface with the transmission on neutral.
- 1.2. Apply the parking brake and set the master control switch to the **stop** position.
- 1.3. Set the battery disconnect switch in the battery compartment to the **off** position

**NOTE**

This procedure must be performed inside a warm environment.

- 1.4. Mask area using 3M masking tape N8950481.

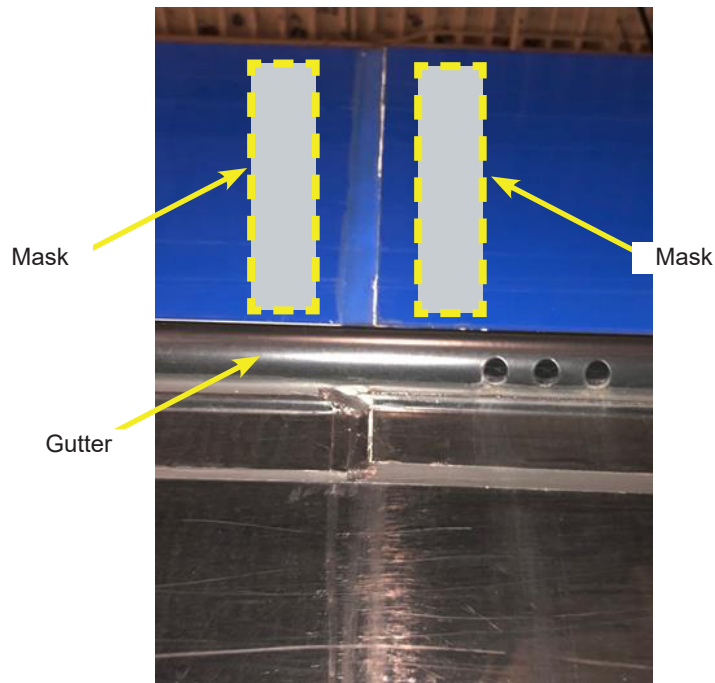
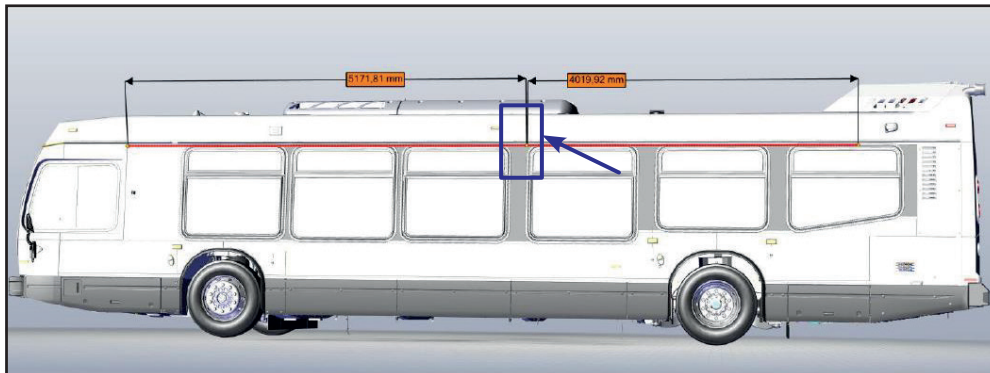


Figure 1 - Mask Area with Tape

- 1.5. Remove Sika seam (above gutter) only up to the horizontal roof surface.

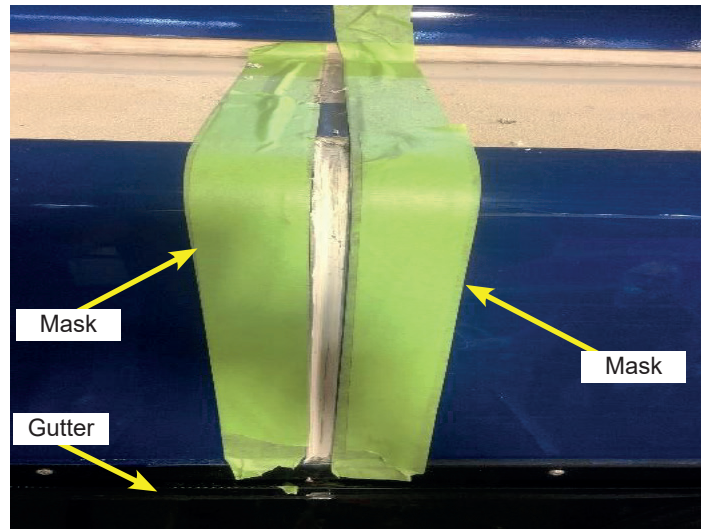


Figure 2 - Remove Sika

- 1.6. Score existing sika zone with scotch brite to obtain a matte finish.
1.7. Remove the dust with a clean dry cloth.
1.8. Use isopropyl alcohol wipe N86735-01 to clean the surface prior to paint application.
1.9. Apply paint N8950491 (Dark Blue), must be 60° F or higher.
1.10. Allow to dry for 15 to 20 mins.
1.11. Apply 2nd coat and dry for 15 to 20 mins.

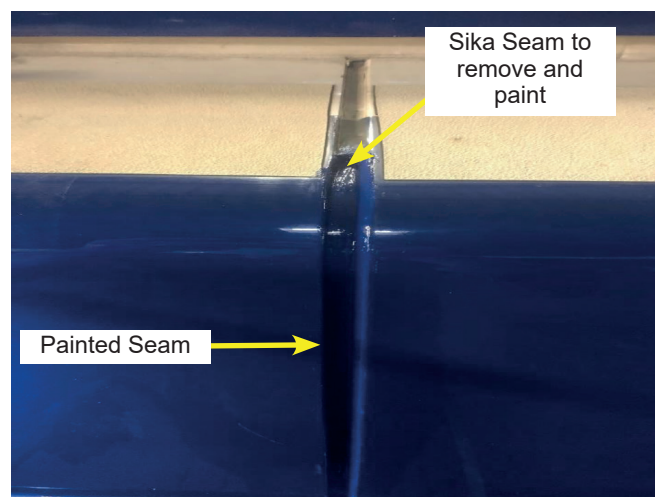


Figure 3 - Apply Paint

1.12. Use 3M promoter N8950926 to clean the surface prior to tape.

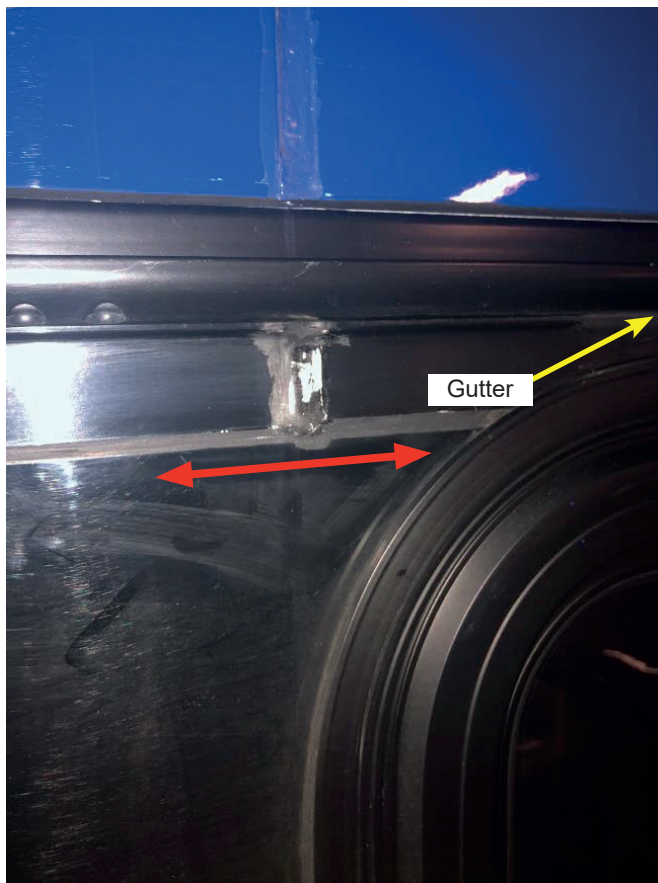


Figure 4 - Surface Cleaning

1.13. Mask area using 3M masking tape N8950481.

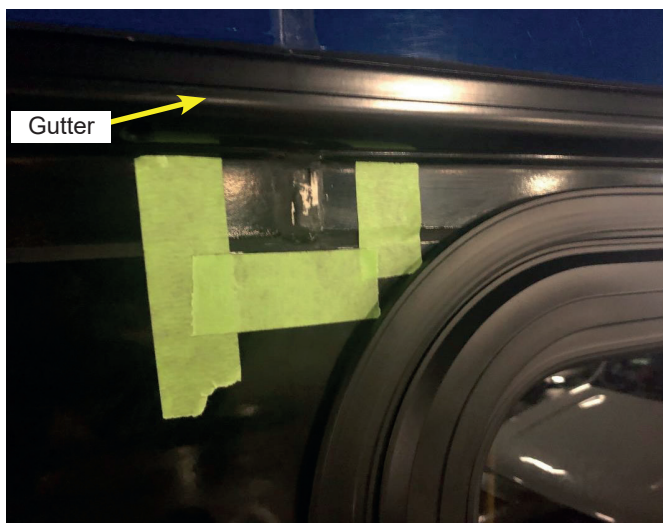


Figure 5 - Mask with Tape

- 1.14. Apply 3M adhesive N8950925 evenly around the edges and to the back of the 3M tape N8950467.



Figure 6 - Apply Adhesive

- 1.15. Apply tape, press firmly into place be sure to cut the tape inline with the door frame. spread any excess of the 3M adhesive that may have squeezed out from the back around the edges.



Figure 7 - Apply Tape

1.16. Remove the masking tape.



Figure 8 - Remove Masking Tape

1.17. The vehicle can return in service.❖