

REFERENCE:	Nova Bus Manuals
SECTION:	01: Body
RS N°:	MQR 7621-2086
EFFECTIVE IN PROD.:	N/A

APPLICATION DEADLINE: 2024MR15
CLAIM REFERENCE NUMBER: WB-5145

SUBJECT:	Sika Seams Cracking.
JUSTIFICATION:	Due to the lack of bonding surface between the two large roof top panels, when thermal expansion and contraction occur these panels separate and leave an opening.

LEVEL	DESCRIPTION	DIRECT CHARGES		TIME
		LABOUR	MATERIAL	
1	Addition of 3M tape below the gutter.	Novabus	Novabus	1 h
2	–	–	–	–

MATERIAL REQUIRED PER VEHICLE

QTY	PART N°	REV.	DESCRIPTION
LEVEL 1			
–	–	–	–
LEVEL 2			
–	–	–	–
LEVEL 1 SHOP SUPPLIES			
2 in	N8950467	–	3M Extreme Sealing Tape BLACK
50 in	N8950481	–	3M Masking Tape
30 ml	N8950925	–	3M Marine adhesive 4000 UV, Black
30 ml	N8950926	–	3M Adhesive Promoter 111

Materials will be available within 42 days once your order has been placed.

To order, please contact novabus.parts@volvo.com

Or by phone for CANADA 1-800-771-6682, for USA 1-877-999-8808

Specify document number, quantity of parts required and shipping address.

DISPOSAL OF PARTS

REMOVED PARTS ARE:	DISCARDED*	RETAINED	* Dispose of the unused parts and the defective parts in accordance with local environmental standards in effect.
	Yes	–	

REVISION HISTORY

REV.	DATE	CHANGE DESCRIPTION	WRITTEN BY
NR	2022OC21	Initial release	Devanand
R1	2023JA23	Shop supply parts updated & Procedure updated and Client list updated	Devanand

APPROVED BY:

PAGE 1 OF 6

Symbol	Meaning
Empty Field	No changes, the procedure applies
+	Contract added, the procedure applies
-	Contract removed, the procedure does not apply

SYM	CLIENT	ORDER	ROAD NUMBER		VIN (2NVY/4RKY...)		QTY
			FROM	TO	FROM	TO	
+	New York City Transit New York - NYCT	LD23	—	9621	L82LXL9777634	L82L5L9777668	3
	New York City Transit New York - NYCT	LC79	9623	9703	L82L1M9777782	L82LXM9777862	81
	New York City Transit New York - NYCT	LC79	9704	9784	L82L1M9777863	L82L4M9777954	81
	New York City Transit New York - NYCT	LD06	8755	8758	L82J3L9777778	L82J3L9777781	4
	New York City Transit New York - NYCT	LD64	9785	9805	L82L0M9777871	L82L5M9777980	21
	New York City Transit New York - NYCT	LD64	9806	9806	L82L7M9777981	L82L7M9777981	1
	New York City Transit New York - NYCT	LD64	9807	9811	L82LXM9777988	L82L1M9777992	5
	New York City Transit New York - NYCT	LD64	9812	9812	L82L3M9777993	L82L3M9777993	1
	New York City Transit New York - NYCT	LD64	9813	9828	L82L5M9777994	L82L7M9778015	16
	New York City Transit New York - NYCT	LD64	9829	9832	L82L4M9778022	L82LXM9778025	4
	New York City Transit New York - NYCT	LD64	9833	9843	L82L1M9778026	L82LXM9778039	11
	New York City Transit New York - NYCT	LD64	9844	9844	L82L1M9778043	L82L1M9778043	1
	New York City Transit New York - NYCT	LD64	9845	9910	L82L3M9778044	L82L1M9778155	66
+	New York City Transit New York - NYCT	LD08	8759	8963	L82J5M9778156	L82J8N9778508	205

**WARNING****FOLLOW YOUR INTERNAL SAFETY PROCEDURES.**

- 1.1. Park the vehicle on an even surface with the transmission on neutral.
- 1.2. Apply the parking brake and set the master control switch to the **stop** position.
- 1.3. Set the battery disconnect switch in the battery compartment to the **off** position

**NOTE**

This procedure must be performed inside a warm environment.

- 1.4. The tape will need to be cut along the angle of the door frame.

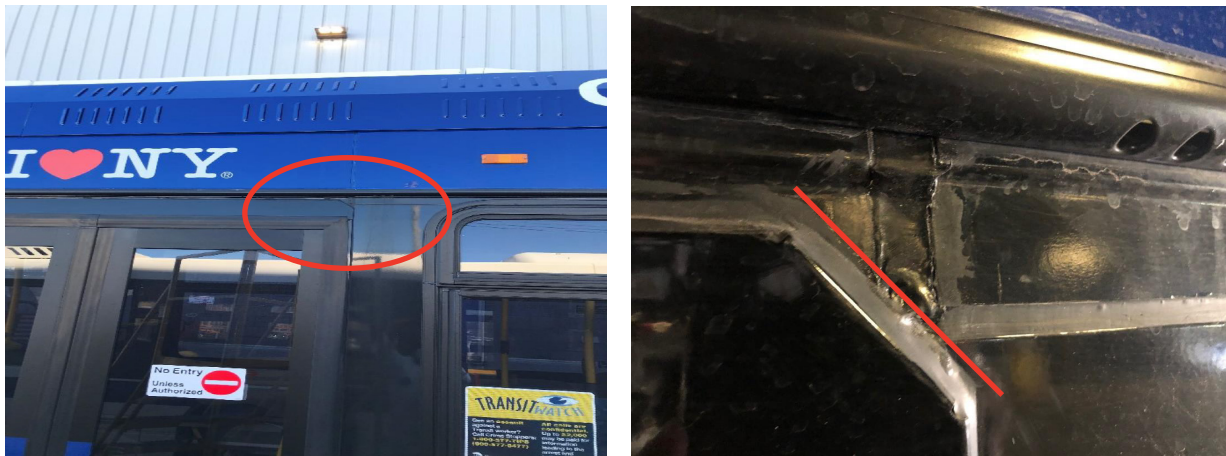


Figure 1 - Tape to be applied on the Door frame

- 1.5. A jig should be used to cut the tape to the desired angle.



Figure 2 - Highlighted area to apply Tape

1.6. Use 3M promoter N8950926 to clean the surface.



Figure 3 - Surface Cleaning

1.7. Use jig to outline tape.



Figure 4 - Apply Tape

- 1.8. With tape outline, add an even amount of 3M adhesive N8950925.



Figure 5 - Apply Adhesive

- 1.9. With tape cut, apply even amount of 3M adhesive.



Figure 6 - Apply Adhesive

- 1.10. Apply tape press firmly into place be sure to cut the tape inline with the door frame.
- 1.11. Spread any excess of the 3M adhesive that may have squeezed out from the back around the edges.



Figure 7 - Apply Tape on the Door frame

- 1.12. Remove the tape.



Figure 8 - Removal of Tape

- 1.13. The vehicle can return in service.❖