

January 27, 2023

Version 2

## Product Update: 2016-2020 MDX PGM-FI Idle Stop Software Update

Supersedes 23-001 dated January 6, 2023, to revise the information highlighted in **yellow**.

### AFFECTED VEHICLES

Year	Model	Trim	VIN Range
2016–2020	MDX	All (except Hybrid)	Check the iN VIN status for eligibility.

### REVISION SUMMARY

Under SOFTWARE UPDATE PROCEDURE, the Step 4 image was updated and changed parking system to PGM-FI.

### BACKGROUND

Under certain circumstances, after coming to a stop and the idle stop feature engages, the vehicle may not automatically restart. Typically, the customer can immediately restart the vehicle by selecting Park and pushing the ENGINE START/STOP button.

### CLIENT NOTIFICATION

Owners of affected vehicles will be sent a notification of this product update.

Do an iN VIN status inquiry to verify eligibility.

Some vehicles affected by this campaign may be in your new or used vehicle inventory. Repair these vehicles before they are sold.

### CORRECTIVE ACTION

Update the PGM-FI Software.

NOTE: The software update will decrease the Idle Stop operating range. As a result, the client may notice reduced idle stop engagement when their vehicle's battery is approaching the end of its useful life.

### WARRANTY CLAIM INFORMATION

Operation Number	Description	Flat Rate Time	Defect Code	Symptom Code	Template ID	Failed Part Number
1255G6	Update the PGM-FI Software (Idle Stop)	0.2hr	6AX00	UCR00	B23001A	37805-5J6-A75

**CLIENT INFORMATION:** The information in this bulletin is intended for use only by skilled technicians who have the proper tools, equipment, and training to correctly and safely maintain your vehicle. These procedures should not be attempted by "do-it-yourselfers," and you should not assume this bulletin applies to your vehicle, or that your vehicle has the condition described. To determine whether this information applies, contact an authorized Acura automobile dealer.

## SOFTWARE INFORMATION

NOTE: Unnecessary or incorrect repairs resulting from a failure to update the diagnostic and reprogramming software are not covered under warranty.

**Before beginning the repair, make sure all diagnostic and reprogramming software are updated as listed.**

<b>i-HDS Software Version</b>	1.008.004 or later
<b>HDS Software Version</b>	3.105.009 or later
<b>J2534 Rewrite Software Information</b>	
<b>PC Application Version</b>	1.00.0034_2461
<b>Database Update</b>	05-OCT-2022 or later
<b>NoticeDB Version</b>	05-OCT-2022 or later

**Update only the systems and software listed in this service bulletin.**

**Do not use the MongoosePRO VCI for this service bulletin as it is not an American Honda-approved device.**

For more information about updating vehicle systems, refer to service bulletin 22-100, *Updating Control Units/Modules*.

<b>Year/Model</b>	<b>Vehicle System</b>	<b>Program ID (or later)</b>
2016 ADV (2WD)	PGM-FI	37805-5J6-5460
2016 ADV (SH-AWD)	PGM-FI	37805-5J6-5470
2017 ADV (2WD)	PGM-FI	37805-5J6-7030
2017 ADV (SH-AWD)	PGM-FI	37805-5J6-7130
2018 ADV (2WD)	PGM-FI	37805-5BN-3360
2018 ADV (SH-AWD)	PGM-FI	37805-5BN-3380
2019 BASE (2WD), TECH (2WD), ADV (2WD)	PGM-FI	37805-5BN-A750
2019 BASE (SH-AWD), TECH (SH-AWD), ADV (SH-AWD), A-Spec (SH-AWD)	PGM-FI	37805-5BN-A950
2020 BASE (2WD), TECH (2WD), ADV (2WD)	PGM-FI	37805-5BN-A340
2020 BASE (SH-AWD), TECH (SH-AWD), ADV (SH-AWD), ADV (SH-AWD PMC ED), A-Spec (SH-AWD)	PGM-FI	37805-5BN-A540

## SOFTWARE UPDATE PROCEDURE

### NOTICE

- Make sure the 12-volt battery is fully charged before starting an update.
- Connect a fully charged jumper battery to the vehicle, and leave it connected during the entire procedure to maintain a steady voltage.
- Do not use the GR8 because the vehicle requires a steady electrical current.
- Control module failure caused by improperly completing a software update (early key cycle, low battery voltage, disconnected DLC cable, etc.) is not covered by warranty.
- If an error occurs during the update or the i-HDS freezes, **do not disconnect the battery or turn the ignition to OFF**. Reboot the i-HDS, and start over.
- To prevent control unit damage, do not operate anything electrical (headlights, audio system, brakes, A/C, power windows, door locks, etc.) during the update.
- Warranty reimbursement for technician labor is not allowed for **routine** checking/installation of any available software update.

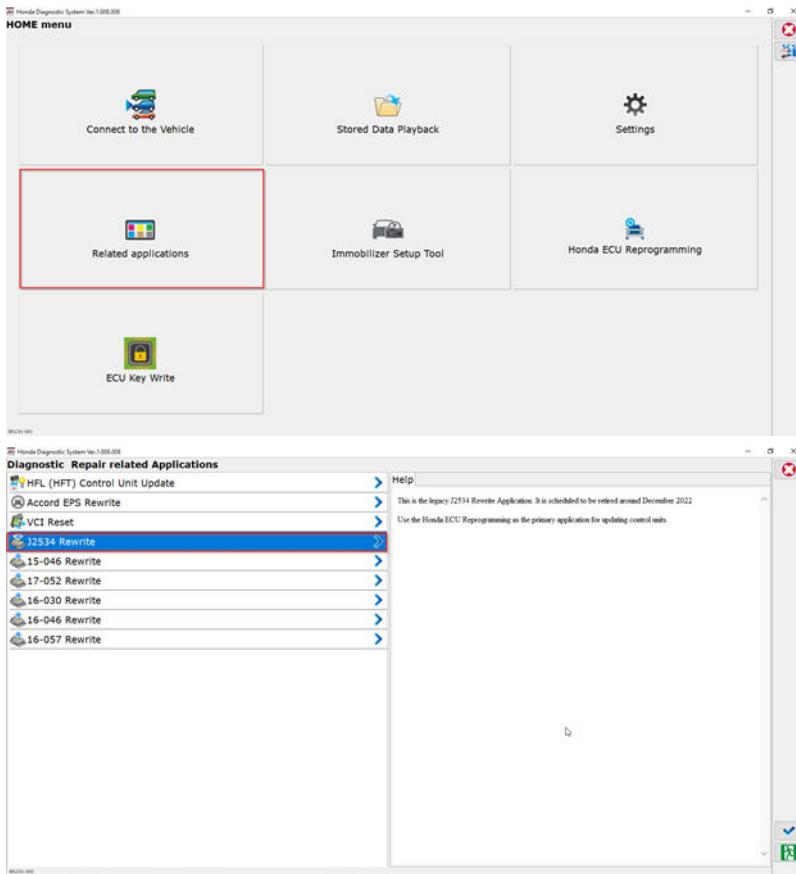
Update the **PGM-FI** system software using the J2534 rewrite software with the DST-i. Refer to service bulletin 01-023, Updating Control Units/Modules

NOTE: This update will not require entering a service bulletin number.

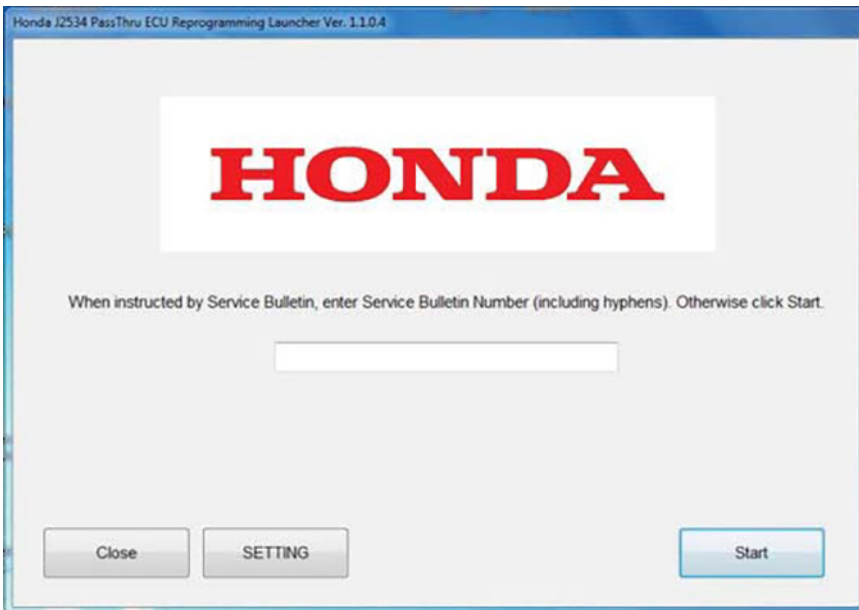
1. From the desktop, select **i-HDS**.



2. From the HOME menu, select the **J2534 Rewrite** under Related Applications”

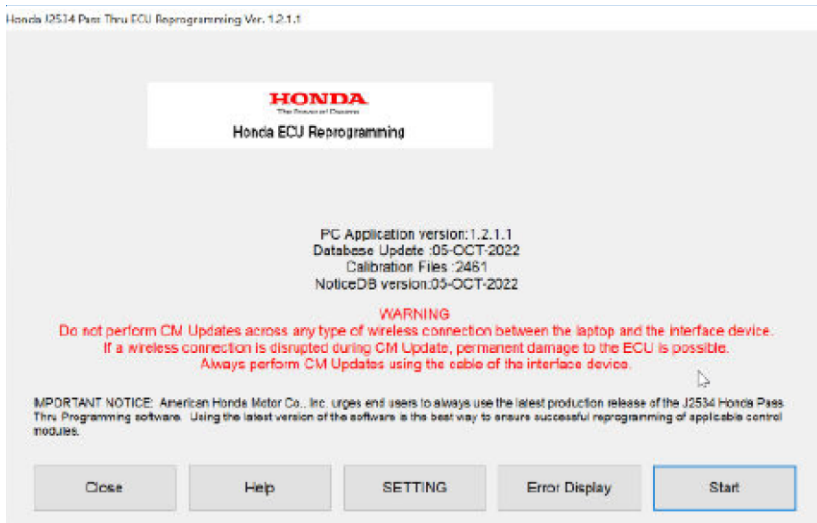


3. When prompted select **Start**, do not enter a service bulletin number.



NOTE: Under certain conditions the **HOME** menu screen may come up. If it does, just minimize it to show the screen under it.

4. **Connect the i-HDS to the vehicle and select **Start** to begin reprogramming.**



5. Follow the screen prompts, then select **Next**.

Honda J2534 Pass Thru ECU Reprogramming Ver. 1.2.1.1

CM Update Mode

FW Ver.  
1.2.1.1  
Database Update :  
05-OCT-2022  
Calibration Files :  
2461  
NoticeDB version  
05-OCT-2022

Back Next

6. Enter the VIN and repair order number. Then, select **Next**.

Honda J2534 Pass Thru ECU Reprogramming Ver. 1.2.1.1

VIN & Repair Order

VIN:

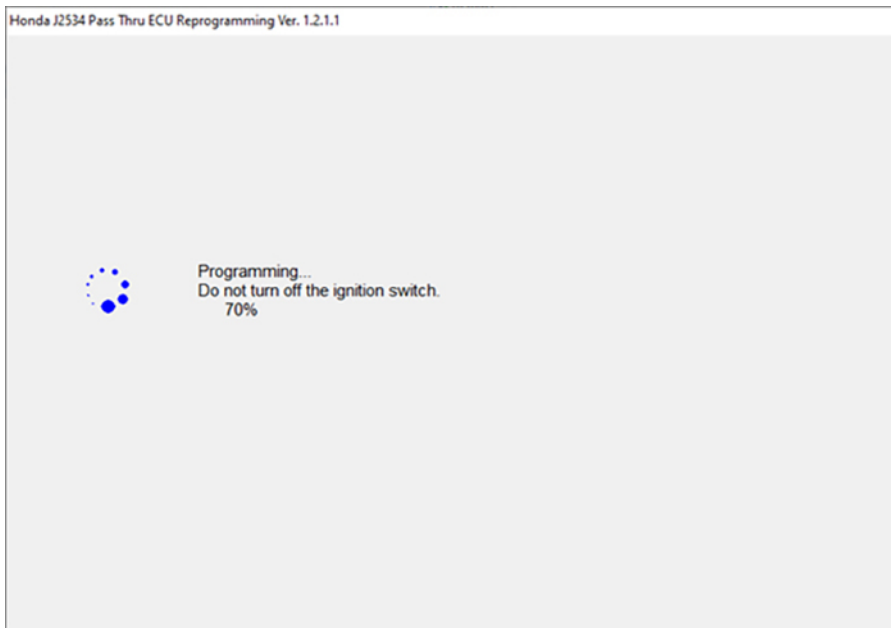
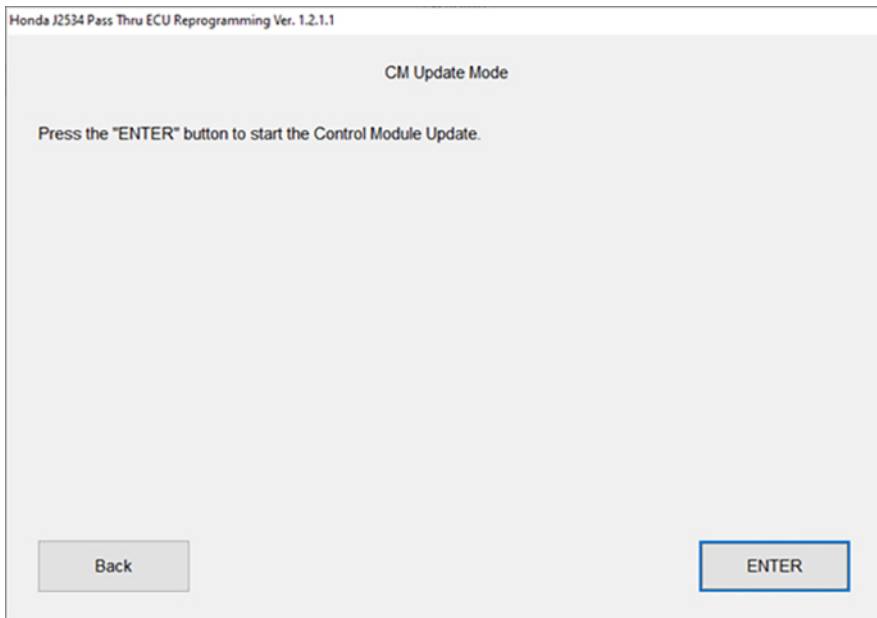
Repair Order#:

Odometer(mile):

Back Next



9. Select **ENTER** to begin reprogramming, and follow the screen prompts.





CM Update Mode

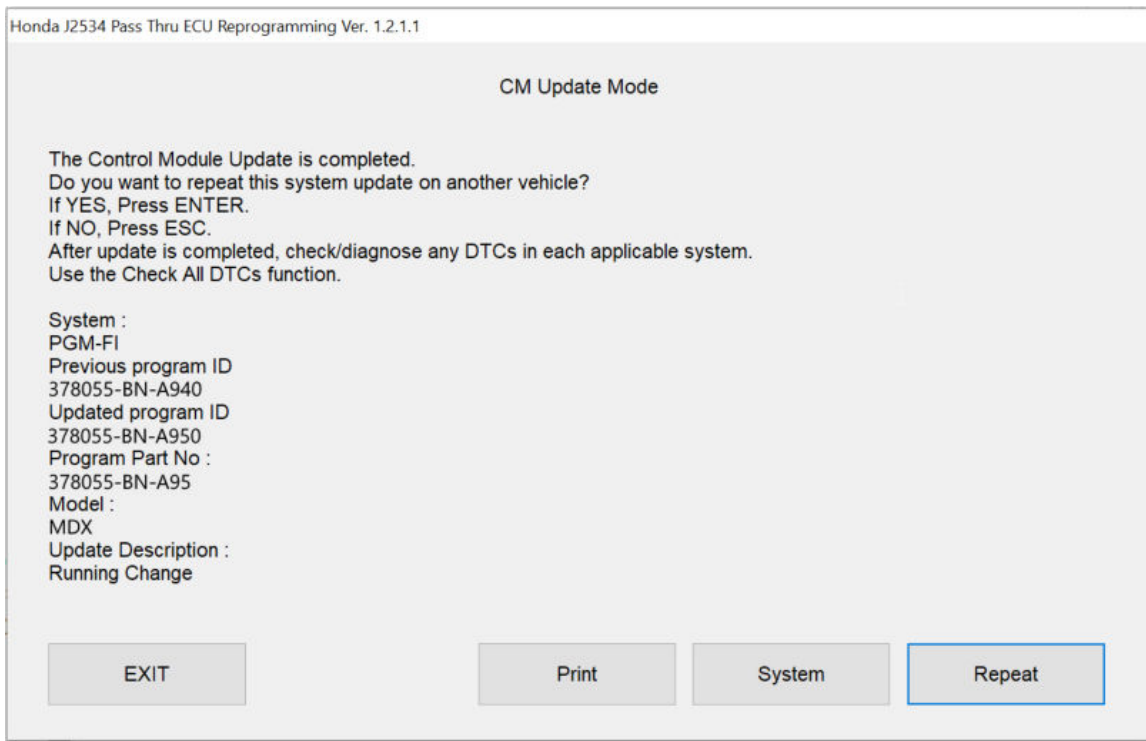
PGM-FI  
Completed.  
Turn the ignition switch OFF.

CM Update Mode

Turn the ignition switch ON within 60 seconds.

58 secs to go

10. Once the module is updated, the following screen appears, then select **EXIT**.



11. Do an ALL DTC Check then clear any codes set during the update.

12. California residents only: Fill out a Vehicle Emissions Recall – Proof of Correction certificate, and use UCR as the recall number. Have the service consultant give the certificate to your client and advise them to keep it as proof that the recall was completed. Your client will need to submit this certificate to the DMV only if requested. If you need more certificates, use reorder number Y0657.

Vehicle Emission Recall - Proof of Correction

License Number Make Year Model Body Type Vehicle Identification Number

Manufacturer Recall Number **UCR**

The above described vehicle has been repaired, modified and/or equipped with new emission control devices to meet applicable California Emission Control Laws.

Dealer's Name Address, City, State and Zip

Date Dealership's Authorized Signature

Return this certificate to DMV only when required - otherwise retain for your records.

Y0657 ACL 24832 (02/12)

END