

A PDF of this newsletter and previous ones can be found by logging in to ServiceNet and clicking on the [Elsa Newsletter](#) section in the Technician References menu.

Audi
Truth in Engineering 

Audi Elsa Newsletter

Edition 74: February 24, 2014

Content

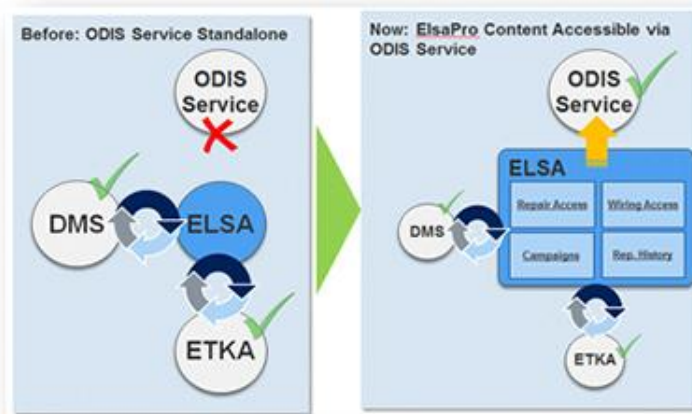
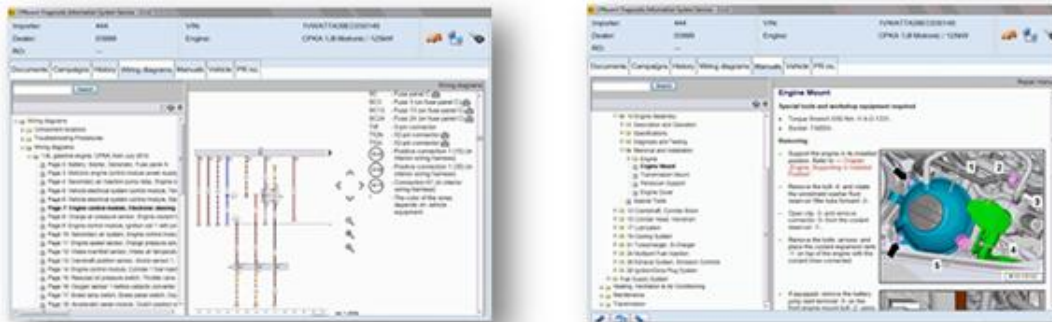
- [Offboard Diagnostic Information System Service \(ODIS Service\) is Now Integrated with ElsaPro](#)
- [Technical Bulletins](#)
- [Pending Service Solutions](#)
- [Campaigns](#)
- [Updates](#)
- [Suggestions](#)



Offboard Diagnostic Information System Service (ODIS Service) is Now Integrated with ElsaPro

Offboard Diagnostic Information System Service (ODIS Service) is now connected to ElsaPro Service Information!

Access Repair Manuals, Wiring Diagrams, Vehicle Service History, and Open Campaigns directly through ODIS.



What exactly is integrated in ODIS Service software?

- Open Campaigns
- Service History
- Repair Manuals
- Wiring Diagrams
- Vehicle Base Information
- PR Numbers
- DMS Repair Order List
- DMS Repair Order Details

What do I need to get started?

Download and install ODIS Software Version 2.1.0 with Windows 7 and Internet Explorer 9 via the new ODIS Win 7 Recovery DVD. Details can be found on ServiceNet.

→Setup: ServiceNet> Workshop Equipment > ODIS Service> Service Information> 2014 > ODIS Service Infomedia [Setup Instructions](#)

→User Guide:> Technician References > Communications> ODIS Service Infomedia [User Guide](#)

For any questions or concerns, please send an email to aoa.workshopinformation@audi.com.

[Back to top](#)

Technical Bulletins

27 Vibrations felt at 1000 rpm and 3000 rpm (2036392/1)		
Model(s)	Year	Vehicle Specific Equipment
S6, S7, RS 7, A8, S8	2013–2014	4.0 TFSI
Condition: <ul style="list-style-type: none">• Vibrations are felt at 1000 rpm and 3000 rpm.• The following DTCs are stored in the subframe mount control module, J931 (address word BA):<ul style="list-style-type: none">○ DTC B201000 (No basic setting)○ DTC B200500 (Data record invalid) Production Solution: Optimized J931 control module software.		

45 ABS warning light on with additional warning lights on (EPB / TPMS / EPC / MIL) - wire harness damage (2033412/3)		
Model(s)	Year	Vehicle Specific Equipment
A4, S4, Q5	2009–2013	Not Applicable
A5, S5	2008–2013	Not Applicable

A5/S5 Cabriolet	2010–2013	Not Applicable
Condition:		
<ul style="list-style-type: none"> • The customer may complain of one of the following conditions: <ul style="list-style-type: none"> ○ Steering wheel does not lock. ○ Various warning lights are on. ○ Steering feels stiffer than usual. ○ The engine cannot be switched off. ○ The ignition key cannot be removed. 		
Production Solution: Improved installation procedure at the factory.		

91 Sound cuts out above 6 mph with Audi concert radio and without Bang & Olufsen (2032966/5)		
Model(s)	Year	Vehicle Specific Equipment
A4, A5, Q5	2013	Audi concert radio without Bang & Olufsen
Condition:		
<ul style="list-style-type: none"> • There is no sound (from all audio sources) when vehicle is operated above 6 to 10 mph. When the ignition is cycled and the vehicle is stationary, the audio will work until the vehicle is driven again. • Only vehicles with Audi concert radio (PR 8UQ) and standard sound system (PR 9VD) are affected. 		
Production Solution: Not applicable.		

40 Rattling or knocking noise from front end when driving over bumps (2035854/2)		
Model(s)	Year	Vehicle Specific Equipment
A4, Q5	2009–2014	Not Applicable
A5	2008–2013	Not Applicable
A5 Cab	2010–2014	Not Applicable
Condition: A rattling or knocking noise is heard when the car is driven over bumps or uneven road surfaces. This noise is heard after the car has been driven for a while and is warmed up, and when the temperature outside is warm.		
Production Solution: Not applicable.		

Pending Service Solutions

No new pending service solutions this week.

[Back to top](#)

Campaigns

No new campaigns this week.

Updates

No new updates this week.

Suggestions

Please send comments or suggestions to: aoa.workshopinformation@audi.com

[Back to top](#)

© 2014 Audi of America, Inc. All rights reserved. Information contained in this document is based on the latest information available at the time of printing and is subject to the copyright and other intellectual property rights of Audi of America, Inc., its affiliated companies and its licensors. All rights are reserved to make changes at any time without notice. No part of this document may be reproduced, stored in a retrieval system, or transmitted in any form or by any means, electronic, mechanical, photocopying, recording, or otherwise, nor may these materials be modified or reposted to other sites, without the prior expressed written permission of the publisher.