



66 Front radiator grille trim incorrect for vehicle

66 23 96 2069488/1 February 16, 2023.

Model(s)	Year	VIN Range	Vehicle-Specific Equipment
Q8, SQ8, and RS Q8	2023	000001 – 019153	Not Applicable

Condition

Customer states:

The trim that surrounds the radiator grille is the incorrect color for the intended build configuration of the vehicle.

Workshop findings:

The error in production regarding the radiator grille trim color installed is confirmed (e.g. body-colored trim intended, L1RR Platinum Grey trim installed).

Technical Background

The trim that surrounds the front radiator grille installed in production is L1RR Platinum Grey instead of the intended body-colored trim.

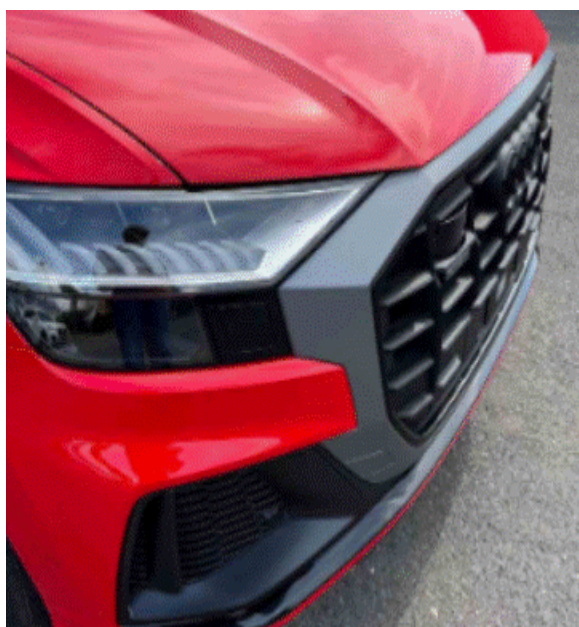


Figure 1. L1RR Platinum Grey radiator grille trim installed. Body-colored trim intended.



Figure 2 shows the correct configuration with a radiator grille trim in body color.



Figure 2. Correctly configured radiator grille trim in body color.

Production Solution

The production process has been corrected.

Service

Replace the radiator grille trim and paint in body color.

Warranty

Claim Type:	<ul style="list-style-type: none">• 110 up to 48 Months/50,000 Miles.• 910 Before Delivery.• If the vehicle is outside any warranty, this Technical Service Bulletin is informational only.
Service Number:	SK97
Damage Code:	0055
Damage Location:	056

Technical Service Bulletin



Labor Operations:	Front trim remove and reinstall (base configuration)	6601 1900	See SRT with associated operations
	-or-		
	Front trim remove and reinstall (with parking aid)	6601 1902	See SRT with associated operations
	-or-		
	Front trim remove and reinstall (with night vision camera, overhead view camera, radar sensor and parking aid)	6601 1904	See SRT with associated operations
	-or-		
	Front trim remove and reinstall (RSQ8)	6601 1905	See SRT with associated operations
	If painted at the dealer:		
	Body prepare painting	5101 7163	See SRT with associated operations
	Radiator grille paint new part	6605 6150	See SRT with associated operations
If painted at body shop:			
Radiator grille paint new part (Sublet Labor Operation listed in Outside Labor)	L0011600 (Solid Paint) L0021600 (Metallic Paint) L0031600 (Pearl Paint)	Max 170 TU	
Diagnostic Time:	GFF (Only if Driver's Assistance System calibration is required)	0150 0000	Time stated on the diagnostic protocol (Max 30 TU)
	Road test prior to the service procedure	No allowance	0 TU



Technical Service Bulletin



	Road test after the service procedure (Only if Driver's Assistance System calibration is required)	0121 0004	10 TU
Claim Comment:	As per TSB 2069488/1		

All warranty claims submitted for payment must be in accordance with the *Audi Warranty Policies and Procedures Manual*. Claims are subject to review or audit by Audi Warranty.

Required Parts and Tools

Always check with your Parts Department and/or ETKA for the latest information and parts bulletins.		
Part Number	Part Description	Quantity
4M8 807 725 GRU	 Trim	1
4M8 807 241 GRU	 Cover for towing eye	1
N/A	Paint Material Listed as MATERIAL in Outside Material	Qty. 1 each \$ Cost of Material (Max \$36)

Additional Information

All parts and service references provided in this TSB (**2069488**) are subject to change and/or removal. ©2023 Audi of America, Inc. All rights reserved. The information contained in this document is based on the latest information available at the time of printing and is subject to the copyright and other intellectual property rights of Audi of America, Inc., its affiliated companies, and its licensors. All rights are reserved to make changes at any time without notice. No part of this document may be reproduced, stored in a retrieval system, or transmitted in any form or by any means, electronic, mechanical, photocopying, recording, or otherwise, nor may



these materials be modified or reposted to other sites, without the prior expressed written permission of the publisher.