



# Service Bulletin

Bulletin No.: 13-03-10-001J

Date: February, 2023

## INFORMATION

**Subject:** Information on Summer Tire Performance and Tire Cold Weather Cracking

**Models:** 2012-2017 Buick Regal GS  
2014-2015 Cadillac CTS Vsport  
2016-2019 Cadillac ATS-V, CTS-V  
2020-2023 Cadillac CT4-V, CT5-V  
2012-2015 Chevrolet Camaro ZL1  
2013-2015 Chevrolet Camaro SS with RPO 1LE  
2014-2015 Chevrolet Camaro Z/28  
2016-2023 Chevrolet Camaro SS, ZL1 and 1LE (RPO A1X, A1Y, A1Z)  
2014-2017 Chevrolet SS  
2014-2019 Chevrolet Corvette, Z06, Grand Sport, ZR1  
2020-2023 Chevrolet Corvette

**Attention:** Advise customers of these vehicles that they are equipped with a high performance summer-only tire that will have reduced traction performance at temperatures below approximately 40°F (5°C). GM recommends installing winter tires if driving below these temperatures. Avoid driving, moving, or test-driving vehicles equipped with high performance summer-only tires below 20°F (-7°C), as operating at these temperatures can cause damage to the tires. This bulletin also applies to any of the above models that may be Export vehicles.

This bulletin has been revised to add the 2023 Model Year to CT4-V, CT5-V and certain Camaro, Corvette models, remove Z51 references for Corvette and update information under 2014-2019 Corvette, Corvette Z06, Corvette Grand Sport, Corvette ZR1; 2020-2023 Corvette. Please discard Corporate Bulletin Number 13-03-10-001I.

### Cold Weather Operation

The vehicles referenced above are all equipped with 3 season performance tires commonly referred to as "Summer Tires."

The rubber used in these tires loses flexibility and may develop surface cracks (1) in the tire tread/shoulder area at colder temperatures. Refer to the photos below for examples.

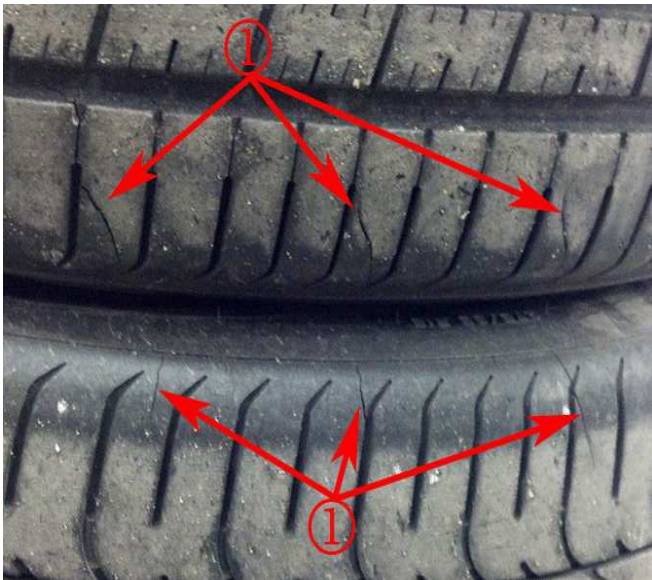
Surface cracks are cosmetic and will not result in a loss of air, however special tread and compounds used on these performance tires will cause a decrease in performance in cold climates. Driving with high performance summer tires on snow, ice or cold road surfaces may cause loss of control.

**Important:** While the cracking will not result in air loss, it is damaging to the tire. Tires that have been used in cold climates and exhibit tread cracks should be discarded.

### Tire Surface Cracks



3274901



3701321

#### 2014-2015 Cadillac CTS Vsport

The 2014 and 2015 Cadillac CTS Vsport is equipped with 245/40R18 and 275/35R18 Pirelli P-Zero Nero (RPO RKK) ultra-high performance summer tires.

Please advise customers that this vehicle is equipped with an ultra-high performance summer tire that will have reduced traction performance at temperatures below approximately 5°C (40°F). GM recommends installing winter tires if driving below these temperatures.

**Avoid driving, moving, or test-driving CTSs equipped with Pirelli P-Zero Nero (RPO RKK) tires below -7°C (20°F) as operating at these temperatures can cause damage to the tires.**

Refer to the latest version of Service Bulletin #04-03-10-013: Driving Characteristics of Rear Wheel Drive Vehicles and Available Winter Tires for further information on available replacement winter tires for

cold climate operation. Additionally, dealers in the United States may call the GM Tire Program at 877-728-4737 for help with late season tire availability or substitutions.

#### 2020-2023 Cadillac CT4-V and CT5-V

The 2020 and 2021 Cadillac CT4-V and CT5-V are equipped with 235/40R18 (Q4C) and 245/40Z19 (QBK) summer tires.

Please advise customers that these vehicles are equipped with a summer tire that will have reduced traction performance at temperatures below approximately 5°C (40°F). GM recommends installing winter tires if driving below these temperatures.

Avoid driving, moving, or test-driving these vehicles with these tires below -7°C (20°F) as operating at these temperatures can cause damage to the tires.

Refer to the latest version of Service Bulletin #04-03-10-013: Driving Characteristics of Rear Wheel Drive Vehicles and Available Winter Tires for further information on available replacement winter tires for cold climate operation. Additionally, dealers in the United States may call the GM Tire Program at 877-728-4737 for help with late season tire availability or substitutions.

#### 2012-2015 Camaro Models RPO (ZL1, 1LE or Z28); 2016-2023 Camaro SS, ZL1 and 1LE

2012-2015: The Camaro ZL1 and RPO 1LE vehicles come with 285/35ZR20 and/or 305/35ZR20 Goodyear F1 Supercar G2 D.O.T. approved ultra high performance, track capable summer tires as standard equipment.

2014-2015: The Camaro Z/28 is equipped with 305/30ZR19 Pirelli P Zero Trofeo R of similar capabilities.

2016-2023: The SS, ZL1 and models equipped with 1LE package (RPOs A1X, A1Y or A1Z) are equipped with Summer tires. These tires (RPOs R0F, R0G and R6O) have reduced capability below 5°C (40°F) and it is recommended that suitable winter tires be fitted below this temperature.

All of these Camaro models tires are not intended to be driven on snow, ice or road surfaces below -7°C (20°F).

For ZL1, Z28 and SS 1LE - If the ambient temperature in your location is at or below -7°C (20°F), **DO NOT MOVE THIS VEHICLE**. Driving the vehicle when the temperature is below -7°C (20°F) may result in surface cracks in the tread area of the tire.

Refer to the latest version of Service Bulletin #04-03-10-013: Driving Characteristics of Rear Wheel Drive Vehicles and Available Winter Tires for further information on available replacement winter tires for cold climate operation.

#### 2014-2019 Corvette, Corvette Z06, Corvette Grand Sport, Corvette ZR1; 2020-2023 Corvette

The 2014-2019 Corvette is equipped with Michelin Pilot Super Sport ZP Runflat tires or Michelin Pilot Sport Cup 2 ZP tires. The 2020-2023 Corvettes may be equipped with Michelin Pilot Sport 4S ZP or Michelin Cup2 R run flat tires. These tires are ultra high performance, track capable summer only tires.

These tires have reduced capability below 5°C (40°F) and it is recommended that suitable winter tires be fitted below this temperature.

**Avoid driving, moving, or test-driving Corvettes equipped with Michelin Pilot Super Sport ZP and Pilot Sport 4S ZP tires below -7°C (20°F) as operating at these temperatures can cause damage to the tires.**

Refer to the latest version of Service Bulletin #04-03-10-013: Driving Characteristics of Rear Wheel Drive Vehicles and Available Winter Tires for further information on available replacement winter tires for cold climate operation.

#### **2014-2017 Chevrolet SS**

The 2014–2017 SS is equipped with Bridgestone ultra-high performance summer tires.

This tire has reduced capability below 5°C (40°F) and it is recommended that suitable winter tires be fitted below this temperature.

Refer to the latest version of Service Bulletin #04-03-10-013: Driving Characteristics of Rear Wheel Drive Vehicles and Available Winter Tires for further information on available replacement winter tires for cold climate operation.

#### **2012-2017 Buick Regal GS, 2016-2017 Cadillac ATS-V and CTS-V**

The 2012-2017 Regal GS, 2016-2017 Cadillac ATS-V and CTS-V are equipped with ultra-high performance summer tires.

This tire has reduced capability below 5°C (40°F) and it is recommended that suitable winter tires be fitted below this temperature.

Refer to the latest version of Service Bulletin #04-03-10-013: Driving Characteristics of Rear Wheel Drive Vehicles and Available Winter Tires for further information on available replacement winter tires for cold climate operation.

#### **Tire Storage**

It is recommended that Summer tires are stored indoors at temperatures above -7°C (20°F) when not in use. If the tires have been subjected to -7°C (20°F) or less, let them warm up in a heated space to at least 5°C (40°F) for 24 hours or more before being installed or driving a vehicle on which they are installed. Inflate the tires only after they have been warmed above 5°C (40°F). Do not place tires near heaters or heating devices used to warm the room where the tires are stored. Do not apply heat or blow heated air directly on the tires. Always inspect tires before use after being stored.

#### **Customer Information**

Please share this information with the customer, including a copy of this bulletin.