

**E3.I/G2 V8 – Oil/Air Separator Membrane Failure**

**Vehicles Affected**

Models	Model Year	Model Type	VIN Range	Vehicle-Specific Equipment
Cayenne	As of 2019	9YA, 9YB	n/a	V8 bi-Turbo engine
Panamera	As of 2017	971	n/a	V8 bi-Turbo engine

**Revision History**

Revision	Release Date	Changes
0	February 27, 2023	Original document

**Condition**

E3 Cayenne and G2 Panamera customers report a rough running engine, whistling noise, and/or check engine light displayed in the instrument cluster. It is found that the diaphragm in the oil breather line (crankcase vent tube) or the tube itself from either bank 1 or bank 2 can be cracked, causing this failure in the present V8 bi-Turbo engines.

Related Faults:

NOTE: Fault combination and sub-fault information may vary depending on engine type and DME software version.

**Area of Occurrence (DME)**

P227900 - Leak behind throttle valve, bank 1

P0300(X)00 - Random/Multiple Cylinder, Misfire Detected

**Other area of Occurrence (Instrument Cluster)**

P162400 - Engine control indicator light switched on

B19A8F0 - Display of reduced engine output, active

B19CAFO - Display of start-stop failure, active

B19ACFO - Display of fault in engine controller, active

Technical Background

The aforementioned condition can result from fatigue. An example of this issue is shown in Figure 1.

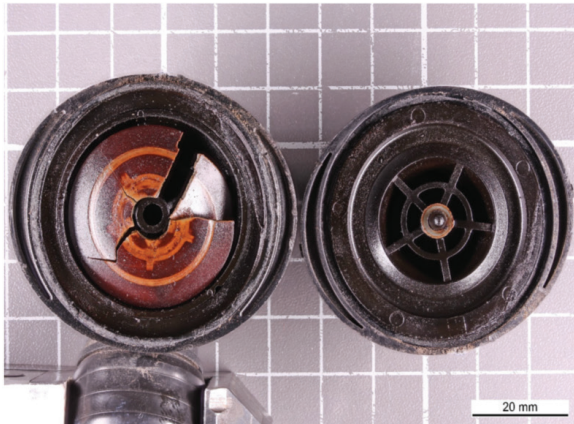


Figure 1:  
Check-valve in Oil-Air breather line showing diaphragm failure

Service Information

If the vehicle falls under the previously stated conditions, then please replace **only** the breather lines shown below in Figure 2 as "5" and "10" containing this diaphragm in the check-valve assembly, first. If related issues or fault codes persist after a test drive with the new breather lines installed, check the oil air separator for damage. Please perform these replacements in accordance with the respective workshop instructions.

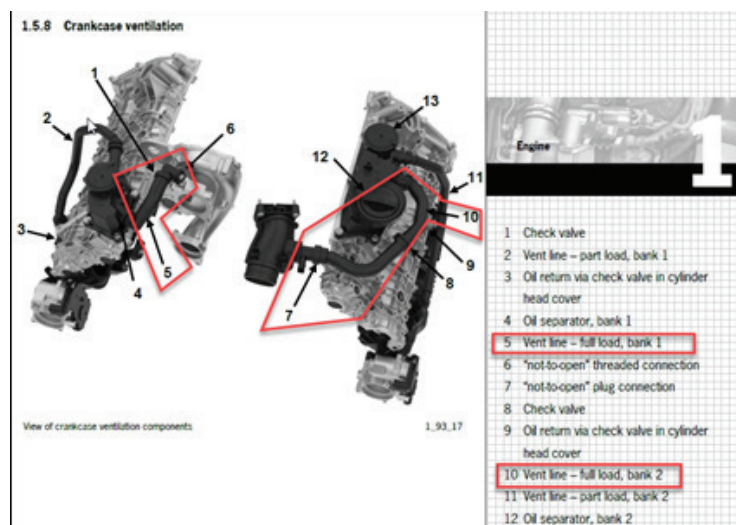


Figure 2:  
V8 (E3.I & G2) Crankcase Ventilation

### Warranty

As always, please document the repair completely in PCSS.

For this repair, please code the "cause" as follows:

Cause location: 10520 Crankcase ventilation hose

Cause symptom: 1521 Crack/Crack

### Search Items

Crankcase ventilation hose, oil/air separator, breather line, cracked valve, Cayenne E3 Turbo, P227900, P030000, G2 Panamera Turbo

---

**Important Notice:** Technical Bulletins issued by Porsche Cars North America, Inc. are intended only for use by professional automotive technicians who have attended Porsche service training courses. They are written to inform those technicians of conditions that may occur on some Porsche vehicles, or to provide information that could assist in the proper servicing of a vehicle. Porsche special tools may be necessary in order to perform certain operations identified in these bulletins. Use of tools and procedures other than those Porsche recommends in these bulletins may be detrimental to the safe operation of your vehicle, and may endanger the people working on it. Properly trained Porsche technicians have the equipment, tools, safety instructions, and know-how to do the job properly and safely. Part numbers listed in these bulletins are for reference only. The work procedures updated electronically in the Porsche PIWIS diagnostic and testing device take precedence and, in the event of a discrepancy, the work procedures in the PIWIS Tester are the ones that must be followed.

---