



Bulletin No.: PIT5930A  
Published date: 02/7/2023

## Preliminary Information

### PIT5930A Hood Paint Damage At The Edges Of The Hood Center Molding

#### Models

Brand:	Model:	Model Years:	VIN:		Engine:	Transmissions:
			from	to		
Chevrolet	Silverado 1500 New(RPO J22, VIN Digit 5 = A or D)	2022	All	All	All	All
Chevrolet	Silverado 1500	2023	All	All	All	All

Involved Region or Country	North America
RPO	ZR2 Or Trail Boss
Condition	Some customers may notice that the hood paint is damaged or chipped where the edge of the center hood molding contacts the hood, as shown below.
Cause	Insufficient clearance between the center hood molding and hood.





### Correction:

To correct this concern, perform the following repairs:

1. Remove the hood insulator blank (if equipped) and hood center molding (hood scoop) following SI Document "Hood Center Molding Replacement (ZR2 or Trail Boss)". The hood center molding will be reused.

Additional tips for removing the hood molding: When removing the center hood molding, the 14 plastic push retainers that hold it on will be damaged and need to be replaced with updated retainers. Caution - The hood is made from aluminum and can be damaged easily using pry tools during hood molding removal. After removing the 8 Center Hood Molding Nuts, from underneath the hood, cut the end features off of the exposed plastic push retainers with a side cutter or flush cut pliers. Some hood molding push retainers can be accessed through the holes in the hood structure and the end feature can be cut off with a sharp gasket scraper or putty knife. The end features for all push retainers should be cut off except the 6 push retainers across the front edge of the hood molding. The 6 remaining push retainers can be cut using the sharp gasket scraper/putty knife from the top side of the hood by lifting the hood molding and working from the front or rear. If necessary, protect the hood surface as required. Working from the front or rear edge of the hood molding, slide the sharp gasket scraper/putty knife under the edge of the hood molding and cut off the 6 remaining push retainers. See example pictures below.



2. With the hood molding removed, remove all of the foam from the underside of the hood molding.
3. Refinish the hood as needed to correct the paint that has been damaged.

**Note:** An additional line may need to be added to the RO for hood refinish.

4. Obtain a roll of adhesive backed solid neoprene rubber tape that is at least 1/2" wide and 1/16" thick, but no thicker. One known source for this tape is from Amazon, search "[https://www.amazon.com/dp/B09VXRXPW?psc=1&ref=ppx\\_yo2ov\\_dt\\_b\\_product\\_details](https://www.amazon.com/dp/B09VXRXPW?psc=1&ref=ppx_yo2ov_dt_b_product_details)". The tape comes in a package of 2 and one roll will complete one truck with some left over.

5. Cut the tape into several 20 mm and 30-40 mm long pieces. You will be using a combination of each length of tape to place on the hood around the perimeter where the hood center molding mounts, as shown below in the following steps.

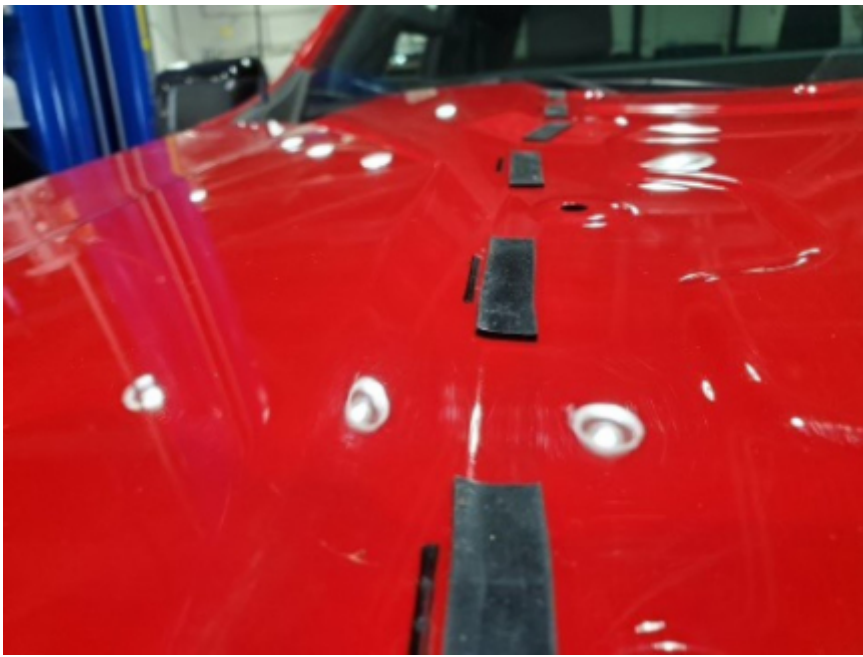
6. The hood has an indentation stamped into it that outlines the perimeter of the center hood molding. For clarity, this hood indentation, has been marked on the hood with a black marker to better show the hood indentation, as seen in the photo below. Using an alcohol wipe, clean the painted hood surface along the perimeter where the center hood molding mounts, to remove any grease, oil, wax, and dirt. Make sure to wipe the area from the hood indentation inboard approximately 15mm. There is no need to clean/wipe along the back edge of the hood as no tape will be placed in that area.



7. Next, using a combination of the different length pieces of tape, place them on the hood with the sticky side down against the paint following the hood indentation, as shown below. Place the tape with the outer tape edge 1 to 2mm from the edge of the hood indentation, as shown below. Along each side, stop the tape 10mm from the rear edge of the hood.







8. Install 14 new center hood molding push retainers (GM P/N 11547581) onto the center hood molding.
9. Reinstall the center hood molding following the SI procedure "Hood Center Molding Replacement (ZR2 or Trail Boss)".
10. After repairs are complete the center hood molding should have about .5 - 1 mm of clearance from the hood surface all the way around, as shown.



### Parts Information

Description	Part Number	Qty
Adhesive Backed Solid Neoprene Rubber Tape	Obtain locally or from Amazon by searching: <a href="https://www.amazon.com/dp/B09VXRXPW?psc=1&amp;ref=ppx_yo2ov_dt_b_product_details">https://www.amazon.com/dp/B09VXRXPW?psc=1&amp;ref=ppx_yo2ov_dt_b_product_details</a>	1
Hood Molding Push Retainers	11547581	14

### Warranty Information

For vehicles repaired under the Bumper-to-Bumper coverage (Canada Base Warranty coverage), use the following labor operation. Reference the Applicable Warranties section of Investigate Vehicle History (IVH) for coverage information.

Labor Operation	Description	Labor Time
*1488508	Perform Center Hood Molding tape rework with new revised push retainers	1.5 Hrs.
1441154	Hood Partial Refinish Color/Clear Coat	Use Published Time
*This is a unique Labor Operation for Bulletin use only.		

### Additional SI Keywords

scoop

## Version History

Version	2
Modified	07/14/2022 - Created on. 02/07/2023 - Update to the Condition, Cause, Correction, Parts and Warranty sections



© 2023 General Motors. All Rights Reserved.