

REFERENCE:	Nova Bus Manuals
SECTION:	12: Interior Furnishing
RS N°:	MQR 7621-2414
EFFECTIVE IN PROD.:	NA

APPLICATION DEADLINE: 2024MA10
CLAIM REFERENCE NUMBER: WB-5356

SUBJECT:	Lexan panels cracking at mounting holes.
JUSTIFICATION:	Need to change the attachment of Lexan panels due to apparent cracks observed in production.

LEVEL	DESCRIPTION	DIRECT CHARGES		TIME
		LABOUR	MATERIAL	
1	Inspection and Installation of Lexan panel cracking at mounting holes.	Nova Bus	Nova Bus	3 hr
2	–	–	–	–

MATERIAL REQUIRED PER VEHICLE

QTY	PART N°	REV.	DESCRIPTION
LEVEL 1			
12	N67402	–	Grommet 5/16IDX11/16ODX 7/16TH
12	N15548	–	Screw Pan M/S CR 1/4-20 X 1 SS
LEVEL 2			
1	N97839	–	Panel Lexan FRT 2ND Door REINF
1	N97853	–	Panel Lexan RH Rear Door
1	N97880	–	Panel Lexan LH RR Door W/CHIME

Materials will be available within 46 days once your order has been placed.

To order, please contact novabus.parts@volvo.com

Or by phone for CANADA 1-800-771-6682, for USA 1-877-999-8808

Specify document number, quantity of parts required and shipping address.

DISPOSAL OF PARTS

REMOVED PARTS ARE:	DISCARDED *	RETAINED	* Dispose of the unused parts and the defective parts in accordance with local environmental standards in effect.
	Yes	–	

REVISION HISTORY

REV.	DATE	CHANGE DESCRIPTION	WRITTEN BY
NR	2023MR09	Initial release	Rajendra N M

APPROVED BY:

PAGE 1 OF 6

CLIENT	ORDER	ROAD NUMBER		VIN (2NVY/4RKY...)		QTY
		FROM	TO	FROM	TO	
Maryland Transit Authority - MTA	LB82	20001	20001	L82J8K9777273	L82J8K9777273	1
Maryland Transit Authority - MTA	LC27	20002	20002	L82JXL9777602	L82JXL9777602	1
Maryland Transit Authority - MTA	LC27	20003	20030	L82J8L9777629	L82J4L9777658	28
Maryland Transit Authority - MTA	LD82	21004	21005	L82J5M9777962	L82J7M9777963	2
Maryland Transit Authority - MTA	LD82	21007	21007	L82J0M9777965	L82J0M9777965	1
Maryland Transit Authority - MTA	LD82	21012	21013	L82J8M9777986	L82JXM9777987	2
Maryland Transit Authority - MTA	LD82	21021	21021	L82J2M9778017	L82J2M9778017	1
Maryland Transit Authority - MTA	LD82	21036	21036	L82J4M9778049	L82J4M9778049	1
Maryland Transit Authority - MTA	LD82	21054	21054	L82J2M9778096	L82J2M9778096	1
Maryland Transit Authority - MTA	LD82	21056	21059	L82J6M9778098	L82J2M9778101	4
Maryland Transit Authority - MTA	LD82	21061	21070	L82J6M9778103	L82J9M9778127	10

Tools Required

- Screwdriver
- Socket
- Alcohol / isopropyl
- Soft bristle brush



NOTE

Do not use any Loctite or superglue on the grommets or hardware.



WARNING

FOLLOW YOUR INTERNAL SAFETY PROCEDURES.

PROCEDURE

- 1.1. Park the vehicle on an even surface with the transmission on neutral.
- 1.2. Apply the parking brake and set the master control switch to the **stop** position.
- 1.3. Set the battery disconnect switch in the battery compartment to the **off** position.
- 1.4. Locate grommets to replace inside the bus (see figure 1).

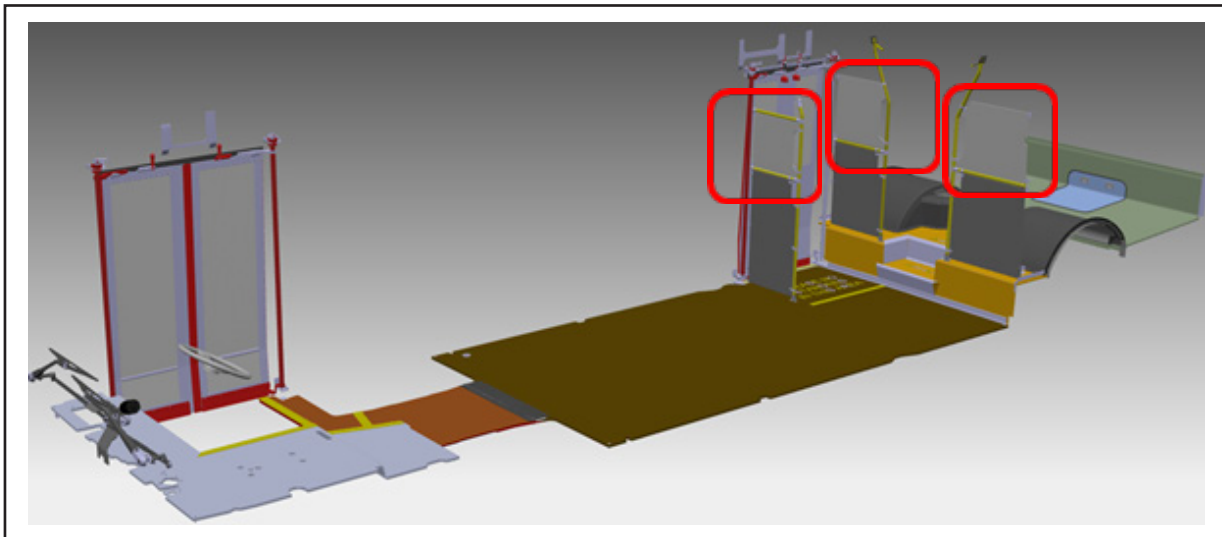


Figure 1 - Location of Grommets inside the bus

- 1.5. Remove the old grommets in the 4 corners of each exan panel (see figure 2).

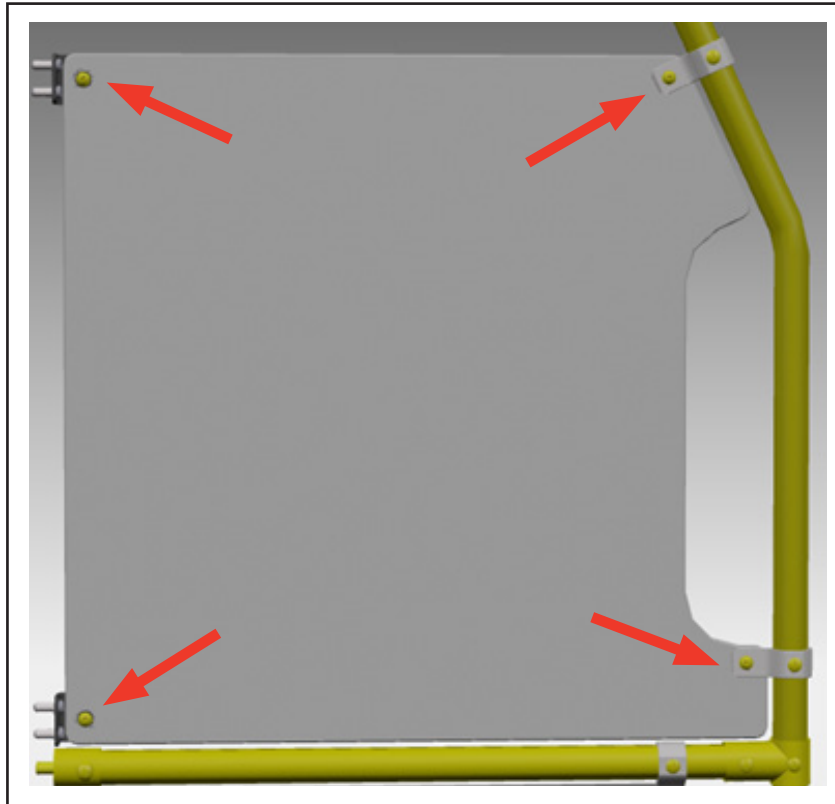


Figure 2 - Removal of Old grommet on the Lexan Panel

- 1.6. Inspect the lexan panels for cracking around the corners where the brackets are mounted to the lexan panels. Replace lexan panel if there are any visible cracks, use level 2 BOM (see figure 3).

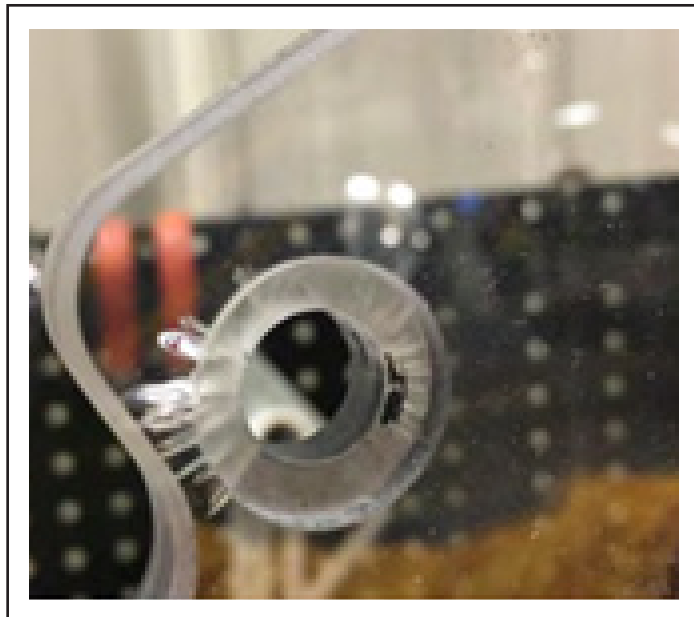


Figure 3 - Cracks on the Lexan Panel

- 1.7. Once grommet has been removed, if original lexan panel has no cracks, clean the area using alcohol, remove all residual material from the holes on the lexan panels, a soft bristle brush can be used to help get the remaining residue (see figure 4).

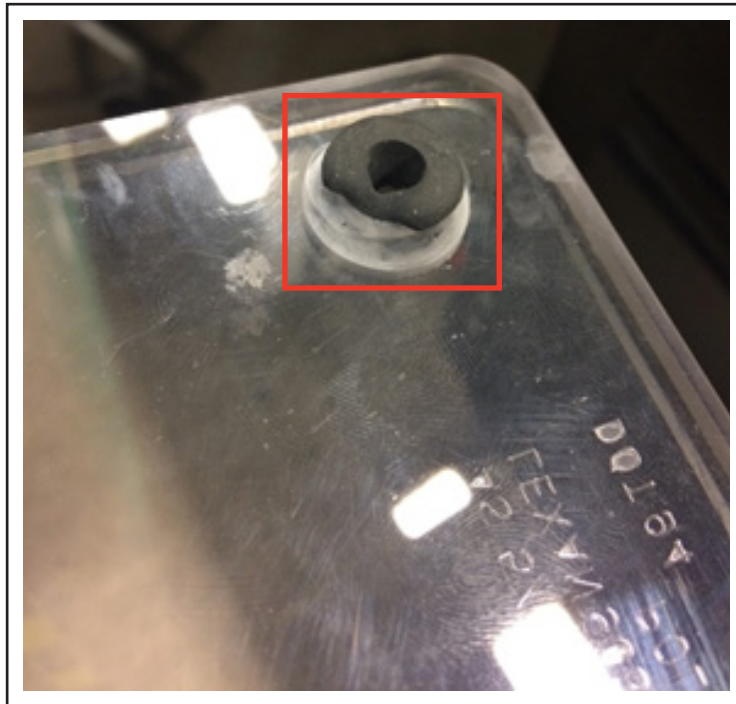


Figure 4 - View of grommet on the Lexan Panel

- 1.8. Insert the new grommet P/N N67402 and install new screw P/N N15548 for all panels , reuse existing washers and nuts (see figure 5).

**NOTE**

Hand tighten only, do not use power tools.

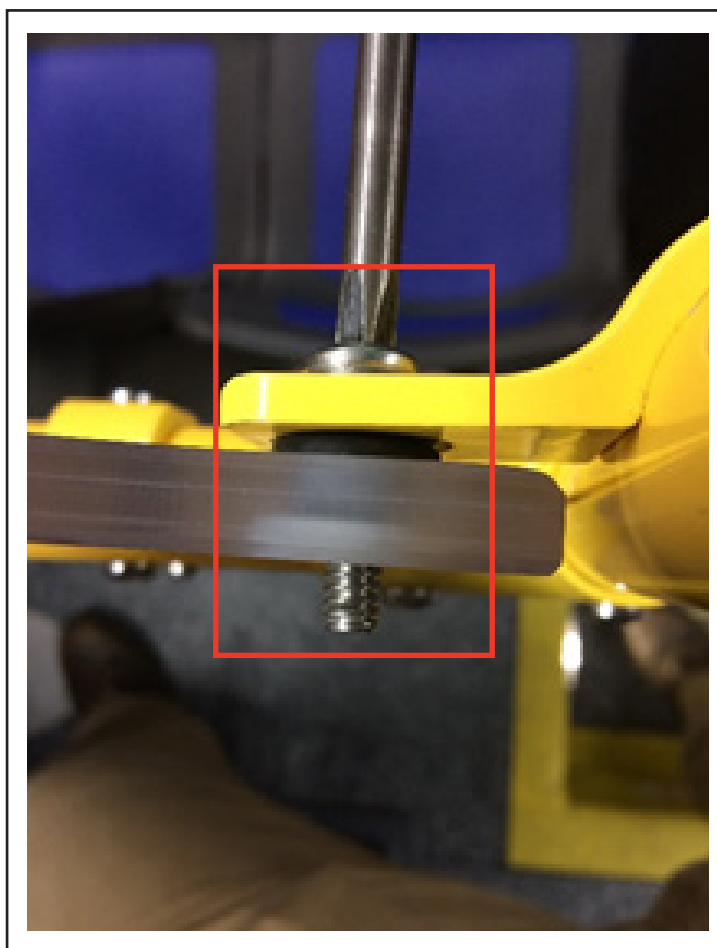


Figure 5 - Installation of Screw and Washer

- 1.9. Set the battery disconnect switch in the battery compartment to the ON position.
- 1.10. Return the bus to service.❖