

REFERENCE:	Nova Bus Manuals
SECTION:	12:Interior Furnishing
RS N°:	MQR 7621-2414
EFFECTIVE IN PROD.:	NA

APPLICATION DEADLINE: 2024MA10  
CLAIM REFERENCE NUMBER: WB-5357

SUBJECT:	Lexan panels cracking at mounting holes.
JUSTIFICATION:	Need to change the attachment of Lexan panels due to apparent cracks observed in production.

LEVEL	DESCRIPTION	DIRECT CHARGES		TIME
		LABOUR	MATERIAL	
1	Inspection and Installation of Lexan panel cracking at mounting holes.	Nova Bus	Nova Bus	5 hr
2	–	–	–	–

#### MATERIAL REQUIRED PER VEHICLE

QTY	PART N°	REV.	DESCRIPTION
<b>LEVEL 1</b>			
20	N67402	–	Grommet 5/16IDX11/16ODX 7/16TH
20	N15548	–	Screw Pan M/S CR 1/4-20 X 1 SS
<b>LEVEL 2</b>			
1	N97853	–	Panel Lexan RH Rear Door
1	N97880	–	Panel Lexan LH RR Door W/CHIME
1	N97913	–	Panel Lexan RH Front 3RD Door
1	N97888	–	Panel Lexan RH RR 2ND Door
1	N97889	–	Panel Lexan LH RR 2ND Door W/CHI

Materials will be available within 46 days once your order has been placed.

To order, please contact [novabus.parts@volvo.com](mailto:novabus.parts@volvo.com)

Or by phone for CANADA 1-800-771-6682, for USA 1-877-999-8808

Specify document number, quantity of parts required and shipping address.

#### DISPOSAL OF PARTS

REMOVED PARTS ARE:	DISCARDED	RETAINED	* Dispose of the unused parts and the defective parts in accordance with local environmental standards in effect.
	*		
	Yes	–	

#### REVISION HISTORY

REV.	DATE	CHANGE DESCRIPTION	WRITTEN BY
NR	2023MR09	Initial release	Nandan B S

APPROVED BY:

PAGE 1 OF 6

CLIENT	ORDER	ROAD NUMBER		VIN (2NVY/4RKY...)		QTY
		FROM	TO	FROM	TO	
Maryland Transit Authority - MTA	LB83	20031	20031	S92J9K9777288	S92J9K9777288	1
Maryland Transit Authority - MTA	LC28	20032	20070	S92J5L9777628	S92J3L9777689	39

## Tools Required

- Screwdriver
- Socket
- Alcohol / isopropyl
- Soft bristle brush



### NOTE

Do not use any Loctite or superglue on the grommets or hardware.



### WARNING

FOLLOW YOUR INTERNAL SAFETY PROCEDURES.

## PROCEDURE

- 1.1. Park the vehicle on an even surface with the transmission on neutral.
- 1.2. Apply the parking brake and set the master control switch to the **stop** position.
- 1.3. Set the battery disconnect switch in the battery compartment to the **off** position.
- 1.4. Locate grommets to replace inside the bus (see figure 1).

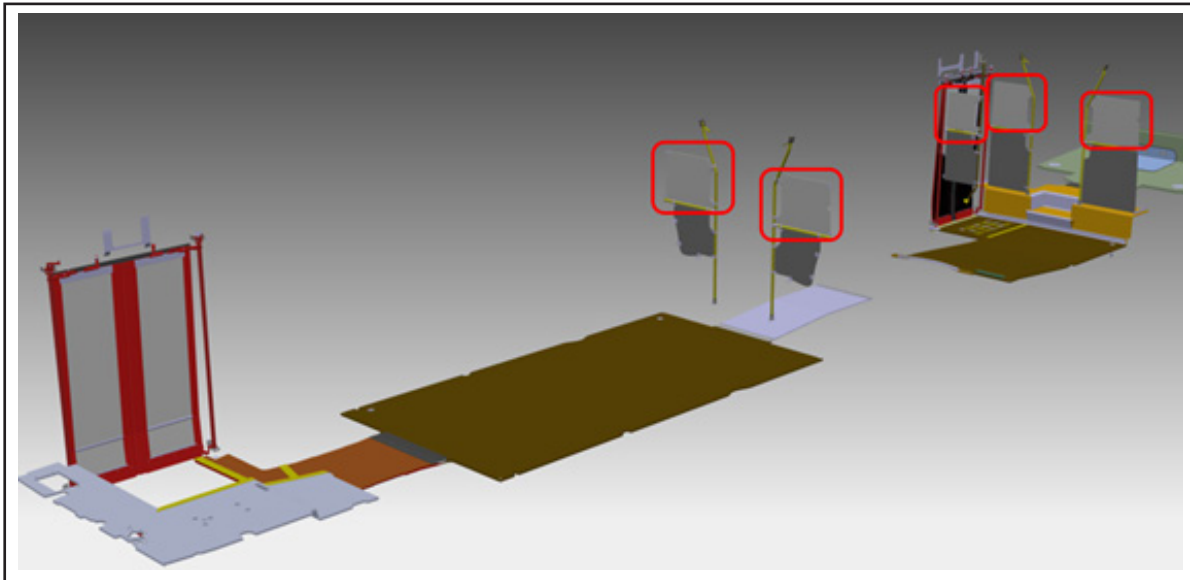
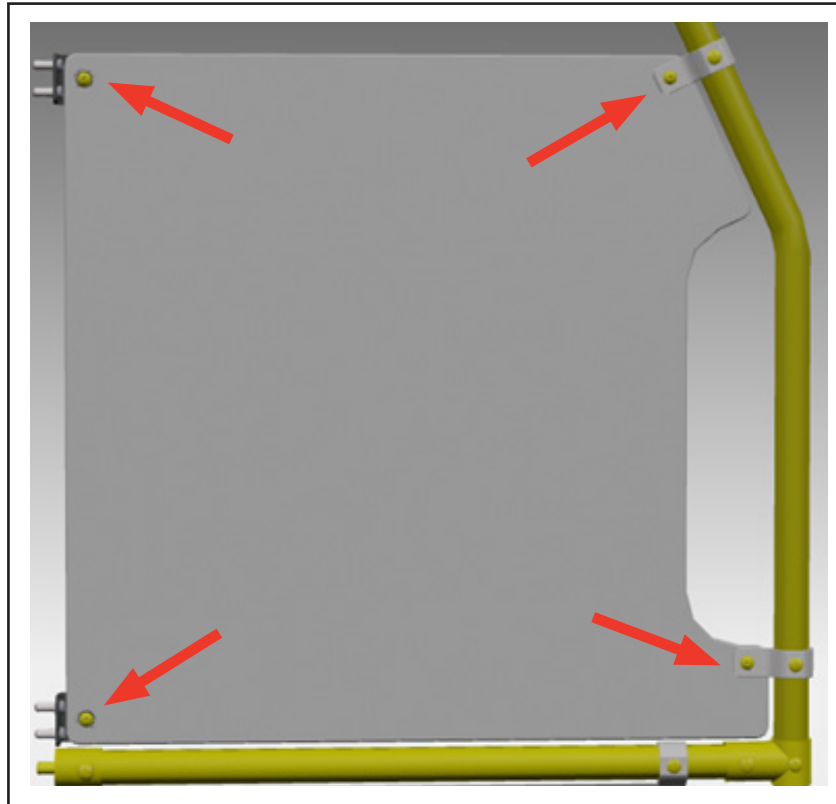


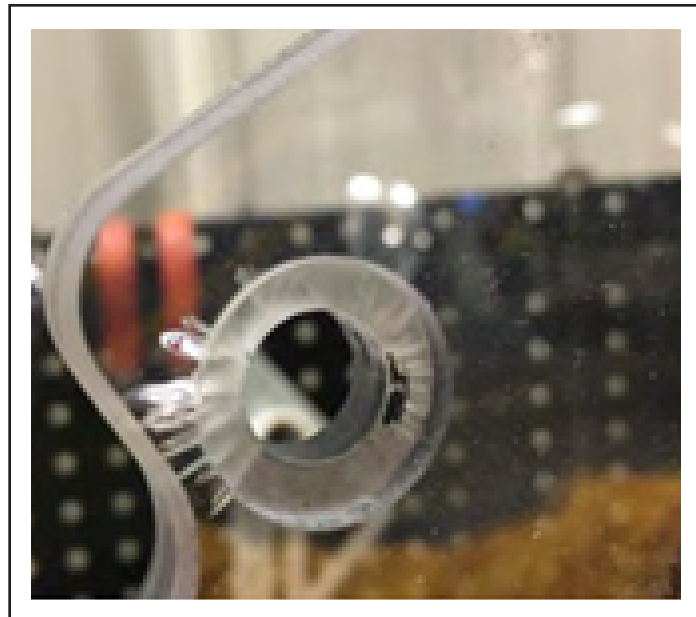
Figure 1 - Location of Grommets inside the bus

- 1.5. Remove the old grommets in the 4 corners of each lexan panel (see figure 2).



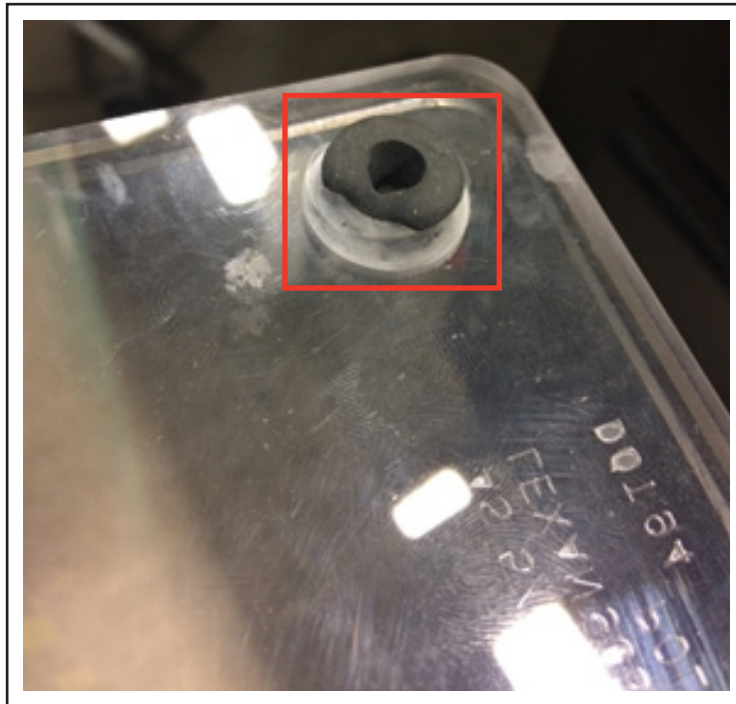
*Figure 2 - Removal of Old grommet on the Lexan Panel*

- 1.6. Inspect the lexan panels for cracking around the corners where the brackets are mounted to the lexan panels. Replace lexan panel if there are any visible cracks, use level 2 BOM (see figure 3).



*Figure 3 - Cracks on the Lexan Panel*

- 1.7. Once grommet has been removed, if original lexan panel has no cracks, clean the area using alcohol, remove all residual material from the holes on the lexan panels, a soft bristle brush can be used to help get the remaining residue (see figure 4).

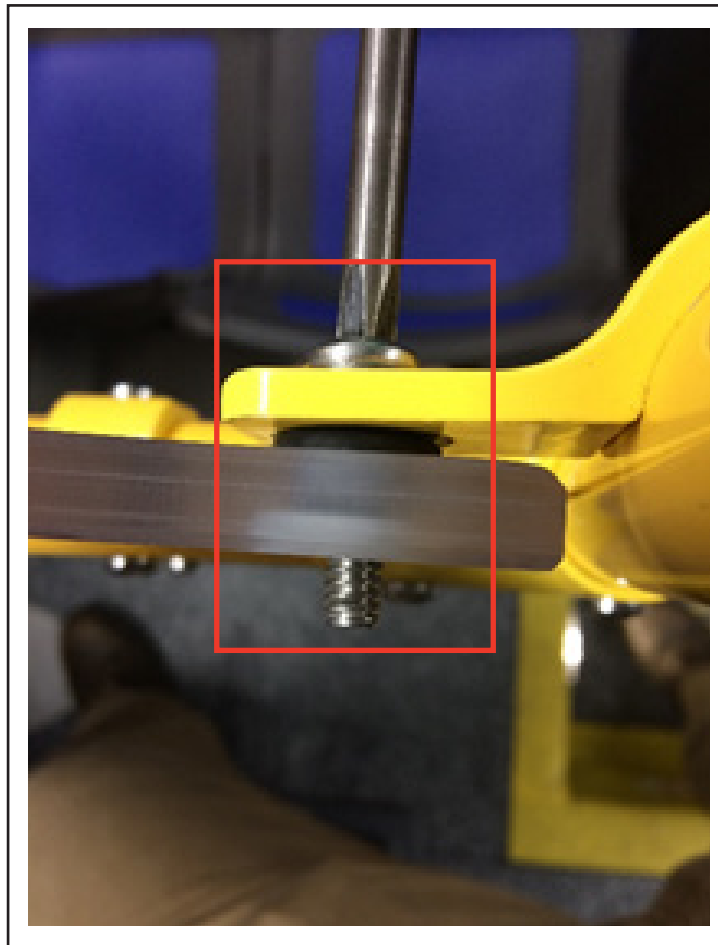


*Figure 4 - View of grommet on the Lexan Panel*

- 1.8. Insert the new grommet P/N N67402 and install new screw P/N N15548 for all panels , reuse existing washers and nuts (see figure 5).

**NOTE**

Hand tighten only, do not use power tools.



*Figure 5 - Installation of Screw and Washer*

- 1.9. Set the battery disconnect switch in the battery compartment to the ON position.
- 1.10. Return the bus to service.❖