

REFERENCE:	Nova Bus Manuals
SECTION:	10: Transmission and control
RS N°:	MQR 7621-2275
EFFECTIVE IN PROD.:	NA

APPLICATION DEADLINE: 2025JA31
CLAIM REFERENCE NUMBER: WB-5361

SUBJECT:	Coolant pipe assy failing.
JUSTIFICATION:	The adaptor on the Coolant pipe assembly between the engine and circulation pump broke in service at the beginning of the copper thread.

LEVEL	DESCRIPTION	DIRECT CHARGES		TIME
		LABOUR	MATERIAL	
1	Inspection of adaptor.	Nova Bus	–	0.25 hr
2	Installation of adaptor.	Nova Bus	Nova Bus	1.5 hr

MATERIAL REQUIRED PER VEHICLE

QTY	PART N°	REV.	DESCRIPTION
LEVEL 1			
–	–	–	–
LEVEL 2			
1	N79945	–	Pipe assy ORS-M-20/NPT-M-12
SHOP SUPPLIES			
3 ml	N37086	A	Loctite Thread sealant 565 1ea= 50ml (2 bottles for the campaign)

Materials will be available within 248 days once your order has been placed.

To order, please contact novabus.parts@volvo.com

Or by phone for CANADA 1-800-771-6682, for USA 1-877-999-8808

Specify document number, quantity of parts required and shipping address.

DISPOSAL OF PARTS

REMOVED PARTS ARE:	DISCARDED *	RETAINED	* Dispose of the unused parts and the defective parts in accordance with local environmental standards in effect.
	Yes	–	

REVISION HISTORY

REV.	DATE	CHANGE DESCRIPTION	WRITTEN BY
NR	2023FE27	Initial release	Nandan B S

APPROVED BY:

PAGE 1 OF 5

CLIENT	ORDER	ROAD NUMBER		VIN (2NVY/4RKY...)		QTY
		FROM	TO	FROM	TO	
New York City Transit New York - NYCT Demo	LD23	9620	9622	L82LXL9777634	L82L5L9777668	3
New York City Transit New York - NYCT	LC79	9623	9703	L82L1M9777782	L82LXM9777862	81
New York City Transit New York - NYCT	LC79	9704	9784	L82L1M9777863	L82L4M9777954	81
New York City Transit New York - NYCT	LD64	9785	9805	L82L0M9777871	L82L5M9777980	21
New York City Transit New York - NYCT	LD64	9806	9806	L82L7M9777981	L82L7M9777981	1
New York City Transit New York - NYCT	LD64	9807	9811	L82LXM9777988	L82L1M9777992	5
New York City Transit New York - NYCT	LD64	9812	9812	L82L3M9777993	L82L3M9777993	1
New York City Transit New York - NYCT	LD64	9813	9828	L82L5M9777994	L82L7M9778015	16
New York City Transit New York - NYCT	LD64	9829	9832	L82L4M9778022	L82LXM9778025	4
New York City Transit New York - NYCT	LD64	9833	9843	L82L1M9778026	L82LXM9778039	11
New York City Transit New York - NYCT	LD64	9844	9844	L82L1M9778043	L82L1M9778043	1
New York City Transit New York - NYCT	LD64	9845	9910	L82L3M9778044	L82L1M9778155	66

**WARNING**

FOLLOW YOUR INTERNAL SAFETY PROCEDURES.

PROCEDURE

- 1.1. Park the vehicle on an even surface with the transmission on neutral.
- 1.2. Apply the parking brake and set the master control switch to the **stop** position.
- 1.3. Set the battery disconnect switch in the battery compartment to the **off** position.
- 1.4. Lift the rear 5 seat and remove the engine access trap (see figure 1).

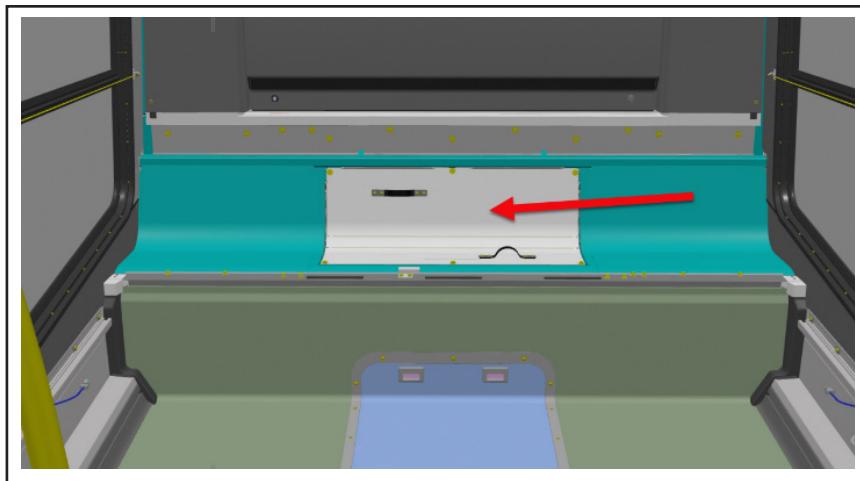


Figure 1 - Location of Engine Access Trap

- 1.5. Locate and inspect the adaptor located between the elbow and the copper pipe (see figure 2).

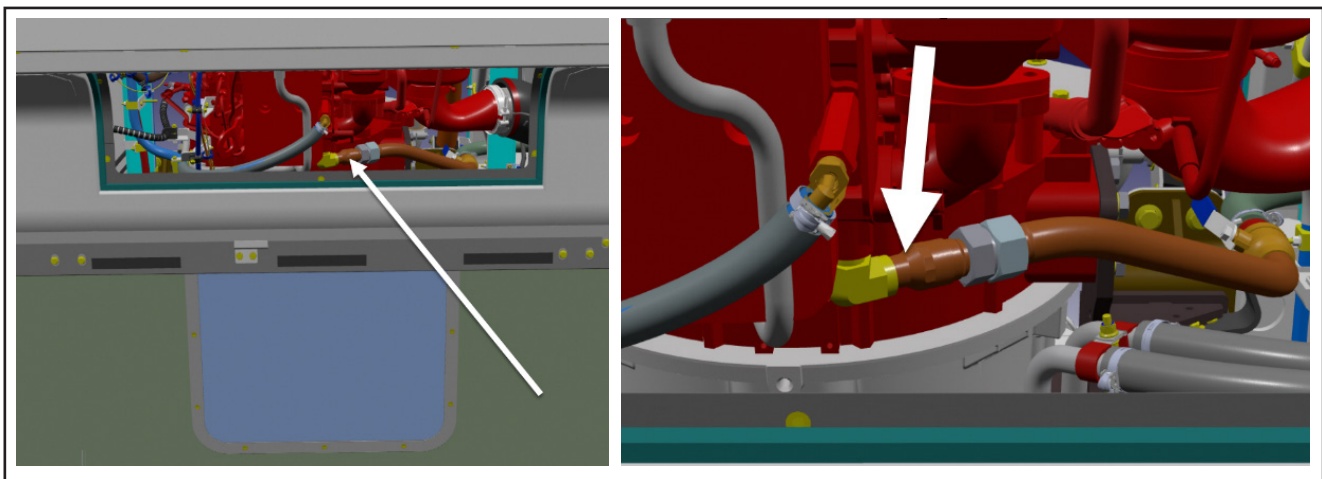


Figure 2 - View of Adaptor between Elbow and Copper pipe

- 1.6. Check for any sign of crack initiation, leakage at the bottom of the threads or at the geometry change of the adaptor and replace if found (see figure 3).

**NOTE**

FOLLOW MAINTENANCE MANUAL LD64, SECTION 09: ENGINE COOLING SYSTEM FOR DRAIN AND FILL PROCEDURES.

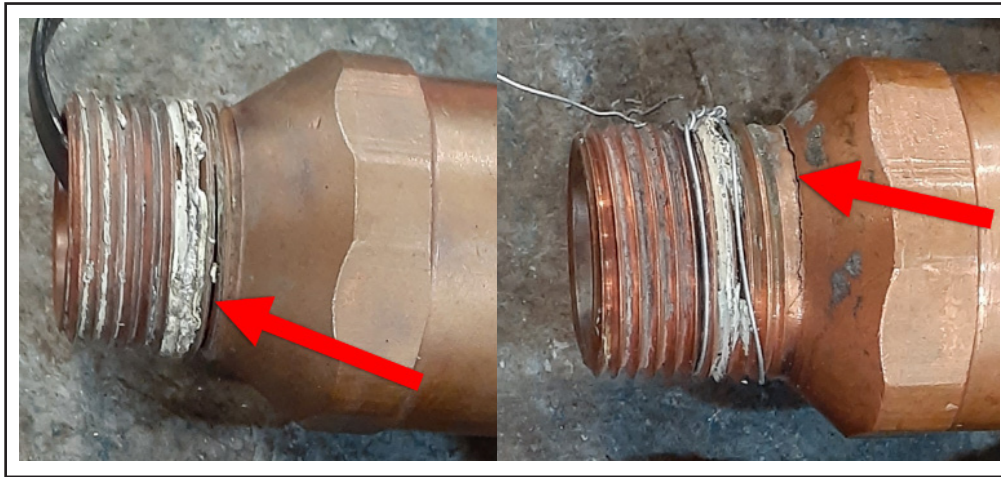


Figure 3 - View of Cracked Adaptor

- 1.7. Apply Loctite 565 thread sealant on the new adaptor (NPT end only) (see figure 4).

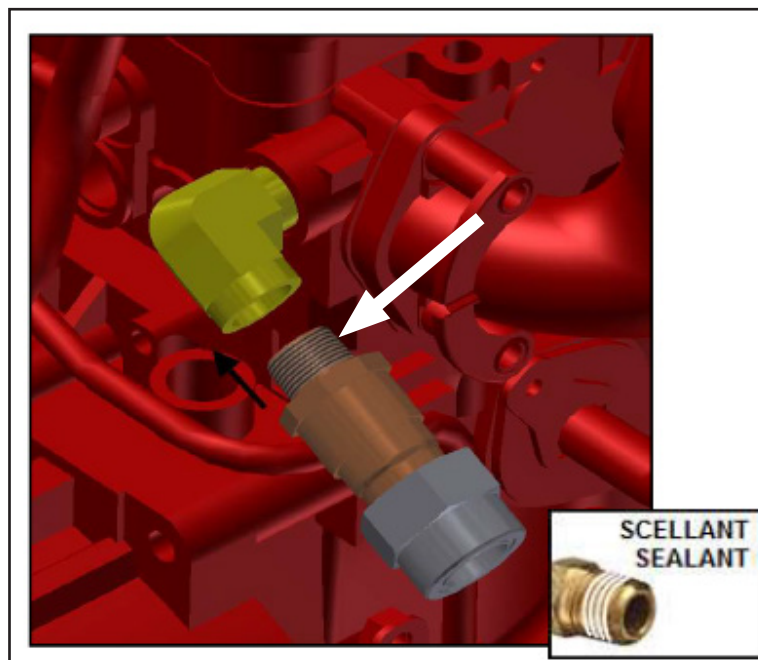


Figure 4 - Apply Loctite

- 1.8. Hand tighten the adaptor in the elbow and add an extra 1.5 turn.
- 1.9. Make sure O-ring is positioned in the groove of the adaptor ORS end and connect the copper pipe.
- 1.10. Apply torque pipe nut to 128-142 Nm (see figure 5).

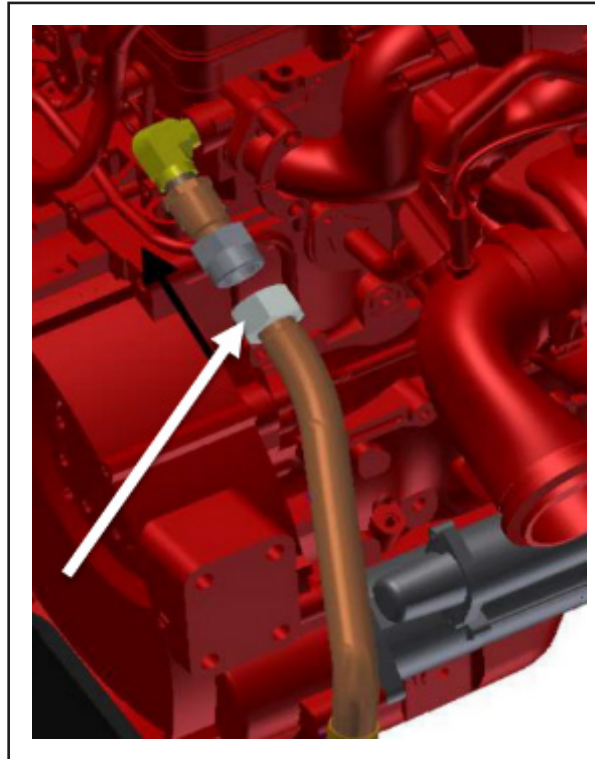


Figure 5 - Apply torque to pipe nut

- 1.11. Fill cooling system as per procedure mentioned in note of 1.6 and check for leak.
- 1.12. Close the engine access trap.
- 1.13. The vehicle can return in service.❖