



INFINITI

# TECHNICAL SERVICE BULLETIN

Classification: BR10-012B	Reference: ITB10-074B	Date: March 8, 2023
------------------------------	--------------------------	------------------------

## ABS/VDC CAN DIAGNOSIS INFORMATION

This bulletin has been amended. See AMENDMENT HISTORY on the last page.  
Please discard previous versions of this bulletin.

**APPLIED VEHICLES:** All 2005-2023 Infiniti vehicles with ABS and/or VDC except 2022-2023 QX60 (L51)

### SERVICE INFORMATION

When diagnosing a vehicle with an ABS or VDC SLIP warning light ON and with DTCs stored in the ABS/VDC actuator control unit, perform DTC diagnosis first.

- **Do not replace the ABS/VDC actuator control unit** without being supported by the DTC diagnosis.
- **Do not erase DTCs** before performing DTC diagnosis.
- **Always fully diagnose** before performing any repairs.

When DTC U1000 (CAN COMM CIRCUIT) is the only DTC stored in the ABS/VDC actuator control unit, use the **REPAIR FLOW CHART** starting on page 2. This will assist in proper diagnosis results and repairs in addition to using diagnostic information in the Electronic Service Manual (ESM).

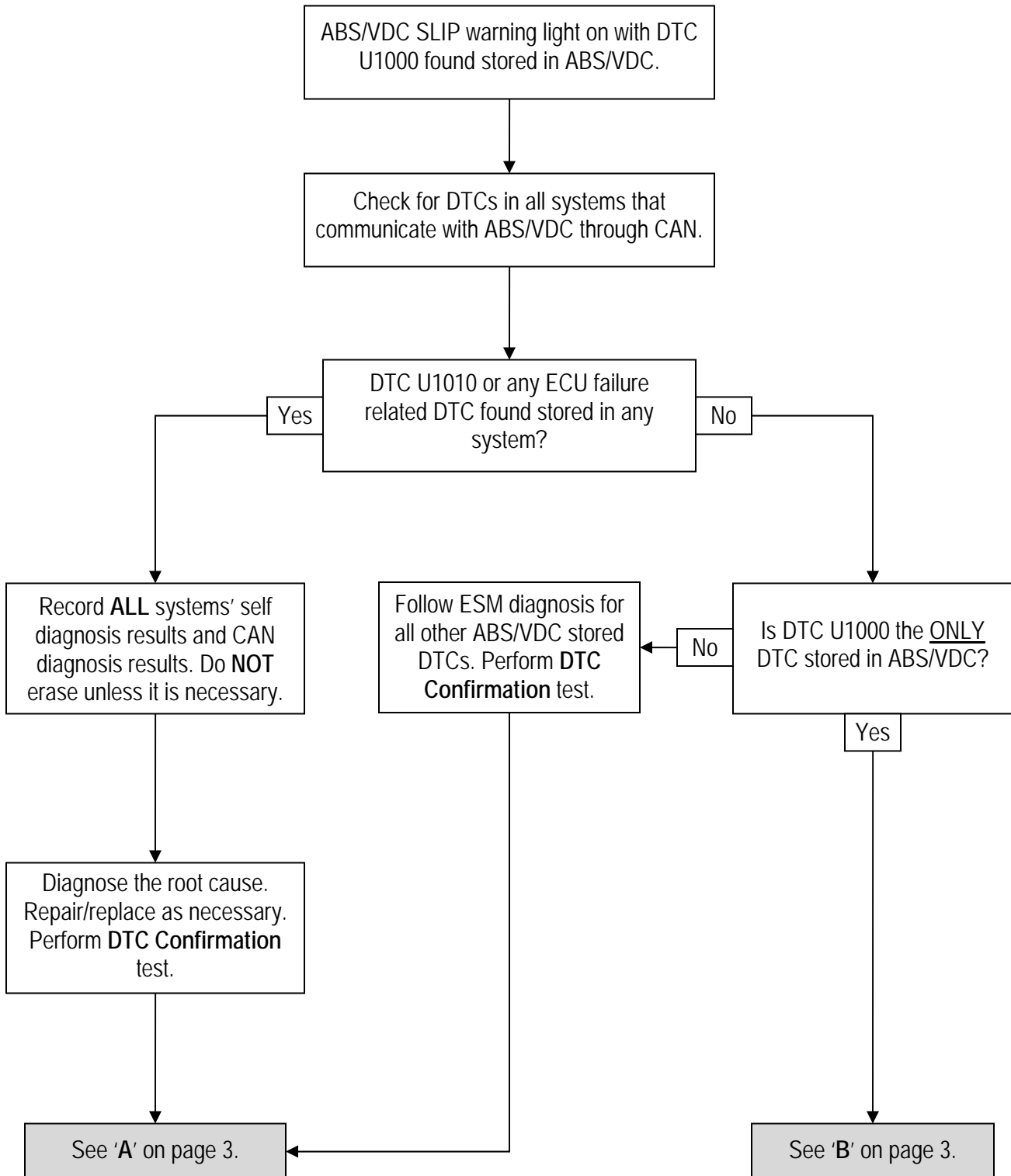
- If DTC U1000 is found stored in other systems, refer to ITB10-029 and the applicable ESM.
- If other DTCs are found stored in ABS/VDC along with U1000, follow the diagnosis steps for those DTCs in the applicable ESM.

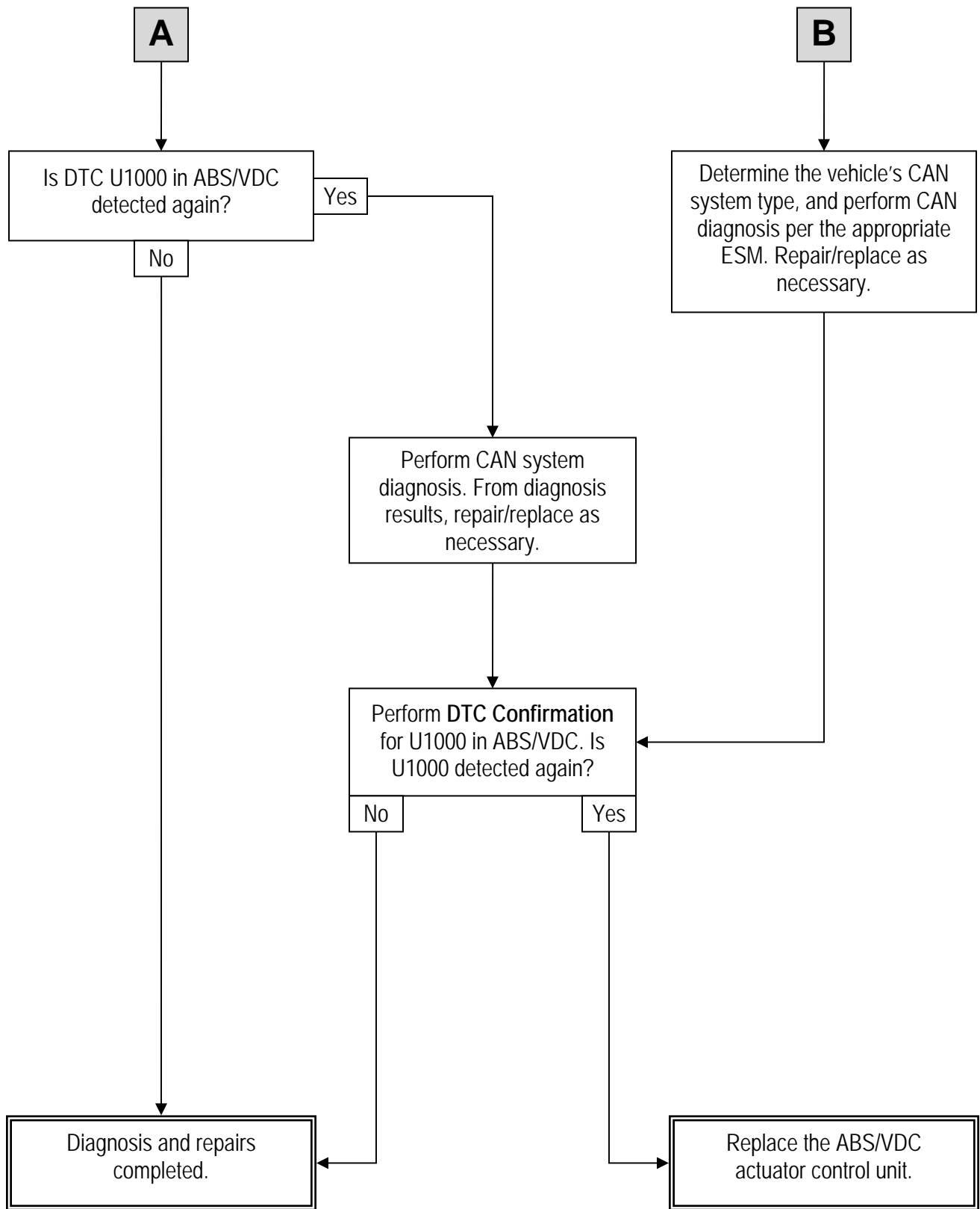
### CLAIMS INFORMATION

Refer to the current Infiniti Warranty Flat Rate Manual and use the appropriate claims coding for repairs performed.

Infiniti Bulletins are intended for use by qualified technicians, not 'do-it-yourselfers'. Qualified technicians are properly trained individuals who have the equipment, tools, safety instruction, and know-how to do a job properly and safely. NOTE: If you believe that a described condition may apply to a particular vehicle, DO NOT assume that it does. See your Infiniti retailer to determine if this applies to your vehicle.

## REPAIR FLOW CHART





## AMENDMENT HISTORY

PUBLISHED DATE	REFERENCE	DESCRIPTION
December 15, 2010	ITB10-074	Original bulletin published
January 27, 2022	ITB10-074A	<b>APPLIED VEHICLES</b> revised and TSB reference on page 1 corrected
March 8, 2023	ITB10-074B	<b>APPLIED VEHICLES</b> revised

