



INFINITI

TECHNICAL SERVICE BULLETIN

Classification: FA12-006D	Reference: ITB13-008D	Date: March 29, 2023
------------------------------	--------------------------	-------------------------

CLICKING NOISE FROM FRONT OR REAR AXLE DURING TAKE-OFF/ACCELERATION

This bulletin has been amended. See AMENDMENT HISTORY on the last page.
Please discard previous versions of this bulletin.

APPLIED VEHICLES:	2009–2013 EX35/EX37 (J50)	2014–2015 Q60 Convertible (HV36)
	2009–2013 FX35/FX37/FX50 (S51)	2014–2019 Q70 (Y51)
	2011–2012 G25 Sedan (V36)	2014–2018 Q70 Hybrid (HY51)
	2009–2013 G37 Convertible (HV36)	2014–2023 QX50 (J50, J55)
	2009–2013 G37 Coupe (CV36)	2022–2023 QX55 (FJ55)
	2009–2013 G37 Sedan (V36)	2011–2013 QX56 (Z62)
	2013 JX35 (L50)	2014–2020 QX60 (L50)
	2011–2013 M37/M56 (Y51)	2022–2023 QX60 (L51)
	2012–2013 M35 Hybrid (HY51)	2014–2017 QX60 Hybrid (L50H)
	2015 Q40 (V36)	2014–2017 QX70 (S51)
	2016–2023 Q50 (V37)	2014–2023 QX80 (Z62)
	2014–2022 Q60 Coupe (CV36, CV37)	

IF YOU CONFIRM

A “clicking” noise coming from either left or right front/rear axles during take-off/acceleration.

ACTION

Apply Molykote M77 grease (P/N 44003-7S000) to the hub bearing surfaces.

HINT:

- Do not remove the axle from the hub or transmission for this bulletin.
- Refer to the ESM for model-specific torque specifications.

IMPORTANT: The purpose of **ACTION** (above) is to give you a quick idea of the work you will be performing. You **MUST** closely follow the entire **SERVICE PROCEDURE** as it contains information that is essential to successfully completing the repair.

Infiniti Bulletins are intended for use by qualified technicians, not 'do-it-yourselfers'. Qualified technicians are properly trained individuals who have the equipment, tools, safety instruction, and know-how to do a job properly and safely. NOTE: If you believe that a described condition may apply to a particular vehicle, DO NOT assume that it does. See your Infiniti retailer to determine if this applies to your vehicle.

SERVICE PROCEDURE

HINT: The photos in this procedure are examples and may not look exactly like the vehicle you are working on.

1. Remove the front or rear (depending on model) wheel bearing Cotter Pin and Lock Nut from the axle.

NOTICE

Some of the **APPLIED VEHICLES** require the axle nut to be removed with a Cape Chisel, to prevent axle thread damage. Refer to ITB21-002 for specific details.

HINT: Do not remove the axle from the hub or transmission for this bulletin.

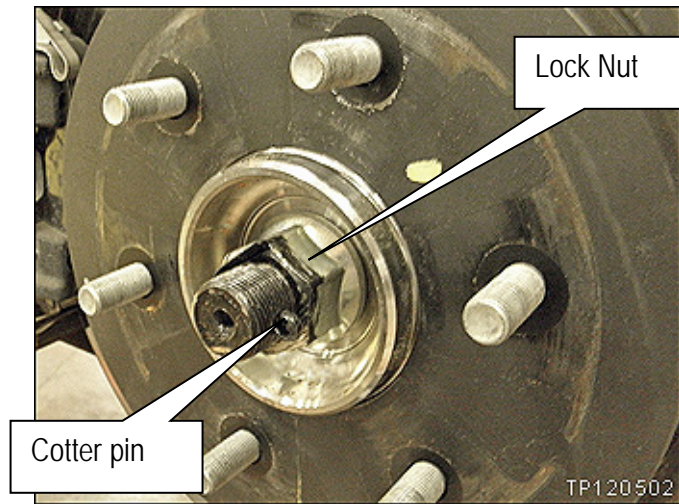


Figure 1

2. Push the axle back to allow application of Molykote® M77 grease (P/N 44003-7S000).
3. Apply a moderate coat of Molykote® to the entire (front or rear) wheel hub bearing surface (Figure 2).
4. Re-install the (front or rear) wheel bearing Lock Nut and Cotter Pin per the ESM instructions.

CAUTION

To avoid the risk of minor personal injury or property damage, replace the Cotter Pin after every use. If not done, a drive axle may become loose.

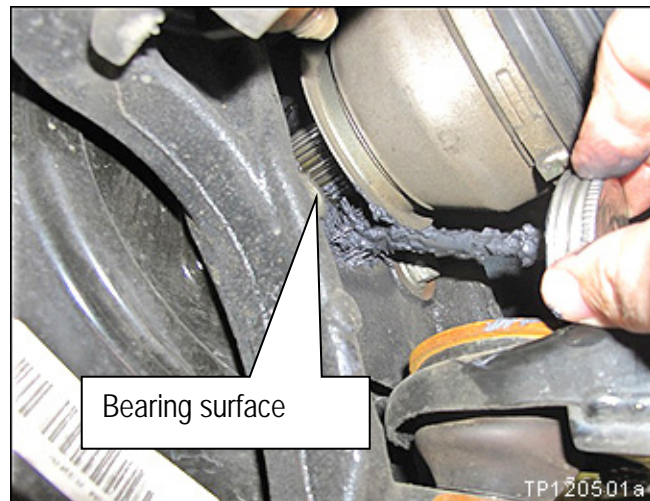


Figure 2

- Refer to model-specific ESM for Lock Nut replacement requirements and torque specifications.

5. Test drive the vehicle to confirm the incident is resolved.

PARTS INFORMATION

DESCRIPTION	PART NUMBER	QUANTITY
Nut-Lock, Wheel Bearing (Wheel hub lock nut) (1)	(2)	1 per side
Cotter Pin (1)	40073-0L700 (3)	1 per side
Washer (1)	40037-1CA0A (4)	1 per side
Molykote M77 Grease	44003-7S000 (5)	See EXPENSE CODE

- (1) Single-use part
- (2) Refer to the electronic parts catalog for model specific part number.
- (3) Not required for wheel hub lock nut that is staked in place.
- (4) EX35, EX37, FX35, FX37, FX50, G25 Sedan, G37 Convertible/Coupe/Sedan, M35 Hybrid, M37, M56, Q40, 2014-2015 Q60 Coupe, Q60 Convertible, Q70, Q70 Hybrid, QX50 (J50 only), QX70.
- (5) One container of Molykote® M77 Grease (P/N 44003-7S000) repairs multiple vehicles. Bill under an **EXPENSE CODE** as shown on this page. Do not include Molykote® M77 Grease part number on this claim.

CLAIMS INFORMATION

Submit a Primary Part (PFP) line claim using the following claims coding:

One Side

DESCRIPTION	PFP	OP CODE	SYM	DIA	FRT
APPLY GREASE TO BEARING SURFACE (ON CAR, ONE SIDE)	(1)	MX22AA	ZL	21	0.5

- (1) Reference the Electronic Parts Catalog and use hub bearing part number as the PFP.

Both Sides

DESCRIPTION	PFP	OP CODE	SYM	DIA	FRT
APPLY GREASE TO BEARING SURFACE (ON CAR, BOTH SIDES)	(1)	MX23AA	ZL	21	0.7

- (1) Reference the Electronic Parts Catalog and use hub bearing part number as the PFP.

EXPENSE CODE

EXPENSE CODE	DESCRIPTION	MAX AMOUNT
048	Molykote® M77 Grease	\$4.15

AMENDMENT HISTORY

PUBLISHED DATE	REFERENCE	DESCRIPTION
March 22, 2013	ITB13-008	Original bulletin published
January 17, 2020	ITB13-008a	APPLIED VEHICLES and PARTS INFORMATION revised
June 9, 2021	ITB13-008B	APPLIED VEHICLES updated and NOTICE added to step 1
September 27, 2022	ITB13-008C	APPLIED VEHICLES and footnote #4 in PARTS INFORMATION revised
March 29, 2023	ITB13-008D	PARTS INFORMATION revised, EXPENSE CODE added, and "NOTE" references changed to "HINT"

