

Excessive Resistance of Door Side Windows When Being Raised and/or Lowered, Cracking and Squeaking Noises

Topic number	LI72.00-P-076031
Version	1
Function group	72.00 - General
Date	3/8/23
Validity	MODEL
	V177
	H/X247
	X243
	up to production September 30, 2022

Reason for change

Complaint

Excessive resistance of door side windows when being raised/lowered, cracking and squeaking noises.

Cause

Sealing lip of inner sealing rail (see picture 1 and picture 2, pos. 40 and 130) folds down while side windows are being lowered (opened).

When the side windows are raised (closed), the sealing lip is pulled back up again.

Attachments	
File	Description
Bild 1.JPG	Sealing Lip of Inner Seal Rail

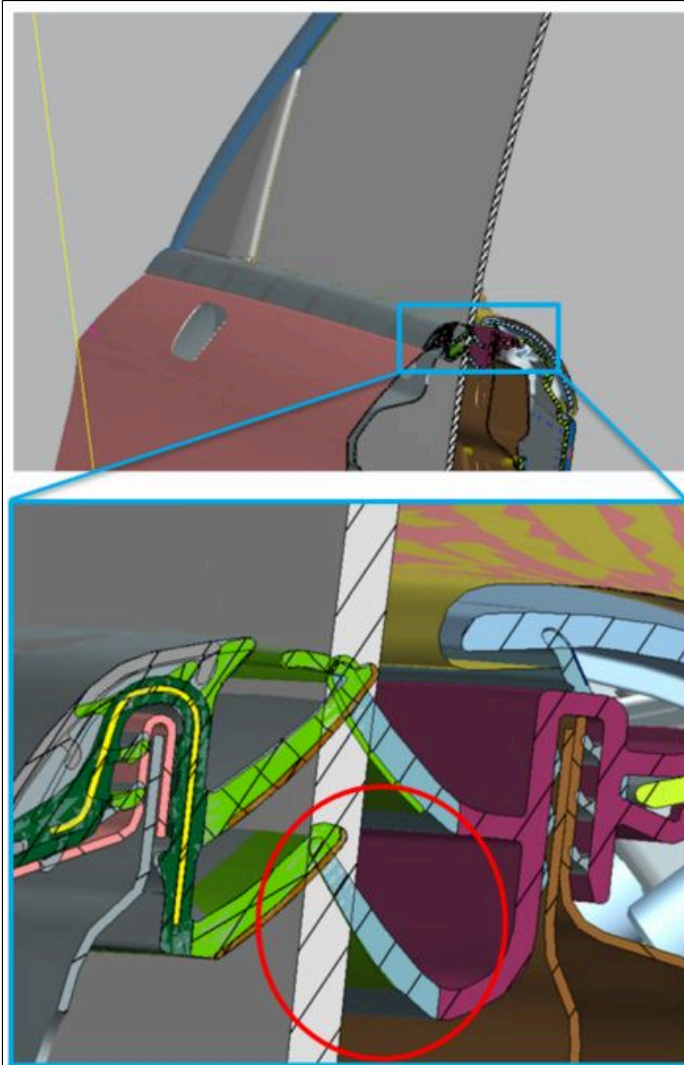
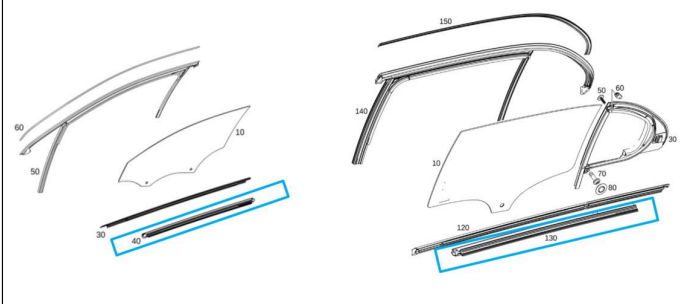


Bild 2.JPG

XPPI Callout of Inner Seal Rail



Remedy

Replace inner sealing rail.

Then perform normalization of the window lifter system in the relevant door control unit.

Note:

No other surrounding component parts – such as the outer sealing rails (picture 1 and picture 2, pos. 30 and 120), window lifter components or door control units – may be replaced or flashed for this complaint.

XENTRY TIPS

Please note the following:

If the problem on a vehicle occurs outside the valid production date, please create a TIPS case with the following contents.

1. Make a video of the problem of the inside of the door in the area of the inner sealing rail, and pull the upper lip of the inner sealing rail to one side while doing so and check to see if the lower lip is folded over, for example, see picture 1.
2. Details on environmental conditions in a problem case (temperature, dry or wet)
3. Pictures of inner sealing rail when removed:
 - Both mounting face lips towards the glass
 - Any visible damage on the inner sealing rail

Symptoms
Body > Glazing > Window lifting mechanism/window operation > Remains stationary
Body > Glazing > Window lifting mechanism/window operation > Does not run up
Body > Glazing > Window lifting mechanism/window operation > Does not run down
Body > Glazing > Window lifting mechanism/window operation > Stiff/sluggish
Body > Glazing > Window lifting mechanism/window operation > Noise
Body > Glazing > Side window > Noise

Parts						
Part number	ES1	ES2	Designation	Quantity	Note	EPC
A1777250101			SEALING RAIL FOR INNER LEFT GLASS PANE	1	Valid for MODEL 177.0/177.1/177.9	X
A1777250201			SEALING RAIL FOR INNER RIGHT GLASS PANE	1	Valid for MODEL 177.0/177.1/177.9	X
A1777353301			SEALING RAIL FOR INNER LEFT GLASS PANE	1	Valid for MODEL 177.0/177.1	X
A1777353401			SEALING RAIL FOR INNER RIGHT GLASS PANE	1	Valid for MODEL 177.0/177.1	X
A2477256301			SEALING RAIL FOR INNER LEFT GLASS PANE	1	Valid for MODEL 247.6/243.6	X
A2477256401			SEALING RAIL FOR INNER RIGHT GLASS PANE	1	Valid for MODEL 247.6/243.6	X
A2477256501			SEALING RAIL FOR INNER LEFT GLASS PANE	1	Valid for MODEL 247.0/247.7/243.7	X
A2477256601			SEALING RAIL FOR INNER RIGHT GLASS PANE	1	Valid for MODEL 247.0/247.7/243.7	X
A2477358301			SEALING RAIL FOR INNER LEFT GLASS PANE	1	Valid for MODEL 247.6/243.6	X
A2477358401			SEALING RAIL FOR INNER RIGHT GLASS PANE	1	Valid for MODEL 247.6/243.6	X
A2477358501			SEALING RAIL FOR INNER LEFT GLASS PANE	1	Valid for MODEL 247.0	X
A2477358601			SEALING RAIL FOR INNER RIGHT GLASS PANE	1	Valid for MODEL 247.0	X

XENTRY TIPS

A2477358701		SEALING RAIL FOR INNER LEFT GLASS PANE	1	Valid for MODEL 247.7/243.7	X
A2477358801		SEALING RAIL FOR INNER RIGHT GLASS PANE	1	Valid for MODEL 247.7/243.7	X

Operation numbers/damage codes

Op. no.	Operation text	Time	Damage code	Note
			72A3236	
			72N3236	
			73A3236	
			73N3236	