



# Technical Service Bulletin

SUBJECT: <b>TORQUE CHANGE OF BOLTS FOR THE A/C CONTROL UNIT AND HAZARD WARNING LAMP SWITCH – SERVICE MANUAL REVISION</b>			NO.: <b>TSB-23-55-004</b>
			DATE: <b>March 2023</b>
			MODEL: <b>See below</b>
<b>CIRCULATE TO:</b>	<input type="checkbox"/> GENERAL MANAGER	<input checked="" type="checkbox"/> PARTS MANAGER	<input checked="" type="checkbox"/> TECHNICIAN
<input checked="" type="checkbox"/> SERVICE ADVISOR	<input checked="" type="checkbox"/> SERVICE MANAGER	<input checked="" type="checkbox"/> WARRANTY PROCESSOR	<input type="checkbox"/> SALES MANAGER

## PURPOSE

This TSB provides torque change information for the Interior, Chassis Electrical, and Heater, Air Conditioning and Ventilation sections of the Service Manual.

## AFFECTED VEHICLES

- 2018-2020 Eclipse Cross
- 2022-2023 Eclipse Cross

## AFFECTED SERVICE MANUAL

- 2018-2020 Eclipse Cross Service Manual
- 2022-2023 Eclipse Cross Service Manual

## PROCEDURE

Please use the attached chart as a guide to replace the indicated pages of the affected Service Manual: Group 52 Interior, Group 54 Chassis Electrical, and Group 55 Heater, Air Conditioner and Ventilation, A/C Control Unit.

Applicable manual	Pub. No.	Applicable Title	Contents
2018 ECLIPSE CROSS Service Manual	MSCD-020B-2018	INTERIOR └ INSTRUMENT CENTER PANEL └ INSTRUMENT CENTER PANEL REMOVAL AND INSTALLATION CHASSIS	Attached Sheet 12
2019 ECLIPSE CROSS Service Manual	MSCD-020B-2019		
2020 ECLIPSE CROSS Service Manual	MSCD-020B-2020	ELECTRICAL └ HAZARD WARNING LIGHT SWITCH └ HAZARD WARNING LIGHT SWITCH REMOVAL AND INSTALLATION	Attached Sheet 13
2022 ECLIPSE CROSS Service Manual	MSCD-020B-2022		
2023 ECLIPSE CROSS Service Manual	MSCD-020B-2023	HEATER, AIR CONDITIONING AND VENTILATION └ A/C CONTROL UNIT └ A/C CONTROL UNIT REMOVAL AND INSTALLATION	Attached Sheet 14



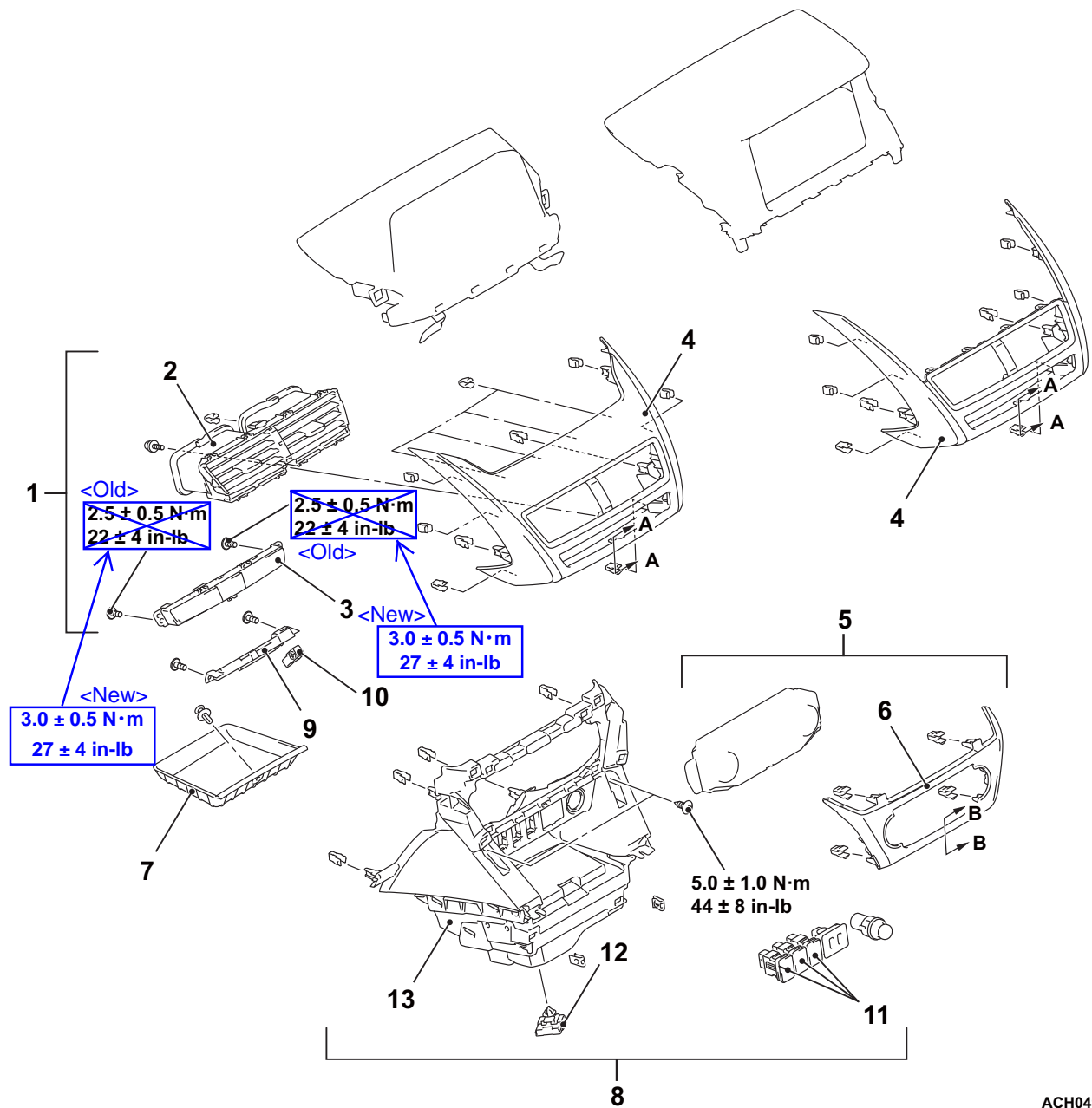
Copyright 2023, Mitsubishi Motors North America, Inc.

The information contained in this bulletin is subject to change. For the latest version of this document, go to the Mitsubishi Dealer Link, MEDIC, or the Mitsubishi Service Information website ([www.mitsubishitechinfo.com](http://www.mitsubishitechinfo.com)).

INTERIOR  
INSTRUMENT CENTER PANEL

# INSTRUMENT CENTER PANEL

## REMOVAL AND INSTALLATION



ACH04911AB

## CHASSIS ELECTRICAL HAZARD WARNING LIGHT SWITCH

### HAZARD WARNING LIGHT SWITCH

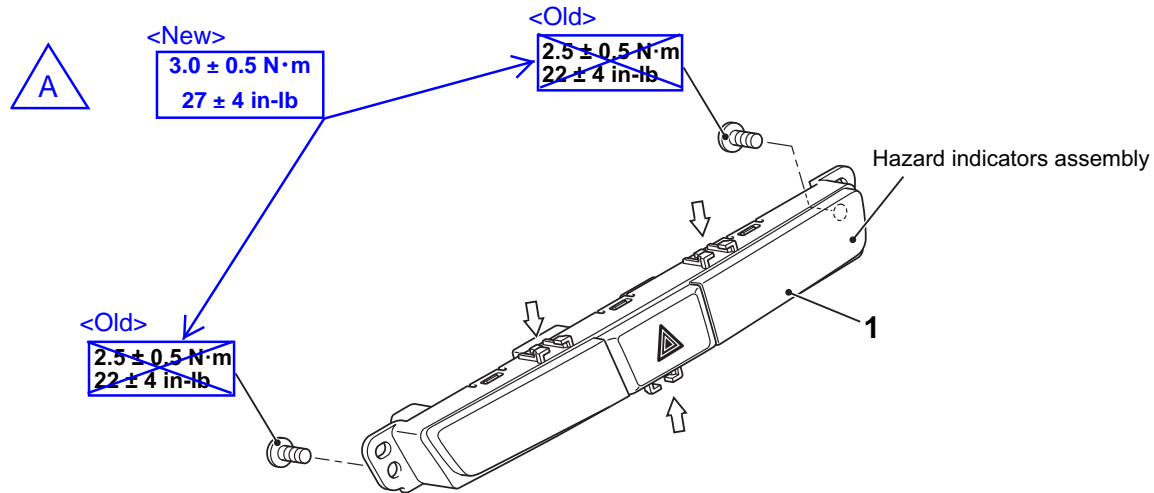
#### REMOVAL AND INSTALLATION

##### Pre-removal Operation

- Instrument panel air outlet panel assembly (Refer to GROUP 52A - Instrument Center Panel ).

##### Post-installation Operation

- Instrument panel air outlet panel assembly (Refer to GROUP 52A - Instrument Center Panel ).



##### NOTE

↔: Claw positions

ACH01054AB

##### Removal steps

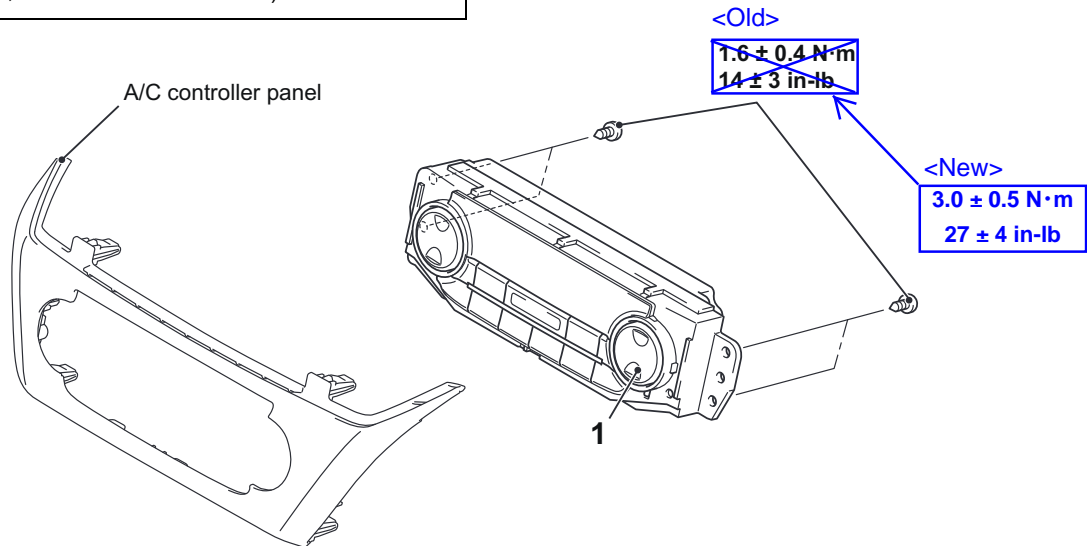
- Instrument panel air outlet center
- Hazard warning light switch

# A/C CONTROL UNIT

## REMOVAL AND INSTALLATION

### Pre-removal and Post-installation Operation

- Instrument panel console box center assembly (Refer to GROUP 52A, Instrument Center Panel )



ACH00991AB

<Added>

>>A<<

### Removal

1. A/C controller assembly

<Added>

### INSTALLATION SERVICE POINT

#### >>A<< A/C CONTROLLER ASSEMBLY INSTALLATION

Tighten the mounting screw to the specified torque in the order shown.

**Tightening torque: 3.0 ± 0.5 N·m (27 ± 4 in-lb)**

