



TECHNICAL SERVICE BULLETIN

Classification:

BT21-001A

Reference:

NTB21-018A

Date:

March 20, 2023

REAR PERSONAL LAMP NOT WORKING OR SWITCH COMING APART

This bulletin has been amended. See **AMENDMENT HISTORY** on the last page.
Please discard previous versions of this bulletin.

APPLIED VEHICLES: 2020 - 2023 Titan/Titan XD (A61)
Built on or after: December 13, 2019

IF YOU CONFIRM

The rear personal (headliner) lamp operation is intermittent,

OR

The rear personal lamp switch and trim bezel assembly is coming apart and/or missing.

ACTION

Replace the rear personal lamp switch and trim bezel assembly.

IMPORTANT: The purpose of **ACTION** (above) is to give you a quick idea of the work you will be performing. You **MUST** closely follow the entire **SERVICE PROCEDURE** as it contains information that is essential to successfully completing this repair.

Nissan Bulletins are intended for use by qualified technicians, not 'do-it-yourselfers'. Qualified technicians are properly trained individuals who have the equipment, tools, safety instruction, and know-how to do a job properly and safely. **NOTE:** If you believe that a described condition may apply to a particular vehicle, **DO NOT** assume that it does. See your Nissan dealer to determine if this applies to your vehicle.

SERVICE PROCEDURE

Remove and Replace the Rear Personal Switch and Trim Bezel

HINT: The lamp assembly is shown removed from the vehicle in Figures 1–8. However, removal of the rear personal lamp assembly from the vehicle is not required. The procedure can be performed while the lamp assembly is installed in the vehicle.

1. Insert a trim/finesse stick between the lamp lens and the knob switch trim bezel, in the middle of the trim bezel.



Figure 1

2. Gently pry inward and upward on the trim bezel to disengage the snap lock on the side of the trim bezel.

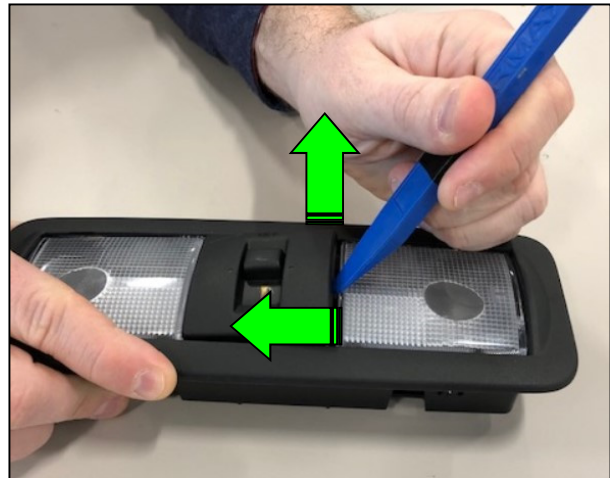


Figure 2

3. Remove the old trim bezel and knob switch and discard both (they will not be reused).



Figure 3

4. Install the new knob switch assembly into the lamp unit.

HINT: Be sure to place the knob switch assembly between the two guide ribs in the lamp housing assembly.



Figure 4

5. Install the new trim bezel.

IMPORTANT: Align the rib side of the new trim bezel with the non-rib side of the lamp housing assembly (Figure 5 and Figure 6).

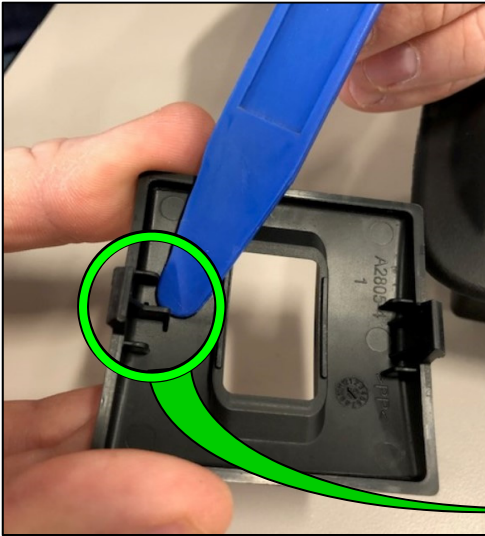


Figure 5

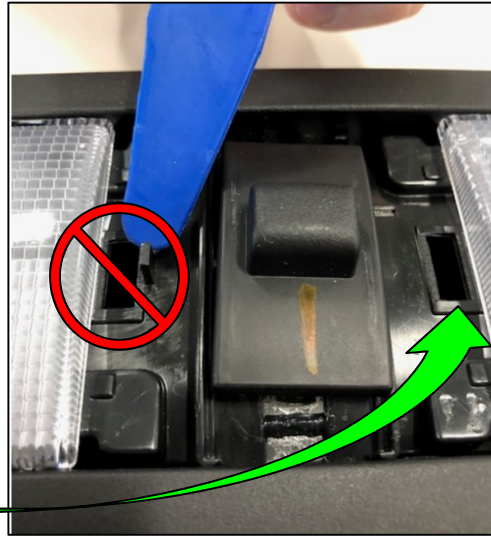


Figure 6

6. Carefully press down on one side of the trim bezel to engage the snap lock.



Figure 7

- Carefully press down on the opposite side of the trim bezel to engage the final snap lock.



Figure 8

- If the rear personal lamp was removed from the vehicle for service, reinstall the lamp in the reverse order of removal.

Test Lamp Operation

HINT: Conduct steps 9–13 by operating the lamp switch knob slowly.

- Move the lamp switch knob to the OFF position.
 - Verify the lamp is not illuminated.
- Move the lamp switch knob to the center (DOOR) position.
 - Verify the lamp is illuminated only when a door is open.
- Move the lamp switch knob to the ON position.
 - Verify the lamp is illuminated.
- Move the lamp switch knob to the center (DOOR) position.
 - Verify the lamp is illuminated only when a door is open.
- Move the lamp switch knob to the OFF position.
 - Verify the lamp is not illuminated.
- Perform steps 9–13 again by operating the lamp switch knob quickly.
- Activate the push lenses on the right-hand side and the left-hand side of the lamp assembly to ensure there is no sticking of the lenses and each side illuminates.

PARTS INFORMATION

DESCRIPTION	TRIM COLOR	PART NUMBER	QUANTITY
COVER ASSY-PERSONAL LAMP (Personal Lamp Trim Bezel)	Gray	26462-9FV3A	1
	Black	26462-9FV3B	1
KNOB-PERSONAL LAMP (Personal Lamp Knob Switch)	Gray	26463-9FV3A	1
	Black	26463-9FV3B	1

CLAIMS INFORMATION

Submit a Primary Part (PP) type line claim using the following claims coding:

DESCRIPTION	PFP	OP CODE	SYM	DIA	FRT
Rear Personal Lamp Switch and Trim Bezel Replacement	(1)	RX9TAA	ZE	32	0.2

- (1) Reference the electronic parts catalog and use the Lamp Assembly – Personal (26460-*****) as the Primary Failed Part (PFP).

AMENDMENT HISTORY

PUBLISHED DATE	REFERENCE	DESCRIPTION
March 8, 2021	NTB21-018	Original bulletin published
March 20, 2023	NTB21-018A	Updated model years of APPLIED VEHICLES