

Subject: General Software Improvement Bulletin Bulletin Type: Field Fix Conditional

Bulletin No: TS45-FC-2304

PQR No:500000007246

Rev No: 00

Ref. No: 700004230

Vehicle Model: TS45

Flat Rate Time / Code:60 min

Date of issue: 31.03.2023

Modify Before: 31.03.2024

What to do with off coming parts:

- Scrap
- Return
- Use with additional parts
- On consignment
- No off coming parts

What to do with outstanding parts of previous revision:

- Scrap
- Return
- Use with additional parts
- On consignment
- No outstanding parts

Description of the modification:

The purpose of the bulletin is to ensure the improvement of Handicapped Lift algorithm and Multiviu brightness setting.

Bulletin Responsible: Abdulsamed ÇİFTÇİOĞLU

Published & Approved By: Alper TEKNİKER

SAFETY INSTRUCTIONS

1. Mechanical Requested Dress Code

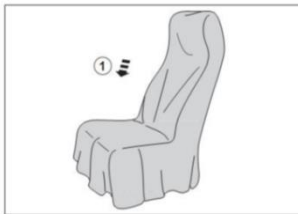


WARNING:

- Dress properly to avoid personal injury and damage to the vehicle

- ✓ Always wear protective clothing
- ✓ Do not wear any worn or loose-fitting clothing
- ✓ Remove jewelry before starting to work
- ✓ In case of long hair, use hairnet
- ✓ The illustration on the left shows some of the correct and incorrect clothing
- ✓ Sharp edged items should be avoided in order not to scratch vehicle (i.e. belts, watches, necklace)

2. Protect Seats when Mechanic Starts Working



- ✓ Seats, trimming, upholstery stuff and carpeting should be protected with appropriate coverings.

3. Welding on the Chassis

- a. Always disconnect the batteries (starting with the negative lead).
- b. Disconnect the connectors of electrical and electronic equipment (electronic control units, sensors and actuators) if they are less than 2 meters away from the chassis part to be welded or the earth terminal of the welding equipment.
- c. The earth terminal should never be attached to vehicle components such as engine, axles and springs. Arcing on these parts is not permitted, because of the risk of damage to bearings, springs, etc.
- d. The earth terminal must make good contact and be placed as close as possible to the part to be welded.
- e. Plastic pipes, rubber parts and parabolic springs should be well protected against welding spatter and temperatures higher than 70°.
- f. The contact switch must not be in the accessory or contact position. The contact key should be removed.
- g. Reconnect in reversed order of disconnecting. Ensure that a good earth connection is made between chassis, engine and cab.

The program Link

Kibes :

** TS00-LC3-019 software should be installed on vehicles with software starting with TS00-LC3-...

<https://content.temsa.com/sapcs?get&pVersion=0045&contRep=ZADNSPEKTEP07101&docId=90E2BA0455251EDDB3931F6943D45F56&accessMode=r&compld=TS00-LC3-019.7z>

Multiviu :

**TS00-MV-026 software should be installed on vehicles with software starting with TS00-MV-...

https://content.temsa.com/sapcs?get&pVersion=0045&contRep=ZADNSPEKTEP07101&docId=90E2BA0455251EDDB392C07A4C42DF56&accessMode=r&compld=TS00_MV_026.L2P.7z

Uploading the up to date program(Kibes):

- 1- Park the vehicle to an area which is proper to work.



- 2- To install the KIBES software, locate the KIBES socket next to the OBD socket by looking at the label on the cover.



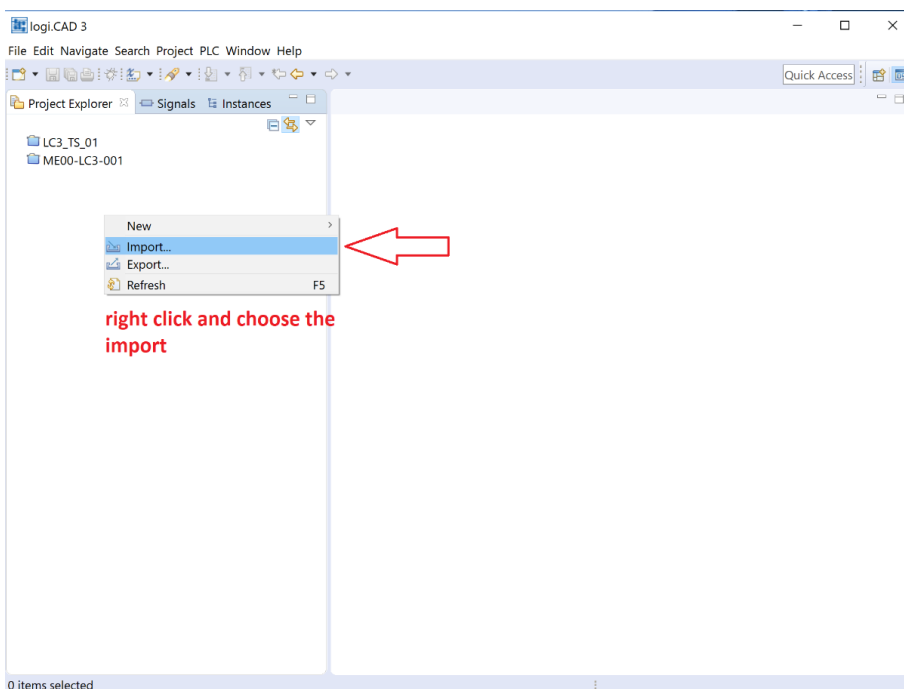
- 3- Connect one end of the KIBES cable to the CANalyzer or Peak cable and the other end to the KIBES diagnostic socket. Connect the CANalyzer or Peak output to the computer. Make sure that the KIBES dongle is inserted to your computer.

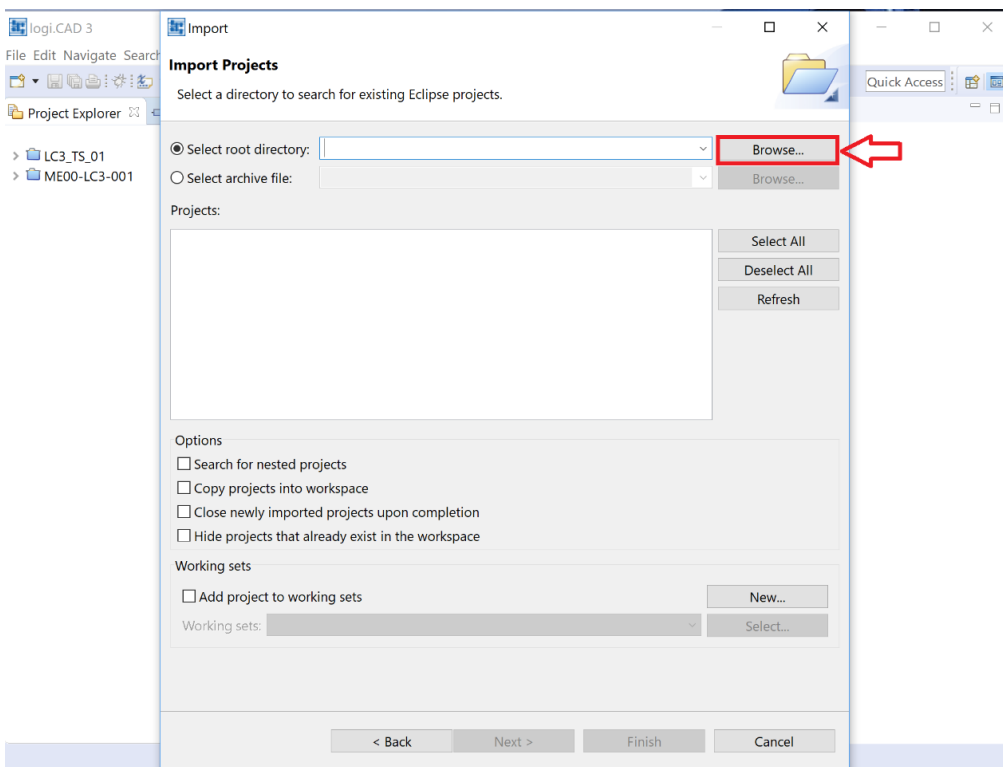
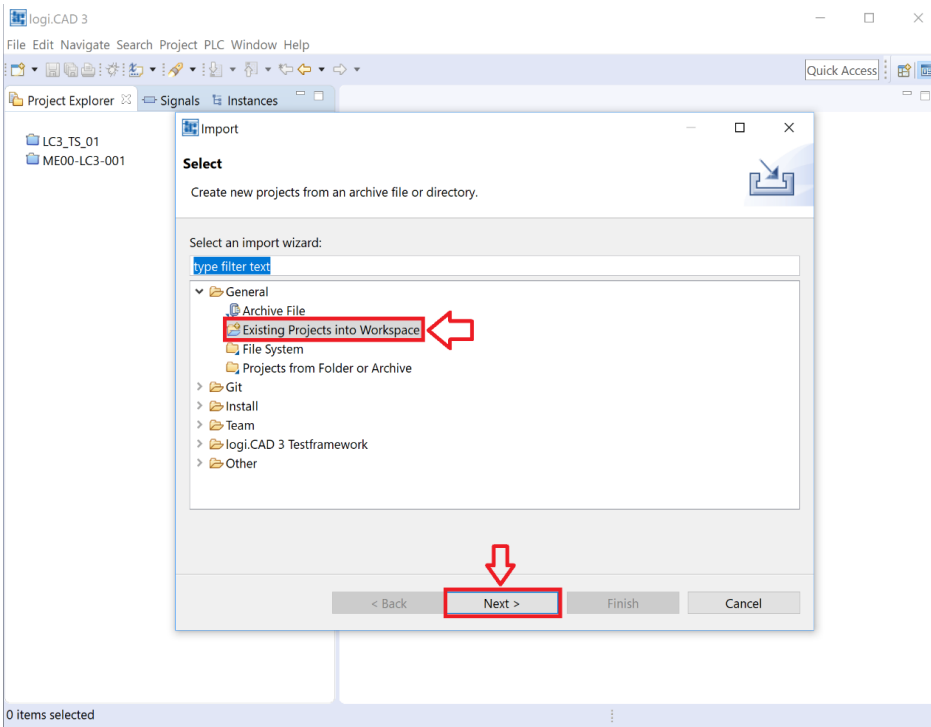




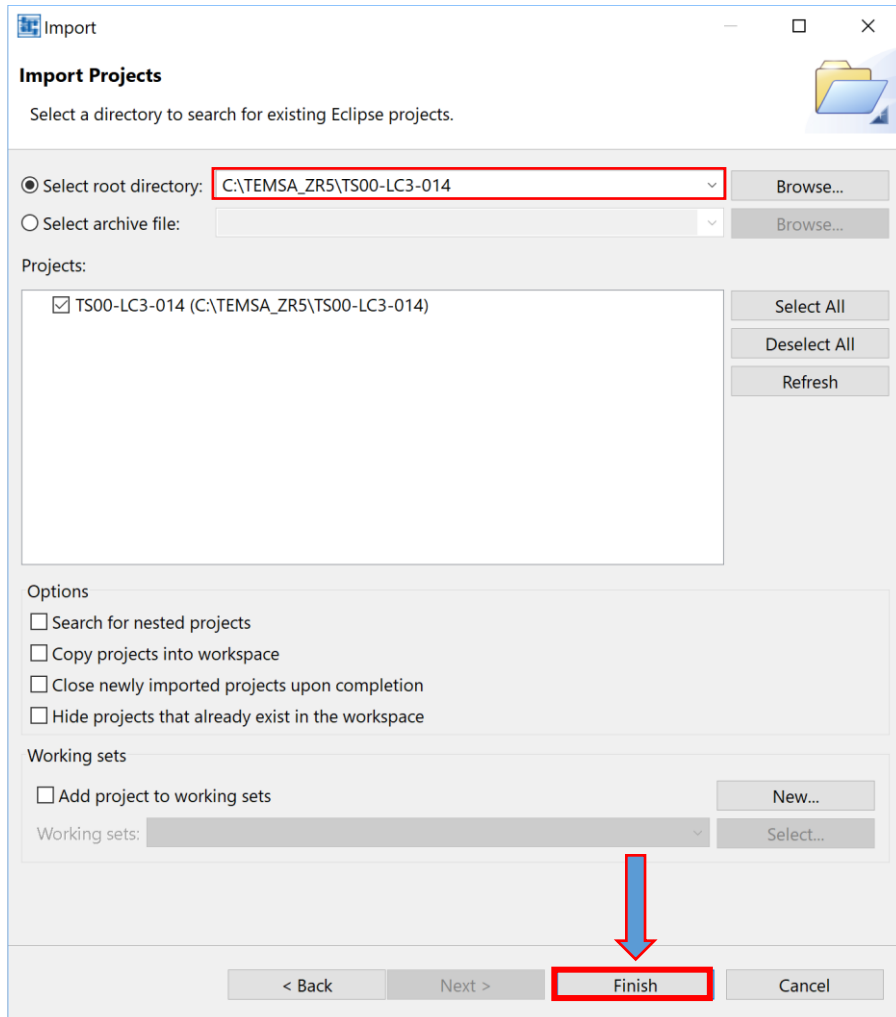
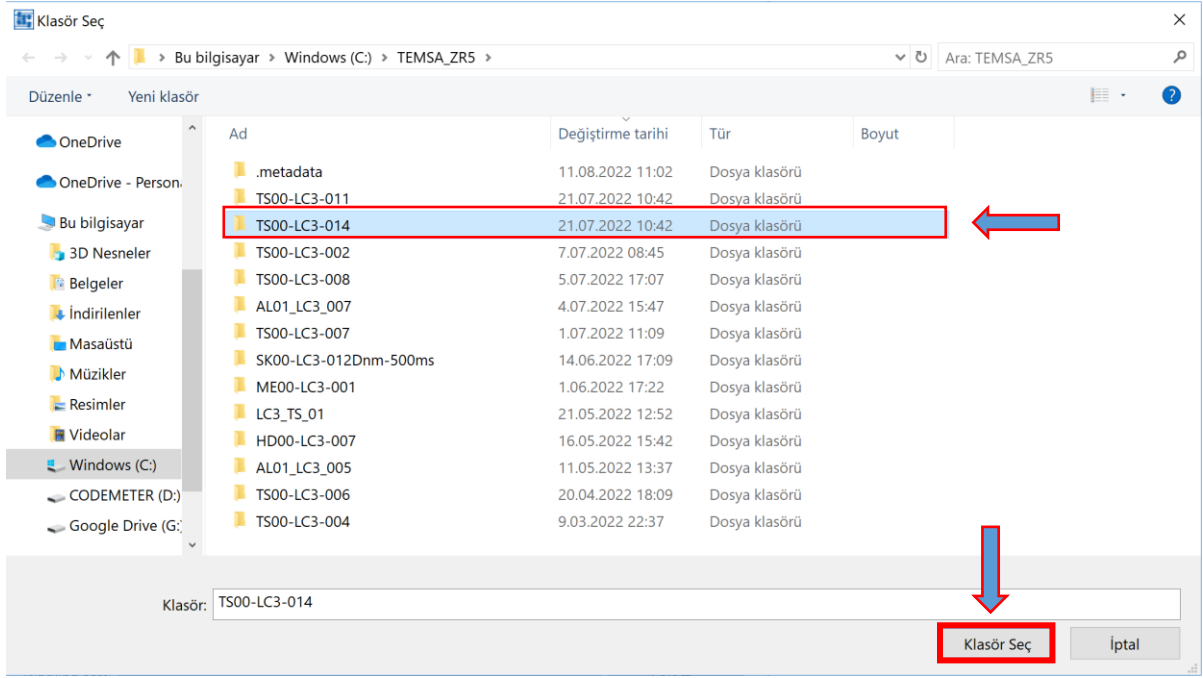


- 4- Install the KIBES software on the vehicle as described in the images. Turn the ignition switch on. Do not start the engine.

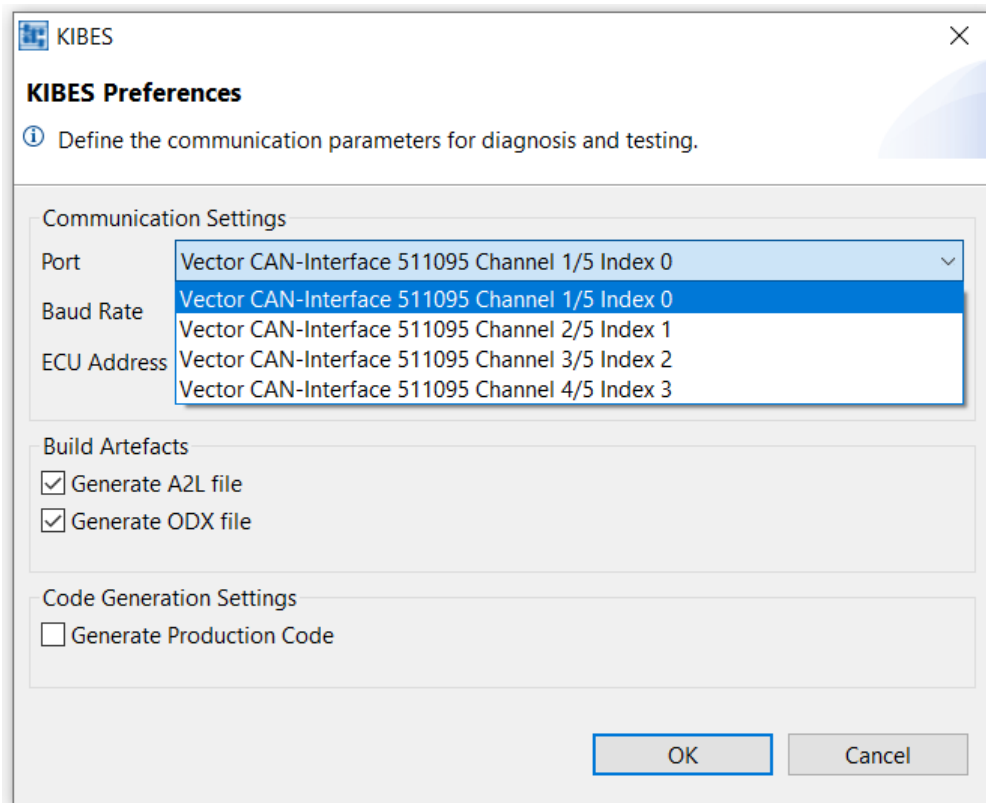
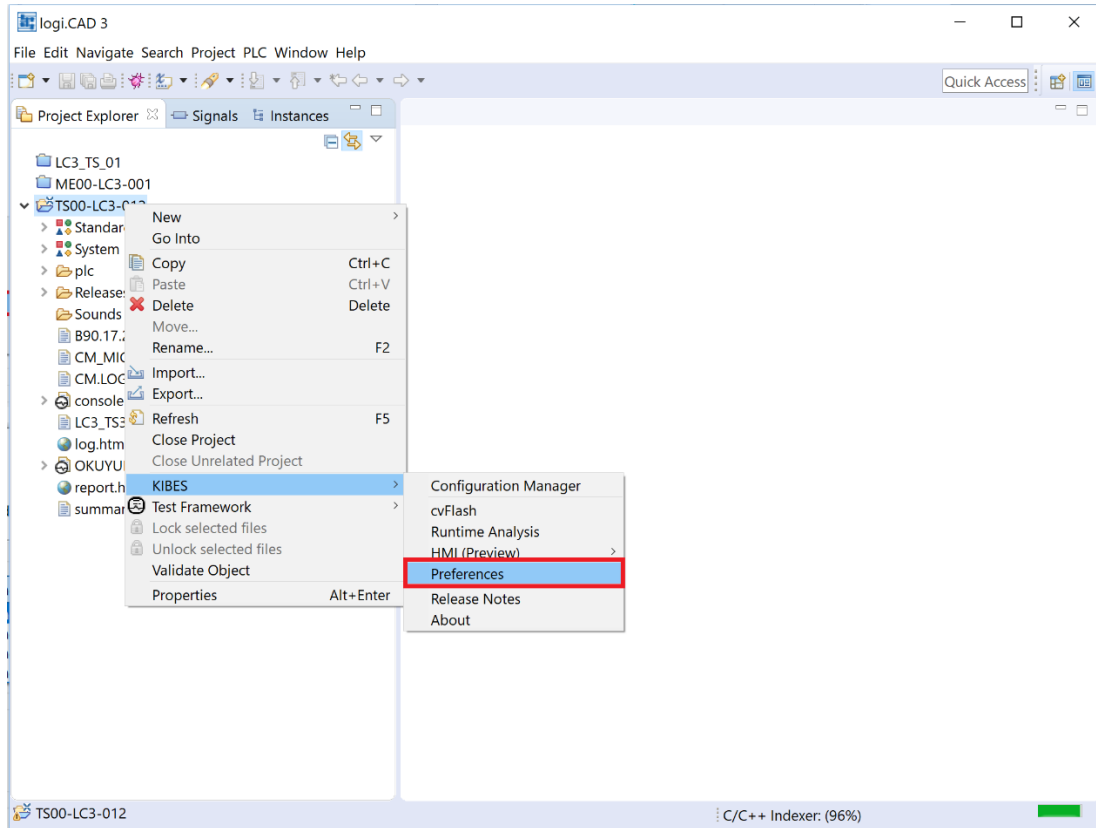




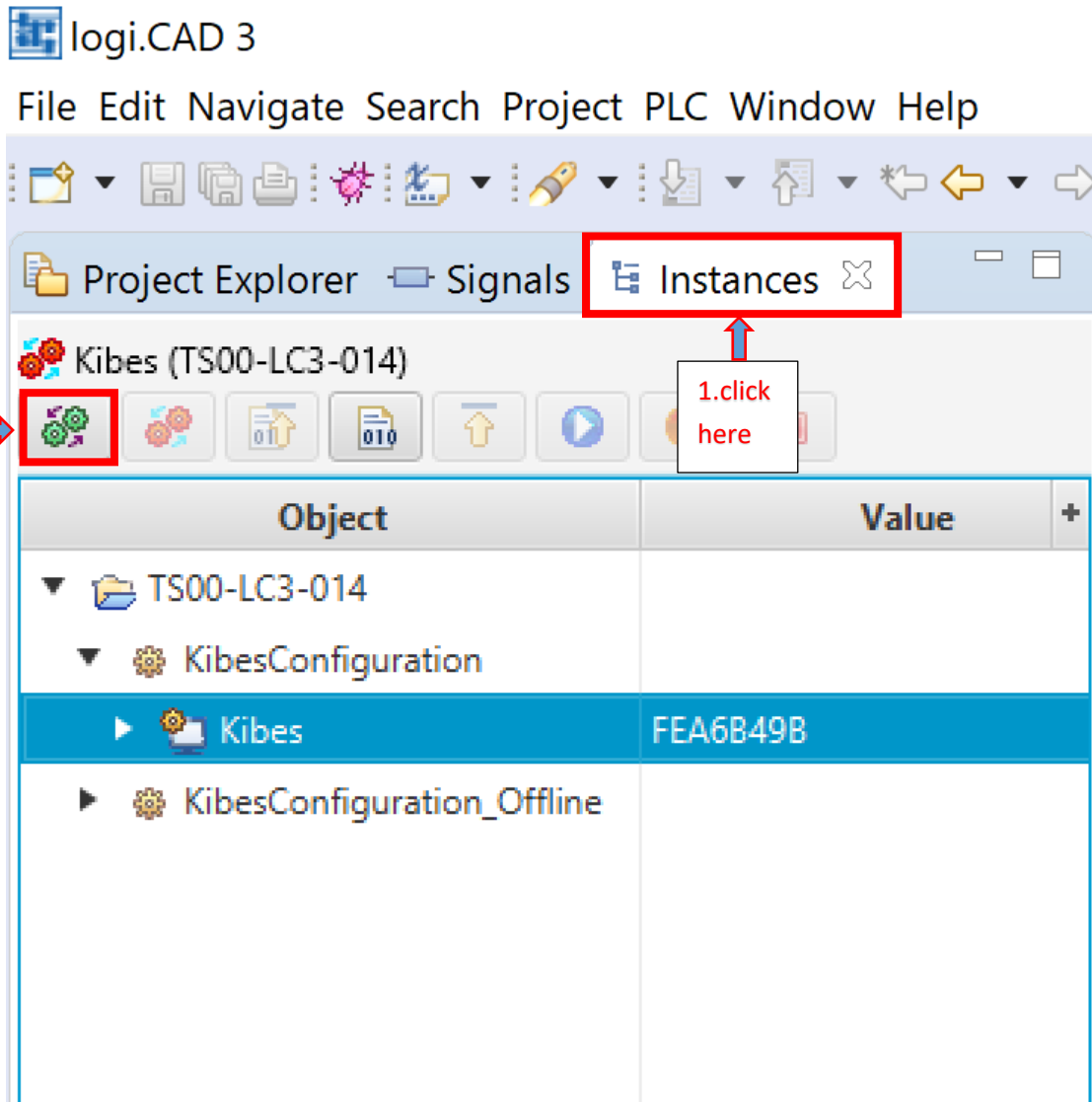
Hint: The software version must be selected correctly. The number shown in the picture may be representative.



Click "Preferences" to check the **Baudrate** and **port**. (for TS Coachs 250000)

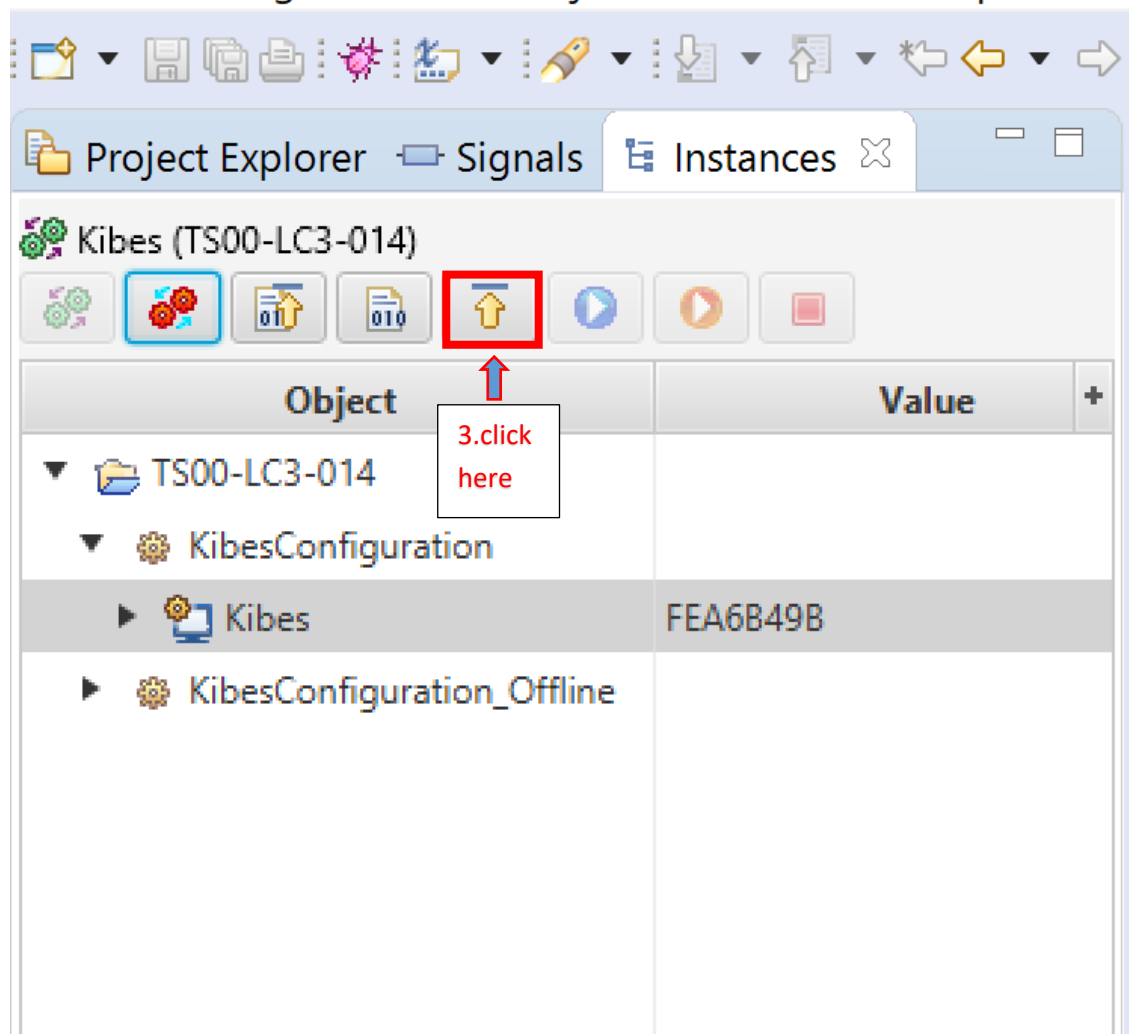


Click on the instruction shown in order in the picture.



logi.CAD 3

File Edit Navigate Search Project PLC Window Help



The screenshot shows the logi.CAD 3 software interface. The top menu bar includes File, Edit, Navigate, Search, Project, PLC, Window, and Help. Below the menu bar is a toolbar with various icons. The Project Explorer panel on the left shows a tree view for 'Kibes (TS00-LC3-014)'. The Instances panel on the right shows a table with columns 'Object' and 'Value'. A red box highlights an upward arrow icon in the toolbar, and a callout box points to it with the text '3.click here'.

Object	Value
TS00-LC3-014	
KibesConfiguration	
Kibes	FEA6B49B
KibesConfiguration_Offline	

Uploading the up to date program (Multiviu):

1-Park the vehicle to an area which is proper to work.

2-Connect your computer to the vehicle by using the CANalyzer interface. Plug the USB part into your computer and connect your CAN cable to the 9 pinned OBD port with the **D** pin low and the **C** pin high.



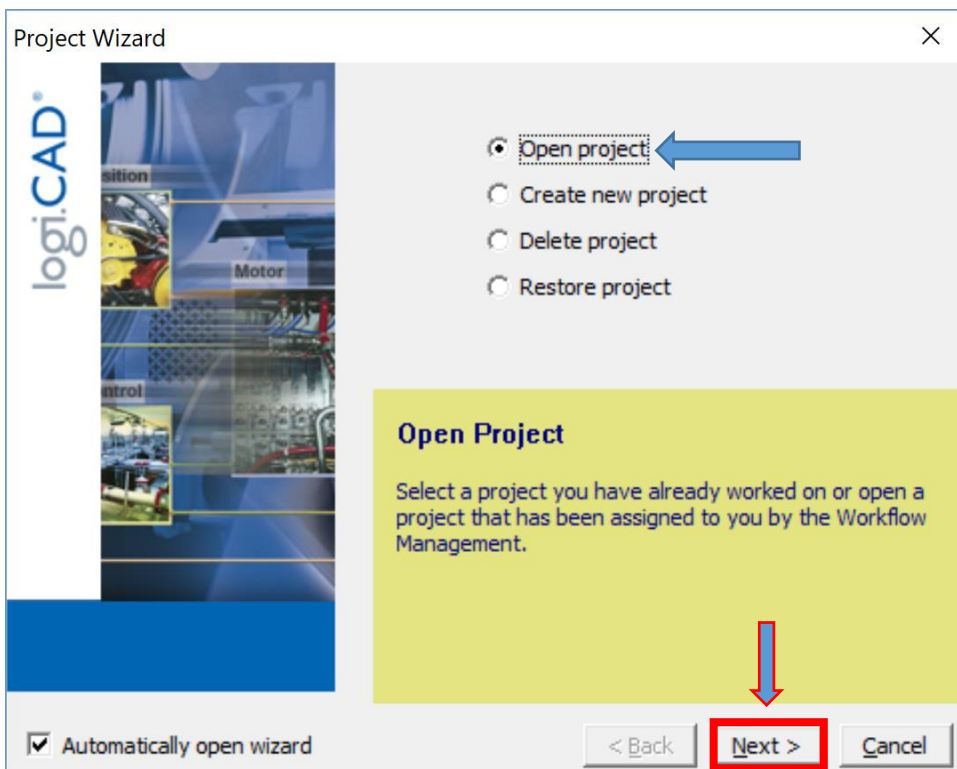


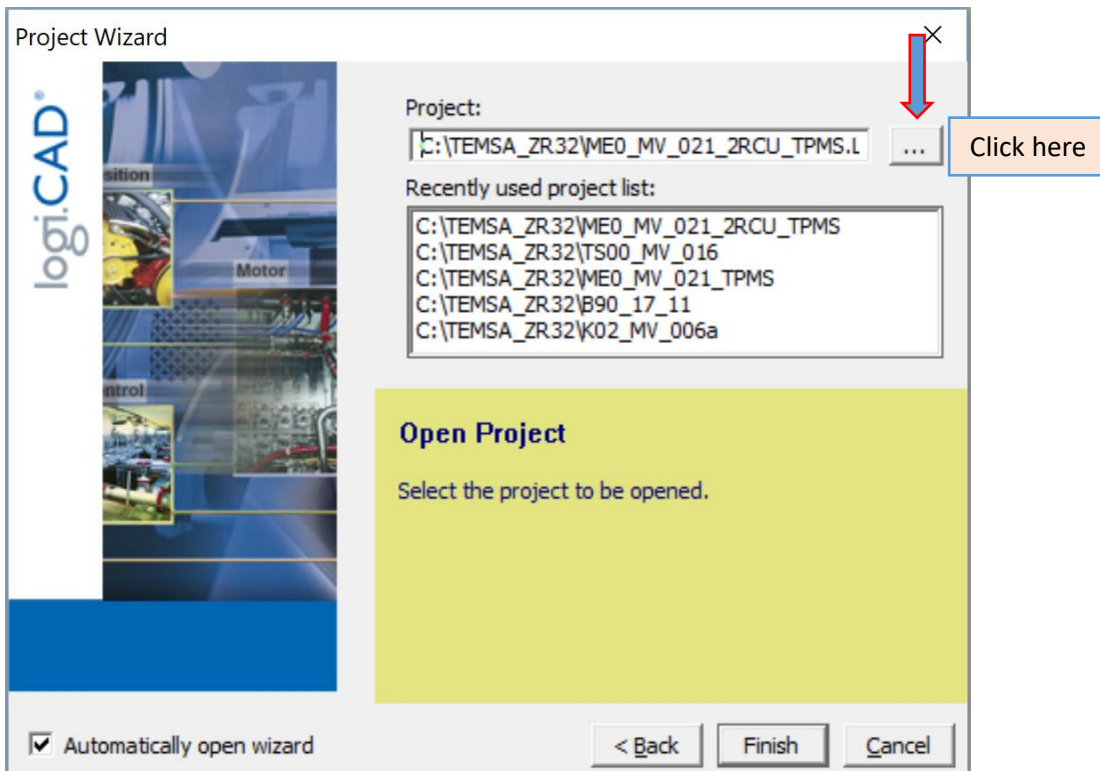
3- Turn the ignition switch on. Do not start the engine.

4- Make sure that the KIBES dongle is inserted to your computer.



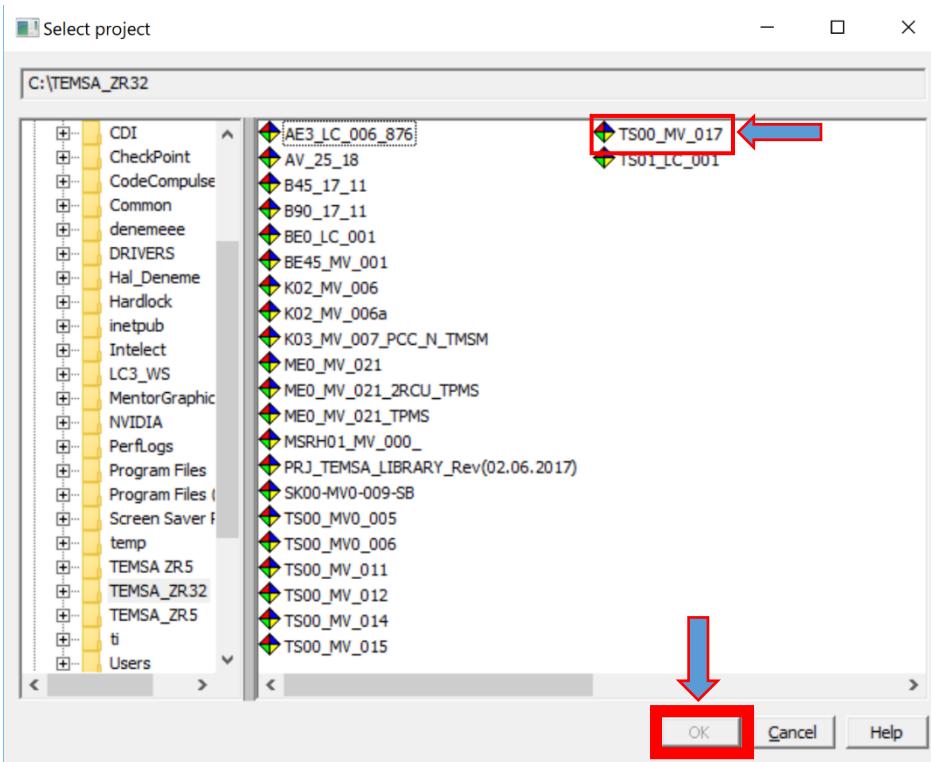
5- Select the “Open Project” selection and click “next”.



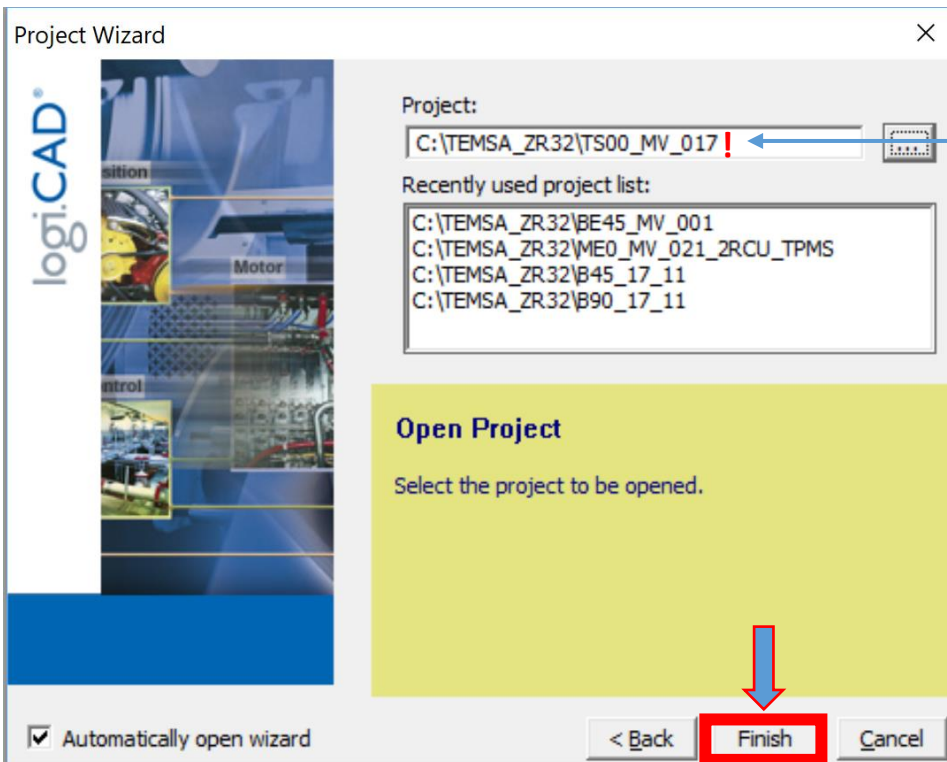


5- Select **TS00_MV_026**. Then click "ok" after that click "Finish".

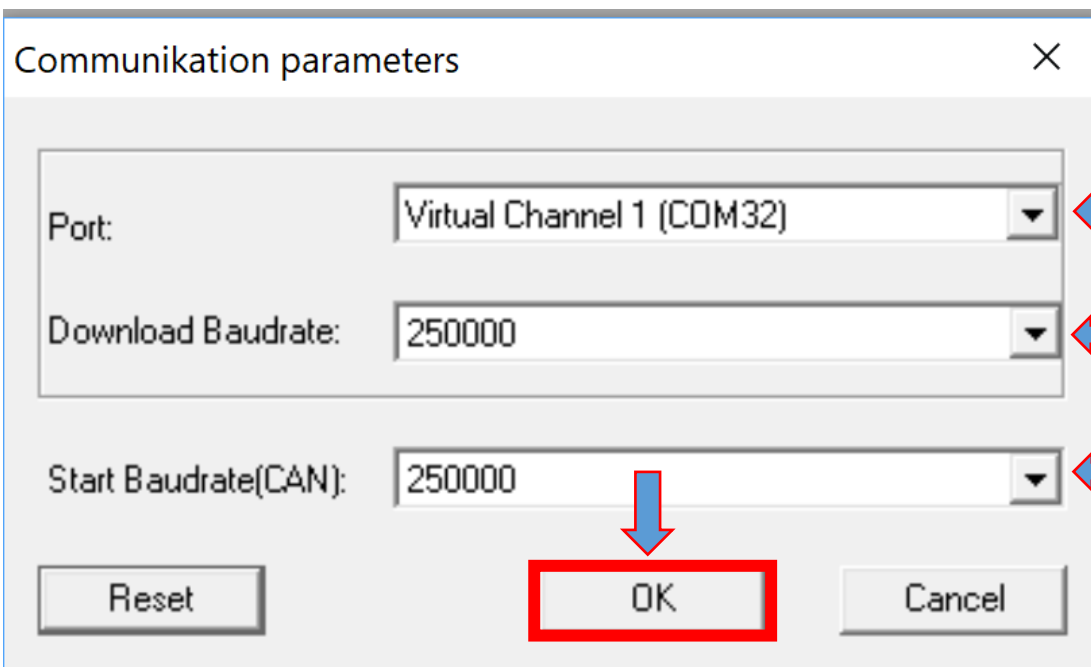
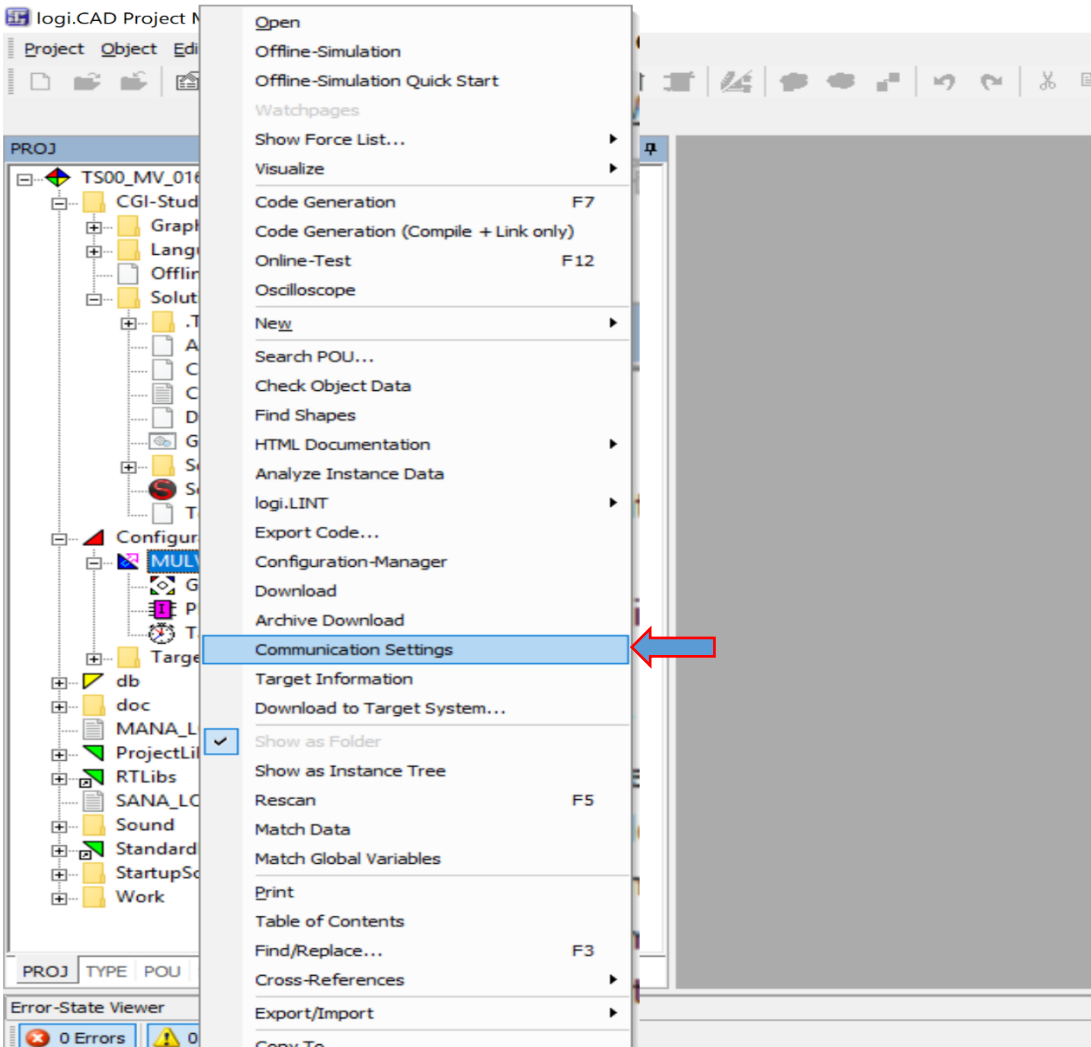
Hint: The software version must be selected correctly. The number shown in the picture may be representative.



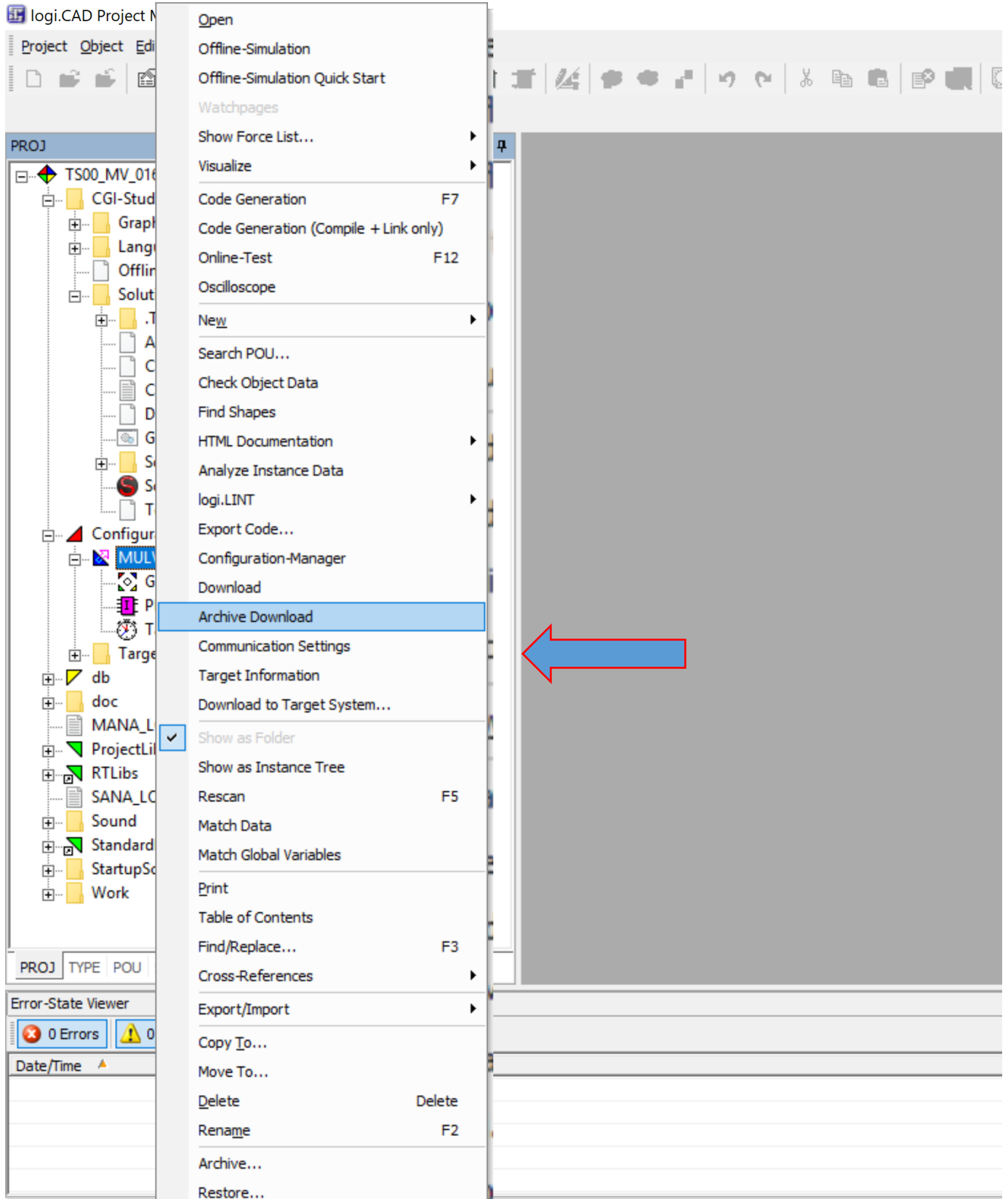
Make sure you choose the right program.

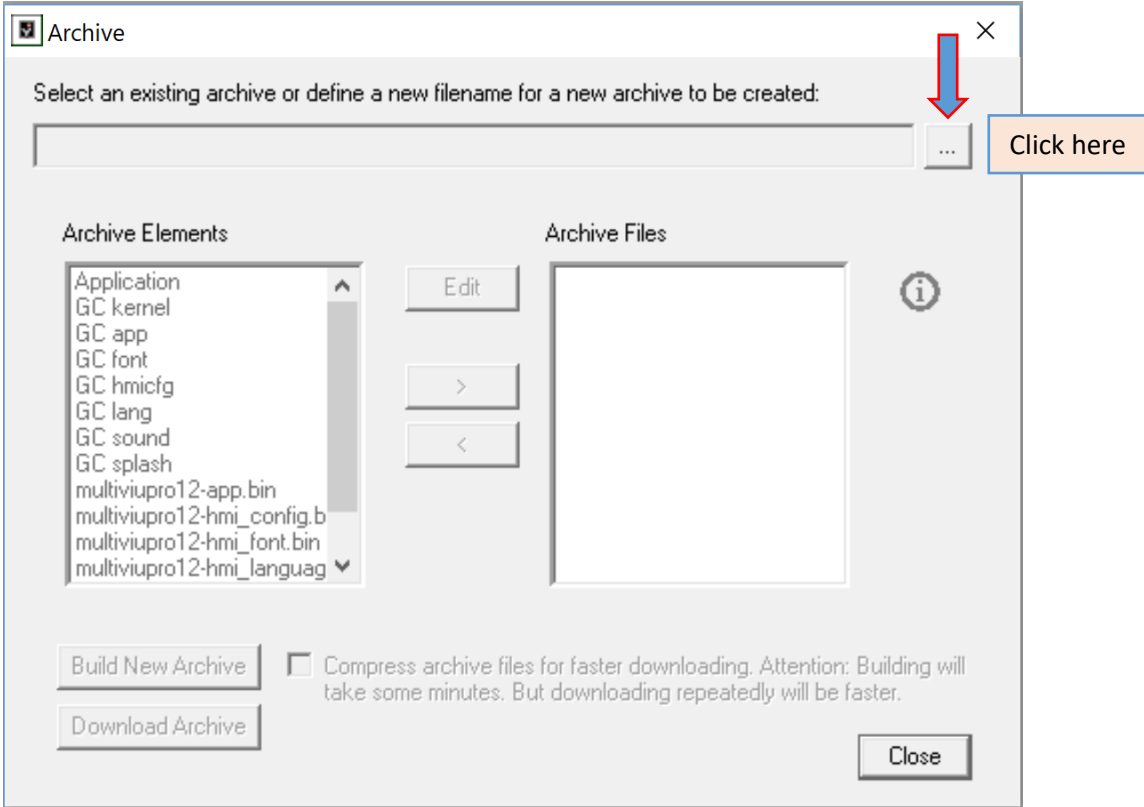


7-Right click on Mulviu then click “Communication Settings” check the Port and Baudrate.

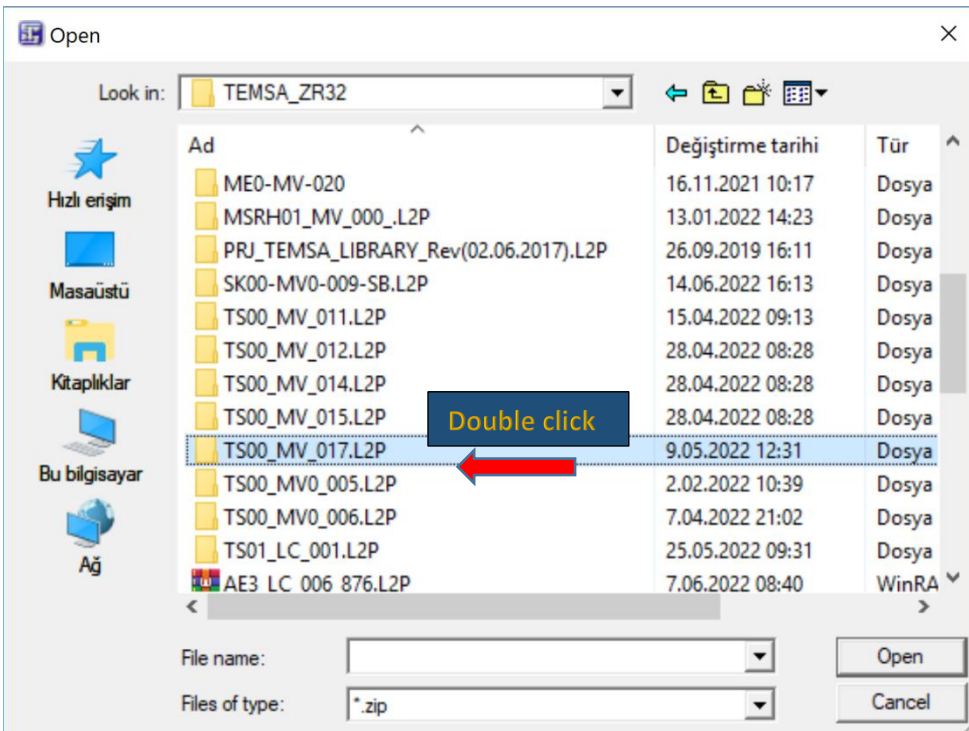


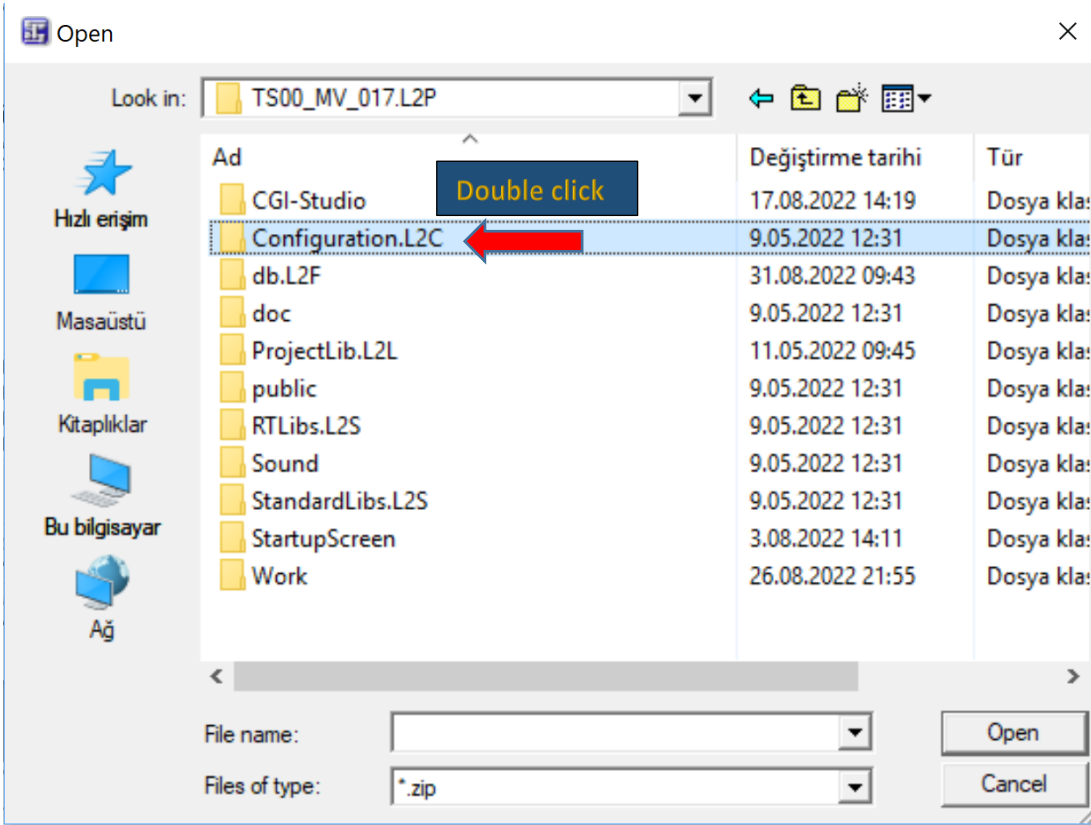
8-Right click on Mulviu again then click “Archive Download”

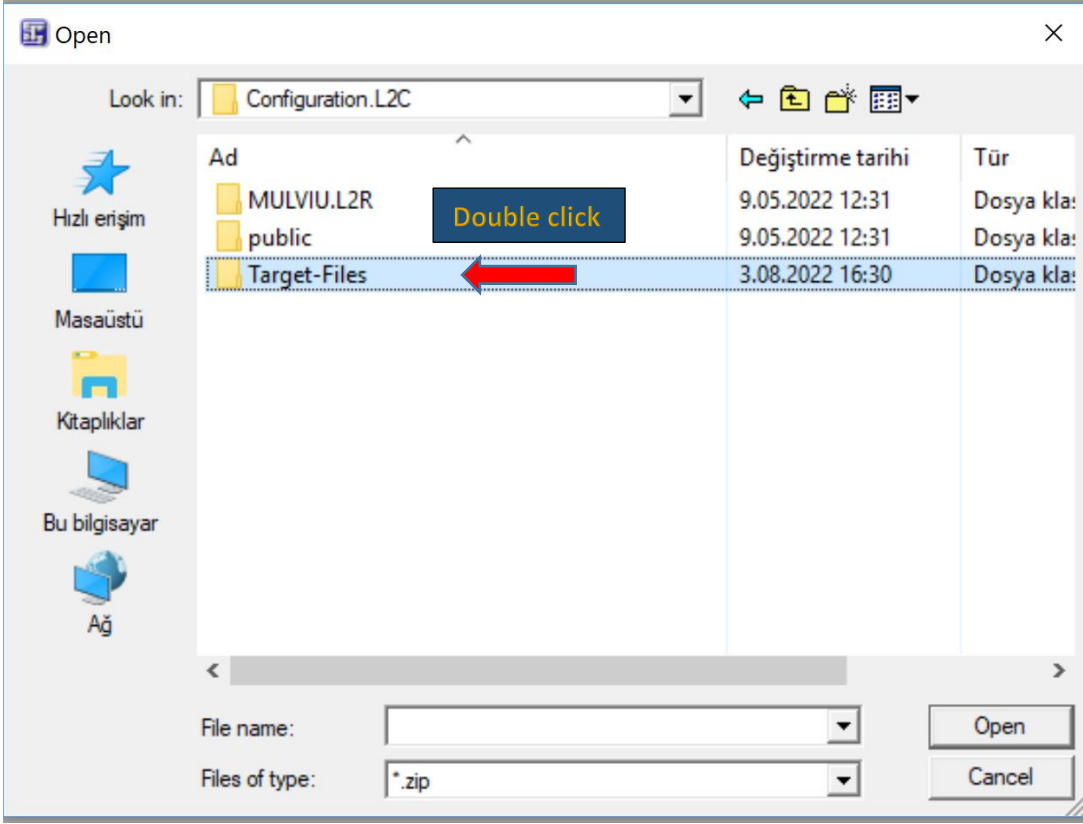




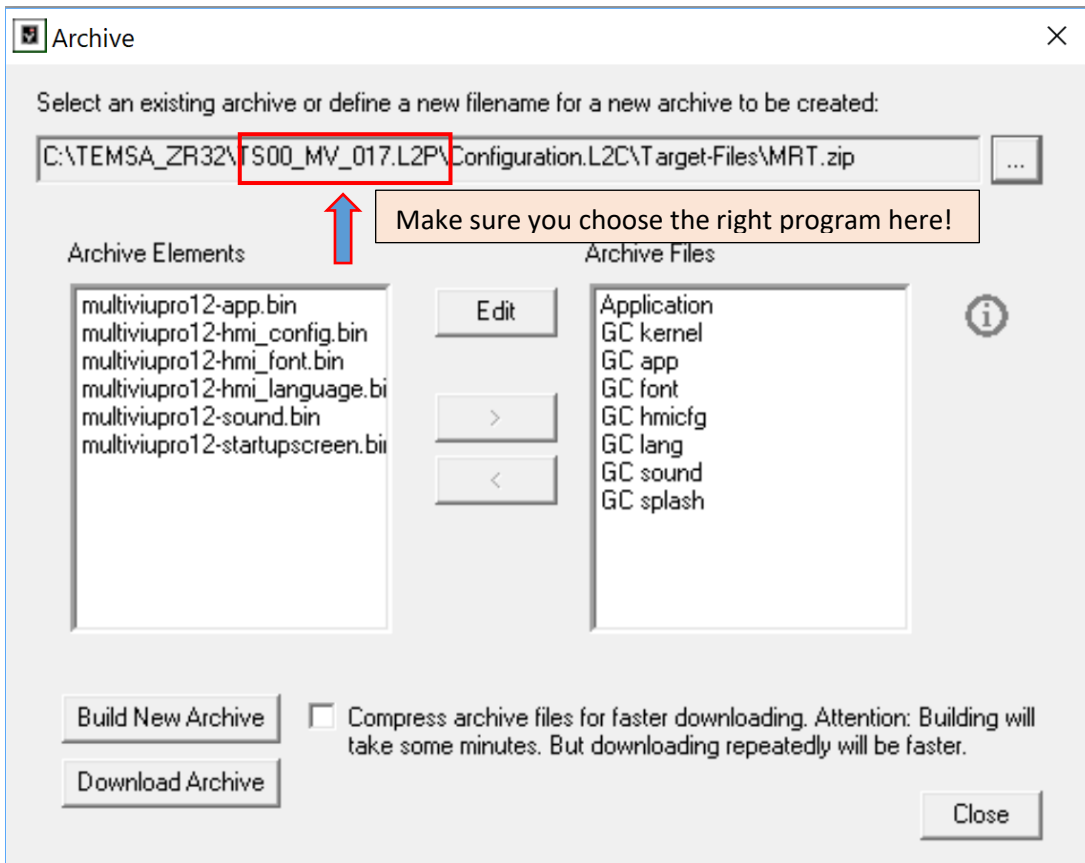
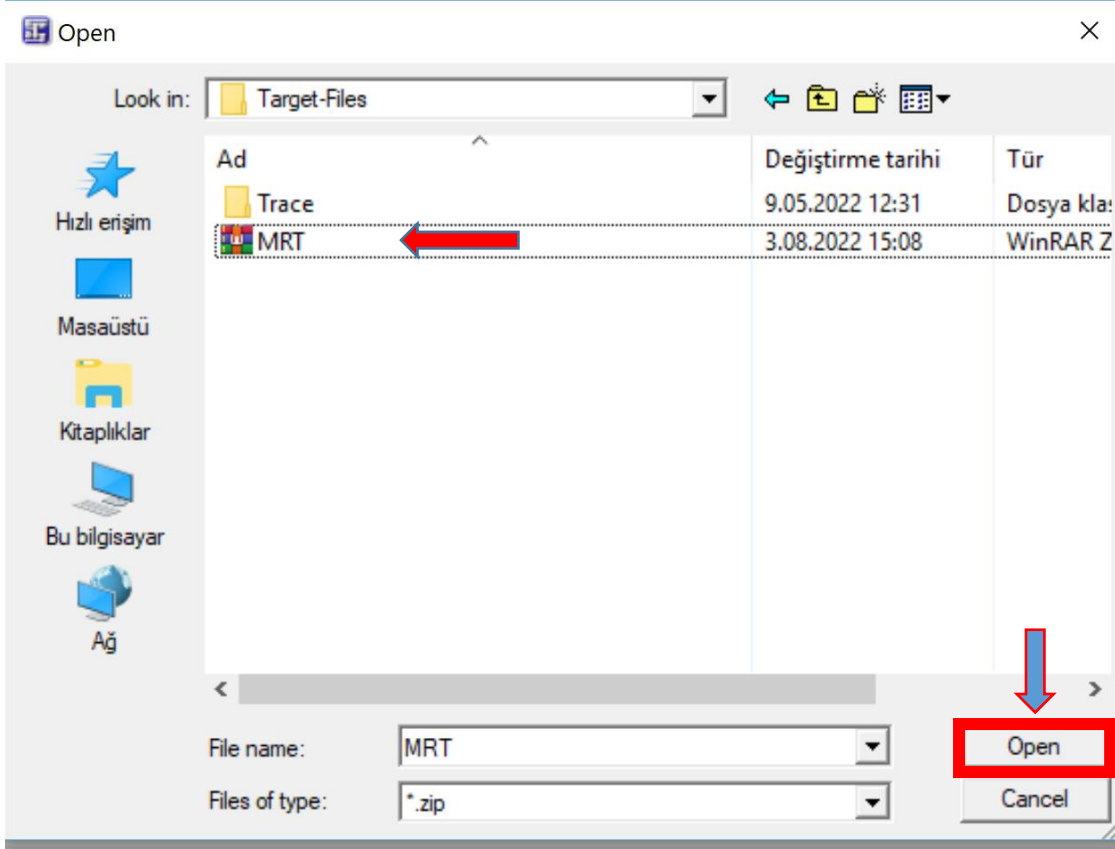
9- You should find program in your workspace then double click the program.







10- Click on “MRT” then click “Open”.



11- After the software is checked, click the “Build New Archive”, then click the “Archive Download” .

12-When a warning occurs, click OK, then wait for the program to be downloaded. Do not cut the power off during the download process, this could cause the body controller to dysfunction.

Vehicle List

#	VIN	Country
1	NLTEJXA94M1000329	US
2	NLTEJXA92M1000328	US
3	NLTEJXA96N1000334	US
4	NLTEJXA99N1000330	US
5	NLTEJXA90N1000331	US
6	NLTEJXA92N1000332	US
7	NLTEJXA90P1000333	US
8	NLTEJXA98N1000335	US
9	NLTEJXA9XN1000336	US
10	NLTEJXA91N1000337	US
11	NLTEJXA9XP1000338	US
12	NLTEJXA95N1000339	US
13	NLTEJXA91N1000340	US
14	NLTEJXA93N1000341	US
15	NLTEJXA95N1000342	US
16	NLTEJXA97N1000343	US
17	NLTEJXA95P1000344	US
18	NLTEJXA90N1000345	US
19	NLTEJXA92N1000346	US
20	NLTEJXA94N1000347	US
21	NLTEJXA92P1000348	US
22	NLTEJXA94P1000349	US
23	NLTEJXA90P1000350	US
24	NLTEJXA92P1000351	US
25	NLTEJXA94P1000352	US
26	NLTEJXA96P1000353	US
27	NLTEJXA93P1000357	US
28	NLTEJXA95P1000358	US
29	NLTEJXA97P1000359	US



TEMSA

SERVICE BULLETIN

30	NLTEJXA9XP1000355	US
31	NLTEJXA98P1000354	US
32	NLTEJXA91P1000356	US
33	NLTEJXA93P1000360	US
34	NLTEJXA95P1000361	US
35	NLTEJXA97P1000362	US
36	NLTEJXA99P1000363	US
37	NLTEJXA90P1000364	US
38	NLTEJXA92P1000365	US
39	NLTEJXA94P1000366	US
40	NLTEJXA96P1000367	US
41	NLTEJXA98P1000368	US
42	NLTEJXA9XP1000369	US
43	NLTEJXA96P1000370	US
44	NLTEJXA98P1000371	US
45	NLTEJXA9XP1000372	US
46	NLTEJXA91P1000373	US
47	NLTEJXA93P1000374	US
48	NLTEJXA95P1000375	US
49	NLTEJXA97P1000376	US
50	NLTEJXA99P1000377	US
51	NLTEJXA90P1000378	US
52	NLTEJXA92P1000379	US
53	NLTEJXA99P1000380	US
54	NLTEJXA90P1000381	US
55	NLTEJXA92P1000382	US
56	NLTEJXA94P1000383	US
57	NLTEJXA96P1000384	US
58	NLTEJXA98P1000385	US
59	NLTEJXA9XP1000386	US
60	NLTEJXA91P1000387	US
61	NLTEJXA93P1000388	US
62	NLTEJXA95P1000389	US
63	NLTEJXA91P1000390	US
64	NLTEJXA93P1000391	US
65	NLTEJXA95P1000392	US
66	NLTEJXA97P1000393	US
67	NLTEJXA91P1000423	US
68	NLTEJXA99P1000394	US
69	NLTEJXA90P1000395	US
70	NLTEJXA92P1000396	US
71	NLTEJXA94P1000397	US
72	NLTEJXA96P1000398	US



TEMSA

SERVICE BULLETIN

73	NLTEJXA98P1000399	US
74	NLTEJXA90P1000400	US
75	NLTEJXA92P1000401	US
76	NLTEJXA94P1000402	US
77	NLTEJXA96P1000403	US
78	NLTEJXA98P1000404	US
79	NLTEJXA94P1000433	US
80	NLTEJXA96P1000434	US
81	NLTEJXA9XP1000405	US
82	NLTEJXA91P1000406	US

LABOR BREAKDOWN

Application	Time
Uploading the up-to-date Kibes and Multiviu program.	60
Total Labor Time	60